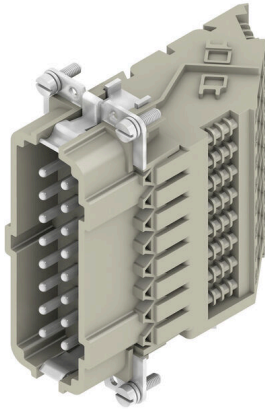


**DSTV HE SR16 S****Weidmüller Interface GmbH & Co. KG**Klingenbergstraße 26  
D-32758 Detmold  
Germany

www.weidmueller.com



A heavy-duty connector consists of a connector insert and its protective housing. The insert is therefore the heart of the heavy-duty connector. It is responsible for electrical functioning. Connector inserts from Weidmüller are made from high-quality insulation materials, which allow secure transmission of high voltages in a tight space. Moreover, we use only a single type of plastic in our entire product line. This plastic is UL listed, and suitable for railway applications. This allows unlimited worldwide use of the RockStar® connector.

**General ordering data**

|            |   |
|------------|---|
| Version    | HDC insert, Pin, 500 V, 16 A, Number of poles: 16, Screw connection, Installation size: 6 |
| Order No.  | <a href="#">1848760000</a>  |
| Type       | DSTV HE SR16 S  |
| GTIN (EAN) | 4032248372010   |
| Qty.       | 10 items  |

## DSTV HE SR16 S

Weidmüller Interface GmbH &amp; Co. KG

Klingenbergstraße 26

D-32758 Detmold

Germany

www.weidmueller.com

## Technical data

## Approvals

Approvals



|                       |                            |
|-----------------------|----------------------------|
| ROHS                  | Conform                    |
| UL File Number Search | <a href="#">UL Website</a> |
| Certificate No. (UR)  | E92202                     |

## Dimensions and weights

|            |          |
|------------|----------|
| Net weight | 162.62 g |
|------------|----------|

## Environmental Product Compliance

|                                      |                                      |
|--------------------------------------|--------------------------------------|
| RoHS Compliance Status               | Compliant with exemption             |
| RoHS Exemption (if applicable/known) | 6c                                   |
| REACH SVHC                           | Lead 7439-92-1                       |
| SCIP                                 | d0694b55-f1aa-4d24-a200-c532c6ffc384 |

## General data

|                                   |   |                                      |        |
|-----------------------------------|---|--------------------------------------|--------|
| Number of poles                   | 16  | Plugging cycles, silver              | ≥ 200  |
| Type of connection                | Screw connection  | Installation size                    | 6      |
| UL 94 flammability rating         | V-0   | Volume resistance                    | ≤3 mΩ  |
| Colour                            | beige   | Insulation resistance                | 1010 Ω |
| Insulating material               | PC glass-fibre reinforced (UL-listed and railway-certified) | Insulating material group            | IIIa   |
| Surface finish                    | Silver passivated   | Max. torque for main contact         | 0.7 Nm |
| Type                              | Pin   | Pollution severity                   | 3      |
| Basic material                    | Copper alloy  | Min. torque for main contact         | 0.5 Nm |
| Series                            | DSTV-HE   | Rated voltage (DIN EN 61984)         | 500 V  |
| Rated voltage according to UL/CSA | 600 V AC/DC   | Rated impulse voltage (DIN EN 61984) | 6 kV   |
| Rated current (DIN EN 61984)      | 16 A  | Free from halogens                   | false  |
| Low smoke acc. DIN EN 45545-2     | Yes   | BG                                   | 6      |

## Connection data PE

|                                       |                  |                                       |                   |
|---------------------------------------|------------------|---------------------------------------|-------------------|
| Connection type PE                    | Screw connection | Blade size, slotted (PE connection)   | SD 0.8 x 4.0      |
| Stripping length PE connection        | 10 mm            | Blade size, crosshead                 | size PZ1          |
| Tightening torque, max. PE connection | 1.6 Nm           | Tightening torque, min. PE connection | 1.2 Nm            |
| Fixing screw                          | M 4              | Rated cross-section                   | 4 mm <sup>2</sup> |
| Wire cross section, AWG (PE), min.    | AWG 20           | Wire cross section, AWG (PE), max.    | AWG 12            |

## Version

|   |                     |   |                   |
|---|---------------------|---|-------------------|
| Blade size, slotted (screw connection)  | SD 0.6 x 3.5        | Wire connection cross section AWG, max.   | AWG 12            |
| Stripping length, rated connection      | 12 mm               | Type of connection  | Screw connection  |
| Installation size                       | 6                   | Volume resistance   | ≤3 mΩ             |
| Clamping screw                          | M 3                 | Blade size  | size PZ0          |
| Wire connection cross section AWG, min. | AWG 20              | Wire cross-section, solid, max.   | 4 mm <sup>2</sup> |
| Wire cross-section, solid, min.         | 0.5 mm <sup>2</sup> | Wire connection cross-section, finely stranded with wire-end ferrules DIN 46228/4, max. | 4 mm <sup>2</sup> |

## DSTV HE SR16 S

**Weidmüller Interface GmbH & Co. KG**  
 Klingenbergstraße 26  
 D-32758 Detmold  
 Germany

[www.weidmueller.com](http://www.weidmueller.com)

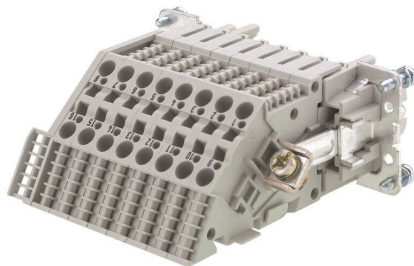
## Technical data

|   |                     |  |                   |
|---|---------------------|--|-------------------|
| Wire connection cross-section, finely stranded with wire-end ferrules DIN 46228/4, min. | 0.5 mm <sup>2</sup> | Wire connection cross section, finely stranded, max. | 4 mm <sup>2</sup> |
| Wire connection cross section, finely stranded, min.                                    | 0.5 mm <sup>2</sup> | Conductor cross-section, max.                        | 4 mm <sup>2</sup> |
| Conductor cross-section, min.   | 0.5 mm <sup>2</sup> | Surface finish                                       | Silver passivated |
| Max. torque for main contact  | 0.7 Nm              | Basic material                                       | Copper alloy      |
| Min. torque for main contact  | 0.5 Nm              | BG   | 6                 |

## Classifications

|             |             |             |             |
|-------------|-------------|-------------|-------------|
| ETIM 8.0    | EC002311    | ETIM 9.0    | EC002311    |
| ETIM 10.0   | EC002311    | ECLASS 14.0 | 27-44-02-03 |
| ECLASS 15.0 | 27-44-02-03 |             |             |

Drawings



## DSTV HE SR16 S

Weidmüller Interface GmbH &amp; Co. KG

Klingenbergstraße 26

D-32758 Detmold

Germany

www.weidmueller.com

## Accessories

## Slotted screwdriver

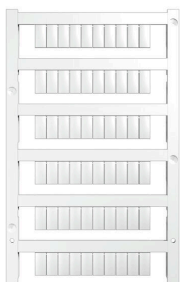


VDE insulated slot-head screwdriver, SDI DIN 7437, ISO 2380/2, drive output acc. to DIN 5264, ISO 2380/1. SoftFinish grip

## General ordering data

|            |                            |                          |
|------------|----------------------------|--------------------------|
| Type       | SDIS 0.6X3.5X100           | Version                  |
| Order No.  | <a href="#">9008390000</a> | Screwdriver, Screwdriver |
| GTIN (EAN) | 4032248056354              |                          |
| Qty.       | 1 ST                       |                          |
| Type       | SDS 0.6X3.5X100            | Version                  |
| Order No.  | <a href="#">9008330000</a> | Screwdriver, Screwdriver |
| GTIN (EAN) | 4032248056286              |                          |
| Qty.       | 1 ST                       |                          |
| Type       | SDIS 0.8X4.0X100           | Version                  |
| Order No.  | <a href="#">9008400000</a> | Screwdriver, Screwdriver |
| GTIN (EAN) | 4032248056361              |                          |
| Qty.       | 1 ST                       |                          |
| Type       | SDS 0.8X4.0X100            | Version                  |
| Order No.  | <a href="#">9008340000</a> | Screwdriver, Screwdriver |
| GTIN (EAN) | 4032248056293              |                          |
| Qty.       | 1 ST                       |                          |

## Blank



MultiFit is the Weidmüller marker system used for other makes of terminals. Similar to the Weidmüller Dekafix, the markers of the MultiFit family are available ready-for-use with standard printing.

We recommend to carry out a test with sample markers on the terminals used when using MultiFit for the first time.

- One marker, suitable for different makes of terminals.
- Ready-to-use markers with standard printing
- Blank markers for printing with the PrintJet CONNECT or Plotter
- Delivery of individually printed markers according to customer CAE data or specifications
- One marking system for all applications

For custom printing: Please send us a file of our labeling software M-Print PRO or M-Print PRO Online (without installation) for your labeling specifications.

## General ordering data

|            |                            |  |
|------------|----------------------------|--|
| Type       | MF 10/6 MC NE WS           | Version  |
| Order No.  | <a href="#">1677220000</a> | MultiFit, Terminal marker, 10 x 6 mm, Pitch in mm (P): 6.00 Phoenix, |
| GTIN (EAN) | 4008190475529              | Wieland, Legrand, Telemecanique, Entelec, white                      |
| Qty.       | 600 ST                     |  |

## DSTV HE SR16 S

**Weidmüller Interface GmbH & Co. KG**  
Klingenbergstraße 26  
D-32758 Detmold  
Germany

[www.weidmueller.com](http://www.weidmueller.com)

## Accessories

|            |                            |  |
|------------|----------------------------|--|
| Type       | MF 12/5 MC NE WS           | Version  |
| Order No.  | <a href="#">1677180000</a> | MultiFit, Terminal marker, 12 x 5 mm, Pitch in mm (P): 5.00 Phoenix, |
| GTIN (EAN) | 4008190470579              | Wieland, Legrand, Telemecanique, Entelec, WAGO, white                |
| Qty.       | 600 ST                     |  |