

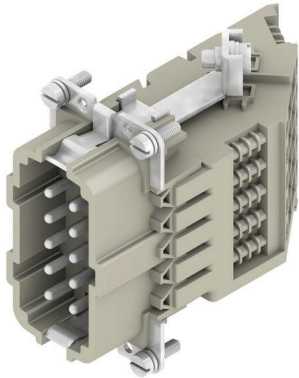
DSTV HE SL10 S**Weidmüller Interface GmbH & Co. KG**

Klingenbergstraße 26

D-32758 Detmold

Germany

www.weidmueller.com



A heavy-duty connector consists of a connector insert and its protective housing. The insert is therefore the heart of the heavy-duty connector. It is responsible for electrical functioning. Connector inserts from Weidmüller are made from high-quality insulation materials, which allow secure transmission of high voltages in a tight space. Moreover, we use only a single type of plastic in our entire product line. This plastic is UL listed, and suitable for railway applications. This allows unlimited worldwide use of the RockStar® connector.

General ordering data

Version	HDC insert, Pin, 500 V, 16 A, Number of poles: 10, Screw connection, Installation size: 4
Order No.	1848680000
Type	DSTV HE SL10 S
GTIN (EAN)	4032248371969
Qty.	10 items

DSTV HE SL10 S

Weidmüller Interface GmbH & Co. KG

Klingenbergstraße 26

D-32758 Detmold

Germany

www.weidmueller.com

Technical data

Approvals

Approvals



ROHS	Conform
UL File Number Search	UL Website
Certificate No. (UR)	E92202

Dimensions and weights

Net weight	127.7 g
------------	---------

Environmental Product Compliance

RoHS Compliance Status	Compliant with exemption
RoHS Exemption (if applicable/known)	6c
REACH SVHC	Lead 7439-92-1
SCIP	d0694b55-f1aa-4d24-a200-c532c6ffc384

General data

Number of poles	10	Tightening torque	0.5 Nm
Plugging cycles, silver	≥ 200	Type of connection	Screw connection
Installation size	4	UL 94 flammability rating	V-0
Volume resistance	≤3 mΩ	Colour	beige
Insulation resistance	1010 Ω	Insulating material	PC glass-fibre reinforced (UL-listed and railway-certified)
Insulating material group	IIIa	Tightening torque, max. PE connection	1.6 Nm
Surface finish	Silver passivated	Max. torque for main contact	0.7 Nm
Type	Pin	Pollution severity	3
Tightening torque, min. PE connection	1.2 Nm	Basic material	Copper alloy
Min. torque for main contact	0.5 Nm	Series	DSTV-HE
Rated voltage (DIN EN 61984)	500 V	Rated voltage according to UL/CSA	600 V AC/DC
Rated impulse voltage (DIN EN 61984)	6 kV	Rated current (DIN EN 61984)	16 A
Free from halogens	false	Low smoke acc. DIN EN 45545-2	Yes
BG	4		

Connection data PE

Connection type PE	Screw connection	Blade size, slotted (PE connection)	SD 0.8 x 4.0
Stripping length PE connection	10 mm	Blade size, crosshead	size PZ1
Tightening torque, max. PE connection	1.6 Nm	Tightening torque, min. PE connection	1.2 Nm
Fixing screw	M 4	Rated cross-section	4 mm ²
Wire cross section, AWG (PE), min.	AWG 20	Wire cross section, AWG (PE), max.	AWG 12

Version

Blade size, slotted (screw connection)	SD 0.6 x 3.5	Wire connection cross section AWG, max.	AWG 12
Stripping length, rated connection	12 mm	Type of connection	Screw connection
Installation size	4	Volume resistance	≤3 mΩ
Clamping screw	M 3	Blade size	size PZ0

DSTV HE SL10 S

Weidmüller Interface GmbH & Co. KG

Klingenbergstraße 26
D-32758 Detmold
Germany

www.weidmueller.com

Technical data

Wire connection cross section AWG, min.	AWG 20	Wire cross-section, solid, max.	4 mm ²
Wire cross-section, solid, min.	0.5 mm ²	Wire connection cross-section, finely stranded with wire-end ferrules DIN 46228/4, max.	4 mm ²
Wire connection cross-section, finely stranded with wire-end ferrules DIN 46228/4, min.	0.5 mm ²	Wire connection cross section, finely stranded, max.	4 mm ²
Wire connection cross section, finely stranded, min.	0.5 mm ²	Conductor cross-section, max.	4 mm ²
Conductor cross-section, min.	0.5 mm ²	Surface finish	Silver passivated
Max. torque for main contact	0.7 Nm	Basic material	Copper alloy
Min. torque for main contact	0.5 Nm	BG	4

Classifications

ETIM 8.0	EC002311	ETIM 9.0	EC002311
ETIM 10.0	EC002311	ECLASS 14.0	27-44-02-03
ECLASS 15.0	27-44-02-03		

Drawings



DSTV HE SL10 S

Weidmüller Interface GmbH & Co. KG

Klingenbergstraße 26

D-32758 Detmold

Germany

www.weidmueller.com

Accessories

Slotted screwdriver



VDE insulated slot-head screwdriver, SDI DIN 7437, ISO 2380/2, drive output acc. to DIN 5264, ISO 2380/1. SoftFinish grip

General ordering data

Type	SDIS 0.6X3.5X100	Version
Order No.	9008390000	Screwdriver, Screwdriver
GTIN (EAN)	4032248056354	
Qty.	1 ST	
Type	SDS 0.6X3.5X100	Version
Order No.	9008330000	Screwdriver, Screwdriver
GTIN (EAN)	4032248056286	
Qty.	1 ST	
Type	SDIS 0.8X4.0X100	Version
Order No.	9008400000	Screwdriver, Screwdriver
GTIN (EAN)	4032248056361	
Qty.	1 ST	
Type	SDS 0.8X4.0X100	Version
Order No.	9008340000	Screwdriver, Screwdriver
GTIN (EAN)	4032248056293	
Qty.	1 ST	

Blank



MultiFit is the Weidmüller marker system used for other makes of terminals. Similar to the Weidmüller Dekafix, the markers of the MultiFit family are available ready-for-use with standard printing.

We recommend to carry out a test with sample markers on the terminals used when using MultiFit for the first time.

- One marker, suitable for different makes of terminals.
- Ready-to-use markers with standard printing
- Blank markers for printing with the PrintJet CONNECT or Plotter
- Delivery of individually printed markers according to customer CAE data or specifications
- One marking system for all applications

For custom printing: Please send us a file of our labeling software M-Print PRO or M-Print PRO Online (without installation) for your labeling specifications.

General ordering data

Type	MF 10/6 MC NE WS	Version
Order No.	1677220000	MultiFit, Terminal marker, 10 x 6 mm, Pitch in mm (P): 6.00 Phoenix,
GTIN (EAN)	4008190475529	Wieland, Legrand, Telemecanique, Entelec, white
Qty.	600 ST	

DSTV HE SL10 S

Weidmüller Interface GmbH & Co. KG
Klingenbergstraße 26
D-32758 Detmold
Germany

www.weidmueller.com

Accessories

Type	MF 12/5 MC NE WS	Version
Order No.	1677180000	MultiFit, Terminal marker, 12 x 5 mm, Pitch in mm (P): 5.00 Phoenix,
GTIN (EAN)	4008190470579	Wieland, Legrand, Telemecanique, Entelec, WAGO, white
Qty.	600 ST	