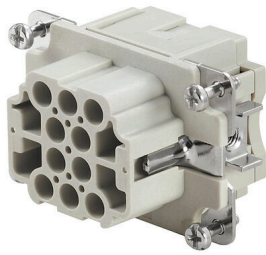


**HDC HEE 10 FC****Weidmüller Interface GmbH & Co. KG**Klingenbergstraße 26  
D-32758 Detmold  
Germany

www.weidmueller.com



The HEE series features high-density contacts and is designed based on the established HE inserts. The wire connection level is designed as a crimp contact. The established crimp connection has been used as a standard for decades. Crimp contacts are not delivered with the inserts.

Number of poles: 10

Rated current: 16 A

Rated voltage: 500 V

Nominal voltage acc. to UL/CSA: 600 V AC/DC

**General ordering data**

Version	HDC insert, Female, 500 V, 16 A, Number of poles: 10, Crimp connection, Installation size: 3
Order No.	<a href="#">1826840000</a>
Type	HDC HEE 10 FC
GTIN (EAN)	4032248330249
Qty.	1 items

**Technical data**

**Approvals**

Approvals



ROHS	Conform
UL File Number Search	<a href="#">UL Website</a>
Certificate No. (cURus)	E92202

**Dimensions and weights**

Depth	51 mm	Depth (inches)	2.0079 inch
Height	36 mm	Height (inches)	1.4173 inch
Width	34 mm	Width (inches)	1.3386 inch
Net weight	36.08 g		

**Temperatures**

Limit temperature	-40 °C ... 125 °C
-------------------	-------------------

**Environmental Product Compliance**

RoHS Compliance Status	Compliant without exemption
REACH SVHC	Potassium perfluorobutane sulfonate 29420-49-3
SCIP	1609748e-c278-4c9b-b3d1-e6215d2988cd

Chemical resistance	Substance	Acetone
	Chemical resistance	Resistant
	Substance	Ammonia, watery
	Chemical resistance	Conditionally resistant
	Substance	Petrol
	Chemical resistance	Resistant
	Substance	Benzene
	Chemical resistance	Resistant
	Substance	Diesel oil
	Chemical resistance	Conditionally resistant
	Substance	Acetic acid, concentrated
	Chemical resistance	Resistant
	Substance	Potassium hydroxide
	Chemical resistance	Conditionally resistant
	Substance	Methanol
	Chemical resistance	Conditionally resistant
	Substance	Motor oil
	Chemical resistance	Conditionally resistant
	Substance	Lye, diluted
	Chemical resistance	Resistant
Substance	Hydrochlorofluorocarbons	
Chemical resistance	Conditionally resistant	
Substance	Outdoor use	
Chemical resistance	Conditionally resistant	

**Dimensions**

Width	34 mm	Total length base	51 mm
Height of socket	36 mm		

## HDC HEE 10 FC

**Weidmüller Interface GmbH & Co. KG**

Klingenbergstraße 26  
D-32758 Detmold  
Germany

www.weidmueller.com

## Technical data

### General data

Number of poles	10	Tightening torque	0.5 Nm
Plugging cycles, silver	≥ 500	Plugging cycles, gold	≥ 500
Type of connection	Crimp connection	Installation size	3
UL 94 flammability rating	V-0	Volume resistance	≤2 mΩ
Colour	beige	Insulation resistance	1010 Ω
Insulating material	PC glass-fibre reinforced (UL-listed and railway-certified)	Insulating material group	IIIa
Conductor cross-section	4 mm <sup>2</sup>	Tightening torque, max. PE connection	1.5 Nm
Type	Female	Pollution severity	3
Tightening torque, min. PE connection	1.2 Nm	Basic material	Copper alloy
Series	HEE	Rated voltage (DIN EN 61984)	500 V
Rated voltage according to UL/CSA	600 V AC/DC	Rated impulse voltage (DIN EN 61984)	6 kV
Rated current (DIN EN 61984)	16 A	Free from halogens	true
Low smoke acc. DIN EN 45545-2	Yes	BG	3

### Connection data PE

Connection type PE	Screw connection	Blade size, slotted (PE connection)	SD 0.8 x 4.0
Stripping length PE connection	10 mm	Blade size, crosshead	size PH1
Tightening torque, max. PE connection	1.5 Nm	Tightening torque, min. PE connection	1.2 Nm
Fixing screw	M 4	Rated cross-section	4 mm <sup>2</sup>
Wire cross section, AWG (PE), min.	AWG 20	Wire cross section, AWG (PE), max.	AWG 12

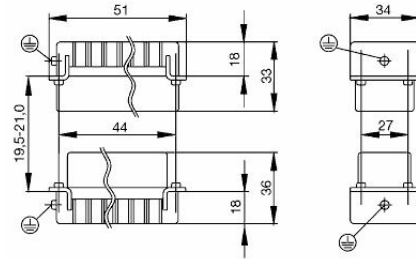
### Version

Wire connection cross section AWG, max.	AWG 12	Stripping length, rated connection	7.5 mm
Type of connection	Crimp connection	Installation size	3
Volume resistance	≤2 mΩ	Wire connection cross section AWG, min.	AWG 20
Wire cross-section, solid, max.	4 mm <sup>2</sup>	Wire cross-section, solid, min.	0.5 mm <sup>2</sup>
Wire connection cross-section, finely stranded with wire-end ferrules DIN 46228/4, max.	4 mm <sup>2</sup>	Wire connection cross-section, finely stranded with wire-end ferrules DIN 46228/4, min.	0.5 mm <sup>2</sup>
Wire connection cross section, finely stranded, max.	4 mm <sup>2</sup>	Wire connection cross section, finely stranded, min.	0.5 mm <sup>2</sup>
Conductor cross-section, max.	4 mm <sup>2</sup>	Conductor cross-section, min.	0.5 mm <sup>2</sup>
Basic material	Copper alloy	BG	3

### Classifications

ETIM 8.0	EC000438	ETIM 9.0	EC000438
ETIM 10.0	EC000438	ECLASS 14.0	27-44-02-05
ECLASS 15.0	27-44-02-05		

Drawings



## Accessories

## Slotted screwdriver



VDE insulated slot-head screwdriver, SDI DIN 7437, ISO 2380/2, drive output acc. to DIN 5264, ISO 2380/1. SoftFinish grip

## General ordering data

Type	SDIS 0.6X3.5X100	Version
Order No.	<a href="#">9008390000</a>	Screwdriver, Screwdriver
GTIN (EAN)	4032248056354	
Qty.	1 ST	
Type	SDS 0.6X3.5X100	Version
Order No.	<a href="#">9008330000</a>	Screwdriver, Screwdriver
GTIN (EAN)	4032248056286	
Qty.	1 ST	
Type	SDIS 0.8X4.0X100	Version
Order No.	<a href="#">9008400000</a>	Screwdriver, Screwdriver
GTIN (EAN)	4032248056361	
Qty.	1 ST	
Type	SDS 0.8X4.0X100	Version
Order No.	<a href="#">9008340000</a>	Screwdriver, Screwdriver
GTIN (EAN)	4032248056293	
Qty.	1 ST	

## Crosshead screwdriver Phillips



VDE insulated crosshead screwdriver, for Phillips screws, SDIK PH DIN 7438, ISO 8764/2-PH, output to ISO 8764-PH, SoftFinish grip

## General ordering data

Type	SDIK PH1	Version
Order No.	<a href="#">9008570000</a>	Screwdriver, Screwdriver
GTIN (EAN)	4032248056569	
Qty.	1 ST	
Type	SDK PH1	Version
Order No.	<a href="#">9008480000</a>	Screwdriver, Screwdriver
GTIN (EAN)	4032248056477	
Qty.	1 ST	

## HDC HEE 10 FC

**Weidmüller Interface GmbH & Co. KG**  
 Klingenbergstraße 26  
 D-32758 Detmold  
 Germany

www.weidmueller.com

## Accessories

### Crimping tools



Crimping tools for turned contacts

- Ratchet guarantees precise crimping
- Release option in the event of incorrect operation
- With stop for exact positioning of the contacts.

### General ordering data

Type	CTX CM 1.6/2.5	Version
Order No.	<a href="#">9018490000</a>	Pressing tool, Crimping tool for contacts, 0.14mm <sup>2</sup> , 4mm <sup>2</sup> , W crimp
GTIN (EAN)	4008190884598	
Qty.	1 ST	

Type	CTIN CM 1.6/2.5	Version
Order No.	<a href="#">9205430000</a>	Pressing tool, Crimping tool for contacts, 0.14mm <sup>2</sup> , 6mm <sup>2</sup> , 4-indent crimp
GTIN (EAN)	4032248733446	
Qty.	1 ST	

### Contact removal tools



Weidmüller offers a variety of crimping tools, contact removal tools, and fibre optic tools.

### General ordering data

Type	REMOVAL TOOL HE	Version
Order No.	<a href="#">1866750000</a>	Tools, Contact Removal Tool
GTIN (EAN)	4032248437078	
Qty.	1 ST	

### HE

Various accessories are available for our inserts. This includes coding elements for the inserts.



## HDC HEE 10 FC

**Weidmüller Interface GmbH & Co. KG**  
 Klingenbergstraße 26  
 D-32758 Detmold  
 Germany

www.weidmueller.com

## Accessories

## General ordering data

Type	HDC HE CP	Version	
Order No.	<a href="#">1003240000</a>	Heavy-duty connectors, Accessories, Coding System	
GTIN (EAN)	4032248698233		
Qty.	100 ST		

## Crimp contacts HE



Crimps provide a electrical and mechanical connection between wire and contact that is both secure and reliable. The optimal crimp connection is gas-tight and corrosion-resistant.

## General ordering data

Type	HDC-C-HE-BM0.5AG	Version	
Order No.	<a href="#">1201100000</a>	Heavy-duty connectors, Crimp contact, HE, HEE, HQ, MixMate, Female, Conductor cross-section, max.: 0.5, turned, Copper alloy	
GTIN (EAN)	4008190142698		
Qty.	100 ST		
Type	HDC-C-HE-BM0.75-1.00AG	Version	
Order No.	<a href="#">1201200000</a>	Heavy-duty connectors, Crimp contact, HE, HEE, HQ, MixMate, Female, Conductor cross-section, max.: 1, turned, Copper alloy	
GTIN (EAN)	4008190044480		
Qty.	100 ST		
Type	HDC-C-HE-BM1.5AG	Version	
Order No.	<a href="#">1201300000</a>	Heavy-duty connectors, Crimp contact, HE, HEE, HQ, MixMate, Female, Conductor cross-section, max.: 1.5, turned, Copper alloy	
GTIN (EAN)	4008190100346		
Qty.	100 ST		
Type	HDC-C-HE-BM2.5AG	Version	
Order No.	<a href="#">1201400000</a>	Heavy-duty connectors, Crimp contact, HE, HEE, HQ, MixMate, Female, Conductor cross-section, max.: 2.5, turned, Copper alloy	
GTIN (EAN)	4008190047078		
Qty.	100 ST		
Type	HDC-C-HE-BM4.0AG	Version	
Order No.	<a href="#">1201500000</a>	Heavy-duty connectors, Crimp contact, HE, HEE, HQ, MixMate, Female, Conductor cross-section, max.: 4, turned, Copper alloy	
GTIN (EAN)	4008190148096		
Qty.	100 ST		
Type	HDC-C-HE-BM0.5AU	Version	
Order No.	<a href="#">1651470000</a>	Heavy-duty connectors, Crimp contact, HE, HEE, HQ, MixMate, Female, Conductor cross-section, max.: 0.5, turned, Copper alloy	
GTIN (EAN)	4008190400149		
Qty.	100 ST		
Type	HDC-C-HE-BM0.75-1.00AU	Version	
Order No.	<a href="#">1651480000</a>	Heavy-duty connectors, Crimp contact, HE, HEE, HQ, MixMate, Female, Conductor cross-section, max.: 1, turned, Copper alloy	
GTIN (EAN)	4008190400156		
Qty.	100 ST		
Type	HDC-C-HE-BM1.5AU	Version	
Order No.	<a href="#">1651490000</a>	Heavy-duty connectors, Crimp contact, HE, HEE, HQ, MixMate, Female, Conductor cross-section, max.: 1.5, turned, Copper alloy	
GTIN (EAN)	4008190400163		
Qty.	100 ST		

## HDC HEE 10 FC

**Weidmüller Interface GmbH & Co. KG**  
 Klingenbergstraße 26  
 D-32758 Detmold  
 Germany

[www.weidmueller.com](http://www.weidmueller.com)

## Accessories

Type	HDC-C-HE-BM2.5AU	Version
Order No.	<a href="#">1651500000</a>	Heavy-duty connectors, Crimp contact, HE, HEE, HQ, MixMate,
GTIN (EAN)	4008190400170	Female, Conductor cross-section, max.: 2.5, turned, Copper alloy
Qty.	100 ST	
Type	HDC-C-HE-BM4.0AU	Version
Order No.	<a href="#">1651510000</a>	Heavy-duty connectors, Crimp contact, HE, HEE, HQ, MixMate,
GTIN (EAN)	4008190400187	Female, Conductor cross-section, max.: 4, turned, Copper alloy
Qty.	100 ST	

## DSTV

Various accessories are available for our inserts. This includes coding elements for the inserts.



## General ordering data

Type	DSTV COBU5	Version
Order No.	<a href="#">1471500000</a>	Heavy-duty connectors, Accessories, Coding element
GTIN (EAN)	4008190178543	
Qty.	100 ST	
Type	DSTV COST4	Version
Order No.	<a href="#">1471300000</a>	Heavy-duty connectors, Accessories, Coding System
GTIN (EAN)	4008190017354	
Qty.	100 ST	