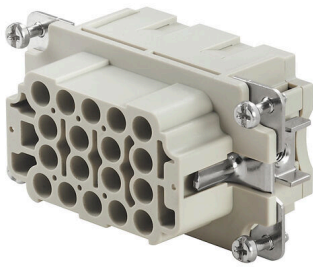


**HDC HEE 18 FC****Weidmüller Interface GmbH & Co. KG**Klingenbergstraße 26  
D-32758 Detmold  
Germany

www.weidmueller.com



The HEE series features high-density contacts and is designed based on the established HE inserts. The wire connection level is designed as a crimp contact. The established crimp connection has been used as a standard for decades. Crimp contacts are not delivered with the inserts.

Number of poles: 18

Rated current: 16 A

Rated voltage: 500 V

Nominal voltage acc. to UL/CSA: 600 V AC/DC

**General ordering data**

|            |  |
|------------|--|
| Version    | HDC insert, Female, 500 V, 16 A, Number of poles: 18, Crimp connection, Installation size: 4 |
| Order No.  | <a href="#">1826820000</a>   |
| Type       | HDC HEE 18 FC  |
| GTIN (EAN) | 4032248330225  |
| Qty.       | 1 items  |

**Technical data**

**Approvals**

Approvals



|                         |                            |
|-------------------------|----------------------------|
| ROHS                    | Conform                    |
| UL File Number Search   | <a href="#">UL Website</a> |
| Certificate No. (cURus) | E92202                     |

**Dimensions and weights**

|            |       |                 |             |
|------------|-------|-----------------|-------------|
| Depth      | 64 mm | Depth (inches)  | 2.5197 inch |
| Height     | 36 mm | Height (inches) | 1.4173 inch |
| Width      | 34 mm | Width (inches)  | 1.3386 inch |
| Net weight | 44 g  |                 |             |

**Temperatures**

|                   |                   |
|-------------------|-------------------|
| Limit temperature | -40 °C ... 125 °C |
|-------------------|-------------------|

**Environmental Product Compliance**

|                        |  |
|------------------------|--|
| RoHS Compliance Status | Compliant without exemption                    |
| REACH SVHC             | Potassium perfluorobutane sulfonate 29420-49-3 |
| SCIP                   | 1609748e-c278-4c9b-b3d1-e6215d2988cd           |

|                     |                          |                           |
|---------------------|--------------------------|---------------------------|
| Chemical resistance | Substance                | Acetone                   |
|                     | Chemical resistance      | Resistant                 |
|                     | Substance                | Ammonia, watery           |
|                     | Chemical resistance      | Conditionally resistant   |
|                     | Substance                | Petrol                    |
|                     | Chemical resistance      | Resistant                 |
|                     | Substance                | Benzene                   |
|                     | Chemical resistance      | Resistant                 |
|                     | Substance                | Diesel oil                |
|                     | Chemical resistance      | Conditionally resistant   |
|                     | Substance                | Acetic acid, concentrated |
|                     | Chemical resistance      | Resistant                 |
|                     | Substance                | Potassium hydroxide       |
|                     | Chemical resistance      | Conditionally resistant   |
|                     | Substance                | Methanol                  |
|                     | Chemical resistance      | Conditionally resistant   |
|                     | Substance                | Motor oil                 |
|                     | Chemical resistance      | Conditionally resistant   |
|                     | Substance                | Lye, diluted              |
|                     | Chemical resistance      | Resistant                 |
| Substance           | Hydrochlorofluorocarbons |                           |
| Chemical resistance | Conditionally resistant  |                           |
| Substance           | Outdoor use              |                           |
| Chemical resistance | Conditionally resistant  |                           |

**Dimensions**

|                  |       |                   |       |
|------------------|-------|-------------------|-------|
| Width            | 34 mm | Total length base | 64 mm |
| Height of socket | 36 mm |                   |       |

## HDC HEE 18 FC

**Weidmüller Interface GmbH & Co. KG**  
 Klingenbergstraße 26  
 D-32758 Detmold  
 Germany

www.weidmueller.com

## Technical data

### General data

|                                       |   |                                   |        |
|---------------------------------------|---|-----------------------------------|--------|
| Number of poles                       | 18  |                                   |        |
| Plugging cycles, silver               | ≥ 500   |                                   |        |
| Plugging cycles, gold                 | ≥ 500   |                                   |        |
| Type of connection                    | Crimp connection  |                                   |        |
| Installation size                     | 4   |                                   |        |
| UL 94 flammability rating             | V-0   |                                   |        |
| Volume resistance                     | ≤2 mΩ   |                                   |        |
| Colour                                | beige   |                                   |        |
| Insulation resistance                 | 1010 Ω  |                                   |        |
| Insulating material                   | PC glass-fibre reinforced (UL-listed and railway-certified) |                                   |        |
| Insulating material group             | IIIa  |                                   |        |
| Conductor cross-section               | 4 mm <sup>2</sup>   |                                   |        |
| Tightening torque, max. PE connection | 1.5 Nm  |                                   |        |
| Type                                  | Female  |                                   |        |
| Pollution severity                    | 3   |                                   |        |
| Tightening torque, min. PE connection | 1.2 Nm  |                                   |        |
| Basic material                        | Copper alloy  |                                   |        |
| Series                                | HEE   |                                   |        |
| Rated voltage (DIN EN 61984)          | 500 V   |                                   |        |
| Rated voltage according to UL/CSA     | 600 V AC/DC   |                                   |        |
| Rated impulse voltage (DIN EN 61984)  | 6 kV  |                                   |        |
| Rated current (DIN EN 61984)          | 16 A  |                                   |        |
| Rated current (UR)                    | Wire connection cross section AWG                           | AWG 12                            |        |
|                                       | Rated current   | 21.6 A                            |        |
|                                       | Wire connection cross section AWG                           | AWG 14                            |        |
|                                       | Rated current   | 16 A                              |        |
|                                       | Wire connection cross section AWG                           | AWG 16                            |        |
|                                       | Rated current   | 11.9 A                            |        |
|                                       | Wire connection cross section AWG                           | AWG 18                            |        |
|                                       | Rated current   | 11 A                              |        |
|                                       | Wire connection cross section AWG                           | AWG 20                            |        |
|                                       | Rated current   | 8.1 A                             |        |
|                                       | Rated current (cUR)   | Wire connection cross section AWG | AWG 12 |
|                                       |   | Rated current                     | 11.3 A |
|                                       |   | Wire connection cross section AWG | AWG 14 |
|                                       |   | Rated current                     | 8.5 A  |
| Wire connection cross section AWG     |   | AWG 16                            |        |
| Rated current                         |   | 6.3 A                             |        |
| Wire connection cross section AWG     |   | AWG 18                            |        |
| Rated current                         |   | 5.9 A                             |        |
| Wire connection cross section AWG     |   | AWG 20                            |        |
| Rated current                         |   | 4.3 A                             |        |
| Free from halogens                    | true  |                                   |        |
| Low smoke acc. DIN EN 45545-2         | Yes   |                                   |        |
| BG                                    | 4   |                                   |        |
| Number of signal contacts             | 0   |                                   |        |
| Number of power contacts              | 18  |                                   |        |

### Connection data PE

|                                       |                  |                                       |                   |
|---------------------------------------|------------------|---------------------------------------|-------------------|
| Connection type PE                    | Screw connection | Blade size, slotted (PE connection)   | SD 0.8 x 4.0      |
| Stripping length PE connection        | 10 mm            | Blade size, crosshead                 | size PH1          |
| Tightening torque, max. PE connection | 1.5 Nm           | Tightening torque, min. PE connection | 1.2 Nm            |
| Fixing screw                          | M 4              | Rated cross-section                   | 4 mm <sup>2</sup> |
| Wire cross section, AWG (PE), min.    | AWG 20           | Wire cross section, AWG (PE), max.    | AWG 12            |

## HDC HEE 18 FC

**Weidmüller Interface GmbH & Co. KG**  
 Klingenbergstraße 26  
 D-32758 Detmold  
 Germany

[www.weidmueller.com](http://www.weidmueller.com)

## Technical data

### Version

|   |                   |   |                     |
|---|-------------------|---|---------------------|
| Wire connection cross section AWG, max.   | AWG 12            | Stripping length, rated connection  | 7.5 mm              |
| Type of connection  | Crimp connection  | Installation size   | 4                   |
| Volume resistance   | ≤2 mΩ             | Wire connection cross section AWG, min.   | AWG 20              |
| Wire cross-section, solid, max.   | 4 mm <sup>2</sup> | Wire cross-section, solid, min.   | 0.5 mm <sup>2</sup> |
| Wire connection cross-section, finely stranded with wire-end ferrules DIN 46228/4, max. | 4 mm <sup>2</sup> | Wire connection cross-section, finely stranded with wire-end ferrules DIN 46228/4, min. | 0.5 mm <sup>2</sup> |
| Wire connection cross section, finely stranded, max.                                    | 4 mm <sup>2</sup> | Wire connection cross section, finely stranded, min.                                    | 0.5 mm <sup>2</sup> |
| Conductor cross-section, max.   | 4 mm <sup>2</sup> | Conductor cross-section, min.   | 0.5 mm <sup>2</sup> |
| Basic material  | Copper alloy      | BG  | 4                   |

### Classifications

|             |             |             |             |
|-------------|-------------|-------------|-------------|
| ETIM 8.0    | EC000438    | ETIM 9.0    | EC000438    |
| ETIM 10.0   | EC000438    | ECLASS 14.0 | 27-44-02-05 |
| ECLASS 15.0 | 27-44-02-05 |             |             |

Drawings

