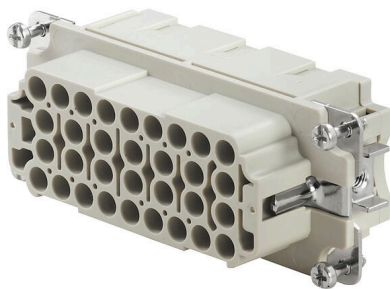


**HDC HEE 32 FC****Weidmüller Interface GmbH & Co. KG**Klingenbergstraße 26  
D-32758 Detmold  
Germany

www.weidmueller.com



The HEE series features high-density contacts and is designed based on the established HE inserts. The wire connection level is designed as a crimp contact. The established crimp connection has been used as a standard for decades. Crimp contacts are not delivered with the inserts.

Number of poles: 32

Rated current: 16 A

Rated voltage: 500 V

Nominal voltage acc. to UL/CSA: 600 V AC/DC

**General ordering data**

|            |  |
|------------|--|
| Version    | HDC insert, Female, 500 V, 16 A, Number of poles: 32, Crimp connection, Installation size: 6 |
| Order No.  | <a href="#">1826800000</a>   |
| Type       | HDC HEE 32 FC  |
| GTIN (EAN) | 4032248330201  |
| Qty.       | 1 items  |

Technical data

Approvals

Approvals



|                         |                            |
|-------------------------|----------------------------|
| ROHS                    | Conform                    |
| UL File Number Search   | <a href="#">UL Website</a> |
| Certificate No. (cURus) | E92202                     |

Dimensions and weights

|            |         |                 |             |
|------------|---------|-----------------|-------------|
| Depth      | 84.5 mm | Depth (inches)  | 3.3268 inch |
| Height     | 36 mm   | Height (inches) | 1.4173 inch |
| Width      | 34 mm   | Width (inches)  | 1.3386 inch |
| Net weight | 65 g    |                 |             |

Temperatures

|                   |                   |
|-------------------|-------------------|
| Limit temperature | -40 °C ... 125 °C |
|-------------------|-------------------|

Environmental Product Compliance

|                        |  |
|------------------------|--|
| RoHS Compliance Status | Compliant without exemption                    |
| REACH SVHC             | Potassium perfluorobutane sulfonate 29420-49-3 |
| SCIP                   | 1609748e-c278-4c9b-b3d1-e6215d2988cd           |

|                     |                          |                           |
|---------------------|--------------------------|---------------------------|
| Chemical resistance | Substance                | Acetone                   |
|                     | Chemical resistance      | Resistant                 |
|                     | Substance                | Ammonia, watery           |
|                     | Chemical resistance      | Conditionally resistant   |
|                     | Substance                | Petrol                    |
|                     | Chemical resistance      | Resistant                 |
|                     | Substance                | Benzene                   |
|                     | Chemical resistance      | Resistant                 |
|                     | Substance                | Diesel oil                |
|                     | Chemical resistance      | Conditionally resistant   |
|                     | Substance                | Acetic acid, concentrated |
|                     | Chemical resistance      | Resistant                 |
|                     | Substance                | Potassium hydroxide       |
|                     | Chemical resistance      | Conditionally resistant   |
|                     | Substance                | Methanol                  |
|                     | Chemical resistance      | Conditionally resistant   |
|                     | Substance                | Motor oil                 |
|                     | Chemical resistance      | Conditionally resistant   |
| Substance           | Lye, diluted             |                           |
| Chemical resistance | Resistant                |                           |
| Substance           | Hydrochlorofluorocarbons |                           |
| Chemical resistance | Conditionally resistant  |                           |
| Substance           | Outdoor use              |                           |
| Chemical resistance | Conditionally resistant  |                           |

Dimensions

|                  |       |                   |         |
|------------------|-------|-------------------|---------|
| Width            | 34 mm | Total length base | 84.5 mm |
| Height of socket | 36 mm |                   |         |

## HDC HEE 32 FC

Weidmüller Interface GmbH &amp; Co. KG

Klingenbergstraße 26

D-32758 Detmold

Germany

www.weidmueller.com

## Technical data

## General data

|                                      |              |                                   |   |
|--------------------------------------|--------------|-----------------------------------|---|
| Number of poles                      | 32           | Plugging cycles, silver           | ≥ 500   |
| Plugging cycles, gold                | ≥ 500        | Type of connection                | Crimp connection  |
| Installation size                    | 6            | UL 94 flammability rating         | V-0   |
| Volume resistance                    | ≤2 mΩ        | Colour                            | beige   |
| Insulation resistance                | 1010 Ω       | Insulating material               | PC glass-fibre reinforced (UL-listed and railway-certified) |
| Insulating material group            | IIIa         | Conductor cross-section           | 4 mm <sup>2</sup>   |
| Type                                 | Female       | Pollution severity                | 3   |
| Basic material                       | Copper alloy | Series                            | HEE   |
| Rated voltage (DIN EN 61984)         | 500 V        | Rated voltage according to UL/CSA | 600 V AC/DC   |
| Rated impulse voltage (DIN EN 61984) | 6 kV         | Rated current (DIN EN 61984)      | 16 A  |
| Free from halogens                   | true         | Low smoke acc. DIN EN 45545-2     | Yes   |
| BG                                   | 6            |                                   |   |

## Connection data PE

|                                       |                  |                                       |                   |
|---------------------------------------|------------------|---------------------------------------|-------------------|
| Connection type PE                    | Screw connection | Blade size, slotted (PE connection)   | SD 0.8 x 4.0      |
| Stripping length PE connection        | 10 mm            | Blade size, crosshead                 | size PH1          |
| Tightening torque, max. PE connection | 1.5 Nm           | Tightening torque, min. PE connection | 1.2 Nm            |
| Fixing screw                          | M 4              | Rated cross-section                   | 4 mm <sup>2</sup> |
| Wire cross section, AWG (PE), min.    | AWG 20           | Wire cross section, AWG (PE), max.    | AWG 12            |

## Version

|   |                   |   |                     |
|---|-------------------|---|---------------------|
| Wire connection cross section AWG, max.   | AWG 12            | Stripping length, rated connection  | 7.5 mm              |
| Type of connection  | Crimp connection  | Installation size   | 6                   |
| Volume resistance   | ≤2 mΩ             | Wire connection cross section AWG, min.   | AWG 20              |
| Wire cross-section, solid, max.   | 4 mm <sup>2</sup> | Wire cross-section, solid, min.   | 0.5 mm <sup>2</sup> |
| Wire connection cross-section, finely stranded with wire-end ferrules DIN 46228/4, max. | 4 mm <sup>2</sup> | Wire connection cross-section, finely stranded with wire-end ferrules DIN 46228/4, min. | 0.5 mm <sup>2</sup> |
| Wire connection cross section, finely stranded, max.                                    | 4 mm <sup>2</sup> | Wire connection cross section, finely stranded, min.                                    | 0.5 mm <sup>2</sup> |
| Conductor cross-section, max.   | 4 mm <sup>2</sup> | Conductor cross-section, min.   | 0.5 mm <sup>2</sup> |
| Basic material  | Copper alloy      | BG  | 6                   |

## Classifications

|             |             |             |             |
|-------------|-------------|-------------|-------------|
| ETIM 8.0    | EC000438    | ETIM 9.0    | EC000438    |
| ETIM 10.0   | EC000438    | ECLASS 14.0 | 27-44-02-05 |
| ECLASS 15.0 | 27-44-02-05 |             |             |

Drawings



## Accessories

## Slotted screwdriver



VDE insulated slot-head screwdriver, SDI DIN 7437, ISO 2380/2, drive output acc. to DIN 5264, ISO 2380/1. SoftFinish grip

## General ordering data

|            |                            |                          |
|------------|----------------------------|--------------------------|
| Type       | SDIS 0.6X3.5X100           | Version                  |
| Order No.  | <a href="#">9008390000</a> | Screwdriver, Screwdriver |
| GTIN (EAN) | 4032248056354              |                          |
| Qty.       | 1 ST                       |                          |
| Type       | SDS 0.6X3.5X100            | Version                  |
| Order No.  | <a href="#">9008330000</a> | Screwdriver, Screwdriver |
| GTIN (EAN) | 4032248056286              |                          |
| Qty.       | 1 ST                       |                          |
| Type       | SDIS 0.8X4.0X100           | Version                  |
| Order No.  | <a href="#">9008400000</a> | Screwdriver, Screwdriver |
| GTIN (EAN) | 4032248056361              |                          |
| Qty.       | 1 ST                       |                          |
| Type       | SDS 0.8X4.0X100            | Version                  |
| Order No.  | <a href="#">9008340000</a> | Screwdriver, Screwdriver |
| GTIN (EAN) | 4032248056293              |                          |
| Qty.       | 1 ST                       |                          |

## Crosshead screwdriver Phillips



VDE insulated crosshead screwdriver, for Phillips screws, SDIK PH DIN 7438, ISO 8764/2-PH, output to ISO 8764-PH, SoftFinish grip

## General ordering data

|            |                            |                          |
|------------|----------------------------|--------------------------|
| Type       | SDIK PH1                   | Version                  |
| Order No.  | <a href="#">9008570000</a> | Screwdriver, Screwdriver |
| GTIN (EAN) | 4032248056569              |                          |
| Qty.       | 1 ST                       |                          |
| Type       | SDK PH1                    | Version                  |
| Order No.  | <a href="#">9008480000</a> | Screwdriver, Screwdriver |
| GTIN (EAN) | 4032248056477              |                          |
| Qty.       | 1 ST                       |                          |

## HDC HEE 32 FC

**Weidmüller Interface GmbH & Co. KG**  
 Klingenbergstraße 26  
 D-32758 Detmold  
 Germany

www.weidmueller.com

## Accessories

### Crimping tools



Crimping tools for turned contacts

- Ratchet guarantees precise crimping
- Release option in the event of incorrect operation
- With stop for exact positioning of the contacts.

### General ordering data

|            |                            |   |
|------------|----------------------------|---|
| Type       | CTX CM 1.6/2.5             | Version   |
| Order No.  | <a href="#">9018490000</a> | Pressing tool, Crimping tool for contacts, 0.14mm <sup>2</sup> , 4mm <sup>2</sup> , W crimp |
| GTIN (EAN) | 40081908884598             |   |
| Qty.       | 1 ST                       |   |

|            |                            |  |
|------------|----------------------------|--|
| Type       | CTIN CM 1.6/2.5            | Version  |
| Order No.  | <a href="#">9205430000</a> | Pressing tool, Crimping tool for contacts, 0.14mm <sup>2</sup> , 6mm <sup>2</sup> , 4-indent crimp |
| GTIN (EAN) | 4032248733446              |  |
| Qty.       | 1 ST                       |  |

### Contact removal tools



Weidmüller offers a variety of crimping tools, contact removal tools, and fibre optic tools.

### General ordering data

|            |                            |                             |
|------------|----------------------------|-----------------------------|
| Type       | REMOVAL TOOL HE            | Version                     |
| Order No.  | <a href="#">1866750000</a> | Tools, Contact Removal Tool |
| GTIN (EAN) | 4032248437078              |                             |
| Qty.       | 1 ST                       |                             |

### HE

Various accessories are available for our inserts. This includes coding elements for the inserts.



## HDC HEE 32 FC

**Weidmüller Interface GmbH & Co. KG**  
 Klingenbergstraße 26  
 D-32758 Detmold  
 Germany

www.weidmueller.com

## Accessories

## General ordering data

|            |                            |   |  |
|------------|----------------------------|---|--|
| Type       | HDC HE CP                  | Version   |  |
| Order No.  | <a href="#">1003240000</a> | Heavy-duty connectors, Accessories, Coding System |  |
| GTIN (EAN) | 4032248698233              |   |  |
| Qty.       | 100 ST                     |   |  |

## Crimp contacts HE



Crimps provide a electrical and mechanical connection between wire and contact that is both secure and reliable. The optimal crimp connection is gas-tight and corrosion-resistant.

## General ordering data

|            |                            |  |  |
|------------|----------------------------|--|--|
| Type       | HDC-C-HE-BM0.5AG           | Version  |  |
| Order No.  | <a href="#">1201100000</a> | Heavy-duty connectors, Crimp contact, HE, HEE, HQ, MixMate, Female, Conductor cross-section, max.: 0.5, turned, Copper alloy |  |
| GTIN (EAN) | 4008190142698              |  |  |
| Qty.       | 100 ST                     |  |  |
| Type       | HDC-C-HE-BM0.75-1.00AG     | Version  |  |
| Order No.  | <a href="#">1201200000</a> | Heavy-duty connectors, Crimp contact, HE, HEE, HQ, MixMate, Female, Conductor cross-section, max.: 1, turned, Copper alloy   |  |
| GTIN (EAN) | 4008190044480              |  |  |
| Qty.       | 100 ST                     |  |  |
| Type       | HDC-C-HE-BM1.5AG           | Version  |  |
| Order No.  | <a href="#">1201300000</a> | Heavy-duty connectors, Crimp contact, HE, HEE, HQ, MixMate, Female, Conductor cross-section, max.: 1.5, turned, Copper alloy |  |
| GTIN (EAN) | 4008190100346              |  |  |
| Qty.       | 100 ST                     |  |  |
| Type       | HDC-C-HE-BM2.5AG           | Version  |  |
| Order No.  | <a href="#">1201400000</a> | Heavy-duty connectors, Crimp contact, HE, HEE, HQ, MixMate, Female, Conductor cross-section, max.: 2.5, turned, Copper alloy |  |
| GTIN (EAN) | 4008190047078              |  |  |
| Qty.       | 100 ST                     |  |  |
| Type       | HDC-C-HE-BM4.0AG           | Version  |  |
| Order No.  | <a href="#">1201500000</a> | Heavy-duty connectors, Crimp contact, HE, HEE, HQ, MixMate, Female, Conductor cross-section, max.: 4, turned, Copper alloy   |  |
| GTIN (EAN) | 4008190148096              |  |  |
| Qty.       | 100 ST                     |  |  |
| Type       | HDC-C-HE-BM0.5AU           | Version  |  |
| Order No.  | <a href="#">1651470000</a> | Heavy-duty connectors, Crimp contact, HE, HEE, HQ, MixMate, Female, Conductor cross-section, max.: 0.5, turned, Copper alloy |  |
| GTIN (EAN) | 4008190400149              |  |  |
| Qty.       | 100 ST                     |  |  |
| Type       | HDC-C-HE-BM0.75-1.00AU     | Version  |  |
| Order No.  | <a href="#">1651480000</a> | Heavy-duty connectors, Crimp contact, HE, HEE, HQ, MixMate, Female, Conductor cross-section, max.: 1, turned, Copper alloy   |  |
| GTIN (EAN) | 4008190400156              |  |  |
| Qty.       | 100 ST                     |  |  |
| Type       | HDC-C-HE-BM1.5AU           | Version  |  |
| Order No.  | <a href="#">1651490000</a> | Heavy-duty connectors, Crimp contact, HE, HEE, HQ, MixMate, Female, Conductor cross-section, max.: 1.5, turned, Copper alloy |  |
| GTIN (EAN) | 4008190400163              |  |  |
| Qty.       | 100 ST                     |  |  |

## HDC HEE 32 FC

**Weidmüller Interface GmbH & Co. KG**  
 Klingenbergstraße 26  
 D-32758 Detmold  
 Germany

www.weidmueller.com

## Accessories

|            |                            |  |
|------------|----------------------------|--|
| Type       | HDC-C-HE-BM2.5AU           | Version  |
| Order No.  | <a href="#">1651500000</a> | Heavy-duty connectors, Crimp contact, HE, HEE, HQ, MixMate,      |
| GTIN (EAN) | 4008190400170              | Female, Conductor cross-section, max.: 2.5, turned, Copper alloy |
| Qty.       | 100 ST                     |  |
| Type       | HDC-C-HE-BM4.0AU           | Version  |
| Order No.  | <a href="#">1651510000</a> | Heavy-duty connectors, Crimp contact, HE, HEE, HQ, MixMate,      |
| GTIN (EAN) | 4008190400187              | Female, Conductor cross-section, max.: 4, turned, Copper alloy   |
| Qty.       | 100 ST                     |  |

## DSTV

Various accessories are available for our inserts. This includes coding elements for the inserts.



## General ordering data

|            |                            |  |
|------------|----------------------------|--|
| Type       | DSTV COBU5                 | Version  |
| Order No.  | <a href="#">1471500000</a> | Heavy-duty connectors, Accessories, Coding element |
| GTIN (EAN) | 4008190178543              |  |
| Qty.       | 100 ST                     |  |
| Type       | DSTV COST4                 | Version  |
| Order No.  | <a href="#">1471300000</a> | Heavy-duty connectors, Accessories, Coding System  |
| GTIN (EAN) | 4008190017354              |  |
| Qty.       | 100 ST                     |  |