

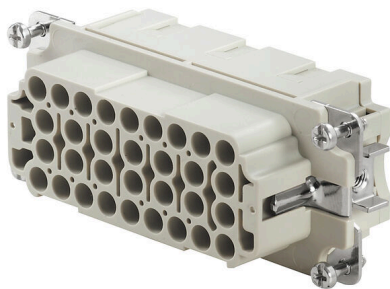
HDC HEE 32 FC**Weidmüller Interface GmbH & Co. KG**

Klingenbergstraße 26

D-32758 Detmold

Germany

www.weidmueller.com



The HEE series features high-density contacts and is designed based on the established HE inserts. The wire connection level is designed as a crimp contact. The established crimp connection has been used as a standard for decades. Crimp contacts are not delivered with the inserts.

Number of poles: 32

Rated current: 16 A

Rated voltage: 500 V

Nominal voltage acc. to UL/CSA: 600 V AC/DC

General ordering data

| | |
|------------|--|
| Version | HDC insert, Female, 500 V, 16 A, Number of poles: 32, Crimp connection, Installation size: 6 |
| Order No. | 1826800000 |
| Type | HDC HEE 32 FC |
| GTIN (EAN) | 4032248330201 |
| Qty. | 1 items |

Technical data

Approvals

Approvals



| | |
|-------------------------|----------------------------|
| ROHS | Conform |
| UL File Number Search | UL Website |
| Certificate No. (cURus) | E92202 |

Dimensions and weights

| | | | |
|------------|---------|-----------------|-------------|
| Depth | 84.5 mm | Depth (inches) | 3.3268 inch |
| Height | 36 mm | Height (inches) | 1.4173 inch |
| Width | 34 mm | Width (inches) | 1.3386 inch |
| Net weight | 65 g | | |

Temperatures

| | |
|-------------------|-------------------|
| Limit temperature | -40 °C ... 125 °C |
|-------------------|-------------------|

Environmental Product Compliance

| | |
|------------------------|--|
| RoHS Compliance Status | Compliant without exemption |
| REACH SVHC | Potassium perfluorobutane sulfonate 29420-49-3 |
| SCIP | 1609748e-c278-4c9b-b3d1-e6215d2988cd |

| | | |
|---------------------|--------------------------|---------------------------|
| Chemical resistance | Substance | Acetone |
| | Chemical resistance | Resistant |
| | Substance | Ammonia, watery |
| | Chemical resistance | Conditionally resistant |
| | Substance | Petrol |
| | Chemical resistance | Resistant |
| | Substance | Benzene |
| | Chemical resistance | Resistant |
| | Substance | Diesel oil |
| | Chemical resistance | Conditionally resistant |
| | Substance | Acetic acid, concentrated |
| | Chemical resistance | Resistant |
| | Substance | Potassium hydroxide |
| | Chemical resistance | Conditionally resistant |
| | Substance | Methanol |
| | Chemical resistance | Conditionally resistant |
| | Substance | Motor oil |
| | Chemical resistance | Conditionally resistant |
| | Substance | Lye, diluted |
| | Chemical resistance | Resistant |
| Substance | Hydrochlorofluorocarbons | |
| Chemical resistance | Conditionally resistant | |
| Substance | Outdoor use | |
| Chemical resistance | Conditionally resistant | |

Dimensions

| | | | |
|------------------|-------|-------------------|---------|
| Width | 34 mm | Total length base | 84.5 mm |
| Height of socket | 36 mm | | |

HDC HEE 32 FC

Weidmüller Interface GmbH & Co. KG

Klingenbergstraße 26
D-32758 Detmold
Germany

www.weidmueller.com

Technical data

General data

| | | | |
|---------------------------------------|---|---------------------------------------|--------------|
| Number of poles | 32 | Tightening torque | 0.5 Nm |
| Plugging cycles, silver | ≥ 500 | Plugging cycles, gold | ≥ 500 |
| Type of connection | Crimp connection | Installation size | 6 |
| UL 94 flammability rating | V-0 | Volume resistance | ≤2 mΩ |
| Colour | beige | Insulation resistance | 1010 Ω |
| Insulating material | PC glass-fibre reinforced (UL-listed and railway-certified) | Insulating material group | IIIa |
| Conductor cross-section | 4 mm ² | Tightening torque, max. PE connection | 1.5 Nm |
| Type | Female | Pollution severity | 3 |
| Tightening torque, min. PE connection | 1.2 Nm | Basic material | Copper alloy |
| Series | HEE | Rated voltage (DIN EN 61984) | 500 V |
| Rated voltage according to UL/CSA | 600 V AC/DC | Rated impulse voltage (DIN EN 61984) | 6 kV |
| Rated current (DIN EN 61984) | 16 A | Free from halogens | true |
| Low smoke acc. DIN EN 45545-2 | Yes | BG | 6 |

Connection data PE

| | | | |
|---------------------------------------|------------------|---------------------------------------|-------------------|
| Connection type PE | Screw connection | Blade size, slotted (PE connection) | SD 0.8 x 4.0 |
| Stripping length PE connection | 10 mm | Blade size, crosshead | size PH1 |
| Tightening torque, max. PE connection | 1.5 Nm | Tightening torque, min. PE connection | 1.2 Nm |
| Fixing screw | M 4 | Rated cross-section | 4 mm ² |
| Wire cross section, AWG (PE), min. | AWG 20 | Wire cross section, AWG (PE), max. | AWG 12 |

Version

| | | | |
|---|-------------------|---|---------------------|
| Wire connection cross section AWG, max. | AWG 12 | Stripping length, rated connection | 7.5 mm |
| Type of connection | Crimp connection | Installation size | 6 |
| Volume resistance | ≤2 mΩ | Wire connection cross section AWG, min. | AWG 20 |
| Wire cross-section, solid, max. | 4 mm ² | Wire cross-section, solid, min. | 0.5 mm ² |
| Wire connection cross-section, finely stranded with wire-end ferrules DIN 46228/4, max. | 4 mm ² | Wire connection cross-section, finely stranded with wire-end ferrules DIN 46228/4, min. | 0.5 mm ² |
| Wire connection cross section, finely stranded, max. | 4 mm ² | Wire connection cross section, finely stranded, min. | 0.5 mm ² |
| Conductor cross-section, max. | 4 mm ² | Conductor cross-section, min. | 0.5 mm ² |
| Basic material | Copper alloy | BG | 6 |

Classifications

| | | | |
|-------------|-------------|-------------|-------------|
| ETIM 8.0 | EC000438 | ETIM 9.0 | EC000438 |
| ETIM 10.0 | EC000438 | ECLASS 14.0 | 27-44-02-05 |
| ECLASS 15.0 | 27-44-02-05 | | |

Drawings

