

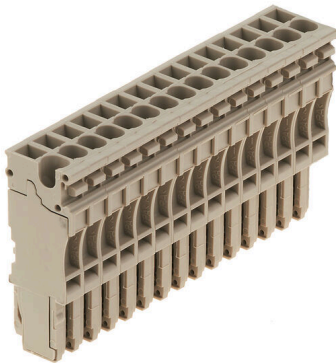
**ZP 2.5/1AN/15****Weidmüller Interface GmbH & Co. KG**

Klingenbergstraße 26

D-32758 Detmold

Germany

www.weidmueller.com

**Product image**

The plugs for our WeiCoS-System are available for all different connection systems. The product range includes preassembled connectors from 1 to 10 poles and the possibility of an individual assembly. This ensures maximum flexibility for every application. The customized accessories increase the safety and protection against environmental influences.

**General ordering data**

|            |  |
|------------|--|
| Version    | Z-series, Plug-in connector, dark beige, Direct mounting |
| Order No.  | <a href="#">1815610000</a>                               |
| Type       | ZP 2.5/1AN/15  |
| GTIN (EAN) | 4032248342747  |
| Qty.       | 10 items   |

## ZP 2.5/1AN/15

Weidmüller Interface GmbH &amp; Co. KG

Klingenbergstraße 26

D-32758 Detmold

Germany

www.weidmueller.com

## Technical data

## Approvals

Approvals



ROHS Conform

UL File Number Search [UL Website](#)

Certificate No. (cURus) E60693

## Dimensions and weights

|            |         |                 |             |
|------------|---------|-----------------|-------------|
| Depth      | 41 mm   | Depth (inches)  | 1.6142 inch |
| Height     | 16.5 mm | Height (inches) | 0.6496 inch |
| Width      | 76.5 mm | Width (inches)  | 3.0118 inch |
| Net weight | 49 g    |                 |             |

## Temperatures

|                                  |                |                                  |                |
|----------------------------------|----------------|----------------------------------|----------------|
| Storage temperature              | -25 °C...55 °C | Ambient temperature              | -50 °C...75 °C |
| Continuous operating temp., min. | -50 °C         | Continuous operating temp., max. | 120 °C         |

## Environmental Product Compliance

|                        |                             |
|------------------------|-----------------------------|
| RoHS Compliance Status | Compliant without exemption |
| REACH SVHC             | No SVHC above 0.1 wt%       |

## Material data

|                           |       |        |            |
|---------------------------|-------|--------|------------|
| Basic material            | Wemid | Colour | dark beige |
| UL 94 flammability rating | V-0   |        |            |

## System specifications

|                                     |   |                                   |    |
|-------------------------------------|---|-----------------------------------|----|
| Version                             | Plug-in connector, Tension-clamp connection | End cover plate required          | No |
| Number of potentials                | 15  | Number of levels                  | 1  |
| Number of clamping points per level | 1   | Levels cross-connected internally | No |
| PE connection                       | No  |                                   |    |

## Additional technical data

|                  |         |                     |                 |
|------------------|---------|---------------------|-----------------|
| Open sides       | closed  | Installation advice | Direct mounting |
| Type of mounting | Plugged |                     |                 |

## CSA rating data

|                                   |                |                                   |        |
|-----------------------------------|----------------|-----------------------------------|--------|
| Voltage size C (cCSAus)           | 300 V          | Current size D (cCSAus)           | 5 A    |
| Wire cross section min. (cCSAusX) | 26 AWG         | Current size C (cCSAus)           | 20 A   |
| Certificate number (cCSAus)       | 154685-1460993 | Wire cross section max. (cCSAusX) | 12 AWG |
| Voltage size D (cCSAus)           | 600 V          |                                   |        |

## Conductors for clamping (rated connection)

|                      |     |   |        |
|----------------------|-----|---|--------|
| Gauge to IEC 60947-1 | A2  | Wire connection cross section AWG, max. | AWG 26 |
| Connection direction | top | Stripping length                        | 10 mm  |

## Technical data

|   |                      |   |                      |
|---|----------------------|---|----------------------|
| Type of connection  | Plug-in connection   | Number of connections   | 15                   |
| Clamping range, max.  | 4 mm <sup>2</sup>    | Clamping range, min.  | 0.13 mm <sup>2</sup> |
| Blade size  | 0.6 x 3.5 mm         | Wire connection cross section AWG, min.   | AWG 12               |
| Wire connection cross-section, finely stranded with wire-end ferrules DIN 46228/4, max. | 2.5 mm <sup>2</sup>  | Wire connection cross-section, finely stranded with wire-end ferrules DIN 46228/4, min. | 0.13 mm <sup>2</sup> |
| Wire connection cross-section, finely stranded with wire-end ferrules DIN 46228/1, max. | 2.5 mm <sup>2</sup>  | Wire connection cross-section, finely stranded with wire-end ferrules DIN 46228/1, min. | 0.13 mm <sup>2</sup> |
| Wire connection cross section, finely stranded, max.                                    | 4 mm <sup>2</sup>    | Wire connection cross section, finely stranded, min.                                    | 0.13 mm <sup>2</sup> |
| Connection cross-section, stranded, min.  | 0.13 mm <sup>2</sup> | Wire connection cross-section, solid core, max.   | 4 mm <sup>2</sup>    |
| Wire connection cross-section, solid core, min.   | 0.13 mm <sup>2</sup> |   |                      |

### General

|                     |                                  |   |        |
|---------------------|----------------------------------|---|--------|
| Number of poles     | 15                               | Wire connection cross section AWG, max. | AWG 26 |
| Installation advice | Direct mounting                  | Wire connection cross section AWG, min. | AWG 12 |
| Standards           | In accordance with IEC 60947-7-1 |   |        |

### Rating data

|  |                     |  |                                  |
|--|---------------------|--|----------------------------------|
| Rated cross-section                                  | 2.5 mm <sup>2</sup> | Rated voltage                                    | 500 V                            |
| Rated voltage to adjoining terminal                  | 500 V               | Max. voltage of clamp support & pluggable system | 690 V                            |
| Rated DC voltage                                     | 500 V               | Nominal current                                  | 24 A                             |
| Current at maximum wires                             | 24 A                | Standards  | In accordance with IEC 60947-7-1 |
| Volume resistance according to IEC 60947-7-x         | 1.33 mΩ             | Rated impulse withstand voltage                  | 6 kV                             |
| Rated impulse withstand voltage to adjacent terminal | 6 kV                | Power loss in accordance with IEC 60947-7-x      | 0.77 W                           |
| Pollution severity                                   | 3                   |  |                                  |

### UL rating data

|  |        |  |        |
|--|--------|--|--------|
| Conductor size Factory wiring max. (cURus) | 12 AWG | Voltage size D (cURus)                   | 600 V  |
| Certificate No. (cURus)                    | E60693 | Conductor size Field wiring min. (cURus) | 26 AWG |
| Conductor size Factory wiring min. (cURus) | 26 AWG | Voltage size C (cURus)                   | 300 V  |
| Current size C (cURus)                     | 20 A   | Current size D (cURus)                   | 5 A    |
| Conductor size Field wiring max. (cURus)   | 12 AWG |  |        |

### Classifications

|             |             |             |             |
|-------------|-------------|-------------|-------------|
| ETIM 8.0    | EC002848    | ETIM 9.0    | EC002848    |
| ETIM 10.0   | EC002848    | ECLASS 14.0 | 27-25-03-90 |
| ECLASS 15.0 | 27-25-03-90 |             |             |

## ZP 2.5/1AN/15

**Weidmüller Interface GmbH & Co. KG**  
 Klingenbergstraße 26  
 D-32758 Detmold  
 Germany

www.weidmueller.com

## Accessories

### Testadapter and testsockets



Test adapters and test plugs are used for the electrical connection between terminal blocks and the test equipment. In this way, an electrical contact can be established in the wired state and measurements can be done easily.

### General ordering data

|            |                            |                                   |  |
|------------|----------------------------|-----------------------------------|--|
| Type       | ZTA ZT2.5                  | Version                           |  |
| Order No.  | <a href="#">1827080000</a> | Accessories, Test adapter, 17.5 A |  |
| GTIN (EAN) | 4032248411276              |                                   |  |
| Qty.       | 25 ST                      |                                   |  |
| Type       | ZTA ZT2.5/ZA               | Version                           |  |
| Order No.  | <a href="#">1847600000</a> | Accessories, Test adapter, 17.5 A |  |
| GTIN (EAN) | 4032248412679              |                                   |  |
| Qty.       | 25 ST                      |                                   |  |

### Slotted screwdriver



Slotted screwdriver with rounded blade SD DIN 5265, ISO 2380/2, output to DIN 5264, ISO 2380/1. ChromTop tip, SoftFinish grip

### General ordering data

|            |                            |                          |  |
|------------|----------------------------|--------------------------|--|
| Type       | SDS 0.6X3.5X100            | Version                  |  |
| Order No.  | <a href="#">9008330000</a> | Screwdriver, Screwdriver |  |
| GTIN (EAN) | 4032248056286              |                          |  |
| Qty.       | 1 ST                       |                          |  |

## ZP 2.5/1AN/15

**Weidmüller Interface GmbH & Co. KG**  
 Klingenbergstraße 26  
 D-32758 Detmold  
 Germany

## Accessories

www.weidmueller.com

## Blank



The Dekafix (DEK) marker is the universal marker for all conductor and plug-in connectors as well as for electronic sub-assemblies. The system is ideal for short number sequences and covers a wide range of ready-printed markers.

Strips for fast installation in only one work step. The printing is easy to read, rich in contrast and available in various widths.

- Large range of ready-to-use markers
  - Strips for fast installation
  - Terminal markers, suitable for all Weidmüller cable connectors
  - Available as blank MultiCard or with standard printing
- For custom printing: Please send us a file of our labeling software M-Print PRO or M-Print PRO Online (without installation) for your labeling specifications.

## General ordering data

|            |                            |   |  |
|------------|----------------------------|---|--|
| Type       | DEK 5/5 MC NE BL           | Version   |  |
| Order No.  | <a href="#">1609801693</a> | Dekafix, Terminal marker, 5 x 5 mm, Pitch in mm (P): 5.00 |  |
| GTIN (EAN) | 4008190397166              | Weidmueller, blue   |  |
| Qty.       | 1000 ST                    |   |  |

## STR transparent strips



## General ordering data

|            |                            |  |  |
|------------|----------------------------|--|--|
| Type       | STR 7 F.SCHT 7             | Version  |  |
| Order No.  | <a href="#">0515300000</a> | Terminal markers, Protective cap, 27 x 6.3 mm, Transparent |  |
| GTIN (EAN) | 4008190182175              |  |  |
| Qty.       | 20 ST                      |  |  |

## ZP 2.5/1AN/15

**Weidmüller Interface GmbH & Co. KG**  
 Klingenbergstraße 26  
 D-32758 Detmold  
 Germany

## Accessories

www.weidmueller.com

## Blank



ZS markers - in proven MultiCard-format - have been developed specifically for the Z-series. They have a large printing area. The hinged mechanism even allows access to cross-connectors without dismantling. Quick installation is guaranteed by the fact that the single tags are clipped on in strips. The single tags are easy to separate.

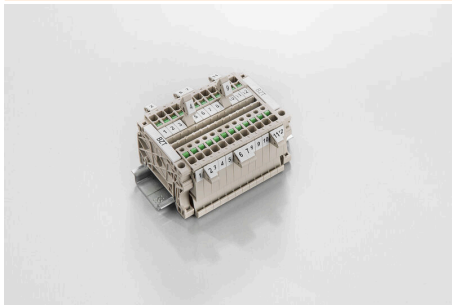
- Hinged marker area
- Can be fitted in strips or individually
- Markers in proven MultiCard format

For custom printing: Please send us a file of our labeling software M-Print PRO or M-Print PRO Online (without installation) for your labeling specifications.

## General ordering data

|            |                            |  |
|------------|----------------------------|--|
| Type       | ZS 10/5 MC NE WS           | Version  |
| Order No.  | <a href="#">1610000000</a> | ZS, Terminal marker, 10 x 5 mm, Pitch in mm (P): 5.00 Weidmueller, |
| GTIN (EAN) | 4008190263171              | Allen-Bradley, white   |
| Qty.       | 480 ST                     |  |
| Type       | WS 10/5 M MC NE WS         | Version  |
| Order No.  | <a href="#">1792000000</a> | WS, Terminal marker, 10 x 5 mm, Pitch in mm (P): 5.00 Weidmueller, |
| GTIN (EAN) | 4032248223862              | Allen-Bradley, white   |
| Qty.       | 720 ST                     |  |

## Marker holder



The marker holder offer the possibility of additional mounting of standard markers with a pitch of 5 or 5.1 mm. The angled holders can be optionally snapped together and could be mounted in all standard marking channels of the Klippon® Connect modular terminal blocks. Fitting marker types could be found under the respective accessories of the designation marking holder.

## General ordering data

|            |                            |                            |
|------------|----------------------------|----------------------------|
| Type       | BZT 1 WS 10/5              | Version                    |
| Order No.  | <a href="#">1805490000</a> | Accessories, Marker holder |
| GTIN (EAN) | 4032248270231              |                            |
| Qty.       | 100 ST                     |                            |
| Type       | BZT 1 ZA WS 10/5           | Version                    |
| Order No.  | <a href="#">1805520000</a> | Accessories, Marker holder |
| GTIN (EAN) | 4032248270248              |                            |
| Qty.       | 100 ST                     |                            |