

ZP 2.5/1AN/14

Weidmüller Interface GmbH & Co. KG

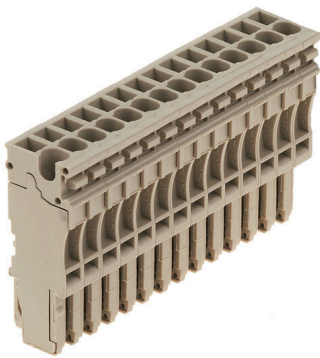
Klingenbergstraße 26

D-32758 Detmold

Germany

www.weidmueller.com

Product image



The plugs for our WeiCoS-System are available for all different connection systems. The product range includes preassembled connectors from 1 to 10 poles and the possibility of an individual assembly. This ensures maximum flexibility for every application. The customized accessories increase the safety and protection against environmental influences.

General ordering data

| | |
|------------|--|
| Version | Z-series, Plug-in connector, dark beige, Direct mounting |
| Order No. | 181560000 |
| Type | ZP 2.5/1AN/14 |
| GTIN (EAN) | 4032248342730 |
| Qty. | 10 items |

ZP 2.5/1AN/14

Weidmüller Interface GmbH & Co. KG

Klingenbergstraße 26

D-32758 Detmold

Germany

www.weidmueller.com

Technical data

Approvals

Approvals



ROHS Conform

UL File Number Search [UL Website](#)

Certificate No. (cURus) E60693

Dimensions and weights

| | | | |
|------------|---------|-----------------|-------------|
| Depth | 41 mm | Depth (inches) | 1.6142 inch |
| Height | 16.5 mm | Height (inches) | 0.6496 inch |
| Width | 71.4 mm | Width (inches) | 2.811 inch |
| Net weight | 40.57 g | | |

Temperatures

| | | | |
|----------------------------------|----------------|----------------------------------|----------------|
| Storage temperature | -25 °C...55 °C | Ambient temperature | -50 °C...75 °C |
| Continuous operating temp., min. | -50 °C | Continuous operating temp., max. | 120 °C |

Environmental Product Compliance

| | |
|------------------------|-----------------------------|
| RoHS Compliance Status | Compliant without exemption |
| REACH SVHC | No SVHC above 0.1 wt% |

Material data

| | | | |
|---------------------------|-------|--------|------------|
| Basic material | Wemid | Colour | dark beige |
| UL 94 flammability rating | V-0 | | |

System specifications

| | | | |
|-------------------------------------|---|-----------------------------------|----|
| Version | Plug-in connector, Tension-clamp connection | End cover plate required | No |
| Number of potentials | 14 | Number of levels | 1 |
| Number of clamping points per level | 1 | Levels cross-connected internally | No |
| PE connection | No | | |

Additional technical data

| | | | |
|------------------|---------|---------------------|-----------------|
| Open sides | closed | Installation advice | Direct mounting |
| Type of mounting | Plugged | | |

CSA rating data

| | | | |
|-----------------------------------|----------------|-----------------------------------|--------|
| Voltage size C (cCSAus) | 300 V | Current size D (cCSAus) | 5 A |
| Wire cross section min. (cCSAusX) | 26 AWG | Current size C (cCSAus) | 20 A |
| Certificate number (cCSAus) | 154685-1460993 | Wire cross section max. (cCSAusX) | 12 AWG |
| Voltage size D (cCSAus) | 600 V | | |

Conductors for clamping (rated connection)

| | | | |
|----------------------|-----|---|--------|
| Gauge to IEC 60947-1 | A2 | Wire connection cross section AWG, max. | AWG 12 |
| Connection direction | top | Stripping length | 10 mm |

Technical data

| | | | |
|---|----------------------|---|----------------------|
| Type of connection | Plug-in connection | Number of connections | 14 |
| Clamping range, max. | 4 mm ² | Clamping range, min. | 0.13 mm ² |
| Blade size | 0.6 x 3.5 mm | Wire connection cross section AWG, min. | AWG 12 |
| Wire connection cross-section, finely stranded with wire-end ferrules DIN 46228/4, max. | 2.5 mm ² | Wire connection cross-section, finely stranded with wire-end ferrules DIN 46228/4, min. | 0.13 mm ² |
| Wire connection cross-section, finely stranded with wire-end ferrules DIN 46228/1, max. | 2.5 mm ² | Wire connection cross-section, finely stranded with wire-end ferrules DIN 46228/1, min. | 0.13 mm ² |
| Wire connection cross section, finely stranded, max. | 4 mm ² | Wire connection cross section, finely stranded, min. | 0.13 mm ² |
| Connection cross-section, stranded, min. | 0.13 mm ² | Wire connection cross-section, solid core, max. | 4 mm ² |
| Wire connection cross-section, solid core, min. | 0.13 mm ² | | |

General

| | | | |
|---------------------|----------------------------------|---|--------|
| Number of poles | 14 | Wire connection cross section AWG, max. | AWG 12 |
| Installation advice | Direct mounting | Wire connection cross section AWG, min. | AWG 12 |
| Standards | In accordance with IEC 60947-7-1 | | |

Rating data

| | | | |
|--|---------------------|--|----------------------------------|
| Rated cross-section | 2.5 mm ² | Rated voltage | 500 V |
| Rated voltage to adjoining terminal | 500 V | Max. voltage of clamp support & pluggable system | 690 V |
| Rated DC voltage | 500 V | Nominal current | 24 A |
| Current at maximum wires | 24 A | Standards | In accordance with IEC 60947-7-1 |
| Volume resistance according to IEC 60947-7-x | 1.33 mΩ | Rated impulse withstand voltage | 6 kV |
| Rated impulse withstand voltage to adjacent terminal | 6 kV | Power loss in accordance with IEC 60947-7-x | 0.77 W |
| Pollution severity | 3 | | |

UL rating data

| | | | |
|--|--------|--|--------|
| Conductor size Factory wiring max. (cURus) | 12 AWG | Voltage size D (cURus) | 600 V |
| Certificate No. (cURus) | E60693 | Conductor size Field wiring min. (cURus) | 26 AWG |
| Conductor size Factory wiring min. (cURus) | 26 AWG | Voltage size C (cURus) | 300 V |
| Current size C (cURus) | 20 A | Current size D (cURus) | 5 A |
| Conductor size Field wiring max. (cURus) | 12 AWG | | |

Classifications

| | | | |
|-------------|-------------|-------------|-------------|
| ETIM 8.0 | EC002848 | ETIM 9.0 | EC002848 |
| ETIM 10.0 | EC002848 | ECLASS 14.0 | 27-25-03-90 |
| ECLASS 15.0 | 27-25-03-90 | | |