

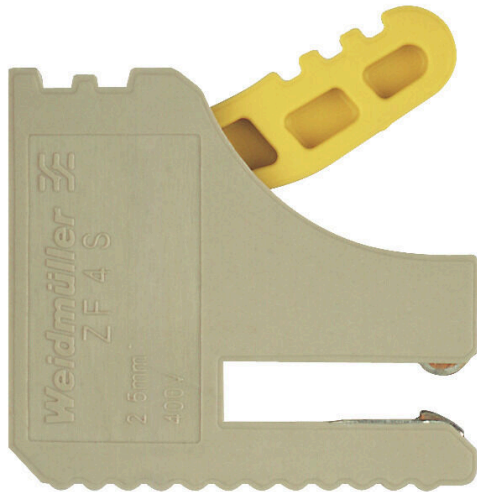
ZF 4 S**Weidmüller Interface GmbH & Co. KG**

Klingenbergstraße 26

D-32758 Detmold

Germany

www.weidmueller.com

Product image

Weidmueller offers tapping terminals for various types of bus bar systems. Depending on the application, a distinction can be made here between insulated and non-insulated tap-off terminals.

General ordering data

Version	Terminal (busbar connection)
Order No.	1814680000
Type	ZF 4 S
GTIN (EAN)	4032248302949
Qty.	50 items

ZF 4 S

Weidmüller Interface GmbH & Co. KG

Klingenbergstraße 26

D-32758 Detmold

Germany

www.weidmueller.com

Technical data

Approvals

ROHS	Conform
------	---------

Dimensions and weights

Depth	22 mm	Depth (inches)	0.8661 inch
Height	24.5 mm	Height (inches)	0.9646 inch
Width	6.1 mm	Width (inches)	0.2402 inch
Net weight	4.5 g		

Temperatures

Ambient temperature	-5 °C...40 °C	Continuous operating temp., min.	-50 °C
Continuous operating temp., max.	120 °C		

Environmental Product Compliance

RoHS Compliance Status	Compliant without exemption
REACH SVHC	No SVHC above 0.1 wt%

Material data

Basic material	Wemid	Insulating material	Wemid
Colour	silver	UL 94 flammability rating	V-0

System specifications

Version	for busbar 10 x 3 mm	End cover plate required	No
Number of potentials	1	Number of levels	1
Number of clamping points per level	1	Mounting rail	Busbar

Additional technical data

Installation advice	Direct mounting, Busbar	Type of mounting	Plugged
---------------------	-------------------------	------------------	---------

Conductors for clamping (rated connection)

Connection direction	on side	Stripping length	10 mm
Type of connection	Tension-clamp connection	Number of connections	1
Clamping range, max.	4 mm ²	Clamping range, min.	0.5 mm ²
Wire connection cross-section, finely stranded with wire-end ferrules DIN 46228/4, max.	2.5 mm ²	Wire connection cross-section, finely stranded with wire-end ferrules DIN 46228/4, min.	0.5 mm ²
Wire connection cross-section, finely stranded with wire-end ferrules DIN 46228/1, max.	2.5 mm ²	Wire connection cross-section, finely stranded with wire-end ferrules DIN 46228/1, min.	0.5 mm ²
Wire connection cross section, finely stranded, max.	2.5 mm ²	Wire connection cross section, finely stranded, min.	0.5 mm ²
Connection cross-section, stranded, max.	4 mm ²	Connection cross-section, stranded, min.	0.5 mm ²
Wire connection cross-section, solid core, max.	4 mm ²	Wire connection cross-section, solid core, min.	0.5 mm ²

General

Installation advice	Direct mounting, Busbar	Operating temperature range, max.	120 °C
Standards	IEC 60947-7-1	Mounting rail	Busbar

ZF 4 S

Weidmüller Interface GmbH & Co. KG

Klingenbergstraße 26
D-32758 Detmold
Germany

www.weidmueller.com

Technical data

Rating data

Rated cross-section	2.5 mm ²	Rated voltage	400 V
Rated DC voltage	400 V	Nominal current	24 A
Standards	IEC 60947-7-1	Volume resistance according to IEC 60947-7-x	1.33 mΩ
Rated impulse withstand voltage	6 kV	Power loss in accordance with IEC 60947-7-x	0.77 W
Surge voltage category	III	Pollution severity	3

Classifications

ETIM 8.0	EC000001	ETIM 9.0	EC000001
ETIM 10.0	EC000001	ECLASS 14.0	27-25-01-16
ECLASS 15.0	27-25-01-16		