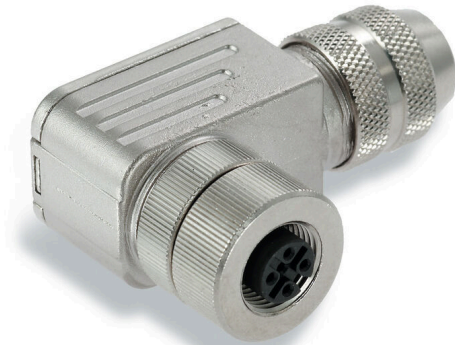


SAIBWS-M-5A-6/8-M12**Weidmüller Interface GmbH & Co. KG**

Klingenbergstraße 26

D-32758 Detmold

Germany

www.weidmueller.com

Individual cable lengths are often required nowadays. In order to meet these demands, Weidmüller offers a wide range of plug-in connectors for custom assembly. Male plugs and female socket for customisable assembly for M8, M12, M16 and 7/8" connections which are highly robust and ideally suited to machine engineering, for instance. The M12 plug-in connectors offer a choice of 5 different connection systems.

The screw connection can be used in a wide range of applications. With this technology the conductor, optionally with wire-end ferrules, can be plugged into connection elements and secured with a screw. It is the classic, cheapest form of connection technology that also supports multi-conductor connections.

General ordering data

Version	Field attachable connector, M12
Order No.	1803920000
Type	SAIBWS-M-5A-6/8-M12
GTIN (EAN)	4032248260232
Qty.	1 items

SAIBWS-M-5A-6/8-M12

Weidmüller Interface GmbH & Co. KG

Klingenbergstraße 26

D-32758 Detmold

Germany

www.weidmueller.com

Technical data

Approvals

Approvals



ROHS Conform

UL File Number Search [UL Website](#)

Certificate No. (cURus) E307231

Dimensions and weights

Net weight 70 g

Environmental Product Compliance

RoHS Compliance Status Compliant with exemption

RoHS Exemption (if applicable/known) 6c

REACH SVHC Lead 7439-92-1, Imidazolidine-2-thione 96-45-7

SCIP bcee35cf-c0f5-43d2-8daf-65ab0d08641a

Technical data customisable plug-in connectors

Number of poles	5	Coding	A-coded
Contact surface	Gold-plated	Type of connection	Screw connection
Housing main material	CuZn	Insulation resistance	108 Ω
Cable diameter, max.	8 mm	Cable diameter, min.	6 mm
Conductor cross-section, max.	0.75 mm ²	Conductor cross-section, min.	0.14 mm ²
Nominal voltage	60 V	Nominal current	4 A
Protection degree	IP67	Plugging cycles	≥ 100
Pollution severity	3	Gender of contact	Female
Shield connection	Yes	Threaded ring material	Diecast zinc
Temperature range of housing	-40 ... +85 °C		

General Info

Number of poles	5	Connection 1	M12
Connection 2	Screw	Housing main material	CuZn
Connection thread	M12	Contact surface	Gold-plated
Protection degree	IP67	Plugging cycles	≥ 100

Standards

Connector standard IEC 61076-2-101

Classifications

ETIM 8.0	EC002635	ETIM 9.0	EC002635
ETIM 10.0	EC002635	ECLASS 14.0	27-44-01-16
ECLASS 15.0	27-44-01-16		

Drawings

Pole scheme

