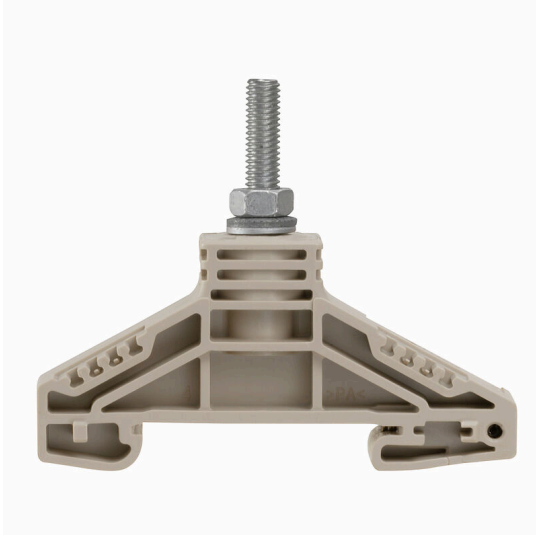


WF 5

Weidmüller Interface GmbH & Co. KG
 Klingenbergstraße 26
 D-32758 Detmold
 Germany

www.weidmueller.com

Product image



To feed through power, signal, and data is the classical requirement in electrical engineering and panel building. The insulating material, the connection system and the design of the terminal blocks are the differentiating features. A feed-through terminal block is suitable for joining and/or connecting one or more conductors. They could have one or more connection levels that are on the same potential or insulated against one another.

General ordering data

Version	Bolt-type screw terminals, Feed-through terminal, Rated cross-section: 16 mm ² , Threaded stud connection
Order No.	1790130000
Type	WF 5
GTIN (EAN)	4032248366637
Qty.	25 items

WF 5

Weidmüller Interface GmbH & Co. KG

Klingenbergstraße 26

D-32758 Detmold

Germany

www.weidmueller.com

Technical data

Approvals

Approvals



ROHS Conform

UL File Number Search [UL Website](#)

Certificate No. (UR) E60693

Dimensions and weights

Depth	54.5 mm	Depth (inches)	2.1457 inch
Height	67 mm	Height (inches)	2.6378 inch
Width	13 mm	Width (inches)	0.5118 inch
Net weight	20.21 g		

Temperatures

Storage temperature	-25 °C...55 °C	Ambient temperature	-5 °C...40 °C
Continuous operating temp., min.	-50 °C	Continuous operating temp., max.	120 °C

Environmental Product Compliance

RoHS Compliance Status	Compliant without exemption
REACH SVHC	No SVHC above 0.1 wt%

Material data

Basic material	Wemid	Colour	dark beige
UL 94 flammability rating	V-0		

System specifications

Version	Single-stud terminals	End cover plate required	No
Number of potentials	1	Number of levels	1
Number of clamping points per level	1	Levels cross-connected internally	No
PE connection	No	Mounting rail	TS 35

Additional technical data

Open sides	Open	Explosion-tested version	No
Type of mounting	Snap-on		

CSA rating data

Wire cross section max. (CSA)	4 AWG	Voltage size C (CSA)	1000 V
Current size C (CSA)	85 A	Certificate No. (CSA)	200039-1244019
Wire cross section min. (CSA)	10 AWG		

Conductors for clamping (rated connection)

Cable lug to DIN 46234	0.1...16 mm ²	Cable lug to DIN 46235	6...10 mm ²
Wire connection cross section AWG, max.	AWG 4	Connection direction	on side
Tightening torque, max.	4 Nm	Tightening torque, min.	2 Nm
Type of connection	Threaded stud connection	Number of connections	1

WF 5

Weidmüller Interface GmbH & Co. KG

Klingenbergstraße 26
D-32758 Detmold
Germany

www.weidmueller.com

Technical data

Clamping range, max.	16 mm ²	Clamping range, min.	0.1 mm ²
Wire connection cross section AWG, min.	AWG 27	Wire connection cross-section, finely stranded with wire-end ferrules DIN 46228/4, min.	0.1 mm ²
Wire connection cross-section, finely stranded with wire-end ferrules DIN 46228/1, min.	0.1 mm ²	Wire connection cross section, finely stranded, max.	16 mm ²
Wire connection cross section, finely stranded, min.	0.1 mm ²	Connection cross-section, stranded, max.	16 mm ²
Connection cross-section, stranded, min.	0.1 mm ²	Stud size for spade connection	M 5
Wire connection cross-section, solid core, max.	16 mm ²	Wire connection cross-section, solid core, min.	0.1 mm ²
Connection cross-section, finely stranded, min.	0.1 mm ²	2 x cable lugs DIN 46 235	6...10 mm ²
2 x cable lugs DIN 46 234	0.1 to 16 mm ²		

General

Wire connection cross section AWG, max.	AWG 4	Wire connection cross section AWG, min.	AWG 27
Standards	IEC 60947-7-1	Mounting rail	TS 35

Rating data

Rated cross-section	16 mm ²	Rated voltage	1000 V
Rated DC voltage	1000 V	Nominal current	76 A
Current at maximum wires	76 A	Standards	IEC 60947-7-1
Volume resistance according to IEC 60947-7-x	0.42 mΩ	Rated impulse withstand voltage	8 kV
Power loss in accordance with IEC 60947-7-x	2.43 W	Pollution severity	3

UL rating data

Conductor size Factory wiring max. (UR)	4 AWG	Current size C (UR)	85 A
Voltage size C (UR)	1000 V	Conductor size Factory wiring min. (UR)	10 AWG
Certificate No. (UR)	E60693	Conductor size Field wiring min. (UR)	10 AWG
Conductor size Field wiring max. (UR)	4 AWG		

Classifications

ETIM 8.0	EC000897	ETIM 9.0	EC000897
ETIM 10.0	EC000897	ECLASS 14.0	27-25-01-01
ECLASS 15.0	27-25-01-01		

Drawings

