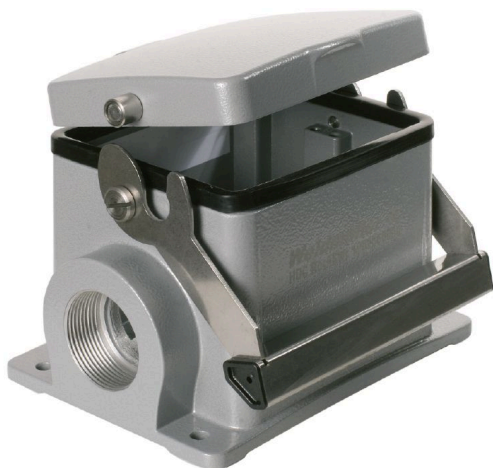


**HDC 32B SDLU 2M32G****Weidmüller Interface GmbH & Co. KG**

Klingenbergstraße 26

D-32758 Detmold

Germany

[www.weidmueller.com](http://www.weidmueller.com)

The special die-cast alloy and the multi-layered surface sealing provide complete protection for the HDC housings.

The cleverly designed interlock system is manufactured from stainless steel. This guarantees a long lifespan with high resistance to corrosion and impact.

The housing interlock system provides integrated safety. Our unique, patented spring system provides the housing interlock with a secure grip and prevents accidental opening.

The laser marking allows for easy and quick identification. Each housing is permanently labelled with a laser marking so that each product can be quickly designated and positioned.

Weidmüller RockStar® IP 65 / NEMA Type 4X housings - your first choice for industrial housings with IP 65 protection.

**General ordering data**

Version	HDC enclosures, Installation size: 10, Protection degree: IP65, in plugged condition, Base housing, End-locking clamp, lower side, Standard, with cover, Size of cable entries: M 32
Order No.	<a href="#">1788490000</a>
Type	HDC 32B SDLU 2M32G
GTIN (EAN)	4032248206025
Qty.	1 items

## HDC 32B SDLU 2M32G

Weidmüller Interface GmbH &amp; Co. KG

Klingenbergstraße 26

D-32758 Detmold

Germany

www.weidmueller.com

## Technical data

## Approvals

Approvals



ROHS Conform

UL File Number Search [UL Website](#)

Certificate No. (cURus) E92202

## Dimensions and weights

Depth	126 mm	Depth (inches)	4.9606 inch
Height	96 mm	Height (inches)	3.7795 inch
Width	143.1 mm	Width (inches)	5.6338 inch
Mounting dimension - height	67 mm	Mounting dimension - width	112 mm
Net weight	763 g		

## Temperatures

Limit temperature -40 °C ... 125 °C

## Environmental Product Compliance

RoHS Compliance Status Compliant without exemption

REACH SVHC Potassium perfluorobutane sulfonate 29420-49-3

SCIP e98b2b24-ba23-41bf-8d19-0dda3647412f

Chemical resistance	Substance	Acetone
	Chemical resistance	Conditionally resistant
	Substance	Drilling oil
	Chemical resistance	Resistant
	Substance	Diesel
	Chemical resistance	Resistant
	Substance	Ethyl alcohol
	Chemical resistance	Resistant
	Substance	Transmission oil
	Chemical resistance	Resistant
	Substance	Hydraulic oil
	Chemical resistance	Resistant
	Substance	Coolant
	Chemical resistance	Resistant
	Substance	Petroleum benzine
	Chemical resistance	Resistant
	Substance	Sweat
	Chemical resistance	Resistant
	Substance	Premium gasoline
	Chemical resistance	Conditionally resistant
	Substance	Water
	Chemical resistance	Resistant
	Substance	UV
	Chemical resistance	Unstable
	Substance	Ozone
	Chemical resistance	Unstable

## HDC 32B SDLU 2M32G

Weidmüller Interface GmbH &amp; Co. KG

Klingenbergstraße 26

D-32758 Detmold

Germany

www.weidmueller.com

## Technical data

## Dimensions

Hole pitch length A2	112 mm	Cable entry	w. thread
Width housing C	82.5 mm	Width base C1	92.5 mm
Total length housing	94 mm	Height of housing B	96 mm
Height of base B1	5 mm		

## General data

Tightening torque	2 Nm	Housing main material	diecast aluminium
Surface finish	Powder coating	Protection degree	IP65, in plugged condition
Protection class note	Protection class with secured cover: IP 65	EMC housings	No
Material of locking element	Stainless steel, rust-proof		

## Version

Size of cable entries	M 32	Top part/bottom part/lid	lower part
Cover	with cover	Tightening torque	2 Nm
Number of cable entry on top	0	Number of cable entry sideways	2
Design of cover	with cover	Design of housing	Base housing
Design of locking system	End-locking clamp, lower side	Design	Standard
Installation size	10	Cable entry	w. thread
Type	Base housing	Clamp version	End-locking clamp
Sealing	NBR	Internal thread	M 32
Colour (RAL)	RAL 7035	BG	10
Suitable for ModuPlug®	Yes		

## Classifications

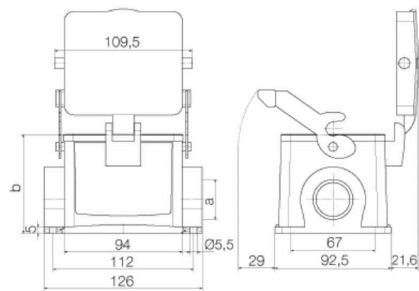
ETIM 6.0	EC000437	ETIM 7.0	EC000437
ETIM 8.0	EC000437	ETIM 9.0	EC000437
ETIM 10.0	EC000437	ECLASS 9.0	27-44-02-02
ECLASS 9.1	27-44-02-02	ECLASS 10.0	27-44-02-02
ECLASS 11.0	27-44-02-02	ECLASS 12.0	27-44-02-02
ECLASS 13.0	27-44-02-02	ECLASS 14.0	27-44-02-02
ECLASS 15.0	27-44-02-02		

## HDC 32B SDLU 2M32G

**Weidmüller Interface GmbH & Co. KG**  
Klingenbergstraße 26  
D-32758 Detmold  
Germany

[www.weidmueller.com](http://www.weidmueller.com)

## Drawings



## HDC 32B SDLU 2M32G

Weidmüller Interface GmbH &amp; Co. KG

Klingenbergstraße 26

D-32758 Detmold

Germany

www.weidmueller.com

## Accessories

## Housing, cable entry at top



The special die-cast alloy and the multi-layered surface sealing provide complete protection for the HDC housings.

The cleverly designed interlock system is manufactured from stainless steel. This guarantees a long lifespan with high resistance to corrosion and impact.

The housing interlock system provides integrated safety. Our unique, patented spring system provides the housing interlock with a secure grip and prevents accidental opening.

The laser marking allows for easy and quick identification. Each housing is permanently labelled with a laser marking so that each product can be quickly designated and positioned.

Weidmüller RockStar® IP 65 / NEMA Type 4X housings - your first choice for industrial housings with IP 65 protection.

## General ordering data

Type	HDC 32B TOLU 1M32G	Version
Order No.	<a href="#">1788450000</a>	HDC enclosures, Installation size: 10, Protection degree: IP65, in
GTIN (EAN)	4032248205981	plugged condition, Cable entry from top, Plug housing, End-locking
Qty.	1 ST	clamp, lower side, Standard, Size of cable entries: M 32
Type	HDC 32B TOLU 1PG29G	Version
Order No.	<a href="#">1219300000</a>	HDC enclosures, Installation size: 10, Protection degree: IP65, in
GTIN (EAN)	4008190164652	plugged condition, Cable entry from top, Plug housing, End-locking
Qty.	1 ST	clamp, lower side, Standard, Size of cable entries: PG 29

## Housing, cable entry sideways



The special die-cast alloy and the multi-layered surface sealing provide complete protection for the HDC housings.

The cleverly designed interlock system is manufactured from stainless steel. This guarantees a long lifespan with high resistance to corrosion and impact.

The housing interlock system provides integrated safety. Our unique, patented spring system provides the housing interlock with a secure grip and prevents accidental opening.

The laser marking allows for easy and quick identification. Each housing is permanently labelled with a laser marking so that each product can be quickly designated and positioned.

Weidmüller RockStar® IP 65 / NEMA Type 4X housings - your first choice for industrial housings with IP 65 protection.

## General ordering data

Type	HDC 32B TSLU 1M32G	Version
Order No.	<a href="#">1788420000</a>	HDC enclosures, Installation size: 10, Protection degree: IP65, in
GTIN (EAN)	4032248205950	plugged condition, Cable entry from side, Plug housing, End-locking
Qty.	1 ST	clamp, lower side, Standard, Size of cable entries: M 32

## HDC 32B SDLU 2M32G

**Weidmüller Interface GmbH & Co. KG**  
 Klingenbergstraße 26  
 D-32758 Detmold  
 Germany

[www.weidmueller.com](http://www.weidmueller.com)

## Accessories

Type	HDC 32B TSLU 1PG29G	Version
Order No.	<a href="#">1667120000</a>	HDC enclosures, Installation size: 10, Protection degree: IP65, in
GTIN (EAN)	4008190424329	plugged condition, Cable entry from side, Plug housing, End-locking
Qty.	1 ST	clamp, lower side, Standard, Size of cable entries: PG 29