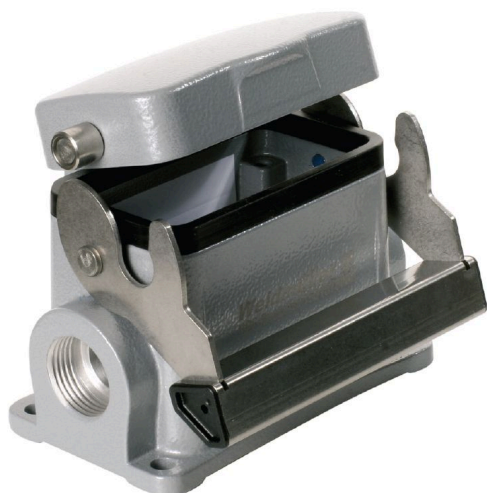


**HDC 10B SDLU 2M20G****Weidmüller Interface GmbH & Co. KG**

Klingenbergstraße 26

D-32758 Detmold

Germany

[www.weidmueller.com](http://www.weidmueller.com)

The special die-cast alloy and the multi-layered surface sealing provide complete protection for the HDC housings.

The cleverly designed interlock system is manufactured from stainless steel. This guarantees a long lifespan with high resistance to corrosion and impact.

The housing interlock system provides integrated safety. Our unique, patented spring system provides the housing interlock with a secure grip and prevents accidental opening.

The laser marking allows for easy and quick identification. Each housing is permanently labelled with a laser marking so that each product can be quickly designated and positioned.

Weidmüller RockStar® IP 65 / NEMA Type 4X housings - your first choice for industrial housings with IP 65 protection.

**General ordering data**

|            |   |
|------------|---|
| Version    | HDC enclosures, Installation size: 4, Protection degree: IP65, in plugged condition, Base housing, End-locking clamp, lower side, Standard, with cover, Size of cable entries: M 20 |
| Order No.  | <a href="#">1787700000</a>  |
| Type       | HDC 10B SDLU 2M20G  |
| GTIN (EAN) | 4032248205042   |
| Qty.       | 1 items   |

## HDC 10B SDLU 2M20G

Weidmüller Interface GmbH &amp; Co. KG

Klingenbergstraße 26

D-32758 Detmold

Germany

www.weidmueller.com

## Technical data

## Approvals

Approvals



ROHS Conform

UL File Number Search [UL Website](#)

Certificate No. (cURus) E92202

## Dimensions and weights

|                             |          |                            |             |
|-----------------------------|----------|----------------------------|-------------|
| Height                      | 79.5 mm  | Height (inches)            | 3.1299 inch |
| Width                       | 98.9 mm  | Width (inches)             | 3.8937 inch |
| Mounting dimension - height | 40 mm    | Mounting dimension - width | 82 mm       |
| Net weight                  | 309.76 g |                            |             |

## Temperatures

Limit temperature -40 °C ... 125 °C

## Environmental Product Compliance

|                        |  |
|------------------------|--|
| RoHS Compliance Status | Compliant without exemption                    |
| REACH SVHC             | Potassium perfluorobutane sulfonate 29420-49-3 |
| SCIP                   | e98b2b24-ba23-41bf-8d19-0dda3647412f           |

|                     |                     |                         |
|---------------------|---------------------|-------------------------|
| Chemical resistance | Substance           | Acetone                 |
|                     | Chemical resistance | Conditionally resistant |
|                     | Substance           | Drilling oil            |
|                     | Chemical resistance | Resistant               |
|                     | Substance           | Diesel                  |
|                     | Chemical resistance | Resistant               |
|                     | Substance           | Ethyl alcohol           |
|                     | Chemical resistance | Resistant               |
|                     | Substance           | Transmission oil        |
|                     | Chemical resistance | Resistant               |
|                     | Substance           | Hydraulic oil           |
|                     | Chemical resistance | Resistant               |
|                     | Substance           | Coolant                 |
|                     | Chemical resistance | Resistant               |
|                     | Substance           | Petroleum benzine       |
|                     | Chemical resistance | Resistant               |
|                     | Substance           | Sweat                   |
|                     | Chemical resistance | Resistant               |
|                     | Substance           | Premium gasoline        |
|                     | Chemical resistance | Conditionally resistant |
|                     | Substance           | Water                   |
|                     | Chemical resistance | Resistant               |
|                     | Substance           | UV                      |
|                     | Chemical resistance | Unstable                |
|                     | Substance           | Ozone                   |
|                     | Chemical resistance | Unstable                |

## Dimensions

|                      |       |               |           |
|----------------------|-------|---------------|-----------|
| Hole pitch length A2 | 82 mm | Cable entry   | w. thread |
| Width housing C      | 43 mm | Width base C1 | 53.5 mm   |

## HDC 10B SDLU 2M20G

Weidmüller Interface GmbH &amp; Co. KG

Klingenbergstraße 26

D-32758 Detmold

Germany

www.weidmueller.com

## Technical data

|                      |       |                     |       |
|----------------------|-------|---------------------|-------|
| Total length housing | 73 mm | Height of housing B | 57 mm |
| Height of base B1    | 5 mm  |                     |       |

## General data

|                       |                            |                             |  |
|-----------------------|----------------------------|-----------------------------|--|
| Housing main material | diecast aluminium          | Surface finish              | Powder coating                             |
| Protection degree     | IP65, in plugged condition | Protection class note       | Protection class with secured cover: IP 65 |
| EMC housings          | No                         | Material of locking element | Stainless steel, rust-proof                |

## Version

|                                |                   |                              |                               |
|--------------------------------|-------------------|------------------------------|-------------------------------|
| Size of cable entries          | M 20              | Top part/bottom part/lid     | lower part                    |
| Cover                          | with cover        | Number of cable entry on top | 0                             |
| Number of cable entry sideways | 2                 | Design of cover              | with cover                    |
| Design of housing              | Base housing      | Design of locking system     | End-locking clamp, lower side |
| Design                         | Standard          | Installation size            | 4                             |
| Cable entry                    | w. thread         | Type                         | Base housing                  |
| Clamp version                  | End-locking clamp | Sealing                      | NBR                           |
| Internal thread                | M 20              | Colour (RAL)                 | RAL 7035                      |
| BG                             | 4                 | Suitable for ModuPlug®       | No                            |

## Classifications

|             |             |             |             |
|-------------|-------------|-------------|-------------|
| ETIM 8.0    | EC000437    | ETIM 9.0    | EC000437    |
| ETIM 10.0   | EC000437    | ECLASS 14.0 | 27-44-02-02 |
| ECLASS 15.0 | 27-44-02-02 |             |             |

## HDC 10B SDLU 2M20G

**Weidmüller Interface GmbH & Co. KG**  
Klingenbergstraße 26  
D-32758 Detmold  
Germany

[www.weidmueller.com](http://www.weidmueller.com)

## Drawings

