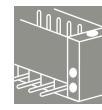
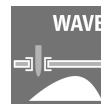
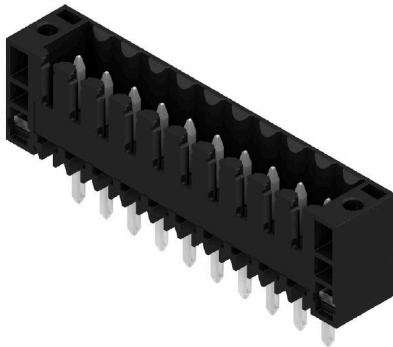


**SL 3.5/10/180F6.25SN SW****Weidmüller Interface GmbH & Co. KG**

Klingenbergstraße 26

D-32758 Detmold

Germany

[www.weidmueller.com](http://www.weidmueller.com)**Product image**

Pin headers for wave soldering in 3.50 mm pitch

- Plugging direction is parallel (90°), straight 180° or angled (135°) to the PCB
- Housing variant: screw flange (F)
- Packed in a cardboard box (BX)
- Pin header can be coded

**General ordering data**

|              |   |
|--------------|---|
| Version      | PCB plug-in connector, male header, Flange, THT solder connection, 3.50 mm, Number of poles: 10, 180°, Solder pin length (l): 6.25 mm, tinned, black, Box |
| Order No.    | <a href="#">1785180000</a>  |
| Type         | SL 3.5/10/180F6.25SN SW   |
| GTIN (EAN)   | 4032248196838   |
| Qty.         | 50 items  |
| Product data | IEC: 320 V / 17 A<br>UL: 300 V / 10 A   |
| Packaging    | Box   |

## SL 3.5/10/180F6.25SN SW

Weidmüller Interface GmbH &amp; Co. KG

Klingenbergstraße 26

D-32758 Detmold

Germany

www.weidmueller.com

## Technical data

## Approvals

|      |         |
|------|---------|
| ROHS | Conform |
|------|---------|

## Dimensions and weights

|                          |             |                 |             |
|--------------------------|-------------|-----------------|-------------|
| Depth                    | 7.5 mm      | Depth (inches)  | 0.2953 inch |
| Height                   | 17.35 mm    | Height (inches) | 0.6831 inch |
| Height of lowest version | 11.1 mm     | Width           | 42 mm       |
| Width (inches)           | 1.6535 inch | Net weight      | 3.19 g      |

## Environmental Product Compliance

|                          |                             |                  |  |
|--------------------------|-----------------------------|------------------|--|
| RoHS Compliance Status   | Compliant without exemption |                  |  |
| REACH SVHC               | No SVHC above 0.1 wt%       |                  |  |
| Product Carbon Footprint | Cradle to gate              | 0,021 kg CO2 eq. |  |

## System specifications

|  |  |                     |             |  |
|--|--|---------------------|-------------|--|
| Product family                               | OMNIMATE Signal - series BL/SL 3.50              |                     |             |  |
| Type of connection                           | Board connection                                 |                     |             |  |
| Mounting onto the PCB                        | THT solder connection                            |                     |             |  |
| Pitch in mm (P)                              | 3.50 mm  |                     |             |  |
| Pitch in inches (P)                          | 0.138 "  |                     |             |  |
| Outgoing elbow                               | 180°   |                     |             |  |
| Number of poles                              | 10   |                     |             |  |
| Number of solder pins per pole               | 1  |                     |             |  |
| Solder pin length (l)                        | 6.25 mm  |                     |             |  |
| Solder pin length tolerance                  | +0.1 / -0.3 mm                                   |                     |             |  |
| Solder pin dimensions                        | d = 1.2 mm, Octagonal                            |                     |             |  |
| Solder pin dimensions = d tolerance          | 0 / -0,03 mm                                     |                     |             |  |
| Solder eyelet hole diameter (D)              | 1.4 mm   |                     |             |  |
| Solder eyelet hole diameter tolerance (D)    | + 0,1 mm   |                     |             |  |
| L1 in mm                                     | 31.50 mm   |                     |             |  |
| L1 in inches                                 | 1.240 "  |                     |             |  |
| Number of rows                               | 1  |                     |             |  |
| Pin series quantity                          | 1  |                     |             |  |
| Touch-safe protection acc. to DIN VDE 57 106 | finger-safe plugged/ back-of-hand-safe unplugged |                     |             |  |
| Touch-safe protection acc. to DIN VDE 0470   | IP20 plugged/ IP10 unplugged                     |                     |             |  |
| Volume resistance                            | ≤5 mΩ  |                     |             |  |
| Can be coded                                 | Yes  |                     |             |  |
| Plugging force/pole, max.                    | 10 N   |                     |             |  |
| Pulling force/pole, max.                     | 10 N   |                     |             |  |
| Tightening torque                            | Torque type                                      | Mounting screw, PCB |             |  |
|  | Usage information                                | Tightening torque   | min.        | 0.1 Nm                                 |
|  |  |                     | max.        | 0.15 Nm                                |
|  |  | Recommended screw   | Part number | <a href="#">PTSC KA 2.2X4.5 WN1412</a> |

## Material data

|                                  |          |                           |          |
|----------------------------------|----------|---------------------------|----------|
| Insulating material              | PBT      | Colour                    | black    |
| Colour chart (similar)           | RAL 9011 | Insulating material group | IIIa     |
| Comparative Tracking Index (CTI) | ≥ 200    | Moisture Level (MSL)      |          |
| UL 94 flammability rating        | V-0      | Contact material          | Cu-alloy |

## SL 3.5/10/180F6.25SN SW

Weidmüller Interface GmbH &amp; Co. KG

Klingenbergstraße 26  
D-32758 Detmold  
Germany

www.weidmueller.com

## Technical data

|                                       |                           |                                       |                    |
|---------------------------------------|---------------------------|---------------------------------------|--------------------|
| Contact surface                       | tinned                    | Layer structure of solder connection  | 5...7 µm Sn glossy |
| Layer structure of plug contact       | 5...7 undefined Sn glossy | Storage temperature, min.             | -40 °C             |
| Storage temperature, max.             | 70 °C                     | Operating temperature, min.           | -50 °C             |
| Operating temperature, max.           | 100 °C                    | Temperature range, installation, min. | -30 °C             |
| Temperature range, installation, max. | 100 °C                    |                                       |                    |

## Rated data acc. to IEC

|   |                        |   |                    |
|---|------------------------|---|--------------------|
| tested acc. to standard   | IEC 60664-1, IEC 61984 | Rated current, min. number of poles (Tu=20°C)                         | 17 A               |
| Rated current, max. number of poles (Tu=20°C)                             | 12 A                   | Rated current, min. number of poles (Tu=40°C)                         | 14.5 A             |
| Rated current, max. number of poles (Tu=40°C)                             | 10 A                   | Rated voltage for surge voltage class / pollution degree II/2         | 320 V              |
| Rated voltage for surge voltage class / pollution degree III/2            | 160 V                  | Rated voltage for surge voltage class / pollution degree III/3        | 160 V              |
| Rated impulse voltage for surge voltage class/ pollution degree II/2      | 2.5 kV                 | Rated impulse voltage for surge voltage class/ pollution degree III/2 | 2.5 kV             |
| Rated impulse voltage for surge voltage class/ contamination degree III/3 | 2.5 kV                 | Short-time withstand current resistance                               | 3 x 1 s with 100 A |

## Rated data acc. to CSA

|                                   |       |                                   |       |
|-----------------------------------|-------|-----------------------------------|-------|
| Rated voltage (Use group B / CSA) | 300 V | Rated voltage (Use group D / CSA) | 300 V |
| Rated current (Use group B / CSA) | 10 A  | Rated current (Use group D / CSA) | 10 A  |

## Rated data acc. to UL 1059

|                                       |       |                                       |       |
|---------------------------------------|-------|---------------------------------------|-------|
| Rated voltage (Use group B / UL 1059) | 300 V | Rated voltage (Use group D / UL 1059) | 300 V |
| Rated current (Use group B / UL 1059) | 10 A  | Rated current (Use group D / UL 1059) | 10 A  |

## Packing

|           |          |            |           |
|-----------|----------|------------|-----------|
| Packaging | Box      | VPE length | 154.00 mm |
| VPE width | 57.00 mm | VPE height | 64.00 mm  |

## Important note

|                |   |
|----------------|---|
| IPC conformity | Conformity: The products are developed, manufactured and delivered according international recognized standards and norms and comply with the assured properties in the data sheet resp. fulfill decorative properties in accordance with IPC-A-610 "Class 2". Further claims on the products can be evaluated on request.  |
| Notes          | <ul style="list-style-type: none"> <li>• Additional variants on request</li> <li>• Gold-plated contact surfaces on request</li> <li>• Rated current related to rated cross-section &amp; min. No. of poles.</li> <li>• P on drawing = pitch</li> <li>• Rated data refer only to the component itself. Clearance and creepage distances to other components are to be designed in accordance with the relevant application standards.</li> <li>• For additional mechanical support for male connectors with screw flange (...F), we recommend an additional cable gland with fastening screws (sheet metal screw ISO 1481-ST 2.2x4.5 C or ISO 7049-ST 2.2x4.5 C – see Accessories). Cable gland only permitted before soldering.</li> <li>• In accordance with IEC 61984, OMNIMATE-connectors are connectors without breaking capacity (COC). During designated use, connectors are not allowed to be engaged or disengaged when live or under load</li> <li>• Long term storage of the product with average temperature of 50 °C and maximum humidity 70%, 36 months</li> </ul> |

## Classifications

|           |          |             |             |
|-----------|----------|-------------|-------------|
| ETIM 8.0  | EC002637 | ETIM 9.0    | EC002637    |
| ETIM 10.0 | EC002637 | ECLASS 14.0 | 27-46-02-01 |

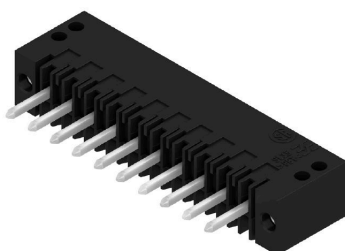
## Technical data

ECLASS 15.0

27-46-02-01

## Drawings

### Product image



### Dimensional drawing

