

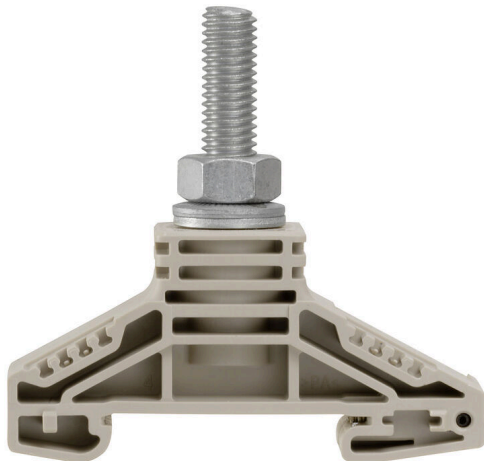
**WF 8****Weidmüller Interface GmbH & Co. KG**

Klingenbergstraße 26

D-32758 Detmold

Germany

www.weidmueller.com

**Product image**

To feed through power, signal, and data is the classical requirement in electrical engineering and panel building. The insulating material, the connection system and the design of the terminal blocks are the differentiating features. A feed-through terminal block is suitable for joining and/or connecting one or more conductors. They could have one or more connection levels that are on the same potential or insulated against one another.

**General ordering data**

|            |   |
|------------|---|
| Version    | Bolt-type screw terminals, Feed-through terminal, Rated cross-section: 50 mm <sup>2</sup> , Threaded stud connection, PA 66/6 |
| Order No.  | <a href="#">1780860000</a>  |
| Type       | WF 8  |
| GTIN (EAN) | 40322482 19346  |
| Qty.       | 25 items  |

## WF 8

Weidmüller Interface GmbH &amp; Co. KG

Klingenbergstraße 26

D-32758 Detmold

Germany

www.weidmueller.com

## Technical data

## Approvals

Approvals



ROHS Conform

UL File Number Search [UL Website](#)

Certificate No. (UR) E60693

## Dimensions and weights

|            |         |                 |             |
|------------|---------|-----------------|-------------|
| Depth      | 63.5 mm | Depth (inches)  | 2.5 inch    |
| Height     | 67 mm   | Height (inches) | 2.6378 inch |
| Width      | 22.8 mm | Width (inches)  | 0.8976 inch |
| Net weight | 46.17 g |                 |             |

## Temperatures

|                                  |        |                                  |        |
|----------------------------------|--------|----------------------------------|--------|
| Continuous operating temp., min. | -60 °C | Continuous operating temp., max. | 130 °C |
|----------------------------------|--------|----------------------------------|--------|

## Environmental Product Compliance

RoHS Compliance Status Compliant without exemption

REACH SVHC No SVHC above 0.1 wt%

## Material data

|                |            |                           |         |
|----------------|------------|---------------------------|---------|
| Basic material | Wemid      | Insulating material       | PA 66/6 |
| Colour         | dark beige | UL 94 flammability rating | V-0     |

## System specifications

|                                   |    |                                     |       |
|-----------------------------------|----|-------------------------------------|-------|
| End cover plate required          | No | Number of potentials                | 1     |
| Number of levels                  | 1  | Number of clamping points per level | 1     |
| Levels cross-connected internally | No | Mounting rail                       | TS 35 |

## Additional technical data

Explosion-tested version Yes

## CSA rating data

|                               |        |                       |                |
|-------------------------------|--------|-----------------------|----------------|
| Wire cross section max. (CSA) | 0 AWG  | Voltage size C (CSA)  | 1000 V         |
| Current size C (CSA)          | 200 A  | Certificate No. (CSA) | 200039-1244019 |
| Wire cross section min. (CSA) | 14 AWG |                       |                |

## Conductors for clamping (rated connection)

|   |                          |                         |                     |
|---|--------------------------|-------------------------|---------------------|
| Wire connection cross section AWG, max. | AWG 0                    | Connection direction    | on side             |
| Tightening torque, max.                 | 12 Nm                    | Tightening torque, min. | 6 Nm                |
| Type of connection                      | Threaded stud connection | Number of connections   | 1                   |
| Clamping range, max.                    | 50 mm <sup>2</sup>       | Clamping range, min.    | 2.5 mm <sup>2</sup> |

## WF 8

**Weidmüller Interface GmbH & Co. KG**

Klingenbergstraße 26  
D-32758 Detmold  
Germany

[www.weidmueller.com](http://www.weidmueller.com)

## Technical data

|   |                     |   |                     |
|---|---------------------|---|---------------------|
| Wire connection cross section AWG, min.   | AWG 12              | Wire connection cross-section, finely stranded with wire-end ferrules DIN 46228/4, min. | 2.5 mm <sup>2</sup> |
| Wire connection cross-section, finely stranded with wire-end ferrules DIN 46228/1, min. | 2.5 mm <sup>2</sup> | Wire connection cross section, finely stranded, max.                                    | 50 mm <sup>2</sup>  |
| Wire connection cross section, finely stranded, min.                                    | 2.5 mm <sup>2</sup> | Connection cross-section, stranded, max.  | 50 mm <sup>2</sup>  |
| Connection cross-section, stranded, min.  | 2.5 mm <sup>2</sup> | Wire connection cross-section, solid core, max.   | 50 mm <sup>2</sup>  |
| Wire connection cross-section, solid core, min.   | 2.5 mm <sup>2</sup> | Connection cross-section, finely stranded, min.   | 2.5 mm <sup>2</sup> |

## General

|   |               |   |        |
|---|---------------|---|--------|
| Wire connection cross section AWG, max. | AWG 0         | Wire connection cross section AWG, min. | AWG 12 |
| Standards                               | IEC 60947-7-1 | Mounting rail                           | TS 35  |

## Rating data

|                          |                    |                 |               |
|--------------------------|--------------------|-----------------|---------------|
| Rated cross-section      | 50 mm <sup>2</sup> | Rated voltage   | 1000 V        |
| Rated DC voltage         | 1000 V             | Nominal current | 150 A         |
| Current at maximum wires | 150 A              | Standards       | IEC 60947-7-1 |

## UL rating data

|   |        |   |        |
|---|--------|---|--------|
| Conductor size Factory wiring max. (UR) | 0 AWG  | Current size C (UR)                     | 150 A  |
| Voltage size C (UR)                     | 1000 V | Conductor size Factory wiring min. (UR) | 14 AWG |
| Certificate No. (UR)                    | E60693 |   |        |

## Classifications

|             |             |             |             |
|-------------|-------------|-------------|-------------|
| ETIM 8.0    | EC000897    | ETIM 9.0    | EC000897    |
| ETIM 10.0   | EC000897    | ECLASS 14.0 | 27-25-01-01 |
| ECLASS 15.0 | 27-25-01-01 |             |             |

Drawings



## WF 8

**Weidmüller Interface GmbH & Co. KG**  
 Klingenbergstraße 26  
 D-32758 Detmold  
 Germany

www.weidmueller.com

## Accessories

## Cross-connections



The distribution or multiplication of a potential to adjoining terminal blocks is realized via a cross-connection. Additional wiring effort can be easily avoided. Even if the poles are broken out, contact reliability in the terminal blocks is still ensured. Our portfolio offers pluggable and screwable cross-connection systems for modular terminal blocks.

## General ordering data

|            |                            |  |
|------------|----------------------------|--|
| Type       | WQL 2 WF8                  | Version  |
| Order No.  | <a href="#">1780990000</a> | Bolt-type screw terminals, Cross-connector, Number of poles: 2 |
| GTIN (EAN) | 4032248219414              |  |
| Qty.       | 5 ST                       |  |
| Type       | WQL 3 WF8                  | Version  |
| Order No.  | <a href="#">1781000000</a> | Bolt-type screw terminals, Cross-connector, Number of poles: 3 |
| GTIN (EAN) | 4032248241200              |  |
| Qty.       | 5 ST                       |  |

## Additional connection



The additional connection enables a separate voltage tap. This can be used, for example, for the emergency power supply before the main switch or simply as an additional connection within the application.

## General ordering data

|            |                            |                                 |
|------------|----------------------------|---------------------------------|
| Type       | WZAF 70                    | Version                         |
| Order No.  | <a href="#">1066200000</a> | Auxiliary connection (terminal) |
| GTIN (EAN) | 4008190169831              |                                 |
| Qty.       | 10 ST                      |                                 |

## End plates and partition plates



Partition plates and end plates are essential accessories for terminal blocks. Partition plates provide optical and electrical separation of different potentials and functional groups, increasing safety and ensuring a clear structure inside the control cabinet. End plates close the terminal block row on the sides, protect against contact with live parts, and ensure a clean, stable finish. Both components are precisely matched to the respective Weidmüller terminal block series, contributing to safe, compliant, and professional wiring.

## WF 8

**Weidmüller Interface GmbH & Co. KG**  
 Klingenbergstraße 26  
 D-32758 Detmold  
 Germany

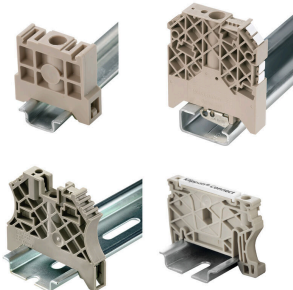
www.weidmueller.com

## Accessories

## General ordering data

|            |                            |  |
|------------|----------------------------|--|
| Type       | WTW WF8                    | Version  |
| Order No.  | <a href="#">1780900000</a> | Bolt-type screw terminals, Partition plate, dark beige, 3 mm |
| GTIN (EAN) | 4032248219384              |  |
| Qty.       | 20 ST                      |  |
| Type       | WTW WF8 2300               | Version  |
| Order No.  | <a href="#">1780910000</a> | Bolt-type screw terminals, Partition plate, grey, 2 mm       |
| GTIN (EAN) | 4032248241132              |  |
| Qty.       | 20 ST                      |  |

## End bracket



Weidmüller's range of products includes end brackets that guarantee a permanent, reliable mounting on the terminal rail and prevent sliding. Versions with and without screws are available. The end brackets include marking options, also for group markers, and also a test plug holder.

## General ordering data

|            |                            |  |
|------------|----------------------------|--|
| Type       | WEW 35/2                   | Version  |
| Order No.  | <a href="#">1061200000</a> | End bracket, dark beige, TS 35, HB, Wemid, Width: 8 mm, 100 °C |
| GTIN (EAN) | 4008190030230              |  |
| Qty.       | 50 ST                      |  |

## Protection against contact



Our systems for touch protection ensure greater safety in your cabinet. They provide protection against electric shock caused by accidental contact with live parts due to operation or faults.

## General ordering data

|            |                            |  |
|------------|----------------------------|--|
| Type       | ADP WF6/WF8                | Version  |
| Order No.  | <a href="#">1780930000</a> | Bolt-type screw terminals, Cover profile, Transparent, 1000 mm |
| GTIN (EAN) | 4032248241248              |  |
| Qty.       | 1 M                        |  |
| Type       | HA ADP WF6/WF10            | Version  |
| Order No.  | <a href="#">1781050000</a> | Bolt-type screw terminals, Cover profile, dark beige, 2.2 mm   |
| GTIN (EAN) | 4032248241231              |  |
| Qty.       | 10 ST                      |  |

## WF 8

**Weidmüller Interface GmbH & Co. KG**  
 Klingenbergstraße 26  
 D-32758 Detmold  
 Germany

www.weidmueller.com

## Accessories

### End plates and partition plates

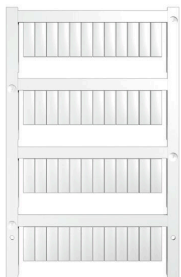


Partition plates and end plates are essential accessories for terminal blocks. Partition plates provide optical and electrical separation of different potentials and functional groups, increasing safety and ensuring a clear structure inside the control cabinet. End plates close the terminal block row on the sides, protect against contact with live parts, and ensure a clean, stable finish. Both components are precisely matched to the respective Weidmüller terminal block series, contributing to safe, compliant, and professional wiring.

#### General ordering data

|            |                            |  |
|------------|----------------------------|--|
| Type       | WTW WF6-WF12               | Version  |
| Order No.  | <a href="#">1781240000</a> | Bolt-type screw terminals, Partition plate, dark beige, 2.5 mm |
| GTIN (EAN) | 4032248241156              |  |
| Qty.       | 20 ST                      |  |

### Blank



WS markers are the perfect match for the W-series connectors. Thanks to their system compatibility, the WS tags can also be used with the I-series and the Z-series. The large marking surfaces do not only permit long character strings but also multi-line text. WS markers are ideal for labels with long, customised character strings. Thanks to the proven MultiCard format, printing with PrintJet CONNECT oder/or Plotter is possible.

- Can be fitted in strips or individually
- Markers in proven MultiCard format

For custom printing: Please send us a file of our labeling software M-Print PRO or M-Print PRO Online (without installation) for your labeling specifications.

#### General ordering data

|            |                            |  |
|------------|----------------------------|--|
| Type       | WS 15/5 MC NE WS           | Version  |
| Order No.  | <a href="#">1609880000</a> | WS, Terminal marker, 15 x 5 mm, Pitch in mm (P): 5.00 Weidmueller, |
| GTIN (EAN) | 4008190203504              | Allen-Bradley, white   |
| Qty.       | 480 ST                     |  |
| Type       | DEK 5/6 MC NE WS           | Version  |
| Order No.  | <a href="#">1609820000</a> | Dekafix, Terminal marker, 5 x 6 mm, Pitch in mm (P): 6.00          |
| GTIN (EAN) | 4008190203436              | Weidmueller, white   |
| Qty.       | 1000 ST                    |  |

## WF 8

Weidmüller Interface GmbH &amp; Co. KG

Klingenbergstraße 26

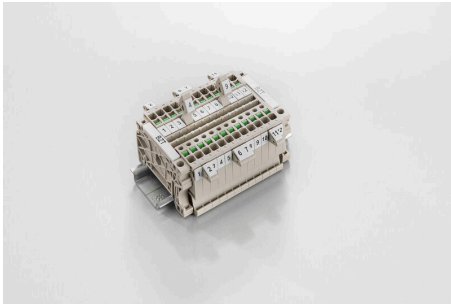
D-32758 Detmold

Germany

www.weidmueller.com

## Accessories

## Marker holder



The marker holder offer the possibility of additional mounting of standard markers with a pitch of 5 or 5.1 mm. The angled holders can be optionally snapped together and could be mounted in all standard marking channels of the Klippon® Connect modular terminal blocks. Fitting marker types could be found under the respective accessories of the designation marking holder.

## General ordering data

|            |                            |                            |  |
|------------|----------------------------|----------------------------|--|
| Type       | BZT 1 WS 10/5              | Version                    |  |
| Order No.  | <a href="#">1805490000</a> | Accessories, Marker holder |  |
| GTIN (EAN) | 4032248270231              |                            |  |
| Qty.       | 100 ST                     |                            |  |
| Type       | BZT 1 ZA WS 10/5           | Version                    |  |
| Order No.  | <a href="#">1805520000</a> | Accessories, Marker holder |  |
| GTIN (EAN) | 4032248270248              |                            |  |
| Qty.       | 100 ST                     |                            |  |

## DEK 5/6



## WS/ DEK

MultiMark terminal markers use an innovative composite material made from two components. The hard base contour of the marker snaps securely into the connector. The elastic surface finish makes the marker easy to mount. This specially punched material enables the strips to be stretched to accommodate the slight variations in spacing that tend to add up, especially with long terminal blocks. Another advantage: the excellent printability of the surface material guarantees durable and wear-resistant labelling. A print resolution of 300 dpi also produces a very legible script.

## Your benefits with MultiMark

- Firm hold and durable printing
- Continuous strips save installation time
- Easy mounting thanks to an innovative composite material
- Large label field for optimal legibility
- High flexibility thanks to manufacturer independence

## General ordering data

|            |                            |  |  |
|------------|----------------------------|--|--|
| Type       | DEK 5/6 MM WS              | Version  |  |
| Order No.  | <a href="#">2007120000</a> | Dekafix, Terminal marker, 5 x 6 mm, Weidmueller, white |  |
| GTIN (EAN) | 4050118392104              |  |  |
| Qty.       | 600 ST                     |  |  |

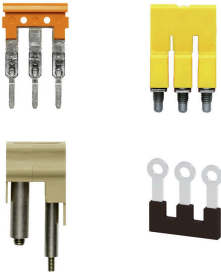
## WF 8

**Weidmüller Interface GmbH & Co. KG**  
 Klingenbergstraße 26  
 D-32758 Detmold  
 Germany

www.weidmueller.com

## Accessories

### Cross-connections



The distribution or multiplication of a potential to adjoining terminal blocks is realized via a cross-connection. Additional wiring effort can be easily avoided. Even if the poles are broken out, contact reliability in the terminal blocks is still ensured. Our portfolio offers pluggable and screwable cross-connection systems for modular terminal blocks.

### General ordering data

|            |                            |   |  |
|------------|----------------------------|---|--|
| Type       | WQL 4 WF8-6/3              | Version   |  |
| Order No.  | <a href="#">1904960000</a> | Bolt-type screw terminals, Cross-connector, Cross-connector, Number |  |
| GTIN (EAN) | 4032248756780              | of poles: 4   |  |
| Qty.       | 5 ST                       |   |  |

### 50 mm<sup>2</sup>



The use of insulated connectors guarantees users consistent electrical connection quality in the long term.

- Wide range of insulated and non-insulated cable lugs and connectors
- Tubular cable lugs according to current market standards (Euroseries)
- Compression cable lugs acc. to DIN 46235
- Sheet metal cable lugs acc. to DIN 46234
- Insulated ring cable lugs to DIN 46237
- Insulated pin cable lugs to DIN 46231

### General ordering data

|            |                            |   |  |
|------------|----------------------------|---|--|
| Type       | KP-M8/-50                  | Version   |  |
| Order No.  | <a href="#">1498070000</a> | cable lug, terminal end,50 mm <sup>2</sup>  |  |
| GTIN (EAN) | 4050118307566              |   |  |
| Qty.       | 100 ST                     |   |  |
| Type       | KQN-M8/-50                 | Version   |  |
| Order No.  | <a href="#">1493150000</a> | cable lug, terminal end,50 mm <sup>2</sup>  |  |
| GTIN (EAN) | 4050118302868              |   |  |
| Qty.       | 50 ST                      |   |  |
| Type       | KRN-M8/-50                 | Version   |  |
| Order No.  | <a href="#">1496600000</a> | cable lug, terminal end,50 mm <sup>2</sup> ,50 mm <sup>2</sup> - 50 mm <sup>2</sup> |  |
| GTIN (EAN) | 4050118306149              |   |  |
| Qty.       | 100 ST                     |   |  |
| Type       | KRN-M8/-50 S               | Version   |  |
| Order No.  | <a href="#">1494830000</a> | cable lug, terminal end,50 mm <sup>2</sup> ,50 mm <sup>2</sup> - 50 mm <sup>2</sup> |  |
| GTIN (EAN) | 4050118304404              |   |  |
| Qty.       | 25 ST                      |   |  |