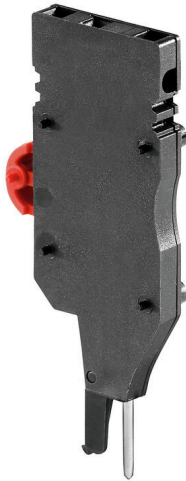


**ZTA 7/ZA****Weidmüller Interface GmbH & Co. KG**Klingenbergstraße 26  
D-32758 Detmold  
Germany

www.weidmueller.com

**Product image**

Test adapters and test plugs are used for the electrical connection between terminal blocks and the test equipment. In this way, an electrical contact can be established in the wired state and measurements can be done easily.

**General ordering data**

Version	Accessories, Test adapter, 9 A
Order No.	<a href="#">1780670000</a>
Type	ZTA 7/ZA
GTIN (EAN)	4032248180202
Qty.	25 items
Delivery status	Discontinued
Available until	2025-12-31T00:00:00+01:00

## ZTA 7/ZA

Weidmüller Interface GmbH &amp; Co. KG

Klingenbergstraße 26

D-32758 Detmold

Germany

www.weidmueller.com

## Technical data

## Approvals

ROHS	Conform
------	---------

## Dimensions and weights

Depth	73.5 mm	Depth (inches)	2.8937 inch
Height	31.5 mm	Height (inches)	1.2402 inch
Width	8.1 mm	Width (inches)	0.3189 inch
Net weight	7.76 g		

## Temperatures

Storage temperature	-25 °C...55 °C	Ambient temperature	-50 °C...55 °C
Continuous operating temp., min.	-50 °C	Continuous operating temp., max.	100 °C

## Environmental Product Compliance

RoHS Compliance Status	Compliant with exemption
RoHS Exemption (if applicable/known)	6c
REACH SVHC	Lead 7439-92-1
SCIP	e1c310ef-6b67-4efa-80a6-d307472f4de9

## Material data

Basic material	Polyamide 66	Colour	black
UL 94 flammability rating	V-2		

## System specifications

Version	For the terminals	Number of potentials	1
Number of levels	1	Number of clamping points per level	1

## Additional technical data

With snap-in pegs	Yes	Installation advice	Direct mounting
-------------------	-----	---------------------	-----------------

## Conductors for clamping (rated connection)

Connection direction	on side	Tightening torque, max.	0.3 Nm
Tightening torque, min.	0.3 Nm	Stripping length	6 mm
Type of connection	Plug-in connection	Number of connections	1
Clamping range, max.	1.5 mm <sup>2</sup>	Clamping range, min.	0.5 mm <sup>2</sup>
Wire connection cross-section, finely stranded with wire-end ferrules DIN 46228/4, min.	0.5 mm <sup>2</sup>	Wire connection cross-section, finely stranded with wire-end ferrules DIN 46228/1, max.	1.5 mm <sup>2</sup>
Wire connection cross-section, finely stranded with wire-end ferrules DIN 46228/1, min.	0.5 mm <sup>2</sup>	Wire connection cross section, finely stranded, max.	1.5 mm <sup>2</sup>
Wire connection cross section, finely stranded, min.	0.5 mm <sup>2</sup>	Connection cross-section, stranded, max.	1.5 mm <sup>2</sup>
Connection cross-section, stranded, min.	0.5 mm <sup>2</sup>	Wire connection cross-section, solid core, max.	1.5 mm <sup>2</sup>
Wire connection cross-section, solid core, min.	0.5 mm <sup>2</sup>		

## ZTA 7/ZA

**Weidmüller Interface GmbH & Co. KG**  
 Klingenbergstraße 26  
 D-32758 Detmold  
 Germany

[www.weidmueller.com](http://www.weidmueller.com)

## Technical data

### Dimensions

Pitch in mm (P)	8.10 mm	Height with TS 35	73.5 mm
-----------------	---------	-------------------	---------

### General

Number of poles	1	Installation advice	Direct mounting
-----------------	---	---------------------	-----------------

### Rating data

Rated cross-section	1.5 mm <sup>2</sup>	Rated voltage	250 V
Rated DC voltage	250 V	Nominal current	9 A
Volume resistance according to IEC 60947-7-x	1.83 mΩ	Power loss in accordance with IEC 60947-7-x	0.56 W

### Classifications

ETIM 8.0	EC002555	ETIM 9.0	EC002555
ETIM 10.0	EC002555	ECLASS 14.0	27-25-03-04
ECLASS 15.0	27-25-03-04		