

## WS 12/6 MC NE BL

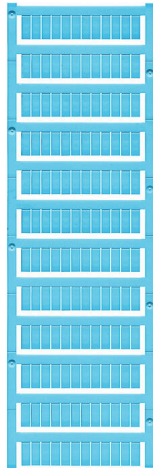
**Weidmüller Interface GmbH & Co. KG**

Klingenbergstraße 26

D-32758 Detmold

Germany

[www.weidmueller.com](http://www.weidmueller.com)



WS markers are the perfect match for the W-series connectors. Thanks to their system compatibility, the WS tags can also be used with the I-series and the Z-series. The large marking surfaces do not only permit long character strings but also multi-line text.

WS markers are ideal for labels with long, customised character strings. Thanks to the proven MultiCard format, printing with PrintJet CONNECT oder/or Plotter is possible.

- Can be fitted in strips or individually
- Markers in proven MultiCard format

For custom printing: Please send us a file of our labeling software M-Print PRO or M-Print PRO Online (without installation) for your labeling specifications.

### General ordering data

Version	WS, Terminal marker, 12 x 6 mm, Pitch in mm (P): 6.00 Weidmueller, Allen-Bradley, blue
Order No.	<a href="#">1773551693</a>
Type	WS 12/6 MC NE BL
GTIN (EAN)	4032248143269
Qty.	600 items

**Technical data**

**Approvals**

ROHS Conform

**Dimensions and weights**

Height	12 mm	Height (inches)	0.4724 inch
Width	6 mm	Width (inches)	0.2362 inch
Net weight	0.22 g		

**Temperatures**

Operating temperature range -40...100 °C

**Environmental Product Compliance**

RoHS Compliance Status	Compliant without exemption		
REACH SVHC	No SVHC above 0.1 wt%		
Product Carbon Footprint	Cradle to gate	0.001 kg CO2eq.	

**General data**

Material colour according to resistance code	6		
Width	6 mm		
UL 94 flammability rating	V-2		
Operating temperature range, max.	100 °C		
Operating temperature range, min.	-40 °C		
Colour	blue		
Halogen	No		
Basic material	Polyamide 66		
Printed characters	neutral		
Number of markers per packaging unit compatible printer	Form of supply	MultiCard	
	<a href="#">PRINTJET CONNECT, MCP BASIC 2, MCP PLUS 2</a>		
Number of markers per combination	1 MultiCard = Terminal marker		
Operating temperature range	-40...100 °C		
Application/manufacturer	Weidmueller, Allen-Bradley		

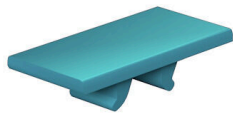
**Connector markers**

Pitch in mm (P) 6.00 mm

**Classifications**

ETIM 8.0	EC000761	ETIM 9.0	EC000761
ETIM 10.0	EC000761	ECLASS 14.0	27-28-11-01
ECLASS 15.0	27-28-11-01		

**Drawings**



**Drawing**

