

WS 10/5 MC NE BL

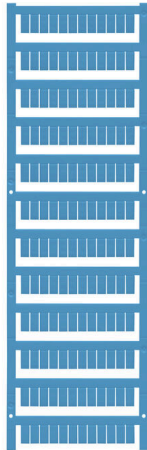
Weidmüller Interface GmbH & Co. KG

Klingenbergstraße 26

D-32758 Detmold

Germany

www.weidmueller.com



WS markers are the perfect match for the W-series connectors. Thanks to their system compatibility, the WS tags can also be used with the I-series and the Z-series. The large marking surfaces do not only permit long character strings but also multi-line text.

WS markers are ideal for labels with long, customised character strings. Thanks to the proven MultiCard format, printing with PrintJet CONNECT oder/or Plotter is possible.

- Can be fitted in strips or individually
- Markers in proven MultiCard format

For custom printing: Please send us a file of our labeling software M-Print PRO or M-Print PRO Online (without installation) for your labeling specifications.

General ordering data

Version	WS, Terminal marker, 10 x 5 mm, Pitch in mm (P): 5.00 Weidmueller, Allen-Bradley, blue
Order No.	1773531693
Type	WS 10/5 MC NE BL
GTIN (EAN)	4032248141814
Qty.	720 items

WS 10/5 MC NE BL

Weidmüller Interface GmbH & Co. KG
Klingenbergstraße 26
D-32758 Detmold
Germany

www.weidmueller.com

Technical data

Approvals

ROHS	Conform
------	---------

Dimensions and weights

Height	10 mm	Height (inches)	0.3937 inch
Width	5 mm	Width (inches)	0.1968 inch
Net weight	0.16 g		

Temperatures

Operating temperature range	-40...100 °C
-----------------------------	--------------

Environmental Product Compliance

RoHS Compliance Status	Compliant without exemption		
REACH SVHC	No SVHC above 0.1 wt%		
Product Carbon Footprint	Cradle to gate	0.001 kg CO2eq.	

General data

Material colour according to resistance code	6		
Width	5 mm		
UL 94 flammability rating	V-2		
Operating temperature range, max.	100 °C		
Operating temperature range, min.	-40 °C		
Colour	blue		
Halogen	No		
Basic material	Polyamide 66		
Colour of printing	black		
Printed characters	neutral		
Number of markers per packaging unit compatible printer	Form of supply	MultiCard	
	PRINTJET CONNECT , MCP BASIC 2 , MCP PLUS 2		
Number of markers per combination	1 MultiCard = Terminal marker		
Operating temperature range	-40...100 °C		
Application/manufacturer	Weidmueller, Allen-Bradley		

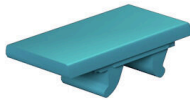
Connector markers

Pitch in mm (P)	5.00 mm
-----------------	---------

Classifications

ETIM 8.0	EC000761	ETIM 9.0	EC000761
ETIM 10.0	EC000761	ECLASS 14.0	27-28-11-01
ECLASS 15.0	27-28-11-01		

Drawings



Drawing

