

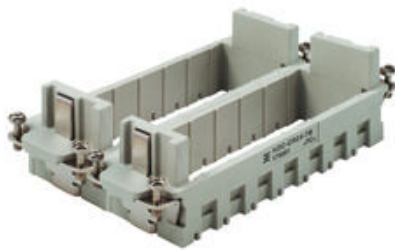
**HDC-CR24-7B-2 GR****Weidmüller Interface GmbH & Co. KG**

Klingenbergstraße 26

D-32758 Detmold

Germany

www.weidmueller.com



The frames of the modular ConCept system allow ConCept modules to be attached. These frames are designed for sizes 3, 4, 6 and 8. Thus they can be fitted into corresponding enclosures of these sizes.

The fitting capacity of the frames ranges from 2 modules up to 7 modules. This allows the user to put together a custom connector assembly. .

The basic version consists of sturdy, one-piece modules frames available to the user in either polycarbonate or die-cast zinc

Frames are only compatible with each other when they are made of the same material and identical size.

**General ordering data**

Version	Heavy-duty connectors, HDC insert, ConCept frame
Order No.	<a href="#">1758550000</a>
Type	HDC-CR24-7B-2 GR
GTIN (EAN)	4032248019779
Qty.	5 items

## HDC-CR24-7B-2 GR

**Weidmüller Interface GmbH & Co. KG**  
 Klingenbergstraße 26  
 D-32758 Detmold  
 Germany

www.weidmueller.com

## Technical data

### Approvals

Approvals



ROHS Conform

### Dimensions and weights

Depth	111 mm	Depth (inches)	4.3701 inch
Height	35 mm	Height (inches)	1.378 inch
Width	34 mm	Width (inches)	1.3386 inch
Net weight	39.95 g		

### Temperatures

Limit temperature -40 °C ... 125 °C

### Environmental Product Compliance

RoHS Compliance Status	Compliant without exemption
REACH SVHC	Potassium perfluorobutane sulfonate 29420-49-3
SCIP	2f94735a-9fba-4903-842f-4fb9aa902310

### ConCept Pneumatic module

UL 94 flammability rating V-0 Colour beige

### Dimensions

Width	34 mm	Total length base	111 mm
Height of socket	35 mm		

### General data

Number of poles	1	Tightening torque	0.5 Nm
Installation size	12	UL 94 flammability rating	V-0
Colour	beige	Tightening torque, max. PE connection	1.5 Nm
Type	Female	Tightening torque, min. PE connection	1.2 Nm
Basic material	Polycarbonate	Series	ConCept frame
Free from halogens	false	Low smoke acc. DIN EN 45545-2	Yes
BG	12		

### Connection data PE

Connection type PE Screw connection Tightening torque, max. PE connection 1.5 Nm  
 Tightening torque, min. PE connection 1.2 Nm

### Version

Wire connection cross section AWG, max.	AWG 14	Installation size	12
Basic material	Polycarbonate	BG	12

## Technical data

### Classifications

ETIM 8.0	EC002312	ETIM 9.0	EC002312
ETIM 10.0	EC002312	ECLASS 14.0	27-44-02-92
ECLASS 15.0	27-44-02-92		

## HDC-CR24-7B-2 GR

**Weidmüller Interface GmbH & Co. KG**  
 Klingenbergstraße 26  
 D-32758 Detmold  
 Germany

www.weidmueller.com

## Accessories

### Modul removal tool



Weidmüller offers a variety of crimping tools, no-contact tools, and fibre optic tools.

#### General ordering data

Type	HDC-DW-MOD	Version	
Order No.	<a href="#">1688200000</a>	Tool miscellaneous, Contact Removal Tool	
GTIN (EAN)	4008190857189		
Qty.	1 ST		

### Slotted screwdriver



VDE insulated slot-head screwdriver, SDI DIN 7437, ISO 2380/2, drive output acc. to DIN 5264, ISO 2380/1. SoftFinish grip

#### General ordering data

Type	SDIS 0.6X3.5X100	Version	
Order No.	<a href="#">9008390000</a>	Screwdriver, Screwdriver	
GTIN (EAN)	4032248056354		
Qty.	1 ST		
Type	SDS 0.6X3.5X100	Version	
Order No.	<a href="#">9008330000</a>	Screwdriver, Screwdriver	
GTIN (EAN)	4032248056286		
Qty.	1 ST		
Type	SDIS 0.8X4.0X100	Version	
Order No.	<a href="#">9008400000</a>	Screwdriver, Screwdriver	
GTIN (EAN)	4032248056361		
Qty.	1 ST		
Type	SDS 0.8X4.0X100	Version	
Order No.	<a href="#">9008340000</a>	Screwdriver, Screwdriver	
GTIN (EAN)	4032248056293		
Qty.	1 ST		

**HDC-CR24-7B-2 GR**

**Weidmüller Interface GmbH & Co. KG**  
Klingenbergstraße 26  
D-32758 Detmold  
Germany

[www.weidmueller.com](http://www.weidmueller.com)

**Accessories****Crosshead screwdriver Pozidriv**

VDE insulated crosshead screwdriver type Pozidriv SDIK PZ DIN 7438, ISO 8764/2-PZ, output to ISO 8764-PZ, SoftFinish grip

**General ordering data**

Type	SDIK PZ 1	Version	
Order No.	<a href="#">9008900000</a>	Screwdriver, Screwdriver	
GTIN (EAN)	4032248266685		
Qty.	1 ST		
Type	SDK PZ 1	Version	
Order No.	<a href="#">9008530000</a>	Screwdriver, Screwdriver	
GTIN (EAN)	4032248056521		
Qty.	1 ST		