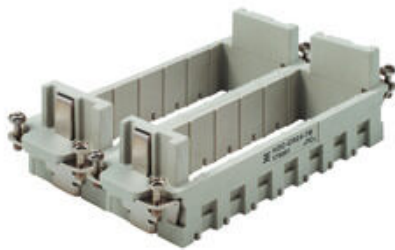


HDC-CR24-7B-2 GR

Weidmüller Interface GmbH & Co. KG
Klingenbergstraße 26
D-32758 Detmold
Germany

www.weidmueller.com



The frames of the modular ConCept system allow ConCept modules to be attached. These frames are designed for sizes 3, 4, 6 and 8. Thus they can be fitted into corresponding enclosures of these sizes.

The fitting capacity of the frames ranges from 2 modules up to 7 modules. This allows the user to put together a custom connector assembly. .

The basic version consists of sturdy, one-piece modules frames available to the user in either polycarbonate or die-cast zinc

Frames are only compatible with each other when they are made of the same material and identical size.

General ordering data

Version	Heavy-duty connectors, HDC insert, ConCept frame
Order No.	1758550000
Type	HDC-CR24-7B-2 GR
GTIN (EAN)	4032248019779
Qty.	5 items

HDC-CR24-7B-2 GR

Weidmüller Interface GmbH & Co. KG
 Klingenbergstraße 26
 D-32758 Detmold
 Germany

www.weidmueller.com

Technical data

Approvals

Approvals



ROHS Conform

Dimensions and weights

Depth	111 mm	Depth (inches)	4.3701 inch
Height	35 mm	Height (inches)	1.378 inch
Width	34 mm	Width (inches)	1.3386 inch
Net weight	39.95 g		

Temperatures

Limit temperature -40 °C ... 125 °C

Environmental Product Compliance

RoHS Compliance Status	Compliant without exemption
REACH SVHC	Potassium perfluorobutane sulfonate 29420-49-3
SCIP	2f94735a-9fba-4903-842f-4fb9aa902310

ConCept Pneumatic module

UL 94 flammability rating	V-0	Colour	beige
---------------------------	-----	--------	-------

Dimensions

Width	34 mm	Total length base	111 mm
Height of socket	35 mm		

General data

Number of poles	1	Tightening torque	0.5 Nm
Installation size	12	UL 94 flammability rating	V-0
Colour	beige	Tightening torque, max. PE connection	1.5 Nm
Type	Female	Tightening torque, min. PE connection	1.2 Nm
Basic material	Polycarbonate	Series	ConCept frame
Free from halogens	false	Low smoke acc. DIN EN 45545-2	Yes
BG	12		

Connection data PE

Connection type PE	Screw connection	Tightening torque, max. PE connection	1.5 Nm
Tightening torque, min. PE connection	1.2 Nm		

Version

Wire connection cross section AWG, max.	AWG 14	Installation size	12
Basic material	Polycarbonate	BG	12

Technical data

Classifications

ETIM 8.0	EC002312	ETIM 9.0	EC002312
ETIM 10.0	EC002312	ECLASS 14.0	27-44-02-92
ECLASS 15.0	27-44-02-92		