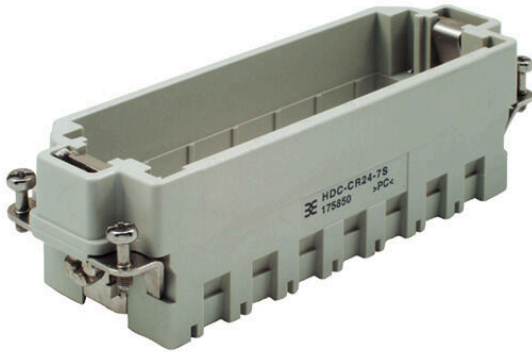


## HDC-CR24-7S GR

**Weidmüller Interface GmbH & Co. KG**  
Klingenbergstraße 26  
D-32758 Detmold  
Germany

[www.weidmueller.com](http://www.weidmueller.com)



The sturdy CR24 module frames are available in polycarbonate or die-cast zinc.

The frames are designed so that 7 individual modules or corresponding double modules can be installed. dementsprechende The CR24 frames are designed to fit the size-8 housings.

### General ordering data

Version	Heavy-duty connectors, HDC insert, ConCept frame
Order No.	<a href="#">1758500000</a>
Type	HDC-CR24-7S GR
GTIN (EAN)	4032248019724
Qty.	5 items

## HDC-CR24-7S GR

Weidmüller Interface GmbH & Co. KG  
Klingenbergstraße 26  
D-32758 Detmold  
Germany

www.weidmueller.com

## Technical data

## Approvals

Approvals



ROHS Conform

## Dimensions and weights

Depth	111 mm	Depth (inches)	4.3701 inch
Height	35 mm	Height (inches)	1.378 inch
Width	34 mm	Width (inches)	1.3386 inch
Net weight	49.34 g		

## Temperatures

Limit temperature -40 °C ... 125 °C

## Environmental Product Compliance

RoHS Compliance Status	Compliant without exemption
REACH SVHC	Potassium perfluorobutane sulfonate 29420-49-3
SCIP	2f94735a-9fba-4903-842f-4fb9aa902310

## ConCept Pneumatic module

UL 94 flammability rating V-0 Colour beige

## Dimensions

Width	34 mm	Total length base	111 mm
Height of plug	35 mm		

## General data

Number of poles	1	Tightening torque	0.5 Nm
Installation size	8	UL 94 flammability rating	V-0
Colour	beige	Tightening torque, max. PE connection	1.5 Nm
Type	Pin	Tightening torque, min. PE connection	1.2 Nm
Basic material	Polycarbonate	Series	ConCept frame
Free from halogens	false	Low smoke acc. DIN EN 45545-2	Yes
BG	8		

## Connection data PE

Connection type PE Screw connection Tightening torque, max. PE connection 1.5 Nm

Tightening torque, min. PE connection 1.2 Nm

## Version

Wire connection cross section AWG, max.	AWG 14	Installation size	8
Basic material	Polycarbonate	BG	8

**Technical data**

**Classifications**

ETIM 8.0	EC002312	ETIM 9.0	EC002312
ETIM 10.0	EC002312	ECLASS 14.0	27-44-02-92
ECLASS 15.0	27-44-02-92		