

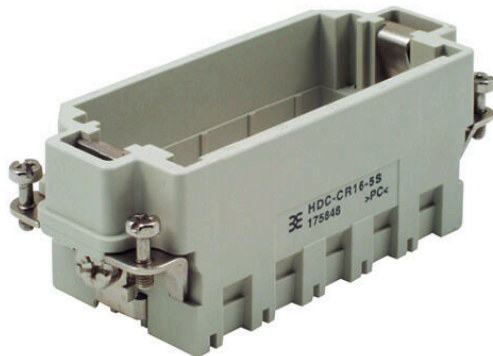
HDC-CR16-5S GR**Weidmüller Interface GmbH & Co. KG**

Klingenbergstraße 26

D-32758 Detmold

Germany

www.weidmueller.com



The sturdy CR16 module frames are available in polycarbonate or die-cast zinc.

The frames are designed so that 5 individual modules or corresponding double modules can be installed. The CR16 frames are designed to fit the size-6 housings.

General ordering data

Version	Heavy-duty connectors, HDC insert, ConCept frame
Order No.	1758480000
Type	HDC-CR16-5S GR
GTIN (EAN)	4032248019700
Qty.	5 items

HDC-CR16-5S GR

Weidmüller Interface GmbH & Co. KG
 Klingenbergstraße 26
 D-32758 Detmold
 Germany

www.weidmueller.com

Technical data

Approvals

Approvals



ROHS Conform

Dimensions and weights

Depth	84.5 mm	Depth (inches)	3.3268 inch
Height	35 mm	Height (inches)	1.378 inch
Width	34 mm	Width (inches)	1.3386 inch
Net weight	39.54 g		

Temperatures

Limit temperature -40 °C ... 125 °C

Environmental Product Compliance

RoHS Compliance Status	Compliant without exemption
REACH SVHC	Potassium perfluorobutane sulfonate 29420-49-3
SCIP	2f94735a-9fba-4903-842f-4fb9aa902310

ConCept Pneumatic module

UL 94 flammability rating V-0 Colour beige

Dimensions

Width	34 mm	Total length base	84.5 mm
Height of plug	35 mm		

General data

Number of poles	1	Installation size	6
UL 94 flammability rating	V-0	Colour	beige
Type	Pin	Basic material	Polycarbonate
Series	ConCept frame	Free from halogens	false
Low smoke acc. DIN EN 45545-2	Yes	BG	6

Connection data PE

Connection type PE Screw connection Tightening torque, max. PE connection 1.5 Nm
 Tightening torque, min. PE connection 1.2 Nm

Version

Wire connection cross section AWG, max.	AWG 14	Installation size	6
Basic material	Polycarbonate	BG	6

Classifications

ETIM 8.0	EC002312	ETIM 9.0	EC002312
ETIM 10.0	EC002312	ECLASS 14.0	27-44-02-92

Technical data

ECLASS 15.0

27-44-02-92
