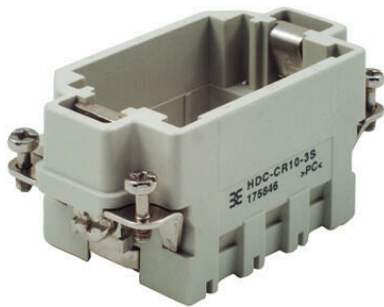


HDC-CR10-3S GR

Weidmüller Interface GmbH & Co. KG
Klingenbergstraße 26
D-32758 Detmold
Germany

www.weidmueller.com



The sturdy CR10 module frames are available in polycarbonate or die-cast zinc.

The frames are designed so that 3 individual modules or corresponding double modules can be installed. The CR10 frames are designed to fit the size-4 housings.

General ordering data

| | |
|------------|--|
| Version | Heavy-duty connectors, HDC insert, ConCept frame |
| Order No. | 1758460000 |
| Type | HDC-CR10-3S GR |
| GTIN (EAN) | 4032248019687 |
| Qty. | 5 items |

HDC-CR10-3S GR

Weidmüller Interface GmbH & Co. KG

Klingenbergstraße 26

D-32758 Detmold

Germany

www.weidmueller.com

Technical data

Approvals

Approvals



ROHS Conform

Dimensions and weights

| | | | |
|------------|---------|-----------------|-------------|
| Depth | 64 mm | Depth (inches) | 2.5197 inch |
| Height | 35 mm | Height (inches) | 1.378 inch |
| Width | 34 mm | Width (inches) | 1.3386 inch |
| Net weight | 37.14 g | | |

Temperatures

Limit temperature -40 °C ... 125 °C

Environmental Product Compliance

| | |
|------------------------|--|
| RoHS Compliance Status | Compliant without exemption |
| REACH SVHC | Potassium perfluorobutane sulfonate 29420-49-3 |
| SCIP | 2f94735a-9fba-4903-842f-4fb9aa902310 |

ConCept Pneumatic module

UL 94 flammability rating V-0 Colour beige

Dimensions

| | | | |
|----------------|-------|-------------------|-------|
| Width | 34 mm | Total length base | 64 mm |
| Height of plug | 35 mm | | |

General data

| | | | |
|--------------------|---------------|---------------------------------------|---------------|
| Number of poles | 1 | Tightening torque | 0.5 Nm |
| Installation size | 4 | UL 94 flammability rating | V-0 |
| Colour | beige | Tightening torque, max. PE connection | 1.5 Nm |
| Type | Pin | Tightening torque, min. PE connection | 1.2 Nm |
| Basic material | Polycarbonate | Series | ConCept frame |
| Free from halogens | false | Low smoke acc. DIN EN 45545-2 | Yes |
| BG | 4 | | |

Connection data PE

| | | | |
|---------------------------------------|------------------|---------------------------------------|--------|
| Connection type PE | Screw connection | Tightening torque, max. PE connection | 1.5 Nm |
| Tightening torque, min. PE connection | 1.2 Nm | | |

Version

| | | | |
|---|---------------|-------------------|---|
| Wire connection cross section AWG, max. | AWG 14 | Installation size | 4 |
| Basic material | Polycarbonate | BG | 4 |

Technical data

Classifications

| | | | |
|-------------|-------------|-------------|-------------|
| ETIM 8.0 | EC002312 | ETIM 9.0 | EC002312 |
| ETIM 10.0 | EC002312 | ECLASS 14.0 | 27-44-02-92 |
| ECLASS 15.0 | 27-44-02-92 | | |