

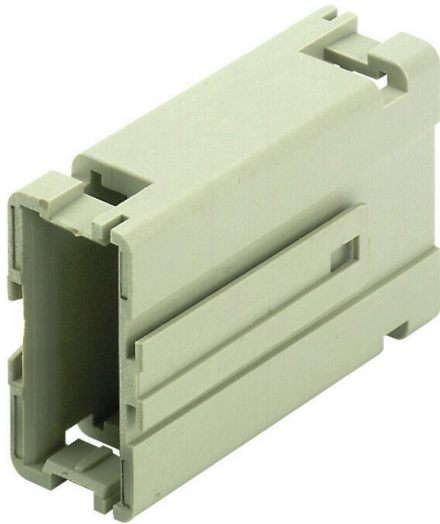
MODUFLEX C-CR**Weidmüller Interface GmbH & Co. KG**

Klingenbergstraße 26

D-32758 Detmold

Germany

www.weidmueller.com



The coupling frame is designed for attaching ConCept basic modules. The ConCept modules snap securely and permanently into the coupling frames.

The ConCept male and female modules ranging from 3 to 20 poles, as well as the ConCept-Bus modules of identical pole count and design can be installed into the coupling frames. Each module can be individually plugged in or extracted. The optional extraction/strain-relief aid and the snap-on installation bracket make ModuFlex-C coupling frames and the male/female modules from the ConCept system very flexible. A wide variety of all-purpose plug-in combinations for all IP20 connections are possible.

General ordering data

Version	Heavy-duty connectors, MODUFLEX C, Modulflex C frame
Order No.	1746060000
Type	MODUFLEX C-CR
GTIN (EAN)	4008 190986476
Qty.	10 items

MODUFLEX C-CR

Weidmüller Interface GmbH & Co. KG
 Klingenbergstraße 26
 D-32758 Detmold
 Germany

www.weidmueller.com

Technical data

Approvals

ROHS	Conform
------	---------

Dimensions and weights

Depth	18 mm	Depth (inches)	0.7087 inch
Height	34 mm	Height (inches)	1.3386 inch
Width	55 mm	Width (inches)	2.1654 inch
Net weight	16.2 g		

Environmental Product Compliance

RoHS Compliance Status	Compliant without exemption
REACH SVHC	No SVHC above 0.1 wt%

ConCept Pneumatic module

Colour	grey
--------	------

Dimensions

Width	55 mm
-------	-------

General data

Colour	grey	Type	other
Basic material	Polycarbonate	Series	Modulflex C frame
Free from halogens	false	Low smoke acc. DIN EN 45545-2	Yes

Version

Basic material	Polycarbonate
----------------	---------------

Classifications

ETIM 8.0	EC002312	ETIM 9.0	EC002312
ETIM 10.0	EC002312	ECLASS 14.0	27-44-02-92
ECLASS 15.0	27-44-02-92		

MODUFLEX C-CR

Weidmüller Interface GmbH & Co. KG
Klingenbergstraße 26
D-32758 Detmold
Germany

www.weidmueller.com

Accessories

Mounting support



We offer a broad portfolio of mounting support for easy handling and supplementation of our products. From various tools to insulating sleeves and various screws, our components are matched to each other down to the last detail and thus facilitate assembly in compliance with the respective standards and protective regulations.

General ordering data

Type	MOFU 35	Version	
Order No.	0495660000	Mounting foot (terminal)	
GTIN (EAN)	4008 1900485 18		
Qty.	20 ST		