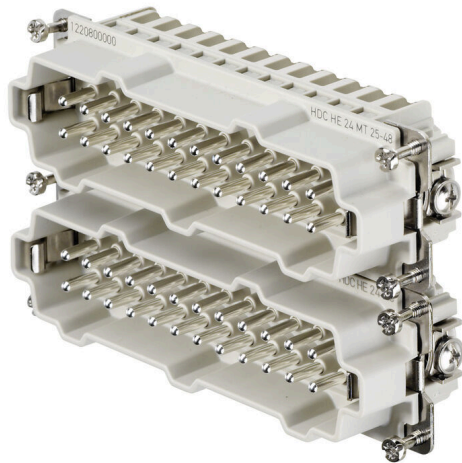


HDC HE 24 MT 25-48

Weidmüller Interface GmbH & Co. KG
Klingenbergstraße 26
D-32758 Detmold
Germany

www.weidmueller.com



For the tension clamp connection, the wire connection level is designed as a tension clamp element. As a result, it is virtually maintenance-free and a safe, permanent and vibration-proof connection is established.

General ordering data

| | |
|------------|--|
| Version | HDC insert, Male, 500 V, 16 A, Number of poles: 24, Tension-clamp connection, Installation size: 8 |
| Order No. | 1745870000 |
| Type | HDC HE 24 MT 25-48 |
| GTIN (EAN) | 4008 190985592 |
| Qty. | 1 items |

HDC HE 24 MT 25-48

Weidmüller Interface GmbH & Co. KG
 Klingenbergstraße 26
 D-32758 Detmold
 Germany

www.weidmueller.com

Technical data

Approvals

Approvals



| | |
|-------------------------|----------------------------|
| ROHS | Conform |
| UL File Number Search | UL Website |
| Certificate No. (cURus) | E92202 |

Dimensions and weights

| | | | |
|------------|---------|-----------------|-------------|
| Depth | 111 mm | Depth (inches) | 4.3701 inch |
| Height | 33.5 mm | Height (inches) | 1.3189 inch |
| Width | 34 mm | Width (inches) | 1.3386 inch |
| Net weight | 91.52 g | | |

Temperatures

| | |
|-------------------|-------------------|
| Limit temperature | -40 °C ... 125 °C |
|-------------------|-------------------|

Environmental Product Compliance

| | |
|--------------------------------------|--|
| RoHS Compliance Status | Compliant with exemption |
| RoHS Exemption (if applicable/known) | 6c |
| REACH SVHC | Lead 7439-92-1, Potassium perfluorobutane sulfonate 29420-49-3 |
| SCIP | b67daa31-7dca-434d-8290-da7fb52f83a2 |

| | | |
|---------------------|--------------------------|---------------------------|
| Chemical resistance | Substance | Acetone |
| | Chemical resistance | Resistant |
| | Substance | Ammonia, watery |
| | Chemical resistance | Conditionally resistant |
| | Substance | Petrol |
| | Chemical resistance | Resistant |
| | Substance | Benzene |
| | Chemical resistance | Resistant |
| | Substance | Diesel oil |
| | Chemical resistance | Conditionally resistant |
| | Substance | Acetic acid, concentrated |
| | Chemical resistance | Resistant |
| | Substance | Potassium hydroxide |
| | Chemical resistance | Conditionally resistant |
| | Substance | Methanol |
| | Chemical resistance | Conditionally resistant |
| | Substance | Motor oil |
| | Chemical resistance | Conditionally resistant |
| | Substance | Lye, diluted |
| | Chemical resistance | Resistant |
| Substance | Hydrochlorofluorocarbons | |
| Chemical resistance | Conditionally resistant | |
| Substance | Outdoor use | |
| Chemical resistance | Conditionally resistant | |

Dimensions

| | | | |
|----------------|---------|-------------------|--------|
| Width | 34 mm | Total length base | 111 mm |
| Height of plug | 33.5 mm | | |

HDC HE 24 MT 25-48

Weidmüller Interface GmbH & Co. KG
Klingenbergstraße 26
D-32758 Detmold
Germany

www.weidmueller.com

Technical data

General data

| | | |
|---------------------------------------|---|--------|
| Number of poles | 24 | |
| Plugging cycles, silver | ≥ 500 | |
| Plugging cycles, gold | ≥ 500 | |
| Type of connection | Tension-clamp connection | |
| Installation size | 8 | |
| UL 94 flammability rating | V-0 | |
| Volume resistance | ≤2 mΩ | |
| Colour | beige | |
| Insulation resistance | 1010 Ω | |
| Insulating material | PC glass-fibre reinforced (UL-listed and railway-certified) | |
| Insulating material group | IIIa | |
| Conductor cross-section | 2.5 mm ² | |
| Tightening torque, max. PE connection | 1.5 Nm | |
| Surface finish | Silver passivated | |
| Type | Male | |
| Pollution severity | 3 | |
| Tightening torque, min. PE connection | 1.2 Nm | |
| Basic material | Copper alloy | |
| Series | HE | |
| Rated voltage (DIN EN 61984) | 500 V | |
| Rated voltage according to UL/CSA | 600 V AC/DC | |
| Rated impulse voltage (DIN EN 61984) | 6 kV | |
| Rated current (DIN EN 61984) | 16 A | |
| Rated current (UR) | Wire connection cross section AWG | AWG 14 |
| | Rated current | 15 A |
| | Wire connection cross section AWG | AWG 16 |
| | Rated current | 10 A |
| | Wire connection cross section AWG | AWG 18 |
| | Rated current | 7 A |
| | Wire connection cross section AWG | AWG 20 |
| Rated current (cUR) | Wire connection cross section AWG | AWG 14 |
| | Rated current | 14.4 A |
| | Wire connection cross section AWG | AWG 16 |
| | Rated current | 11.7 A |
| | Wire connection cross section AWG | AWG 18 |
| | Rated current | 7.6 A |
| | Wire connection cross section AWG | AWG 20 |
| Rated current | 7.2 A | |
| Free from halogens | true | |
| Low smoke acc. DIN EN 45545-2 | Yes | |
| BG | 8 | |
| Number of signal contacts | 0 | |
| Number of power contacts | 24 | |

Connection data PE

| | | | |
|---------------------------------------|-------------------|---------------------------------------|--------------|
| Connection type PE | Screw connection | Blade size, slotted (PE connection) | SD 0.8 x 4.0 |
| Stripping length PE connection | 10 mm | Tightening torque, max. PE connection | 1.5 Nm |
| Tightening torque, min. PE connection | 1.2 Nm | Fixing screw | M 4 |
| Rated cross-section | 4 mm ² | Wire cross section, AWG (PE), min. | AWG 20 |
| Wire cross section, AWG (PE), max. | AWG 12 | | |

HDC HE 24 MT 25-48

Weidmüller Interface GmbH & Co. KG
 Klingenbergstraße 26
 D-32758 Detmold
 Germany

www.weidmueller.com

Technical data

Version

| | | | |
|--|---------------------|---|--------------------------|
| Blade size, slotted (screw connection) | SD 0.5 x 3.0 | Wire connection cross section AWG, max. | AWG 14 |
| Stripping length, rated connection | 8 mm | Type of connection | Tension-clamp connection |
| Installation size | 8 | Volume resistance | ≤2 mΩ |
| Wire connection cross section AWG, min. | AWG 24 | Wire cross-section, solid, max. | 2.5 mm ² |
| Wire cross-section, solid, min. | 0.5 mm ² | Wire connection cross-section, finely stranded with wire-end ferrules DIN 46228/4, max. | 2.5 mm ² |
| Wire connection cross section, finely stranded, max. | 2.5 mm ² | Wire connection cross section, finely stranded, min. | 0.5 mm ² |
| Conductor cross-section, max. | 2.5 mm ² | Conductor cross-section, min. | 0.25 mm ² |
| Surface finish | Silver passivated | Basic material | Copper alloy |
| BG | 8 | | |

Classifications

| | | | |
|-------------|-------------|-------------|-------------|
| ETIM 8.0 | EC000438 | ETIM 9.0 | EC000438 |
| ETIM 10.0 | EC000438 | ECLASS 14.0 | 27-44-02-05 |
| ECLASS 15.0 | 27-44-02-05 | | |

HDC HE 24 MT 25-48

Weidmüller Interface GmbH & Co. KG
Klingenbergstraße 26
D-32758 Detmold
Germany

Drawings

www.weidmueller.com

