

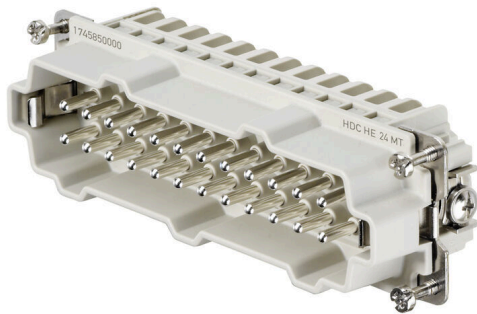
**HDC HE 24 MT****Weidmüller Interface GmbH & Co. KG**

Klingenbergstraße 26

D-32758 Detmold

Germany

www.weidmueller.com



For the tension clamp connection, the wire connection level is designed as a tension clamp element. Thus practically no servicing is required. In addition, a secure and permanent connection is established which is resistant to vibrations.

Number of poles: 24

Rated current: 16 A

Rated voltage: 500 V

Nominal voltage acc. to UL/CSA: 600 V AC/DC

**General ordering data**

|            |  |
|------------|--|
| Version    | HDC insert, Male, 500 V, 16 A, Number of poles: 24, Tension-clamp connection, Installation size: 8 |
| Order No.  | <a href="#">1745850000</a>   |
| Type       | HDC HE 24 MT   |
| GTIN (EAN) | 4008 190985578   |
| Qty.       | 1 items  |

**HDC HE 24 MT**

**Weidmüller Interface GmbH & Co. KG**  
 Klingenbergstraße 26  
 D-32758 Detmold  
 Germany

www.weidmueller.com

**Technical data**

**Approvals**

Approvals



|                         |                            |
|-------------------------|----------------------------|
| ROHS                    | Conform                    |
| UL File Number Search   | <a href="#">UL Website</a> |
| Certificate No. (cURus) | E92202                     |

**Dimensions and weights**

|            |         |                 |             |
|------------|---------|-----------------|-------------|
| Depth      | 111 mm  | Depth (inches)  | 4.3701 inch |
| Height     | 33.5 mm | Height (inches) | 1.3189 inch |
| Width      | 34 mm   | Width (inches)  | 1.3386 inch |
| Net weight | 100 g   |                 |             |

**Temperatures**

|                   |                   |
|-------------------|-------------------|
| Limit temperature | -40 °C ... 125 °C |
|-------------------|-------------------|

**Environmental Product Compliance**

|                                      |  |
|--------------------------------------|--|
| RoHS Compliance Status               | Compliant with exemption                                       |
| RoHS Exemption (if applicable/known) | 6c   |
| REACH SVHC                           | Lead 7439-92-1, Potassium perfluorobutane sulfonate 29420-49-3 |
| SCIP                                 | b67daa31-7dca-434d-8290-da7fb52f83a2                           |

|                     |                          |                           |
|---------------------|--------------------------|---------------------------|
| Chemical resistance | Substance                | Acetone                   |
|                     | Chemical resistance      | Resistant                 |
|                     | Substance                | Ammonia, watery           |
|                     | Chemical resistance      | Conditionally resistant   |
|                     | Substance                | Petrol                    |
|                     | Chemical resistance      | Resistant                 |
|                     | Substance                | Benzene                   |
|                     | Chemical resistance      | Resistant                 |
|                     | Substance                | Diesel oil                |
|                     | Chemical resistance      | Conditionally resistant   |
|                     | Substance                | Acetic acid, concentrated |
|                     | Chemical resistance      | Resistant                 |
|                     | Substance                | Potassium hydroxide       |
|                     | Chemical resistance      | Conditionally resistant   |
|                     | Substance                | Methanol                  |
|                     | Chemical resistance      | Conditionally resistant   |
|                     | Substance                | Motor oil                 |
|                     | Chemical resistance      | Conditionally resistant   |
|                     | Substance                | Lye, diluted              |
|                     | Chemical resistance      | Resistant                 |
| Substance           | Hydrochlorofluorocarbons |                           |
| Chemical resistance | Conditionally resistant  |                           |
| Substance           | Outdoor use              |                           |
| Chemical resistance | Conditionally resistant  |                           |

**Dimensions**

|                |         |                   |        |
|----------------|---------|-------------------|--------|
| Width          | 34 mm   | Total length base | 111 mm |
| Height of plug | 33.5 mm |                   |        |

## HDC HE 24 MT

Weidmüller Interface GmbH &amp; Co. KG

Klingenbergstraße 26

D-32758 Detmold

Germany

www.weidmueller.com

## Technical data

## General data

|                                       |   |        |
|---------------------------------------|---|--------|
| Number of poles                       | 24  |        |
| Plugging cycles, silver               | ≥ 500   |        |
| Plugging cycles, gold                 | ≥ 500   |        |
| Type of connection                    | Tension-clamp connection                                    |        |
| Installation size                     | 8   |        |
| UL 94 flammability rating             | V-0   |        |
| Volume resistance                     | ≤2 mΩ   |        |
| Insulation resistance                 | 1010 Ω  |        |
| Insulating material                   | PC glass-fibre reinforced (UL-listed and railway-certified) |        |
| Insulating material group             | IIIa  |        |
| Conductor cross-section               | 2.5 mm <sup>2</sup>   |        |
| Tightening torque, max. PE connection | 1.5 Nm  |        |
| Surface finish                        | Silver passivated   |        |
| Type                                  | Male  |        |
| Pollution severity                    | 3   |        |
| Tightening torque, min. PE connection | 1.2 Nm  |        |
| Basic material                        | Copper alloy  |        |
| Series                                | HE  |        |
| Rated voltage (DIN EN 61984)          | 500 V   |        |
| Rated voltage according to UL/CSA     | 600 V AC/DC   |        |
| Rated impulse voltage (DIN EN 61984)  | 6 kV  |        |
| Rated current (DIN EN 61984)          | 16 A  |        |
| Rated current (UR)                    | Wire connection cross section AWG                           | AWG 14 |
|                                       | Rated current   | 15 A   |
|                                       | Wire connection cross section AWG                           | AWG 16 |
|                                       | Rated current   | 10 A   |
|                                       | Wire connection cross section AWG                           | AWG 18 |
|                                       | Rated current   | 7 A    |
| Rated current (cUR)                   | Wire connection cross section AWG                           | AWG 20 |
|                                       | Rated current   | 5 A    |
|                                       | Wire connection cross section AWG                           | AWG 14 |
|                                       | Rated current   | 14.4 A |
|                                       | Wire connection cross section AWG                           | AWG 16 |
|                                       | Rated current   | 11.7 A |
|                                       | Wire connection cross section AWG                           | AWG 18 |
|                                       | Rated current   | 7.6 A  |
|                                       | Wire connection cross section AWG                           | AWG 20 |
|                                       | Rated current   | 7.2 A  |
| Free from halogens                    | true  |        |
| Low smoke acc. DIN EN 45545-2         | Yes   |        |
| BG                                    | 8   |        |
| Number of signal contacts             | 0   |        |
| Number of power contacts              | 24  |        |

## Connection data PE

|                                       |                   |                                       |              |
|---------------------------------------|-------------------|---------------------------------------|--------------|
| Connection type PE                    | Screw connection  | Blade size, slotted (PE connection)   | SD 0.8 x 4.0 |
| Stripping length PE connection        | 10 mm             | Tightening torque, max. PE connection | 1.5 Nm       |
| Tightening torque, min. PE connection | 1.2 Nm            | Fixing screw                          | M 4          |
| Rated cross-section                   | 4 mm <sup>2</sup> | Wire cross section, AWG (PE), min.    | AWG 20       |
| Wire cross section, AWG (PE), max.    | AWG 12            |                                       |              |

## HDC HE 24 MT

**Weidmüller Interface GmbH & Co. KG**  
 Klingenbergstraße 26  
 D-32758 Detmold  
 Germany

[www.weidmueller.com](http://www.weidmueller.com)

## Technical data

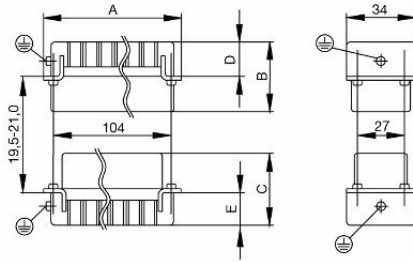
### Version

|  |                     |   |                          |
|--|---------------------|---|--------------------------|
| Blade size, slotted (screw connection)               | SD 0.5 x 3.0        | Wire connection cross section AWG, max.   | AWG 14                   |
| Stripping length, rated connection                   | 8 mm                | Type of connection  | Tension-clamp connection |
| Installation size                                    | 8                   | Volume resistance   | ≤2 mΩ                    |
| Wire connection cross section AWG, min.              | AWG 24              | Wire cross-section, solid, max.   | 2.5 mm <sup>2</sup>      |
| Wire cross-section, solid, min.                      | 0.5 mm <sup>2</sup> | Wire connection cross-section, finely stranded with wire-end ferrules DIN 46228/4, max. | 2.5 mm <sup>2</sup>      |
| Wire connection cross section, finely stranded, max. | 2.5 mm <sup>2</sup> | Wire connection cross section, finely stranded, min.                                    | 0.5 mm <sup>2</sup>      |
| Conductor cross-section, max.                        | 2.5 mm <sup>2</sup> | Conductor cross-section, min.   | 0.25 mm <sup>2</sup>     |
| Surface finish                                       | Silver passivated   | Basic material  | Copper alloy             |
| BG   | 8                   |   |                          |

### Classifications

|             |             |             |             |
|-------------|-------------|-------------|-------------|
| ETIM 8.0    | EC000438    | ETIM 9.0    | EC000438    |
| ETIM 10.0   | EC000438    | ECLASS 14.0 | 27-44-02-05 |
| ECLASS 15.0 | 27-44-02-05 |             |             |

Drawings



## HDC HE 24 MT

Weidmüller Interface GmbH &amp; Co. KG

Klingenbergstraße 26

D-32758 Detmold

Germany

www.weidmueller.com

## Accessories

## Slotted screwdriver



VDE insulated slot-head screwdriver, SDI DIN 7437, ISO 2380/2, drive output acc. to DIN 5264, ISO 2380/1. SoftFinish grip

## General ordering data

|            |                            |                          |
|------------|----------------------------|--------------------------|
| Type       | SDIS 0.5X3.0X100           | Version                  |
| Order No.  | <a href="#">9008380000</a> | Screwdriver, Screwdriver |
| GTIN (EAN) | 4032248056347              |                          |
| Qty.       | 1 ST                       |                          |
| Type       | SDS 0.5X3.0X80             | Version                  |
| Order No.  | <a href="#">9008320000</a> | Screwdriver, Screwdriver |
| GTIN (EAN) | 4032248056262              |                          |
| Qty.       | 1 ST                       |                          |
| Type       | SDIS 0.6X3.5X100           | Version                  |
| Order No.  | <a href="#">9008390000</a> | Screwdriver, Screwdriver |
| GTIN (EAN) | 4032248056354              |                          |
| Qty.       | 1 ST                       |                          |
| Type       | SDS 0.6X3.5X100            | Version                  |
| Order No.  | <a href="#">9008330000</a> | Screwdriver, Screwdriver |
| GTIN (EAN) | 4032248056286              |                          |
| Qty.       | 1 ST                       |                          |
| Type       | SDIS 0.8X4.0X100           | Version                  |
| Order No.  | <a href="#">9008400000</a> | Screwdriver, Screwdriver |
| GTIN (EAN) | 4032248056361              |                          |
| Qty.       | 1 ST                       |                          |
| Type       | SDS 0.8X4.0X100            | Version                  |
| Order No.  | <a href="#">9008340000</a> | Screwdriver, Screwdriver |
| GTIN (EAN) | 4032248056293              |                          |
| Qty.       | 1 ST                       |                          |

## Crosshead screwdriver Phillips



VDE insulated crosshead screwdriver, for Phillips screws, SDIK PH DIN 7438, ISO 8764/2-PH, output to ISO 8764-PH, SoftFinish grip

## HDC HE 24 MT

**Weidmüller Interface GmbH & Co. KG**  
 Klingenbergstraße 26  
 D-32758 Detmold  
 Germany

www.weidmueller.com

## Accessories

### General ordering data

|            |                            |                          |
|------------|----------------------------|--------------------------|
| Type       | SDIK PH1                   | Version                  |
| Order No.  | <a href="#">9008570000</a> | Screwdriver, Screwdriver |
| GTIN (EAN) | 4032248056569              |                          |
| Qty.       | 1 ST                       |                          |
| Type       | SDK PH1                    | Version                  |
| Order No.  | <a href="#">9008480000</a> | Screwdriver, Screwdriver |
| GTIN (EAN) | 4032248056477              |                          |
| Qty.       | 1 ST                       |                          |

### DSTV



Various accessories are available for our inserts. This includes coding elements for the inserts.

### General ordering data

|            |                            |  |
|------------|----------------------------|--|
| Type       | DSTV COBU5                 | Version  |
| Order No.  | <a href="#">1471500000</a> | Heavy-duty connectors, Accessories, Coding element |
| GTIN (EAN) | 4008190178543              |  |
| Qty.       | 100 ST                     |  |
| Type       | DSTV COST4                 | Version  |
| Order No.  | <a href="#">1471300000</a> | Heavy-duty connectors, Accessories, Coding System  |
| GTIN (EAN) | 4008190017354              |  |
| Qty.       | 100 ST                     |  |