

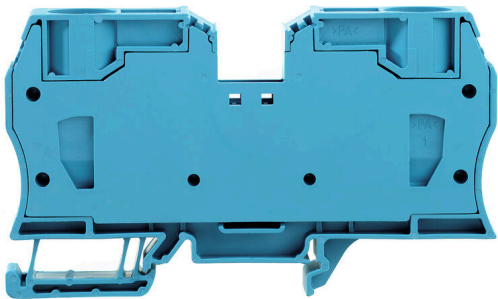
**ZDU 35 BL****Weidmüller Interface GmbH & Co. KG**

Klingenbergstraße 26

D-32758 Detmold

Germany

www.weidmueller.com

**Product image**

To feed through power, signal, and data is the classical requirement in electrical engineering and panel building. The insulating material, the connection system and the design of the terminal blocks are the differentiating features. A feed-through terminal block is suitable for joining and/or connecting one or more conductors. They could have one or more connection levels that are on the same potential or insulated against one another.

**General ordering data**

|            |  |
|------------|--|
| Version    | Feed-through terminal, Tension-clamp connection, 35 mm <sup>2</sup> , 800 V, 125 A, blue |
| Order No.  | <a href="#">1739630000</a>   |
| Type       | ZDU 35 BL  |
| GTIN (EAN) | 4008 190957087   |
| Qty.       | 10 items   |

## ZDU 35 BL

**Weidmüller Interface GmbH & Co. KG**  
 Klingenbergstraße 26  
 D-32758 Detmold  
 Germany

www.weidmueller.com

## Technical data

### Approvals

Approvals



|                           |                            |
|---------------------------|----------------------------|
| ROHS                      | Conform                    |
| UL File Number Search     | <a href="#">UL Website</a> |
| Certificate No. (cURus)   | E60693                     |
| Certificate No. (cURusEX) | E184763                    |

### Dimensions and weights

|                          |             |                |             |
|--------------------------|-------------|----------------|-------------|
| Depth                    | 58.5 mm     | Depth (inches) | 2.3031 inch |
| Depth including DIN rail | 59.5 mm     | Height         | 100.5 mm    |
| Height (inches)          | 3.9567 inch | Width          | 16 mm       |
| Width (inches)           | 0.6299 inch | Net weight     | 83.21 g     |

### Temperatures

|                                  |                |                                  |                |
|----------------------------------|----------------|----------------------------------|----------------|
| Storage temperature              | -25 °C...55 °C | Ambient temperature              | -50 °C...75 °C |
| Continuous operating temp., min. | -50 °C         | Continuous operating temp., max. | 120 °C         |

### Environmental Product Compliance

|                        |                             |
|------------------------|-----------------------------|
| RoHS Compliance Status | Compliant without exemption |
| REACH SVHC             | No SVHC above 0.1 wt%       |

### Material data

|                           |       |        |      |
|---------------------------|-------|--------|------|
| Basic material            | Wemid | Colour | blue |
| UL 94 flammability rating | V-0   |        |      |

### Rating data IECEX/ATEX

|                                |                    |                                 |                    |
|--------------------------------|--------------------|---------------------------------|--------------------|
| Certificate No. (ATEX)         | DEMKO15ATEX1467U   | Certificate No. (IECEX)         | IECEXULD15.0008U   |
| Max. voltage (ATEX)            | 690 V              | Current (ATEX)                  | 110 A              |
| Wire cross section max. (ATEX) | 35 mm <sup>2</sup> | Max. voltage (IECEX)            | 690 V              |
| Current (IECEX)                | 110 A              | Wire cross section max. (IECEX) | 35 mm <sup>2</sup> |
| Marking EN 60079-7             | Ex eb II C Gb      | Ex 2014/34/EU label             | II 2 G D           |

### System specifications

|                                     |  |                               |    |
|-------------------------------------|--|-------------------------------|----|
| Version                             | Tension-clamp connection, for plug-in cross-connector, in closed state | End cover plate required      | No |
| Number of potentials                | 1  | Number of levels              | 1  |
| Number of clamping points per level | 2  | Number of potentials per tier | 1  |
| Levels cross-connected internally   | No   | PE connection                 | No |
| Mounting rail                       | TS 35  |                               |    |

## ZDU 35 BL

Weidmüller Interface GmbH &amp; Co. KG

Klingenbergstraße 26

D-32758 Detmold

Germany

www.weidmueller.com

## Technical data

## Additional technical data

|                     |                 |                             |     |
|---------------------|-----------------|-----------------------------|-----|
| Open sides          | closed          | Number of similar terminals | 1   |
| Installation advice | Direct mounting | Explosion-tested version    | Yes |
| Type of mounting    | Snap-on         |                             |     |

## CSA rating data

|                               |        |                       |                |
|-------------------------------|--------|-----------------------|----------------|
| Wire cross section max. (CSA) | 2 AWG  | Voltage size C (CSA)  | 600 V          |
| Current size C (CSA)          | 120 A  | Certificate No. (CSA) | 200039-1152892 |
| Voltage size B (CSA)          | 600 V  | Current size B (CSA)  | 120 A          |
| Voltage size D (CSA)          | 600 V  | Current size D (CSA)  | 5 A            |
| Wire cross section min. (CSA) | 12 AWG |                       |                |

## Conductors for clamping (additional connection)

Connection type, additional connection Tension-clamp connection

## Conductors for clamping (rated connection)

|   |                          |   |                     |
|---|--------------------------|---|---------------------|
| Gauge to IEC 60947-1  | A8                       | Wire connection cross section AWG, max.   | AWG 2               |
| Connection direction  | top                      | Stripping length  | 25 mm               |
| Type of connection  | Tension-clamp connection | Number of connections   | 2                   |
| Clamping range, max.  | 35 mm <sup>2</sup>       | Clamping range, min.  | 2.5 mm <sup>2</sup> |
| Blade size  | 1.0 x 5.5 mm             | Wire connection cross section AWG, min.   | AWG 12              |
| Wire connection cross-section, finely stranded with wire-end ferrules DIN 46228/4, max. | 35 mm <sup>2</sup>       | Wire connection cross-section, finely stranded with wire-end ferrules DIN 46228/4, min. | 2.5 mm <sup>2</sup> |
| Wire connection cross-section, finely stranded with wire-end ferrules DIN 46228/1, max. | 35 mm <sup>2</sup>       | Wire connection cross-section, finely stranded with wire-end ferrules DIN 46228/1, min. | 2.5 mm <sup>2</sup> |
| Wire connection cross section, finely stranded, max.                                    | 35 mm <sup>2</sup>       | Wire connection cross section, finely stranded, min.                                    | 2.5 mm <sup>2</sup> |
| Connection cross-section, stranded, max.  | 35 mm <sup>2</sup>       | Connection cross-section, stranded, min.  | 2.5 mm <sup>2</sup> |
| Wire connection cross-section, solid core, max.   | 16 mm <sup>2</sup>       | Wire connection cross-section, solid core, min.   | 2.5 mm <sup>2</sup> |
| Connection cross-section, finely stranded, min.   | 2.5 mm <sup>2</sup>      |   |                     |

## General

|   |        |                     |                 |
|---|--------|---------------------|-----------------|
| Wire connection cross section AWG, max. | AWG 2  | Installation advice | Direct mounting |
| Wire connection cross section AWG, min. | AWG 12 | Standards           | IEC 60947-7-1   |
| Mounting rail                           | TS 35  |                     |                 |

## Rating data

|  |                    |                                 |               |
|--|--------------------|---------------------------------|---------------|
| Rated cross-section                          | 35 mm <sup>2</sup> | Rated voltage                   | 800 V         |
| Rated DC voltage                             | 800 V              | Nominal current                 | 125 A         |
| Current at maximum wires                     | 125 A              | Standards                       | IEC 60947-7-1 |
| Volume resistance according to IEC 60947-7-x | 0.26 mΩ            | Rated impulse withstand voltage | 8 kV          |
| Power loss in accordance with IEC 60947-7-x  | 4.00 W             | Pollution severity              | 3             |

## Technical data

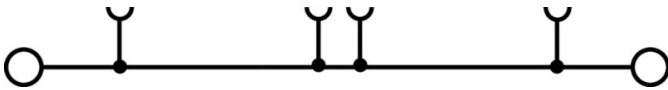
### UL rating data

|                         |        |
|-------------------------|--------|
| Certificate No. (cURus) | E60693 |
|-------------------------|--------|

### Classifications

|             |             |             |             |
|-------------|-------------|-------------|-------------|
| ETIM 8.0    | EC000897    | ETIM 9.0    | EC000897    |
| ETIM 10.0   | EC000897    | ECLASS 14.0 | 27-25-01-01 |
| ECLASS 15.0 | 27-25-01-01 |             |             |

**Drawings**



## ZDU 35 BL

**Weidmüller Interface GmbH & Co. KG**  
 Klingenbergstraße 26  
 D-32758 Detmold  
 Germany

www.weidmueller.com

## Accessories

## Cross connector



The distribution or multiplication of a potential to adjoining terminal blocks is realized via a cross-connection. Additional wiring effort can be easily avoided. Even if the poles are broken out, contact reliability in the terminal blocks is still ensured. Our portfolio offers pluggable and screwable cross-connection systems for modular terminal blocks.

## General ordering data

|            |                            |                                     |  |
|------------|----------------------------|-------------------------------------|--|
| Type       | ZQV 35/2                   | Version                             |  |
| Order No.  | <a href="#">1739700000</a> | Accessories, Cross-connector, 125 A |  |
| GTIN (EAN) | 4008190957155              |                                     |  |
| Qty.       | 10 ST                      |                                     |  |

## End bracket



Weidmüller's range of products includes end brackets that guarantee a permanent, reliable mounting on the terminal rail and prevent sliding. Versions with and without screws are available. The end brackets include marking options, also for group markers, and also a test plug holder.

## General ordering data

|            |                            |  |  |
|------------|----------------------------|--|--|
| Type       | EW 35                      | Version  |  |
| Order No.  | <a href="#">0383560000</a> | End bracket, beige, TS 35, V-2, Wemid, Width: 8.5 mm, 100 °C     |  |
| GTIN (EAN) | 4008190181314              |  |  |
| Qty.       | 50 ST                      |  |  |
| Type       | EW 35 GR 7032              | Version  |  |
| Order No.  | <a href="#">0383530000</a> | End bracket, grey, TS 35, V-0, Wemid, Width: 9 mm, 120 °C        |  |
| GTIN (EAN) | 4008190027322              |  |  |
| Qty.       | 50 ST                      |  |  |
| Type       | EW 35/SCHA/M3              | Version  |  |
| Order No.  | <a href="#">0258660000</a> | End bracket, beige, TS 35, V-2, Wemid, Width: 16.5 mm, 100 °C    |  |
| GTIN (EAN) | 4008190033477              |  |  |
| Qty.       | 20 ST                      |  |  |
| Type       | WEW 35/1                   | Version  |  |
| Order No.  | <a href="#">1059000000</a> | End bracket, dark beige, TS 35, V-2, Wemid, Width: 12 mm, 100 °C |  |
| GTIN (EAN) | 4008190172282              |  |  |
| Qty.       | 50 ST                      |  |  |
| Type       | WEW 35/2                   | Version  |  |
| Order No.  | <a href="#">1061200000</a> | End bracket, dark beige, TS 35, HB, Wemid, Width: 8 mm, 100 °C   |  |
| GTIN (EAN) | 4008190030230              |  |  |
| Qty.       | 50 ST                      |  |  |

## ZDU 35 BL

**Weidmüller Interface GmbH & Co. KG**  
 Klingenbergstraße 26  
 D-32758 Detmold  
 Germany

www.weidmueller.com

## Accessories

|            |                            |   |
|------------|----------------------------|---|
| Type       | ZEW 35                     | Version   |
| Order No.  | <a href="#">9540000000</a> | End bracket, dark beige, TS 35, V-2, Wemid, Width: 6 mm, 100 °C |
| GTIN (EAN) | 4008190956264              |   |
| Qty.       | 20 ST                      |   |
| Type       | ZEW 35/2                   | Version   |
| Order No.  | <a href="#">8630740000</a> | End bracket, dark beige, TS 35, V-2, Wemid, Width: 8 mm, 100 °C |
| GTIN (EAN) | 4032248348916              |   |
| Qty.       | 20 ST                      |   |

## Testadapter and testsockets

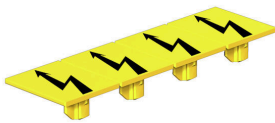


Test adapters and test plugs are used for the electrical connection between terminal blocks and the test equipment. In this way, an electrical contact can be established in the wired state and measurements can be done easily.

## General ordering data

|            |                            |                                       |
|------------|----------------------------|---------------------------------------|
| Type       | PS 2.3 RT                  | Version                               |
| Order No.  | <a href="#">0180400000</a> | Test adapter (terminal), 230 V, 20 mA |
| GTIN (EAN) | 4008190060121              |                                       |
| Qty.       | 20 ST                      |                                       |

## Warning cover



Warning covers with a flash symbol provide more safety for man and machine. They are used where external voltage must be indicated within the application.

## General ordering data

|            |                            |                 |
|------------|----------------------------|-----------------|
| Type       | ZAD 6/5                    | Version         |
| Order No.  | <a href="#">1752620000</a> | Z-series, Cover |
| GTIN (EAN) | 4032248007929              |                 |
| Qty.       | 20 ST                      |                 |

## ZDU 35 BL

**Weidmüller Interface GmbH & Co. KG**  
 Klingenbergstraße 26  
 D-32758 Detmold  
 Germany

## Accessories

www.weidmueller.com

### STR transparent strips



#### General ordering data

|            |                            |  |  |
|------------|----------------------------|--|--|
| Type       | STR 7 F.SCHT 7             | Version  |  |
| Order No.  | <a href="#">0515300000</a> | Terminal markers, Protective cap, 27 x 6.3 mm, Transparent |  |
| GTIN (EAN) | 4008190182175              |  |  |
| Qty.       | 20 ST                      |  |  |

### Blank



The Dekafix (DEK) marker is the universal marker for all conductor and plug-in connectors as well as for electronic sub-assemblies. The system is ideal for short number sequences and covers a wide range of ready-printed markers.

Strips for fast installation in only one work step. The printing is easy to read, rich in contrast and available in various widths.

- Large range of ready-to-use markers
  - Strips for fast installation
  - Terminal markers, suitable for all Weidmüller cable connectors
  - Available as blank MultiCard or with standard printing
- For custom printing: Please send us a file of our labeling software M-Print PRO or M-Print PRO Online (without installation) for your labeling specifications.

#### General ordering data

|            |                            |  |  |
|------------|----------------------------|--|--|
| Type       | DEK 5/5 MC NE WS           | Version  |  |
| Order No.  | <a href="#">1609801044</a> | Dekafix, Terminal marker, 5 x 5 mm, Pitch in mm (P): 5.00          |  |
| GTIN (EAN) | 4008190397111              | Weidmueller, white   |  |
| Qty.       | 1000 ST                    |  |  |
| Type       | ZS 15/5 MC NE WS           | Version  |  |
| Order No.  | <a href="#">1646630000</a> | ZS, Terminal marker, 15 x 5 mm, Pitch in mm (P): 5.00 Weidmueller, |  |
| GTIN (EAN) | 4008190401214              | Allen-Bradley, white   |  |
| Qty.       | 480 ST                     |  |  |

## ZDU 35 BL

**Weidmüller Interface GmbH & Co. KG**  
 Klingenbergstraße 26  
 D-32758 Detmold  
 Germany

www.weidmueller.com

## Accessories

### ZGB pivotable group tag holder



The ZGB 15 is a hinged group tag carrier. The tag carrier can hold the dekafix 5, WS 12/5 terminal markers or the inlay tag ESO 15.

The ZGB 30 is a hinged group tag carrier. The tag carrier can hold the dekafix 5, WS 12/5 terminal markers or the inlay tag ESO 7.

Inlay tags and protective strips can be found under "Accessories".

#### General ordering data

|            |                            |   |  |
|------------|----------------------------|---|--|
| Type       | ZGB 30                     | Version   |  |
| Order No.  | <a href="#">1611930000</a> | Terminal markers, Terminal marker, 32 x 7 mm, Pitch in mm (P): 5.00 |  |
| GTIN (EAN) | 4008190002251              | Weidmueller, white  |  |
| Qty.       | 20 ST                      |   |  |

### Marker holder



The marker holder offer the possibility of additional mounting of standard markers with a pitch of 5 or 5.1 mm. The angled holders can be optionally snapped together and could be mounted in all standard marking channels of the Klippon® Connect modular terminal blocks. Fitting marker types could be found under the respective accessories of the designation marking holder.

#### General ordering data

|            |                            |                            |  |
|------------|----------------------------|----------------------------|--|
| Type       | BZT 1 WS 10/5              | Version                    |  |
| Order No.  | <a href="#">1805490000</a> | Accessories, Marker holder |  |
| GTIN (EAN) | 4032248270231              |                            |  |
| Qty.       | 100 ST                     |                            |  |
| Type       | BZT 2 WS 10/5              | Version                    |  |
| Order No.  | <a href="#">1805480000</a> | Accessories, Marker holder |  |
| GTIN (EAN) | 4032248270224              |                            |  |
| Qty.       | 100 ST                     |                            |  |
| Type       | BZT 1 ZA WS 10/5           | Version                    |  |
| Order No.  | <a href="#">1805520000</a> | Accessories, Marker holder |  |
| GTIN (EAN) | 4032248270248              |                            |  |
| Qty.       | 100 ST                     |                            |  |

## ZDU 35 BL

Weidmüller Interface GmbH &amp; Co. KG

Klingenbergstraße 26

D-32758 Detmold

Germany

## Accessories

www.weidmueller.com

## Blank



The Dekafix (DEK) marker is the universal marker for all conductor and plug-in connectors as well as for electronic sub-assemblies. The system is ideal for short number sequences and covers a wide range of ready-printed markers.

Strips for fast installation in only one work step. The printing is easy to read, rich in contrast and available in various widths.

- Large range of ready-to-use markers
  - Strips for fast installation
  - Terminal markers, suitable for all Weidmüller cable connectors
  - Available as blank MultiCard or with standard printing
- For custom printing: Please send us a file of our labeling software M-Print PRO or M-Print PRO Online (without installation) for your labeling specifications.

## General ordering data

|            |                            |         |   |
|------------|----------------------------|---------|---|
| Type       | DEK 5/8 MC NE WS           | Version |   |
| Order No.  | <a href="#">1856740000</a> |         | Dekafix, Terminal marker, 5 x 8 mm, Pitch in mm (P): 8.00 |
| GTIN (EAN) | 4032248400850              |         | Weidmueller, white  |
| Qty.       | 800 ST                     |         |   |

## Custom printing



The Dekafix (DEK) marker is the universal marker for all conductor and plug-in connectors as well as for electronic sub-assemblies. The system is ideal for short number sequences and covers a wide range of ready-printed markers.

Strips for fast installation in only one work step. The printing is easy to read, rich in contrast and available in various widths.

- Large range of ready-to-use markers
  - Strips for fast installation
  - Terminal markers, suitable for all Weidmüller cable connectors
  - Available as blank MultiCard or with standard printing
- For custom printing: Please send us a file of our labeling software M-Print PRO or M-Print PRO Online (without installation) for your labeling specifications.

## General ordering data

|            |                            |         |   |
|------------|----------------------------|---------|---|
| Type       | DEK 5/8 MC SDR             | Version |   |
| Order No.  | <a href="#">1856750000</a> |         | Dekafix, Terminal marker, 5 x 8 mm, Pitch in mm (P): 8.00 |
| GTIN (EAN) | 4032248400867              |         | Weidmueller, To customer specification                    |
| Qty.       | 160 ST                     |         |   |

## ZDU 35 BL

Weidmüller Interface GmbH &amp; Co. KG

Klingenbergstraße 26

D-32758 Detmold

Germany

## Accessories

www.weidmueller.com

## Plus



The Dekafix (DEK) marker is the universal marker for all conductor and plug-in connectors as well as for electronic sub-assemblies. The system is ideal for short number sequences and covers a wide range of ready-printed markers.

Strips for fast installation in only one work step. The printing is easy to read, rich in contrast and available in various widths.

- Large range of ready-to-use markers
  - Strips for fast installation
  - Terminal markers, suitable for all Weidmüller cable connectors
  - Available as blank MultiCard or with standard printing
- For custom printing: Please send us a file of our labeling software M-Print PRO or M-Print PRO Online (without installation) for your labeling specifications.

## General ordering data

|            |                            |   |
|------------|----------------------------|---|
| Type       | DEK 5/8 PLUS MC NE WS      | Version   |
| Order No.  | <a href="#">1046350000</a> | Dekafix, Terminal marker, 5 x 8 mm, Pitch in mm (P): 8.00 |
| GTIN (EAN) | 4032248782055              | Weidmueller, white  |
| Qty.       | 800 ST                     |   |

## Custom printing



The Dekafix (DEK) marker is the universal marker for all conductor and plug-in connectors as well as for electronic sub-assemblies. The system is ideal for short number sequences and covers a wide range of ready-printed markers.

Strips for fast installation in only one work step. The printing is easy to read, rich in contrast and available in various widths.

- Large range of ready-to-use markers
  - Strips for fast installation
  - Terminal markers, suitable for all Weidmüller cable connectors
  - Available as blank MultiCard or with standard printing
- For custom printing: Please send us a file of our labeling software M-Print PRO or M-Print PRO Online (without installation) for your labeling specifications.

## General ordering data

|            |                            |   |
|------------|----------------------------|---|
| Type       | DEK 5/8 PLUS MC SDR        | Version   |
| Order No.  | <a href="#">1046370000</a> | Dekafix, Terminal marker, 5 x 8 mm, Pitch in mm (P): 8.00 |
| GTIN (EAN) | 4032248782079              | Weidmueller, To customer specification                    |
| Qty.       | 160 ST                     |   |

## ZDU 35 BL

Weidmüller Interface GmbH &amp; Co. KG

Klingenbergstraße 26

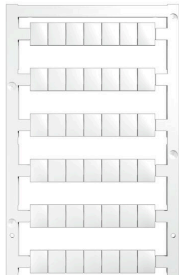
D-32758 Detmold

Germany

## Accessories

www.weidmueller.com

## Blank



WS markers are the perfect match for the W-series connectors. Thanks to their system compatibility, the WS tags can also be used with the I-series and the Z-series. The large marking surfaces do not only permit long character strings but also multi-line text. WS markers are ideal for labels with long, customised character strings. Thanks to the proven MultiCard format, printing with PrintJet CONNECT oder/or Plotter is possible.

- Can be fitted in strips or individually
- Markers in proven MultiCard format

For custom printing: Please send us a file of our labeling software M-Print PRO or M-Print PRO Online (without installation) for your labeling specifications.

## General ordering data

|            |                            |  |
|------------|----------------------------|--|
| Type       | WS 10/8 PLUS MC NE WS      | Version  |
| Order No.  | <a href="#">1905950000</a> | WS, Terminal marker, 10 x 8 mm, Pitch in mm (P): 8.00 Weidmueller, |
| GTIN (EAN) | 4032248528103              | white  |
| Qty.       | 420 ST                     |  |

## Custom printing



WS markers are the perfect match for the W-series connectors. Thanks to their system compatibility, the WS tags can also be used with the I-series and the Z-series. The large marking surfaces do not only permit long character strings but also multi-line text. WS markers are ideal for labels with long, customised character strings. Thanks to the proven MultiCard format, printing with PrintJet CONNECT oder/or Plotter is possible.

- Can be fitted in strips or individually
- Markers in proven MultiCard format

For custom printing: Please send us a file of our labeling software M-Print PRO or M-Print PRO Online (without installation) for your labeling specifications.

## General ordering data

|            |                            |  |
|------------|----------------------------|--|
| Type       | WS 10/8 PLUS MC SDR        | Version  |
| Order No.  | <a href="#">1906030000</a> | WS, Terminal marker, 10 x 8 mm, Pitch in mm (P): 8.00 Weidmueller, |
| GTIN (EAN) | 4032248528196              | To customer specification  |
| Qty.       | 84 ST                      |  |

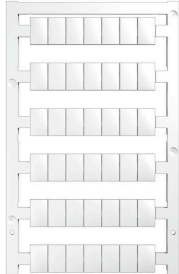
## ZDU 35 BL

**Weidmüller Interface GmbH & Co. KG**  
 Klingenbergstraße 26  
 D-32758 Detmold  
 Germany

www.weidmueller.com

## Accessories

### Blank



WS markers are the perfect match for the W-series connectors. Thanks to their system compatibility, the WS tags can also be used with the I-series and the Z-series. The large marking surfaces do not only permit long character strings but also multi-line text. WS markers are ideal for labels with long, customised character strings. Thanks to the proven MultiCard format, printing with PrintJet CONNECT oder/or Plotter is possible.

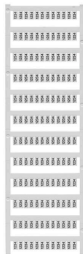
- Can be fitted in strips or individually
- Markers in proven MultiCard format

For custom printing: Please send us a file of our labeling software M-Print PRO or M-Print PRO Online (without installation) for your labeling specifications.

### General ordering data

|            |                            |  |
|------------|----------------------------|--|
| Type       | WS 12/8 PLUS MC NE WS      | Version  |
| Order No.  | <a href="#">1906000000</a> | WS, Terminal marker, 12 x 8 mm, Pitch in mm (P): 8.00 Weidmueller, |
| GTIN (EAN) | 4032248528158              | white  |
| Qty.       | 420 ST                     |  |

### Custom printing



WS markers are the perfect match for the W-series connectors. Thanks to their system compatibility, the WS tags can also be used with the I-series and the Z-series. The large marking surfaces do not only permit long character strings but also multi-line text. WS markers are ideal for labels with long, customised character strings. Thanks to the proven MultiCard format, printing with PrintJet CONNECT oder/or Plotter is possible.

- Can be fitted in strips or individually
- Markers in proven MultiCard format

For custom printing: Please send us a file of our labeling software M-Print PRO or M-Print PRO Online (without installation) for your labeling specifications.

### General ordering data

|            |                            |  |
|------------|----------------------------|--|
| Type       | WS 12/8 PLUS MC SDR        | Version  |
| Order No.  | <a href="#">1906010000</a> | WS, Terminal marker, 12 x 8 mm, Pitch in mm (P): 8.00 Weidmueller, |
| GTIN (EAN) | 4032248528165              | To customer specification  |
| Qty.       | 84 ST                      |  |

## ZDU 35 BL

**Weidmüller Interface GmbH & Co. KG**  
 Klingenbergstraße 26  
 D-32758 Detmold  
 Germany

## Accessories

www.weidmueller.com

## DEK 5/8



## WS/ DEK

MultiMark terminal markers use an innovative composite material made from two components. The hard base contour of the marker snaps securely into the connector. The elastic surface finish makes the marker easy to mount. This specially punched material enables the strips to be stretched to accommodate the slight variations in spacing that tend to add up, especially with long terminal blocks. Another advantage: the excellent printability of the surface material guarantees durable and wear-resistant labelling. A print resolution of 300 dpi also produces a very legible script.

## Your benefits with MultiMark

- Firm hold and durable printing
- Continuous strips save installation time
- Easy mounting thanks to an innovative composite material
- Large label field for optimal legibility
- High flexibility thanks to manufacturer independence

## General ordering data

|            |                            |         |  |
|------------|----------------------------|---------|--|
| Type       | DEK 5/8 MM WS              | Version |  |
| Order No.  | <a href="#">2007130000</a> |         | Dekafix, Terminal marker, 5 x 8 mm, Weidmueller, white |
| GTIN (EAN) | 4050118392012              |         |  |
| Qty.       | 500 ST                     |         |  |

## Slotted screwdriver



Slotted screwdriver with rounded blade SD DIN 5265, ISO 2380/2, output to DIN 5264, ISO 2380/1. ChromTop tip, SoftFinish grip

## General ordering data

|            |                            |         |   |
|------------|----------------------------|---------|---|
| Type       | SDS 1.0X5.5X150            | Version |   |
| Order No.  | <a href="#">2749380000</a> |         | Screwdriver, Blade width (B): 5.5 mm, Blade length: 150 mm, Blade thickness (A): 1 mm |
| GTIN (EAN) | 4050118895605              |         |   |
| Qty.       | 1 ST                       |         |   |