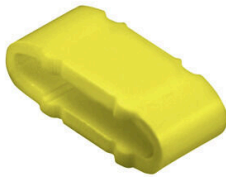


## CLI M 2-4 GE/SW PET. MP

**Weidmüller Interface GmbH & Co. KG**  
Klingenbergstraße 26  
D-32758 Detmold  
Germany

[www.weidmueller.com](http://www.weidmueller.com)



Similar to illustration

CLI M identification markers are slid onto CLI MH carrier strips and secured by means of cable ties. The system is particularly suitable for large conductor and cable cross-sections. Advantages:

- Combination marker for cable and pipe markers
- One size for all diameters above 16 mm<sup>2</sup>
- Unrestricted combination options
- Closed, permanently attached markers
- Very good legibility

### General ordering data

|            |  |
|------------|--|
| Version    | CableLine, Conductor and cable markers, 10 - 317 mm, 4 x 11.3 mm, yellow |
| Order No.  | <a href="#">1733651747</a>   |
| Type       | CLI M 2-4 GE/SW PET. MP  |
| GTIN (EAN) | 4008 190990770   |
| Qty.       | 100 items  |

## CLI M 2-4 GE/SW PET. MP

**Weidmüller Interface GmbH & Co. KG**  
 Klingenbergstraße 26  
 D-32758 Detmold  
 Germany

www.weidmueller.com

## Technical data

### Approvals

|      |         |
|------|---------|
| ROHS | Conform |
|------|---------|

### Dimensions and weights

|            |         |                 |             |
|------------|---------|-----------------|-------------|
| Depth      | 3 mm    | Depth (inches)  | 0.1181 inch |
| Height     | 4 mm    | Height (inches) | 0.1575 inch |
| Width      | 11.3 mm | Width (inches)  | 0.4449 inch |
| Net weight | 0.14 g  |                 |             |

### Temperatures

|                             |             |
|-----------------------------|-------------|
| Operating temperature range | -30...80 °C |
|-----------------------------|-------------|

### Environmental Product Compliance

|                        |                             |
|------------------------|-----------------------------|
| RoHS Compliance Status | Compliant without exemption |
| REACH SVHC             | No SVHC above 0.1 wt%       |

### General data

|  |  |                |
|--|--|----------------|
| Material colour according to resistance code | 4  |                |
| Orientation of print                         | horizontal                                     |                |
| Type of printing                             | Standard                                       |                |
| Printing method                              | hot-embossing                                  |                |
| Version                                      | MultiPack                                      |                |
| Width  | 11.3 mm  |                |
| UL 94 flammability rating                    | V-0  |                |
| Operating temperature range, max.            | 80 °C  |                |
| Operating temperature range, min.            | -30 °C   |                |
| Colour                                       | yellow   |                |
| Halogen                                      | Yes  |                |
| Basic material                               | PVC, soft, without Cadmium                     |                |
| Colour of printing                           | black  |                |
| Printed characters                           | Symbols  |                |
| Number of markers per packaging unit         | Form of supply                                 | Component part |
| Recommended industries                       | Process, Machinery                             |                |
| Number of markers per combination            | 1 Component part = Conductor and cable markers |                |
| Operating temperature range                  | -30...80 °C                                    |                |
| Imprint                                      | PET.   |                |

### Conductor and cable markers

|                                  |                          |                               |                     |
|----------------------------------|--------------------------|-------------------------------|---------------------|
| Halogen                          | Yes                      | Conductor cross-section, max. | 500 mm <sup>2</sup> |
| Conductor cross-section, min.    | 16 mm <sup>2</sup>       | Conductor O.D., max.          | 317 mm              |
| Conductor O.D., min.             | 10 mm                    | Conductor O.D.                | 10 - 317 mm         |
| Cross-section for connected wire | 16 - 500 mm <sup>2</sup> |                               |                     |

### Classifications

|             |             |             |             |
|-------------|-------------|-------------|-------------|
| ETIM 8.0    | EC001530    | ETIM 9.0    | EC001530    |
| ETIM 10.0   | EC001530    | ECLASS 14.0 | 27-28-11-02 |
| ECLASS 15.0 | 27-28-11-02 |             |             |

**CLI M 2-4 GE/SW PET. MP**

**Weidmüller Interface GmbH & Co. KG**  
Klingenbergstraße 26  
D-32758 Detmold  
Germany

[www.weidmueller.com](http://www.weidmueller.com)

**Drawings**



Similar to illustration