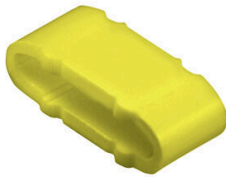


CLI M 2-4 GE/SW + MP

Weidmüller Interface GmbH & Co. KG

Klingenbergstraße 26
D-32758 Detmold
Germany

www.weidmueller.com



Similar to illustration

CLI M identification markers are slid onto CLI MH carrier strips and secured by means of cable ties. The system is particularly suitable for large conductor and cable cross-sections. Advantages:

- Combination marker for cable and pipe markers
- One size for all diameters above 16 mm²
- Unrestricted combination options
- Closed, permanently attached markers
- Very good legibility

General ordering data

Version	CableLine, Conductor and cable markers, 10 - 317 mm, 4 x 11.3 mm, yellow
Order No.	1733651738
Type	CLI M 2-4 GE/SW + MP
GTIN (EAN)	4008 190990732
Qty.	100 items

CLI M 2-4 GE/SW + MP

Weidmüller Interface GmbH & Co. KG
 Klingenbergstraße 26
 D-32758 Detmold
 Germany

www.weidmueller.com

Technical data

Approvals

ROHS Conform

Dimensions and weights

Depth	3 mm	Depth (inches)	0.1181 inch
Height	4 mm	Height (inches)	0.1575 inch
Width	11.3 mm	Width (inches)	0.4449 inch
Net weight	0.12 g		

Temperatures

Operating temperature range -30...80 °C

Environmental Product Compliance

RoHS Compliance Status Compliant without exemption
 REACH SVHC No SVHC above 0.1 wt%

General data

Material colour according to resistance code	4		
Orientation of print	horizontal		
Type of printing	Standard		
Printing method	hot-embossing		
Version	MultiPack		
Width	11.3 mm		
UL 94 flammability rating	V-0		
Operating temperature range, max.	80 °C		
Operating temperature range, min.	-30 °C		
Colour	yellow		
Halogen	Yes		
Basic material	PVC, soft, without Cadmium		
Colour of printing	black		
Printed characters	Symbols		
Number of markers per packaging unit	Form of supply	Component part	
Recommended industries	Process, Machinery		
Number of markers per combination	1 Component part = Conductor and cable markers		
Operating temperature range	-30...80 °C		
Imprint	+		

Conductor and cable markers

Halogen	Yes	Conductor cross-section, max.	500 mm ²
Conductor cross-section, min.	16 mm ²	Conductor O.D., max.	317 mm
Conductor O.D., min.	10 mm	Conductor O.D.	10 - 317 mm
Cross-section for connected wire	16 - 500 mm ²		

Classifications

ETIM 8.0	EC001530	ETIM 9.0	EC001530
ETIM 10.0	EC001530	ECLASS 14.0	27-28-11-02
ECLASS 15.0	27-28-11-02		



Similar to illustration