

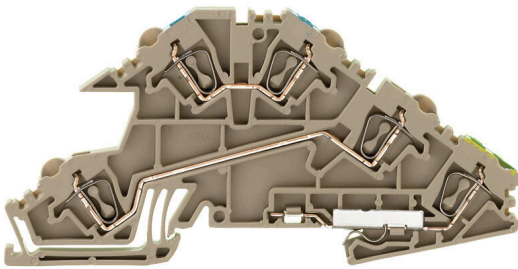
**ZDL 2.5 S/N/L/PE****Weidmüller Interface GmbH & Co. KG**

Klingenbergstraße 26

D-32758 Detmold

Germany

www.weidmueller.com

**Product image****Building installation wiring**

For building installations, we offer a complete system that revolves around the 10×3 copper rail and comprises perfectly coordinated components: from installation terminal blocks, neutral conductor terminal blocks and distribution terminal blocks to comprehensive accessories such as busbars and busbar holders.

**General ordering data**

Version	Z-series, Installation multi-tier terminal, Rated cross-section: 2.5 mm <sup>2</sup> , Tension-clamp connection, dark beige, Direct mounting
Order No.	<a href="#">1720800000</a>
Type	ZDL 2.5 S/N/L/PE
GTIN (EAN)	4008 190380373
Qty.	50 items
Delivery status	Discontinued
Available until	2023-03-31T00:00:00+02:00
Alternative product	<a href="#">AITB 2.5 BB N-L-PE</a>

## ZDL 2.5 S/N/L/PE

**Weidmüller Interface GmbH & Co. KG**  
 Klingenbergstraße 26  
 D-32758 Detmold  
 Germany

www.weidmueller.com

## Technical data

### Approvals

Approvals



ROHS Conform  
 UL File Number Search [UL Website](#)  
 Certificate No. (UR) E60693

### Dimensions and weights

Depth	48 mm	Depth (inches)	1.8898 inch
Height	95 mm	Height (inches)	3.7401 inch
Width	5.1 mm	Width (inches)	0.2008 inch
Net weight	13.86 g		

### Temperatures

Storage temperature	-25 °C...55 °C	Ambient temperature	-5 °C...40 °C
Continuous operating temp., min.	-50 °C	Continuous operating temp., max.	120 °C

### Environmental Product Compliance

RoHS Compliance Status Compliant without exemption  
 REACH SVHC No SVHC above 0.1 wt%

### Material data

Basic material	Wemid	Colour	dark beige
UL 94 flammability rating	V-0		

### System specifications

Version	3-conductor installation terminal, Tension-clamp connection, With PE connection, for plug-in cross-connector, One end without connector	End cover plate required	Yes
Number of potentials	3	Number of levels	2
Number of clamping points per level	2	Number of potentials per tier	1
Levels cross-connected internally	No	PE connection	Yes
Mounting rail	TS 35	N-function	Yes
PE function	Yes	PEN function	No

### Additional technical data

Open sides	right	Installation advice	Direct mounting
Explosion-tested version	No	Type of mounting	Snap-on

### CSA rating data

Wire cross section max. (CSA)	12 AWG	Certificate No. (CSA)	154685-1142891
Voltage size D (CSA)	300 V	Current size D (CSA)	10 A
Wire cross section min. (CSA)	26 AWG		

## ZDL 2.5 S/N/L/PE

**Weidmüller Interface GmbH & Co. KG**  
 Klingenbergstraße 26  
 D-32758 Detmold  
 Germany

www.weidmueller.com

## Technical data

### Conductors for clamping (rated connection)

Gauge to IEC 60947-1	A2	Wire connection cross section AWG, max.	AWG 12
Connection direction	Inclined / angled	Stripping length	8 mm
Type of connection	Tension-clamp connection	Number of connections	5
Clamping range, max.	4 mm <sup>2</sup>	Clamping range, min.	0.13 mm <sup>2</sup>
Blade size	0.6 x 3.5 mm	Wire connection cross section AWG, min.	AWG 26
Wire connection cross-section, finely stranded with wire-end ferrules DIN 46228/4, max.	2.5 mm <sup>2</sup>	Wire connection cross-section, finely stranded with wire-end ferrules DIN 46228/4, min.	0.13 mm <sup>2</sup>
Wire connection cross-section, finely stranded with wire-end ferrules DIN 46228/1, max.	2.5 mm <sup>2</sup>	Wire connection cross-section, finely stranded with wire-end ferrules DIN 46228/1, min.	0.13 mm <sup>2</sup>
Wire connection cross section, finely stranded, max.	4 mm <sup>2</sup>	Wire connection cross section, finely stranded, min.	0.13 mm <sup>2</sup>
Connection cross-section, stranded, min.	0.13 mm <sup>2</sup>	Wire connection cross-section, solid core, max.	4 mm <sup>2</sup>
Wire connection cross-section, solid core, min.	0.13 mm <sup>2</sup>		

### General

Wire connection cross section AWG, max.	AWG 12	Installation advice	Direct mounting
Wire connection cross section AWG, min.	AWG 26	Standards	IEC 60947-7-1 (-7-2)
Mounting rail	TS 35		

### Rating data

Rated cross-section	2.5 mm <sup>2</sup>	Rated voltage	400 V
Rated DC voltage	400 V	Nominal current	24 A
Current at maximum wires	24 A	Standards	IEC 60947-7-1 (-7-2)
Volume resistance according to IEC 60947-7-x	1.33 mΩ	Rated impulse withstand voltage	4 kV
Power loss in accordance with IEC 60947-7-x	0.77 W	Pollution severity	3

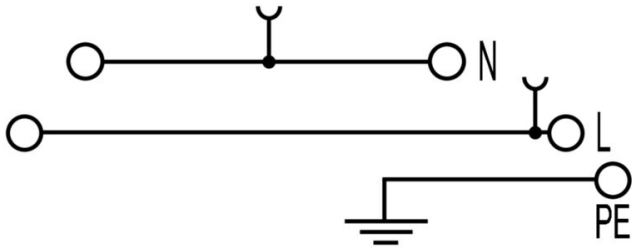
### UL rating data

Voltage size B (UR)	300 V	Current size B (UR)	15 A
Conductor size Factory wiring max. (UR)	12 AWG	Current size D (UR)	10 A
Conductor size Factory wiring min. (UR)	26 AWG	Certificate No. (UR)	E60693
Conductor size Field wiring min. (UR)	26 AWG	Voltage size D (UR)	300 V
Conductor size Field wiring max. (UR)	12 AWG		

### Classifications

ETIM 8.0	EC001329	ETIM 9.0	EC001329
ETIM 10.0	EC001329	ECLASS 14.0	27-25-01-10
ECLASS 15.0	27-25-01-10		

Drawings



## ZDL 2.5 S/N/L/PE

**Weidmüller Interface GmbH & Co. KG**  
 Klingenbergstraße 26  
 D-32758 Detmold  
 Germany

## Accessories

www.weidmueller.com

### Cross-connections



The distribution or multiplication of a potential to adjoining terminal blocks is realized via a cross-connection. Additional wiring effort can be easily avoided. Even if the poles are broken out, contact reliability in the terminal blocks is still ensured. Our portfolio offers pluggable and screwable cross-connection systems for modular terminal blocks.

### General ordering data

Type	ZQV 2.5N/2 GE	Version
Order No.	<a href="#">1693800000</a>	W-Series, Cross-connector, 24 A
GTIN (EAN)	4008190883621	
Qty.	60 ST	
Type	ZQV 2.5N/3 GE	Version
Order No.	<a href="#">1693810000</a>	W-Series, Cross-connector, 24 A
GTIN (EAN)	4008190883645	
Qty.	60 ST	
Type	ZQV 2.5N/4 GE	Version
Order No.	<a href="#">1693820000</a>	W-Series, Cross-connector, 24 A
GTIN (EAN)	4008190883652	
Qty.	60 ST	
Type	ZQV 2.5N/5 GE	Version
Order No.	<a href="#">1693830000</a>	W-Series, Cross-connector, 24 A
GTIN (EAN)	4008190883669	
Qty.	20 ST	
Type	ZQV 2.5N/6 GE	Version
Order No.	<a href="#">1693840000</a>	W-Series, Cross-connector, 24 A
GTIN (EAN)	4008190883676	
Qty.	20 ST	
Type	ZQV 2.5N/7 GE	Version
Order No.	<a href="#">1693850000</a>	W-Series, Cross-connector, 24 A
GTIN (EAN)	4008190883683	
Qty.	20 ST	
Type	ZQV 2.5N/8 GE	Version
Order No.	<a href="#">1693860000</a>	W-Series, Cross-connector, 24 A
GTIN (EAN)	4008190883690	
Qty.	20 ST	
Type	ZQV 2.5N/9 GE	Version
Order No.	<a href="#">1693870000</a>	W-Series, Cross-connector, 24 A
GTIN (EAN)	4008190883706	
Qty.	20 ST	
Type	ZQV 2.5N/10 GE	Version
Order No.	<a href="#">1693880000</a>	W-Series, Cross-connector, 24 A
GTIN (EAN)	4008190883720	
Qty.	20 ST	
Type	ZQV 2.5N/20 GE	Version
Order No.	<a href="#">1909000000</a>	W-Series, Cross-connector, 24 A
GTIN (EAN)	4032248535613	
Qty.	20 ST	

## ZDL 2.5 S/N/L/PE

**Weidmüller Interface GmbH & Co. KG**  
 Klingenbergstraße 26  
 D-32758 Detmold  
 Germany

www.weidmueller.com

## Accessories

Type	ZQV 2.5N/50 GE	Version	
Order No.	<a href="#">1693890000</a>	Version	W-Series, Cross-connector, 24 A
GTIN (EAN)	4008190883737		
Qty.	5 ST		

### End plates and partition plates

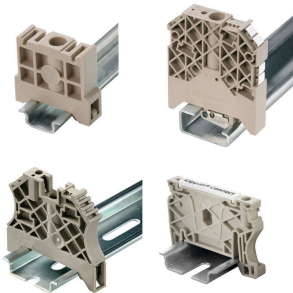


Partition plates and end plates are essential accessories for terminal blocks. Partition plates provide optical and electrical separation of different potentials and functional groups, increasing safety and ensuring a clear structure inside the control cabinet. End plates close the terminal block row on the sides, protect against contact with live parts, and ensure a clean, stable finish. Both components are precisely matched to the respective Weidmüller terminal block series, contributing to safe, compliant, and professional wiring.

#### General ordering data

Type	ZAP ZDL2.5S	Version	
Order No.	<a href="#">1720900000</a>	Version	Z-series, End plate
GTIN (EAN)	4008190381059		
Qty.	20 ST		

### End bracket



Weidmüller's range of products includes end brackets that guarantee a permanent, reliable mounting on the terminal rail and prevent sliding. Versions with and without screws are available. The end brackets include marking options, also for group markers, and also a test plug holder.

#### General ordering data

Type	EW 35	Version	
Order No.	<a href="#">0383560000</a>	Version	End bracket, beige, TS 35, V-2, Wemid, Width: 8.5 mm, 100 °C
GTIN (EAN)	4008190181314		
Qty.	50 ST		
Type	EW 35/SCHA/M3	Version	
Order No.	<a href="#">0258660000</a>	Version	End bracket, beige, TS 35, V-2, Wemid, Width: 16.5 mm, 100 °C
GTIN (EAN)	4008190033477		
Qty.	20 ST		
Type	WEW 35/1	Version	
Order No.	<a href="#">1059000000</a>	Version	End bracket, dark beige, TS 35, V-2, Wemid, Width: 12 mm, 100 °C
GTIN (EAN)	4008190172282		
Qty.	50 ST		
Type	WEW 35/2	Version	
Order No.	<a href="#">1061200000</a>	Version	End bracket, dark beige, TS 35, HB, Wemid, Width: 8 mm, 100 °C
GTIN (EAN)	4008190030230		
Qty.	50 ST		

## ZDL 2.5 S/N/L/PE

**Weidmüller Interface GmbH & Co. KG**  
 Klingenbergstraße 26  
 D-32758 Detmold  
 Germany

www.weidmueller.com

## Accessories

Type	ZEW 35	Version
Order No.	<a href="#">9540000000</a>	End bracket, dark beige, TS 35, V-2, Wemid, Width: 6 mm, 100 °C
GTIN (EAN)	4008190956264	
Qty.	20 ST	
Type	ZEW 35/2	Version
Order No.	<a href="#">8630740000</a>	End bracket, dark beige, TS 35, V-2, Wemid, Width: 8 mm, 100 °C
GTIN (EAN)	4032248348916	
Qty.	20 ST	

## Busbar connections



Weidmüller offers tapping terminals for various types of bus bar systems. Depending on the application, a distinction can be made here between insulated and non-insulated tap-off terminals.

## General ordering data

Type	ZB 4	Version
Order No.	<a href="#">0316500000</a>	Terminal (busbar connection)
GTIN (EAN)	4008190061999	
Qty.	50 ST	
Type	ZB 4G BL	Version
Order No.	<a href="#">0322180000</a>	Terminal (busbar connection)
GTIN (EAN)	4008190050504	
Qty.	50 ST	
Type	ZB 4K GE/GN	Version
Order No.	<a href="#">0475360000</a>	Terminal (busbar connection)
GTIN (EAN)	4008190188047	
Qty.	50 ST	
Type	ZB 4K GG HENSEL	Version
Order No.	<a href="#">1824560000</a>	Terminal (busbar connection)
GTIN (EAN)	4032248330973	
Qty.	50 ST	
Type	ZB 4K SW	Version
Order No.	<a href="#">0475310000</a>	Terminal (busbar connection)
GTIN (EAN)	4008190008406	
Qty.	50 ST	
Type	ZB 4/6	Version
Order No.	<a href="#">0556700000</a>	Terminal (busbar connection)
GTIN (EAN)	4008190188412	
Qty.	50 ST	
Type	ZB 4/6K BL	Version
Order No.	<a href="#">0565480000</a>	Terminal (busbar connection)
GTIN (EAN)	4008190086831	
Qty.	50 ST	

## ZDL 2.5 S/N/L/PE

**Weidmüller Interface GmbH & Co. KG**  
 Klingenbergstraße 26  
 D-32758 Detmold  
 Germany

www.weidmueller.com

## Accessories

Type	ZB 16K BL	Version
Order No.	<a href="#">0502880000</a>	Terminal (busbar connection)
GTIN (EAN)	4008190014186	
Qty.	50 ST	
Type	ZB 4/6K GE/GN	Version
Order No.	<a href="#">0565460000</a>	Terminal (busbar connection)
GTIN (EAN)	4008190032609	
Qty.	50 ST	
Type	ZB 16K GE/GN	Version
Order No.	<a href="#">0502860000</a>	Terminal (busbar connection)
GTIN (EAN)	4008190188795	
Qty.	50 ST	
Type	ZB 16K SW	Version
Order No.	<a href="#">0502810000</a>	Terminal (busbar connection)
GTIN (EAN)	4008190332563	
Qty.	50 ST	
Type	ZB 16 ZKSC	Version
Order No.	<a href="#">0316600000</a>	Terminal (busbar connection)
GTIN (EAN)	4008190145989	
Qty.	50 ST	
Type	ZB 35/M6X16	Version
Order No.	<a href="#">0266500000</a>	Terminal (busbar connection)
GTIN (EAN)	4008190102814	
Qty.	20 ST	
Type	ZB 35K GE/GN M6X16	Version
Order No.	<a href="#">0502660000</a>	Terminal (busbar connection)
GTIN (EAN)	4008190052294	
Qty.	20 ST	
Type	ZB 35K SW M6X16	Version
Order No.	<a href="#">0502610000</a>	Terminal (busbar connection)
GTIN (EAN)	4008190332587	
Qty.	20 ST	

## Busbars



With our bus bars in various materials and the associated accessories, you can connect cables in the smallest installation space. Depending on the application, potentials can be collected, distributed or dissipated.

## General ordering data

Type	SSCH 10X3X1000 CU/SN	Version
Order No.	<a href="#">0348900000</a>	Busbar (terminal), silver, Height: 1000 mm, Depth: 3 mm, Copper
GTIN (EAN)	4008190024802	
Qty.	25 M	

## ZDL 2.5 S/N/L/PE

**Weidmüller Interface GmbH & Co. KG**  
 Klingenbergstraße 26  
 D-32758 Detmold  
 Germany

www.weidmueller.com

## Accessories

### Custom printing



The Dekafix (DEK) marker is the universal marker for all conductor and plug-in connectors as well as for electronic sub-assemblies. The system is ideal for short number sequences and covers a wide range of ready-printed markers.

Strips for fast installation in only one work step. The printing is easy to read, rich in contrast and available in various widths.

- Large range of ready-to-use markers
  - Strips for fast installation
  - Terminal markers, suitable for all Weidmüller cable connectors
  - Available as blank MultiCard or with standard printing
- For custom printing: Please send us a file of our labeling software M-Print PRO or M-Print PRO Online (without installation) for your labeling specifications.

### General ordering data

Type	DEK 5/5 MC SDR	Version	
Order No.	<a href="#">1609810000</a>	Dekafix, Terminal marker, 5 x 5 mm, Pitch in mm (P): 5.00	
GTIN (EAN)	4008190456597	Weidmueller, To customer specification	
Qty.	200 ST		

### Marker holder



The marker holder offer the possibility of additional mounting of standard markers with a pitch of 5 or 5.1 mm. The angled holders can be optionally snapped together and could be mounted in all standard marking channels of the Klippon® Connect modular terminal blocks. Fitting marker types could be found under the respective accessories of the designation marking holder.

### General ordering data

Type	BZT 1 WS 10/5	Version	
Order No.	<a href="#">1805490000</a>	Accessories, Marker holder	
GTIN (EAN)	4032248270231		
Qty.	100 ST		
Type	BZT 1 ZA WS 10/5	Version	
Order No.	<a href="#">1805520000</a>	Accessories, Marker holder	
GTIN (EAN)	4032248270248		
Qty.	100 ST		

## ZDL 2.5 S/N/L/PE

**Weidmüller Interface GmbH & Co. KG**  
Klingenbergstraße 26  
D-32758 Detmold  
Germany

[www.weidmueller.com](http://www.weidmueller.com)

## Accessories

### Slotted screwdriver



VDE insulated screwdriver sets, for working on live parts up to 1000 V AC and 1500 V DC, DIN EN 60900. IEC 900. Each piece is "GS" safety tested. Blade made from fully hardened, high-alloy chromium-vanadium-molybdenum steel, gun-metal finish.

### General ordering data

Type	SDIS SLIM 0.6X3.5X100	Version	
Order No.	<a href="#">2749610000</a>	Mounting tool, Blade width (B): 3.5 mm, Blade length: 100 mm, Blade	
GTIN (EAN)	4050118896350	thickness (A): 0.6 mm	
Qty.	1 ST		