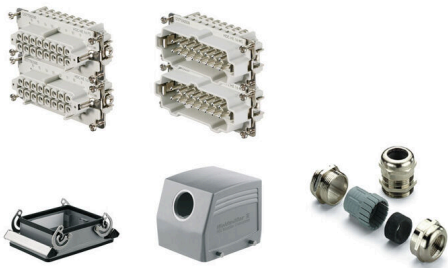


## HDC-KIT-HE 32.140

**Weidmüller Interface GmbH & Co. KG**

Klingenbergstraße 26  
D-32758 Detmold  
Germany

www.weidmueller.com



HDC kits are standardized kits for assembling complete plug-in connectors.

The HDC kits normally consist of a male insert, a female insert, a plug housing, a bulkhead housing and a cable gland.

Weidmüller offers a range of standard connector combinations with metric or PG cable entry threads.

The wire connection level is designed as a screw element. All screw connections are equipped with a wire protection spring.

### General ordering data

Version	RockStar® HDC kits-Heavy-duty connectors, Kit, HE, Installation size: 10, Poles: 32, Screw connection, 500 V, 16 A, diecast aluminium, PG 29
Order No.	<a href="#">1712540000</a>
Type	HDC-KIT-HE 32.140
GTIN (EAN)	4008190947767
Qty.	1 items

## HDC-KIT-HE 32.140

Weidmüller Interface GmbH &amp; Co. KG

Klingenbergstraße 26

D-32758 Detmold

Germany

www.weidmueller.com

## Technical data

## Approvals

Approvals



ROHS Conform

## Dimensions and weights

Net weight 1258.68 g

## Temperatures

Limit temperature -40 °C ... 100 °C

## Environmental Product Compliance

RoHS Compliance Status Compliant with exemption

RoHS Exemption (if applicable/known) 6c

REACH SVHC Lead 7439-92-1, Potassium perfluorobutane sulfonate 29420-49-3

SCIP bfb1c983-6f18-4ba4-8907-38aad6aee076

## General data

Housing main material	diecast aluminium	Surface finish	Powder coating
Protection degree	IP65	Series	HE
EMC housings	No	Material of locking element	Stainless steel, rust-proof

## Version

Size of cable entries	PG 29	Number of cable entry sideways	1
Type of connection	Screw connection	Design of locking system	End-locking clamp, lower side
Installation size	10	Sealing	NBR
Colour (RAL)	RAL 7035	BG	10

## General data

Number of poles	32	Connection type PE	Screw connection
Installation size	10	Cable gland	PG 29
Basic material	diecast aluminium	Series	HE
Rated voltage (DIN EN 61984)	500 V	Rated current (DIN EN 61984)	16 A
BG	10		

## Version

Type of connection	Screw connection	Installation size	10
Conductor cross-section, max.	2.5 mm <sup>2</sup>	Conductor cross-section, min.	0.5 mm <sup>2</sup>
Surface finish	Powder coating	Max. torque for main contact	0.55 Nm
Basic material	diecast aluminium	Min. torque for main contact	0.5 Nm
BG	10		

## Classifications

ETIM 8.0	EC002943	ETIM 9.0	EC002943
ETIM 10.0	EC002943	ECLASS 14.0	27-44-02-92

**Technical data**

---

ECLASS 15.0

27-44-02-92

---

**HDC-KIT-HE 32.140**

**Weidmüller Interface GmbH & Co. KG**  
 Klingenbergstraße 26  
 D-32758 Detmold  
 Germany

www.weidmueller.com

**Accessories**

**HDC COS**

Various accessories are available for our inserts. This includes coding elements for the inserts.



**General ordering data**

Type	HDC COS 16	Version	
Order No.	<a href="#">1431000000</a>	Heavy-duty connectors, Accessories, Coding System	
GTIN (EAN)	4008190052706		
Qty.	1 ST		
Type	HDC COS 24	Version	
Order No.	<a href="#">1430900000</a>	Heavy-duty connectors, Accessories, Coding System	
GTIN (EAN)	4008190077228		
Qty.	1 ST		
Type	HDC COS 32	Version	
Order No.	<a href="#">1430800000</a>	Heavy-duty connectors, Accessories, Coding System	
GTIN (EAN)	4008190176181		
Qty.	1 ST		

**SPB**

Various accessories are available for our inserts. This includes coding elements for the inserts.



**General ordering data**

Type	SPB-M 3	Version	
Order No.	<a href="#">1203600000</a>	Heavy-duty connectors, Accessories, Lock bolts	
GTIN (EAN)	4008190120047		
Qty.	100 ST		