

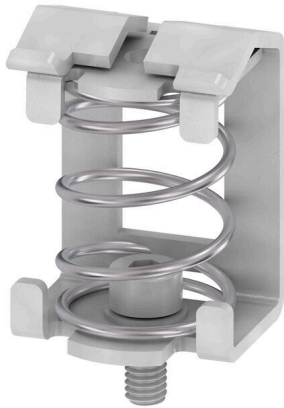
KLBUE 4-13.5 SC**Weidmüller Interface GmbH & Co. KG**

Klingenbergstraße 26

D-32758 Detmold

Germany

www.weidmueller.com



With our wide range of KLBÜ shield connections, you can achieve flexible and self-adjusting shield contacting and ensure error-free plant operation.

General ordering data

| | |
|------------|---|
| Version | Clamping yoke, Clamping yoke for shield connection, Steel |
| Order No. | 1712311001 |
| Type | KLBUE 4-13.5 SC |
| GTIN (EAN) | 4032248032358 |
| Qty. | 10 items |

KLBUE 4-13.5 SC

Weidmüller Interface GmbH & Co. KG

Klingenbergstraße 26

D-32758 Detmold

Germany

www.weidmueller.com

Technical data

Approvals

| | |
|------|---------|
| ROHS | Conform |
|------|---------|

Dimensions and weights

| | | | |
|----------------------------|----------|-----------------|-------------|
| Depth | 31.45 mm | Depth (inches) | 1.2382 inch |
| Height | 22 mm | Height (inches) | 0.8661 inch |
| Width | 20.1 mm | Width (inches) | 0.7913 inch |
| Mounting dimension - width | 18.9 mm | Net weight | 17.3 g |

Temperatures

| | | | |
|----------------------------------|----------------|----------------------------------|---------------|
| Storage temperature | -25 °C...55 °C | Ambient temperature | -5 °C...40 °C |
| Continuous operating temp., min. | -60 °C | Continuous operating temp., max. | 130 °C |

Environmental Product Compliance

| | | | |
|--------------------------|-----------------------------|------------------|--|
| RoHS Compliance Status | Compliant without exemption | | |
| REACH SVHC | No SVHC above 0.1 wt% | | |
| Product Carbon Footprint | Cradle to gate | 0.107 kg CO2 eq. | |

Material data

| | | | |
|---------------------------|-------|--------|--------|
| Basic material | Steel | Colour | silver |
| UL 94 flammability rating | None | | |

System specifications

| | | | |
|---------------|-------------------------|--------------------------|----|
| Version | For a shield connection | End cover plate required | No |
| Mounting rail | Mounting plate | | |

Additional technical data

| | | | |
|--------------------------|---------|---------------------|-----------------|
| Type of fixing | Snap-on | Installation advice | Direct mounting |
| Explosion-tested version | No | Type of mounting | Screw |

Conductors for clamping (rated connection)

| | | | |
|--|-------|--|----------------------|
| Stripping length | 22 mm | Type of connection | Spring connection |
| Number of connections | 1 | Cable diameter, max. | 13.5 mm |
| Cable diameter, min. | 4 mm | Connection cross-section, stranded, max. | 13.5 mm ² |
| Connection cross-section, stranded, min. 4 mm ² | | | |

Dimensions

| | | | |
|------------------|--------|-----------------|----------|
| Length of thread | 5.3 mm | Pitch in mm (P) | 20.00 mm |
|------------------|--------|-----------------|----------|

General

| | | | |
|---------------------|-----------------|---------------|----------------|
| Installation advice | Direct mounting | Mounting rail | Mounting plate |
|---------------------|-----------------|---------------|----------------|

Rating data

| | |
|---------------------|--------------------|
| Rated cross-section | 10 mm ² |
|---------------------|--------------------|

Technical data

Classifications

| | | | |
|-------------|-------------|-------------|-------------|
| ETIM 8.0 | EC002020 | ETIM 9.0 | EC002020 |
| ETIM 10.0 | EC002020 | ECLASS 14.0 | 27-25-01-20 |
| ECLASS 15.0 | 27-25-01-20 | | |

KLBUE 4-13.5 SC

Weidmüller Interface GmbH & Co. KG
Klingenbergstraße 26
D-32758 Detmold
Germany

www.weidmueller.com

Accessories

Mounting support



We offer a broad portfolio of mounting support for easy handling and supplementation of our products. From various tools to insulating sleeves and various screws, our components are matched to each other down to the last detail and thus facilitate assembly in compliance with the respective standards and protective regulations.

General ordering data

| | | | |
|------------|----------------------------|-----------------------|--|
| Type | BTWZ KLBUE | Version | |
| Order No. | 1742630000 | Tools, Operating tool | |
| GTIN (EAN) | 4008190980764 | | |
| Qty. | 1 ST | | |