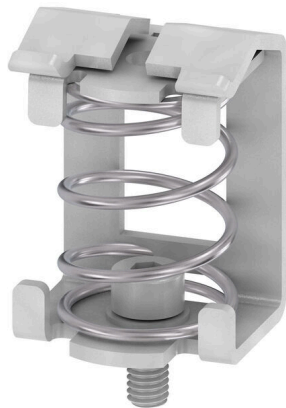


KLBUE 4-13.5 SC**Weidmüller Interface GmbH & Co. KG**

Klingenbergstraße 26

D-32758 Detmold

Germany

www.weidmueller.com

With our wide range of KLBÜ shield connections, you can achieve flexible and self-adjusting shield contacting and ensure error-free plant operation.

General ordering data

Version	Clamping yoke, Clamping yoke for shield connection, Steel
Order No.	1712311001
Type	KLBUE 4-13.5 SC
GTIN (EAN)	4032248032358
Qty.	10 items

KLBUE 4-13.5 SC

Weidmüller Interface GmbH & Co. KG
 Klingenbergstraße 26
 D-32758 Detmold
 Germany

www.weidmueller.com

Technical data

Approvals

ROHS	Conform
------	---------

Dimensions and weights

Depth	31.45 mm	Depth (inches)	1.2382 inch
Height	22 mm	Height (inches)	0.8661 inch
Width	20.1 mm	Width (inches)	0.7913 inch
Mounting dimension - width	18.9 mm	Net weight	17.3 g

Temperatures

Storage temperature	-25 °C...55 °C	Ambient temperature	-5 °C...40 °C
Continuous operating temp., min.	-60 °C	Continuous operating temp., max.	130 °C

Environmental Product Compliance

RoHS Compliance Status	Compliant without exemption		
REACH SVHC	No SVHC above 0.1 wt%		
Product Carbon Footprint	Cradle to gate	0.107 kg CO2 eq.	

Material data

Basic material	Steel	Colour	silver
UL 94 flammability rating	None		

System specifications

Version	For a shield connection	End cover plate required	No
Mounting rail	Mounting plate		

Additional technical data

Type of fixing	Snap-on	Installation advice	Direct mounting
Explosion-tested version	No	Type of mounting	Screw

Conductors for clamping (rated connection)

Stripping length	22 mm	Type of connection	Spring connection
Number of connections	1	Cable diameter, max.	13.5 mm
Cable diameter, min.	4 mm	Connection cross-section, stranded, max.	13.5 mm ²
Connection cross-section, stranded, min. 4 mm ²			

Dimensions

Length of thread	5.3 mm	Pitch in mm (P)	20.00 mm
------------------	--------	-----------------	----------

General

Installation advice	Direct mounting	Mounting rail	Mounting plate
---------------------	-----------------	---------------	----------------

Rating data

Rated cross-section	10 mm ²		
---------------------	--------------------	--	--

Technical data

Classifications

ETIM 8.0	EC002020	ETIM 9.0	EC002020
ETIM 10.0	EC002020	ECLASS 14.0	27-25-01-20
ECLASS 15.0	27-25-01-20		

KLBU 4-13.5 SC**Weidmüller Interface GmbH & Co. KG**

Klingenbergstraße 26

D-32758 Detmold

Germany

www.weidmueller.com**Accessories****Mounting support**

We offer a broad portfolio of mounting support for easy handling and supplementation of our products. From various tools to insulating sleeves and various screws, our components are matched to each other down to the last detail and thus facilitate assembly in compliance with the respective standards and protective regulations.

General ordering data

Type	BTWZ KLBU	Version
Order No.	1742630000	Tools, Operating tool
GTIN (EAN)	4008190980764	
Qty.	1 ST	