

KLBUE 4-13.5 SC

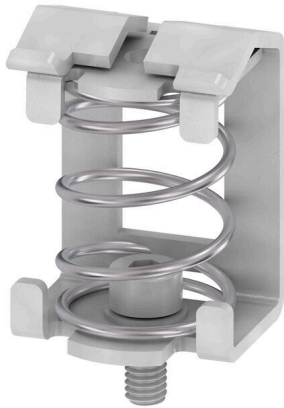
Weidmüller Interface GmbH & Co. KG

Klingenbergstraße 26

D-32758 Detmold

Germany

www.weidmueller.com



With our wide range of KLBÜ shield connections, you can achieve flexible and self-adjusting shield contacting and ensure error-free plant operation.

General ordering data

Version	Clamping yoke, Clamping yoke for shield connection, Steel
Order No.	1712311001
Type	KLBUE 4-13.5 SC
GTIN (EAN)	4032248032358
Qty.	10 items

KLBUE 4-13.5 SC

Weidmüller Interface GmbH & Co. KG

Klingenbergstraße 26

D-32758 Detmold

Germany

www.weidmueller.com

Technical data

Approvals

ROHS	Conform
------	---------

Dimensions and weights

Depth	31.45 mm	Depth (inches)	1.2382 inch
Height	22 mm	Height (inches)	0.8661 inch
Width	20.1 mm	Width (inches)	0.7913 inch
Mounting dimension - width	18.9 mm	Net weight	17.3 g

Temperatures

Storage temperature	-25 °C...55 °C	Ambient temperature	-5 °C...40 °C
Continuous operating temp., min.	-60 °C	Continuous operating temp., max.	130 °C

Environmental Product Compliance

RoHS Compliance Status	Compliant without exemption		
REACH SVHC	No SVHC above 0.1 wt%		
Product Carbon Footprint	Cradle to gate	0.107 kg CO2 eq.	

Material data

Basic material	Steel	Colour	silver
UL 94 flammability rating	None		

System specifications

Version	For a shield connection	End cover plate required	No
Mounting rail	Mounting plate		

Additional technical data

Type of fixing	Snap-on	Installation advice	Direct mounting
Explosion-tested version	No	Type of mounting	Screw

Conductors for clamping (rated connection)

Stripping length	22 mm	Type of connection	Spring connection
Number of connections	1	Cable diameter, max.	13.5 mm
Cable diameter, min.	4 mm	Connection cross-section, stranded, max.	13.5 mm ²
Connection cross-section, stranded, min. 4 mm ²			

Dimensions

Length of thread	5.3 mm	Pitch in mm (P)	20.00 mm
------------------	--------	-----------------	----------

General

Installation advice	Direct mounting	Mounting rail	Mounting plate
---------------------	-----------------	---------------	----------------

Rating data

Rated cross-section	10 mm ²
---------------------	--------------------

Technical data

Classifications

ETIM 8.0	EC002020	ETIM 9.0	EC002020
ETIM 10.0	EC002020	ECLASS 14.0	27-25-01-20
ECLASS 15.0	27-25-01-20		