

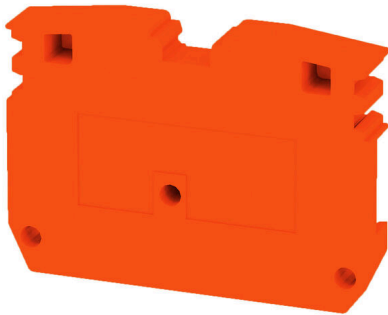
**ZAP ZDUB OR****Weidmüller Interface GmbH & Co. KG**

Klingenbergstraße 26

D-32758 Detmold

Germany

www.weidmueller.com

**Product image**

Partition plates and end plates are essential accessories for terminal blocks. Partition plates provide optical and electrical separation of different potentials and functional groups, increasing safety and ensuring a clear structure inside the control cabinet. End plates close the terminal block row on the sides, protect against contact with live parts, and ensure a clean, stable finish. Both components are precisely matched to the respective Weidmüller terminal block series, contributing to safe, compliant, and professional wiring.

**General ordering data**

Version	Z-series, End plate
Order No.	<a href="#">1704770000</a>
Type	ZAP ZDUB OR
GTIN (EAN)	4008 190948429
Qty.	50 items

## ZAP ZDUB OR

**Weidmüller Interface GmbH & Co. KG**  
 Klingenbergstraße 26  
 D-32758 Detmold  
 Germany

www.weidmueller.com

## Technical data

## Approvals

ROHS	Conform
------	---------

## Dimensions and weights

Depth	24 mm	Depth (inches)	0.9449 inch
Height	33 mm	Height (inches)	1.2992 inch
Width	5 mm	Width (inches)	0.1968 inch
Net weight	2.45 g		

## Temperatures

Storage temperature	-25 °C...55 °C	Ambient temperature	-50 °C...75 °C
Continuous operating temp., min.	-50 °C	Continuous operating temp., max.	120 °C

## Environmental Product Compliance

RoHS Compliance Status	Compliant without exemption		
REACH SVHC	No SVHC above 0.1 wt%		
Product Carbon Footprint	Cradle to gate	0.022 kg CO2eq.	

## Material data

Basic material	Wemid	Colour	orange
UL 94 flammability rating	V-0		

## System specifications

Version	End plate
---------	-----------

## Additional technical data

Snap-on	No	Installation advice	Direct mounting
---------	----	---------------------	-----------------

## General

Installation advice	Direct mounting
---------------------	-----------------

## Classifications

ETIM 8.0	EC000886	ETIM 9.0	EC000886
ETIM 10.0	EC000886	ECLASS 14.0	27-25-03-01
ECLASS 15.0	27-25-03-01		