

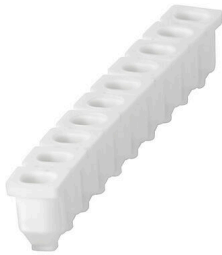
ZRH 1.5H/1**Weidmüller Interface GmbH & Co. KG**

Klingenbergstraße 26

D-32758 Detmold

Germany

www.weidmueller.com

Product image

The use of reducing sleeves simplifies the connection of conductors with smaller cross-sections. Conductors can be reliably inserted into the clamping point without the strands fraying. The use of a reducing sleeve centres the conductor in the entry point.

General ordering data

Version	Z-series, Reducing sleeve
Order No.	1678810000
Type	ZRH 1.5H/1
GTIN (EAN)	4008190487324
Qty.	1000 items
Delivery status	This article will no longer be available in the future.
Available until	2026-06-30T00:00:00+02:00

ZRH 1.5H/1

Weidmüller Interface GmbH & Co. KG
 Klingenbergstraße 26
 D-32758 Detmold
 Germany

www.weidmueller.com

Technical data

Approvals

ROHS Conform

Dimensions and weights

Depth	7.45 mm	Depth (inches)	0.2933 inch
Height	49.3 mm	Height (inches)	1.9409 inch
Width	4.85 mm	Width (inches)	0.1909 inch
Net weight	0.07 g		

Temperatures

Storage temperature	-25 °C...55 °C	Ambient temperature	-50 °C...75 °C
Continuous operating temp., min.	-50 °C	Continuous operating temp., max.	120 °C

Environmental Product Compliance

RoHS Compliance Status	Compliant without exemption
REACH SVHC	No SVHC above 0.1 wt%

Material data

Basic material	Wemid	Colour	grey
UL 94 flammability rating	V-0		

System specifications

Version For the terminals

Additional technical data

Type of fixing	Plugged	Installation advice	Direct mounting
Explosion-tested version	No		

General

Installation advice Direct mounting

Classifications

ETIM 8.0	EC002848	ETIM 9.0	EC002848
ETIM 10.0	EC002848	ECLASS 14.0	27-25-03-90
ECLASS 15.0	27-25-03-90		