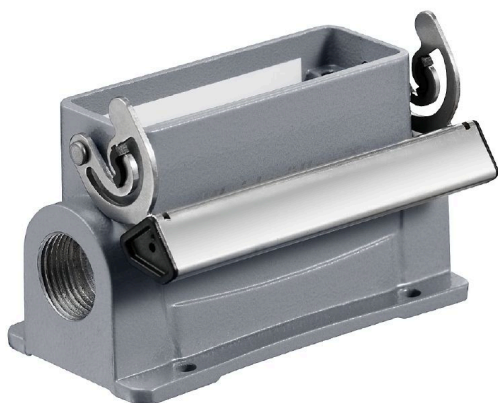


HDC 16A SLU 2PG16G**Weidmüller Interface GmbH & Co. KG**

Klingenbergstraße 26

D-32758 Detmold

Germany

www.weidmueller.com

The special die-cast alloy and the multi-layered surface sealing provide complete protection for the HDC housings.

The cleverly designed interlock system is manufactured from stainless steel. This guarantees a long lifespan with high resistance to corrosion and impact.

The housing interlock system provides integrated safety. Our unique, patented spring system provides the housing interlock with a secure grip and prevents accidental opening.

The laser marking allows for easy and quick identification. Each housing is permanently labelled with a laser marking so that each product can be quickly designated and positioned.

Weidmüller RockStar® IP 65 / NEMA Type 4X housings - your first choice for industrial housings with IP 65 protection.

General ordering data

Version	HDC enclosures, Installation size: 5, Protection degree: IP65, in plugged condition, Base housing, End-locking clamp, lower side, Standard, Size of cable entries: PG 16
Order No.	1665070000
Type	HDC 16A SLU 2PG16G
GTIN (EAN)	4008190421779
Qty.	1 items

HDC 16A SLU 2PG16G

Weidmüller Interface GmbH & Co. KG

Klingenbergstraße 26

D-32758 Detmold

Germany

www.weidmueller.com

Technical data

Approvals

Approvals



ROHS Conform

UL File Number Search [UL Website](#)

Certificate No. (cURus) E92202

Dimensions and weights

Depth	96 mm	Depth (inches)	3.7795 inch
Height	57 mm	Height (inches)	2.2441 inch
Width	62.7 mm	Width (inches)	2.4685 inch
Mounting dimension - height	40 mm	Mounting dimension - width	64 mm
Net weight	218 g		

Temperatures

Limit temperature -40 °C ... 125 °C

Environmental Product Compliance

RoHS Compliance Status Compliant without exemption

REACH SVHC Potassium perfluorobutane sulfonate 29420-49-3

SCIP e98b2b24-ba23-41bf-8d19-0dda3647412f

Chemical resistance	Substance	Acetone
	Chemical resistance	Conditionally resistant
	Substance	Drilling oil
	Chemical resistance	Resistant
	Substance	Diesel
	Chemical resistance	Resistant
	Substance	Ethyl alcohol
	Chemical resistance	Resistant
	Substance	Transmission oil
	Chemical resistance	Resistant
	Substance	Hydraulic oil
	Chemical resistance	Resistant
	Substance	Coolant
	Chemical resistance	Resistant
	Substance	Petroleum benzine
	Chemical resistance	Resistant
	Substance	Sweat
	Chemical resistance	Resistant
	Substance	Premium gasoline
	Chemical resistance	Conditionally resistant
	Substance	Water
	Chemical resistance	Resistant
	Substance	UV
	Chemical resistance	Unstable
	Substance	Ozone
	Chemical resistance	Unstable

HDC 16A SLU 2PG16G

Weidmüller Interface GmbH & Co. KG

Klingenbergstraße 26

D-32758 Detmold

Germany

www.weidmueller.com

Technical data

Dimensions

Hole pitch length A2	64 mm	Cable entry	w. thread
Width housing C	29.5 mm	Width base C1	50 mm
Total length housing	79 mm	Height of housing B	57 mm
Height of base B1	4 mm		

General data

Tightening torque	0.5 Nm	Housing main material	diecast aluminium
Surface finish	Powder coating	Protection degree	IP65, in plugged condition
EMC housings	No	Material of locking element	Stainless steel, rust-proof

Version

Size of cable entries	PG 16	Top part/bottom part/lid	lower part
Tightening torque	0.5 Nm	Number of cable entry on top	0
Number of cable entry sideways	2	Design of housing	Base housing
Design of locking system	End-locking clamp, lower side	Design	Standard
Installation size	5	Cable entry	w. thread
Type	Base housing	Clamp version	End-locking clamp
Internal thread	PG 16	Colour (RAL)	RAL 7035
BG	5	Suitable for ModuPlug®	No

Classifications

ETIM 6.0	EC000437	ETIM 7.0	EC000437
ETIM 8.0	EC000437	ETIM 9.0	EC000437
ETIM 10.0	EC000437	ECLASS 9.0	27-44-02-02
ECLASS 9.1	27-44-02-02	ECLASS 10.0	27-44-02-02
ECLASS 11.0	27-44-02-02	ECLASS 12.0	27-44-02-02
ECLASS 13.0	27-44-02-02	ECLASS 14.0	27-44-02-02
ECLASS 15.0	27-44-02-02		