**IP65**

The special die-cast alloy and the multi-layered surface sealing provide complete protection for the HDC housings.

The cleverly designed interlock system is manufactured from stainless steel. This guarantees a long lifespan with high resistance to corrosion and impact.

The housing interlock system provides integrated safety. Our unique, patented spring system provides the housing interlock with a secure grip and prevents accidental opening.

The laser marking allows for easy and quick identification. Each housing is permanently labelled with a laser marking so that each product can be quickly designated and positioned.

Weidmüller RockStar® IP 65 / NEMA Type 4X housings - your first choice for industrial housings with IP 65 protection.

General ordering data

Version	HDC enclosures, Installation size: 2, Protection degree: IP65, in plugged condition, Bulkhead housing, End-locking clamp, lower side, Standard
Order No.	1664040000
Type	HDC 10A ALU
GTIN (EAN)	4008190420734
Qty.	1 items

Technical data

Approvals

Approvals



ROHS	Conform
------	---------

UL File Number Search	UL Website
-----------------------	----------------------------

Certificate No. (cURus)	E92202
-------------------------	--------

Dimensions and weights

Depth	84 mm	Depth (inches)	3.3071 inch
Height	26 mm	Height (inches)	1.0236 inch
Width	54 mm	Width (inches)	2.126 inch
Mounting dimension - height	18 mm	Mounting dimension - width	70 mm
Net weight	76.56 g		

Temperatures

Limit temperature	-40 °C ... 125 °C
-------------------	-------------------

Environmental Product Compliance

RoHS Compliance Status	Compliant without exemption
------------------------	-----------------------------

REACH SVHC	Potassium perfluorobutane sulfonate 29420-49-3
------------	--

SCIP	e98b2b24-ba23-41bf-8d19-0dda3647412f
------	--------------------------------------

Chemical resistance	Substance	Acetone
	Chemical resistance	Conditionally resistant
	Substance	Drilling oil
	Chemical resistance	Resistant
	Substance	Diesel
	Chemical resistance	Resistant
	Substance	Ethyl alcohol
	Chemical resistance	Resistant
	Substance	Transmission oil
	Chemical resistance	Resistant
	Substance	Hydraulic oil
	Chemical resistance	Resistant
	Substance	Coolant
	Chemical resistance	Resistant
	Substance	Petroleum benzine
	Chemical resistance	Resistant
	Substance	Sweat
	Chemical resistance	Resistant
	Substance	Premium gasoline
	Chemical resistance	Conditionally resistant
	Substance	Water
	Chemical resistance	Resistant
	Substance	UV
	Chemical resistance	Unstable
	Substance	Ozone
	Chemical resistance	Unstable

HDC 10A ALU

Weidmüller Interface GmbH & Co. KG

Klingenbergstraße 26

D-32758 Detmold

Germany

www.weidmueller.com

Technical data

Dimensions

Hole pitch length A2	70 mm	Width housing C	30 mm
Width base C1	32 mm	Total length housing	63 mm
Height of housing B	26 mm	Height of base B1	5 mm

General data

Tightening torque	0.5 Nm	Housing main material	diecast aluminium
Surface finish	Powder coating	Protection degree	IP65, in plugged condition
EMC housings	No	Material of locking element	Stainless steel, rust-proof

Version

Top part/bottom part/lid	lower part	Cover	without cover
Tightening torque	0.5 Nm	Design of housing	Bulkhead housing
Design of locking system	End-locking clamp, lower side	Design	Standard
Installation size	2	Type	Bulkhead (feed-through)
Clamp version	End-locking clamp	Sealing	NBR
Colour (RAL)	RAL 7035	BG	2
Suitable for ModuPlug®	No		

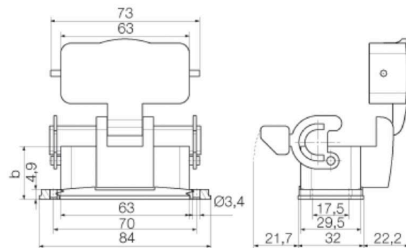
Important note

Product information	When mounting the housings, make sure that the flat gasket is correctly seated.
---------------------	---

Classifications

ETIM 6.0	EC000437	ETIM 7.0	EC000437
ETIM 8.0	EC000437	ETIM 9.0	EC000437
ETIM 10.0	EC000437	ECLASS 9.0	27-44-02-02
ECLASS 9.1	27-44-02-02	ECLASS 10.0	27-44-02-02
ECLASS 11.0	27-44-02-02	ECLASS 12.0	27-44-02-02
ECLASS 13.0	27-44-02-02	ECLASS 14.0	27-44-02-02
ECLASS 15.0	27-44-02-02		

Drawings



Accessories**Cover**

The special die-cast alloy and the multi-layered surface sealing provide complete protection for the HDC housings.

The cleverly designed interlock system is manufactured from stainless steel. This guarantees a long lifespan with high resistance to corrosion and impact.

The housing interlock system provides integrated safety. Our unique, patented spring system provides the housing interlock with a secure grip and prevents accidental opening.

The laser marking allows for easy and quick identification. Each housing is permanently labelled with a laser marking so that each product can be quickly designated and positioned.

Weidmüller RockStar® IP 65 / NEMA Type 4X housings - your first choice for industrial housings with IP 65 protection.

General ordering data

Type	HDC 10A DMDL 2B0	Version
Order No.	1665880000	HDC enclosures, Installation size: 2, Protection degree: IP65, in
GTIN (EAN)	4008190422912	plugged condition, Cover for lower part of housing, End-locking
Qty.	1 ST	clamp, lower side, Standard