

**HDC-C-HD-SM0.75-1.00AU****Weidmüller Interface GmbH & Co. KG**

Klingenbergstraße 26

D-32758 Detmold

Germany

www.weidmueller.com



Crimps provide a electrical and mechanical connection between wire and contact that is both secure and reliable. The optimal crimp connection is gas-tight and corrosion-resistant.

**General ordering data**

Version	Heavy-duty connectors, Crimp contact, HD, HDD, HQ, MixMate, Male, Conductor cross-section, max.: 1, turned, Copper alloy
Order No.	<a href="#">1651640000</a>
Type	HDC-C-HD-SM0.75-1.00AU
GTIN (EAN)	4008190400316
Qty.	100 items

## HDC-C-HD-SM0.75-1.00AU

**Weidmüller Interface GmbH & Co. KG**  
 Klingenbergstraße 26  
 D-32758 Detmold  
 Germany

www.weidmueller.com

## Technical data

## Approvals

Approvals



ROHS Conform

UL File Number Search [UL Website](#)

Certificate No. (cURus) E92202

## Dimensions and weights

Diameter	3.2 mm	Net weight	0.62 g
----------	--------	------------	--------

## Environmental Product Compliance

RoHS Compliance Status Compliant with exemption

RoHS Exemption (if applicable/known) 6c

REACH SVHC Lead 7439-92-1

SCIP 6eabd5ae-2d6b-409e-8bdf-87c27ee10e40

## General data

Contact diameter, male Ø	1.6 mm	Stripping length, rated connection	8 mm
Type of connection	Crimp connection	Version insert	HD, HDD, HQ, MixMate
Volume resistance	≤4 mΩ	Conductor cross-section, max.	1 mm <sup>2</sup>
Conductor cross-section, min.	0.75 mm <sup>2</sup>	Surface finish	gold
Plugging cycles	≥ 500	Type	Male
Basic material	Copper alloy	Series	HD
Production methods	turned	Cross-section for connected wire	0.75 - 1 mm <sup>2</sup>
Material of contact	Copper alloy		

## Classifications

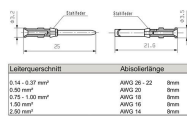
ETIM 8.0	EC000796	ETIM 9.0	EC000796
ETIM 10.0	EC000796	ECLASS 14.0	27-44-02-04
ECLASS 15.0	27-44-02-04		

**HDC-C-HD-SM0.75-1.00AU**

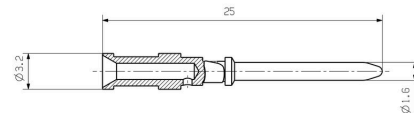
**Weidmüller Interface GmbH & Co. KG**  
 Klingenbergstraße 26  
 D-32758 Detmold  
 Germany

**Drawings**

[www.weidmueller.com](http://www.weidmueller.com)



Leiterquerschnitt	Abisolierlänge	
0.14 - 0.37 mm <sup>2</sup>	AWG 26 - 22	8mm
0.50 mm <sup>2</sup>	AWG 20	8mm
0.75 - 1.00 mm <sup>2</sup>	AWG 18	8mm
1.50 mm <sup>2</sup>	AWG 16	8mm
2.50 mm <sup>2</sup>	AWG 14	8mm



## HDC-C-HD-SM0.75-1.00AU

**Weidmüller Interface GmbH & Co. KG**  
 Klingenbergstraße 26  
 D-32758 Detmold  
 Germany

www.weidmueller.com

## Accessories

### Crimping tools



Crimping tools for turned contacts

- Ratchet guarantees precise crimping
- Release option in the event of incorrect operation
- With stop for exact positioning of the contacts.

### General ordering data

Type	CTX CM 1.6/2.5	Version	
Order No.	<a href="#">9018490000</a>	Pressing tool, Crimping tool for contacts, 0.14mm <sup>2</sup> , 4mm <sup>2</sup> , W crimp	
GTIN (EAN)	4008190884598		
Qty.	1 ST		
Type	CTIN CM 1.6/2.5	Version	
Order No.	<a href="#">9205430000</a>	Pressing tool, Crimping tool for contacts, 0.14mm <sup>2</sup> , 6mm <sup>2</sup> , 4-indent crimp	
GTIN (EAN)	4032248733446		
Qty.	1 ST		

### Contact removal tools



Weidmüller offers a variety of crimping tools, contact removal tools, and fibre optic tools.

### General ordering data

Type	REMOVAL TOOL HD	Version	
Order No.	<a href="#">1866730000</a>	Tools, Contact Removal Tool	
GTIN (EAN)	4032248437054		
Qty.	1 ST		

## HDC-C-HD-SM0.75-1.00AU

**Weidmüller Interface GmbH & Co. KG**  
 Klingenbergstraße 26  
 D-32758 Detmold  
 Germany

www.weidmueller.com

## Accessories

### 4/2-pole



The HQ series - big features in a compact design. The electrical characteristics speak for themselves. You can also use the proven HD and HX crimp contacts here. The wire connection level is designed for crimp contacts. The proven crimp connection has been in standard use for decades.

Crimp contacts are not included in the scope of delivery of inserts.

Pole count: 4/2 (+PE)

Rated current: 40/10 A

Rated voltage: 690 / 250 V

Rated voltage acc. to UL/CSA: 600 V AC/DC

### General ordering data

Type	HDC HQ 4/2 FC	Version
Order No.	<a href="#">1003160000</a>	HDC insert, Female, 690 V, 40 A, Number of poles: 6, Crimp connection, Installation size: HQ
GTIN (EAN)	4032248698158	
Qty.	1 ST	
Type	HDC HQ 4/2 MC	Version
Order No.	<a href="#">1003170000</a>	HDC insert, Male, 690 V, 40 A, Number of poles: 6, Crimp connection, Installation size: HQ
GTIN (EAN)	4032248698165	
Qty.	1 ST	