

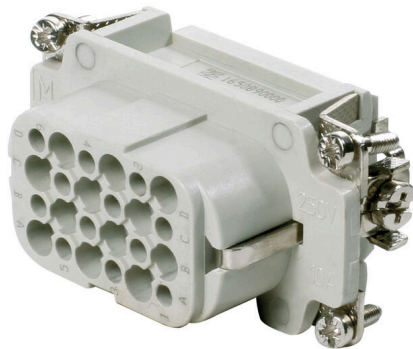
**HDC HD 24 FC****Weidmüller Interface GmbH & Co. KG**

Klingenbergstraße 26

D-32758 Detmold

Germany

www.weidmueller.com



The HD range features a high density of contacts. It is thus optimally suited for signal processing.  
The wire connection level is designed as a crimp contact. The established crimp connection has been used as a standard for decades.  
Crimp contacts are not delivered with the inserts.  
Number of poles: 24  
Rated current: 10 A  
Rated voltage: 250 V  
Nominal voltage acc. to UL/CSA: 600 V AC/DC

**General ordering data**

Version	HDC insert, Female, 250 V, 10 A, Number of poles: 24, Crimp connection, Installation size: 4
Order No.	<a href="#">1650890000</a>
Type	HDC HD 24 FC
GTIN (EAN)	4008190299491
Qty.	1 items
Delivery status	This article will no longer be available in the future.
Available until	2022-12-31T00:00:00+01:00
Alternative product	<a href="#">HDC HDD 42 FC</a>

Technical data

Approvals

Approvals



ROHS Conform

Dimensions and weights

Height	35 mm	Height (inches)	1.378 inch
Width	34 mm	Width (inches)	1.3386 inch
Length	64 mm	Length (inches)	2.5197 inch
Net weight	50 g		

Temperatures

Limit temperature -40 °C ... 125 °C

Environmental Product Compliance

RoHS Compliance Status	Compliant without exemption
REACH SVHC	Potassium perfluorobutane sulfonate 29420-49-3
SCIP	2f94735a-9fba-4903-842f-4fb9aa902310

Chemical resistance	Substance	Acetone
	Chemical resistance	Resistant
	Substance	Ammonia, watery
	Chemical resistance	Conditionally resistant
	Substance	Petrol
	Chemical resistance	Resistant
	Substance	Benzene
	Chemical resistance	Resistant
	Substance	Diesel oil
	Chemical resistance	Conditionally resistant
	Substance	Acetic acid, concentrated
	Chemical resistance	Resistant
	Substance	Potassium hydroxide
	Chemical resistance	Conditionally resistant
	Substance	Methanol
	Chemical resistance	Conditionally resistant
	Substance	Motor oil
	Chemical resistance	Conditionally resistant
	Substance	Lye, diluted
	Chemical resistance	Resistant
Substance	Hydrochlorofluorocarbons	
Chemical resistance	Conditionally resistant	
Substance	Outdoor use	
Chemical resistance	Conditionally resistant	

Dimensions

Width	34 mm	Total length base	64 mm
Height of socket	35 mm		

General data

Number of poles 24

## HDC HD 24 FC

**Weidmüller Interface GmbH & Co. KG**

Klingenbergstraße 26  
D-32758 Detmold  
Germany

[www.weidmueller.com](http://www.weidmueller.com)

## Technical data

Plugging cycles, silver	≥ 500	
Plugging cycles, gold	≥ 500	
Type of connection	Crimp connection	
Installation size	4	
UL 94 flammability rating	V-0	
Volume resistance	≤4 mΩ	
Colour	beige	
Insulation resistance	1010 Ω	
Insulating material	PC glass-fibre reinforced (UL-listed and railway-certified)	
Insulating material group	IIIa	
Conductor cross-section	2.5 mm <sup>2</sup>	
Type	Female	
Pollution severity	3	
Basic material	Copper alloy	
Series	HD	
Rated voltage (DIN EN 61984)	250 V	
Rated voltage according to UL/CSA	600 V AC/DC	
Rated impulse voltage (DIN EN 61984)	4 kV	
Rated current (DIN EN 61984)	10 A	
Rated current (UR)	Wire connection cross section AWG	AWG 14
	Rated current	10 A
	Wire connection cross section AWG	AWG 16
	Rated current	7 A
	Wire connection cross section AWG	AWG 18
	Rated current	7 A
	Wire connection cross section AWG	AWG 20
	Rated current	2.75 A
	Wire connection cross section AWG	AWG 22
	Rated current	2.75 A
	Wire connection cross section AWG	AWG 24
	Rated current	2.75 A
Rated current (cUR)	Wire connection cross section AWG	AWG 14
	Rated current	10 A
	Wire connection cross section AWG	AWG 16
	Rated current	7 A
	Wire connection cross section AWG	AWG 18
	Rated current	7 A
	Wire connection cross section AWG	AWG 20
	Rated current	2.75 A
	Wire connection cross section AWG	AWG 22
	Rated current	2.75 A
	Wire connection cross section AWG	AWG 24
	Rated current	2.75 A
Free from halogens	true	
Low smoke acc. DIN EN 45545-2	Yes	
BG	4	
Number of signal contacts	0	
Number of power contacts	24	

## Connection data PE

Connection type PE	Screw connection	Blade size, slotted (PE connection)	SD 0.6 x 3.5, SD 0.8 x 4.0
Stripping length PE connection	10 mm	Tightening torque, max. PE connection	1.5 Nm
Tightening torque, min. PE connection	1.2 Nm	Fixing screw	M 4
Rated cross-section	2.5 mm <sup>2</sup>	Wire cross section, AWG (PE), min.	AWG 20
Wire cross section, AWG (PE), max.	AWG 14		

## Technical data

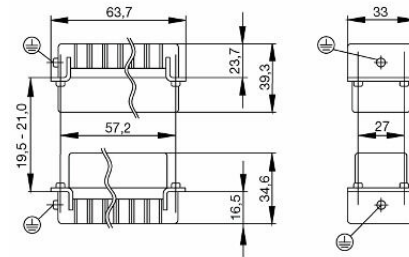
### Version

Wire connection cross section AWG, max.	AWG 14	Stripping length, rated connection	8 mm
Type of connection	Crimp connection	Installation size	4
Volume resistance	≤4 mΩ	Wire connection cross section AWG, min.	AWG 26
Wire cross-section, solid, max.	2.5 mm <sup>2</sup>	Wire cross-section, solid, min.	0.5 mm <sup>2</sup>
Wire connection cross section, finely stranded, max.	2.5 mm <sup>2</sup>	Wire connection cross section, finely stranded, min.	0.5 mm <sup>2</sup>
Conductor cross-section, max.	2.5 mm <sup>2</sup>	Conductor cross-section, min.	0.14 mm <sup>2</sup>
Basic material	Copper alloy	BG	4

### Classifications

ETIM 8.0	EC000438	ETIM 9.0	EC000438
ETIM 10.0	EC000438	ECLASS 14.0	27-44-02-05
ECLASS 15.0	27-44-02-05		

Drawings



**HDC HD 24 FC**

**Weidmüller Interface GmbH & Co. KG**  
 Klingenbergstraße 26  
 D-32758 Detmold  
 Germany

www.weidmueller.com

**Accessories**

**DSTV**



Various accessories are available for our inserts. This includes coding elements for the inserts.

**General ordering data**

Type	DSTV COST4	Version
Order No.	<a href="#">1471300000</a>	Heavy-duty connectors, Accessories, Coding System
GTIN (EAN)	4008190017354	
Qty.	100 ST	

Type	DSTV COBU5	Version
Order No.	<a href="#">1471500000</a>	Heavy-duty connectors, Accessories, Coding element
GTIN (EAN)	4008190178543	
Qty.	100 ST	

**Slotted screwdriver**



VDE insulated slot-head screwdriver, SDI DIN 7437, ISO 2380/2, drive grip output acc. to DIN 5264, ISO 2380/1. SoftFinish grip

**General ordering data**

Type	SDIS 0.6X3.5X100	Version
Order No.	<a href="#">9008390000</a>	Screwdriver, Screwdriver
GTIN (EAN)	4032248056354	
Qty.	1 ST	

Type	SDS 0.6X3.5X100	Version
Order No.	<a href="#">9008330000</a>	Screwdriver, Screwdriver
GTIN (EAN)	4032248056286	
Qty.	1 ST	

Type	SDIS 0.8X4.0X100	Version
Order No.	<a href="#">9008400000</a>	Screwdriver, Screwdriver
GTIN (EAN)	4032248056361	
Qty.	1 ST	

Type	SDS 0.8X4.0X100	Version
Order No.	<a href="#">9008340000</a>	Screwdriver, Screwdriver
GTIN (EAN)	4032248056293	
Qty.	1 ST	

## HDC HD 24 FC

**Weidmüller Interface GmbH & Co. KG**  
 Klingenbergstraße 26  
 D-32758 Detmold  
 Germany

www.weidmueller.com

## Accessories

## Crosshead screwdriver Pozidriv



VDE insulated crosshead screwdriver type Pozidriv SDIK PZ DIN 7438, ISO 8764/2-PZ, output to ISO 8764-PZ, SoftFinish grip

## General ordering data

Type	SDIK PZ 1	Version	
Order No.	<a href="#">9008900000</a>	Screwdriver, Screwdriver	
GTIN (EAN)	4032248266685		
Qty.	1 ST		
Type	SDK PZ 1	Version	
Order No.	<a href="#">9008530000</a>	Screwdriver, Screwdriver	
GTIN (EAN)	4032248056521		
Qty.	1 ST		

## Crimping tools



Crimping tools for turned contacts

- Ratchet guarantees precise crimping
- Release option in the event of incorrect operation
- With stop for exact positioning of the contacts.

## General ordering data

Type	CTX CM 1.6/2.5	Version	
Order No.	<a href="#">9018490000</a>	Pressing tool, Crimping tool for contacts, 0.14mm <sup>2</sup> , 4mm <sup>2</sup> , W crimp	
GTIN (EAN)	4008190884598		
Qty.	1 ST		
Type	CTIN CM 1.6/2.5	Version	
Order No.	<a href="#">9205430000</a>	Pressing tool, Crimping tool for contacts, 0.14mm <sup>2</sup> , 6mm <sup>2</sup> , 4-indent crimp	
GTIN (EAN)	4032248733446		
Qty.	1 ST		

## HDC HD 24 FC

**Weidmüller Interface GmbH & Co. KG**  
 Klingenbergstraße 26  
 D-32758 Detmold  
 Germany

www.weidmueller.com

## Accessories

### Contact removal tools



Weidmüller offers a variety of crimping tools, contact removal tools, and fibre optic tools.

#### General ordering data

Type	REMOVAL TOOL HD	Version
Order No.	<a href="#">1866730000</a>	Tools, Contact Removal Tool
GTIN (EAN)	4032248437054	
Qty.	1 ST	

### Crimp contacts HD



Crimps provide a electrical and mechanical connection between wire and contact that is both secure and reliable. The optimal crimp connection is gas-tight and corrosion-resistant.

#### General ordering data

Type	HDC-C-HD-BM0.14-0.37AG	Version
Order No.	<a href="#">1651570000</a>	Heavy-duty connectors, Crimp contact, HD, HDD, HQ, MixMate, Female, Conductor cross-section, max.: 0.37, turned, Copper alloy
GTIN (EAN)	4008190400248	
Qty.	100 ST	
Type	HDC-C-HD-BM0.5AG	Version
Order No.	<a href="#">1651580000</a>	Heavy-duty connectors, Crimp contact, HD, HDD, HQ, MixMate, Female, Conductor cross-section, max.: 0.5, turned, Copper alloy
GTIN (EAN)	4008190400255	
Qty.	100 ST	
Type	HDC-C-HD-BM0.75-1.00AG	Version
Order No.	<a href="#">1601760000</a>	Heavy-duty connectors, Crimp contact, HD, HDD, HQ, MixMate, Female, Conductor cross-section, max.: 1, turned, Copper alloy
GTIN (EAN)	4008190158354	
Qty.	100 ST	
Type	HDC-C-HD-BM1.5AG	Version
Order No.	<a href="#">1651600000</a>	Heavy-duty connectors, Crimp contact, HD, HDD, HQ, MixMate, Female, Conductor cross-section, max.: 1.5, turned, Copper alloy
GTIN (EAN)	4008190400279	
Qty.	100 ST	
Type	HDC-C-HD-BM2.5AG	Version
Order No.	<a href="#">1651610000</a>	Heavy-duty connectors, Crimp contact, HD, HDD, HQ, MixMate, Female, Conductor cross-section, max.: 2.5, turned, Copper alloy
GTIN (EAN)	4008190400286	
Qty.	100 ST	

## HDC HD 24 FC

**Weidmüller Interface GmbH & Co. KG**  
 Klingenbergstraße 26  
 D-32758 Detmold  
 Germany

www.weidmueller.com

## Accessories

Type	HDC-C-HD-BM0.14-0.37AU	Version
Order No.	<a href="#">1651670000</a>	Heavy-duty connectors, Crimp contact, HD, HDD, HQ, MixMate,
GTIN (EAN)	4008190400347	Female, Conductor cross-section, max.: 0.37, turned, Copper alloy
Qty.	100 ST	
Type	HDC-C-HD-BM0.5AU	Version
Order No.	<a href="#">1651680000</a>	Heavy-duty connectors, Crimp contact, HD, HDD, HQ, MixMate,
GTIN (EAN)	4008190400354	Female, Conductor cross-section, max.: 0.5, turned, Copper alloy
Qty.	100 ST	
Type	HDC-C-HD-BM0.75-1.00AU	Version
Order No.	<a href="#">1651690000</a>	Heavy-duty connectors, Crimp contact, HD, HDD, HQ, MixMate,
GTIN (EAN)	4008190400361	Female, Conductor cross-section, max.: 1, turned, Copper alloy
Qty.	100 ST	
Type	HDC-C-HD-BM1.5AU	Version
Order No.	<a href="#">1651700000</a>	Heavy-duty connectors, Crimp contact, HD, HDD, HQ, MixMate,
GTIN (EAN)	4008190400378	Female, Conductor cross-section, max.: 1.5, turned, Copper alloy
Qty.	100 ST	
Type	HDC-C-HD-BM2.5AU	Version
Order No.	<a href="#">1651710000</a>	Heavy-duty connectors, Crimp contact, HD, HDD, HQ, MixMate,
GTIN (EAN)	4008190400385	Female, Conductor cross-section, max.: 2.5, turned, Copper alloy
Qty.	100 ST	