

HDC HD 15 FC

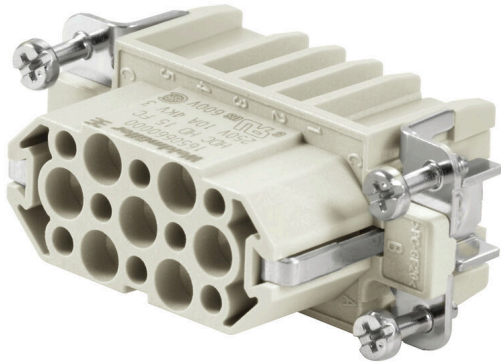
Weidmüller Interface GmbH & Co. KG

Klingenbergstraße 26

D-32758 Detmold

Germany

www.weidmueller.com



The HD range features a high density of contacts. It is thus optimally suited for signal processing.
The wire connection level is designed as a crimp contact. The established crimp connection has been used as a standard for decades.

Crimp contacts are not delivered with the inserts.

Number of poles: 15

Rated current: 10 A

Rated voltage: 250 V

Nominal voltage acc. to UL/CSA: 600 V AC/DC

General ordering data

Version	HDC insert, Female, 250 V, 10 A, Number of poles: 15, Crimp connection, Installation size: 2
Order No.	1650660000
Type	HDC HD 15 FC
GTIN (EAN)	4008190299330
Qty.	1 items

Technical data

Approvals

Approvals



ROHS	Conform
UL File Number Search	UL Website
Certificate No. (cURus)	E92202

Dimensions and weights

Depth	56.6 mm	Depth (inches)	2.2283 inch
Height	33.8 mm	Height (inches)	1.3307 inch
Width	23 mm	Width (inches)	0.9055 inch
Net weight	25.52 g		

Temperatures

Limit temperature	-40 °C ... 125 °C
-------------------	-------------------

Environmental Product Compliance

RoHS Compliance Status	Compliant without exemption
REACH SVHC	Potassium perfluorobutane sulfonate 29420-49-3
SCIP	1609748e-c278-4c9b-b3d1-e6215d2988cd

Chemical resistance	Substance	Acetone
	Chemical resistance	Resistant
	Substance	Ammonia, watery
	Chemical resistance	Conditionally resistant
	Substance	Petrol
	Chemical resistance	Resistant
	Substance	Benzene
	Chemical resistance	Resistant
	Substance	Diesel oil
	Chemical resistance	Conditionally resistant
	Substance	Acetic acid, concentrated
	Chemical resistance	Resistant
	Substance	Potassium hydroxide
	Chemical resistance	Conditionally resistant
	Substance	Methanol
	Chemical resistance	Conditionally resistant
	Substance	Motor oil
	Chemical resistance	Conditionally resistant
Substance	Lye, diluted	
Chemical resistance	Resistant	
Substance	Hydrochlorofluorocarbons	
Chemical resistance	Conditionally resistant	
Substance	Outdoor use	
Chemical resistance	Conditionally resistant	

Dimensions

Width	23 mm	Total length base	56.5 mm
Height of socket	33.8 mm		

HDC HD 15 FC

Weidmüller Interface GmbH & Co. KG

Klingenbergstraße 26

D-32758 Detmold

Germany

www.weidmueller.com

Technical data

General data

Number of poles	15		
Plugging cycles, silver	≥ 500		
Plugging cycles, gold	≥ 500		
Type of connection	Crimp connection		
Installation size	2		
UL 94 flammability rating	V-0		
Volume resistance	≤4 mΩ		
Colour	beige		
Insulation resistance	1010 Ω		
Insulating material	PC glass-fibre reinforced (UL-listed and railway-certified)		
Insulating material group	IIIa		
Conductor cross-section	2.5 mm ²		
Tightening torque, max. PE connection	1.5 Nm		
Type	Female		
Pollution severity	3		
Tightening torque, min. PE connection	1.2 Nm		
Basic material	Copper alloy		
Series	HD		
Rated voltage (DIN EN 61984)	250 V		
Rated voltage according to UL/CSA	600 V AC/DC		
Rated impulse voltage (DIN EN 61984)	4 kV		
Rated current (DIN EN 61984)	10 A		
Rated current (UR)	Wire connection cross section AWG	AWG 14	
	Rated current	10 A	
	Wire connection cross section AWG	AWG 16	
	Rated current	7 A	
	Wire connection cross section AWG	AWG 18	
	Rated current	7 A	
	Wire connection cross section AWG	AWG 20	
	Rated current	2.75 A	
	Wire connection cross section AWG	AWG 22	
	Rated current	2.75 A	
	Wire connection cross section AWG	AWG 24	
	Rated current	2.75 A	
	Rated current (cUR)	Wire connection cross section AWG	AWG 14
		Rated current	10 A
		Wire connection cross section AWG	AWG 16
		Rated current	7 A
Wire connection cross section AWG		AWG 18	
Rated current		7 A	
Wire connection cross section AWG		AWG 20	
Rated current		2.75 A	
Wire connection cross section AWG		AWG 22	
Rated current		2.75 A	
Wire connection cross section AWG		AWG 24	
Rated current		2.75 A	
Free from halogens		true	
Low smoke acc. DIN EN 45545-2		Yes	
BG		2	
Number of signal contacts		0	
Number of power contacts	15		

Connection data PE

Connection type PE	Screw connection	Blade size, slotted (PE connection)	SD 0.6 x 3.5, SD 0.8 x 4.0
Stripping length PE connection	10 mm	Tightening torque, max. PE connection	1.5 Nm

Creation date 04.05.2026 01:54:38 MEZ

Catalogue status / Drawings

HDC HD 15 FC

Weidmüller Interface GmbH & Co. KG
 Klingenbergstraße 26
 D-32758 Detmold
 Germany

www.weidmueller.com

Technical data

Tightening torque, min. PE connection	1.2 Nm	Fixing screw	M 4
Rated cross-section	2.5 mm ²	Wire cross section, AWG (PE), min.	AWG 20
Wire cross section, AWG (PE), max.	AWG 14		

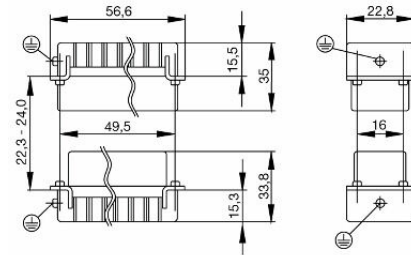
Version

Wire connection cross section AWG, max.	AWG 14	Stripping length, rated connection	8 mm
Type of connection	Crimp connection	Installation size	2
Volume resistance	≤4 mΩ	Wire connection cross section AWG, min.	AWG 26
Wire cross-section, solid, max.	2.5 mm ²	Wire cross-section, solid, min.	0.5 mm ²
Wire connection cross section, finely stranded, max.	2.5 mm ²	Wire connection cross section, finely stranded, min.	0.5 mm ²
Conductor cross-section, max.	2.5 mm ²	Conductor cross-section, min.	0.14 mm ²
Basic material	Copper alloy	BG	2

Classifications

ETIM 8.0	EC000438	ETIM 9.0	EC000438
ETIM 10.0	EC000438	ECLASS 14.0	27-44-02-05
ECLASS 15.0	27-44-02-05		

Drawings



HDC HD 15 FC

Weidmüller Interface GmbH & Co. KG
 Klingenbergstraße 26
 D-32758 Detmold
 Germany

www.weidmueller.com

Accessories

DSTV



Various accessories are available for our inserts. This includes coding elements for the inserts.

General ordering data

Type	DSTV COST4	Version
Order No.	1471300000	Heavy-duty connectors, Accessories, Coding System
GTIN (EAN)	4008190017354	
Qty.	100 ST	

Type	DSTV COBU5	Version
Order No.	1471500000	Heavy-duty connectors, Accessories, Coding element
GTIN (EAN)	4008190178543	
Qty.	100 ST	

Slotted screwdriver



VDE insulated slot-head screwdriver, SDI DIN 7437, ISO 2380/2, drive grip output acc. to DIN 5264, ISO 2380/1. SoftFinish grip

General ordering data

Type	SDIS 0.6X3.5X100	Version
Order No.	9008390000	Screwdriver, Screwdriver
GTIN (EAN)	4032248056354	
Qty.	1 ST	

Type	SDS 0.6X3.5X100	Version
Order No.	9008330000	Screwdriver, Screwdriver
GTIN (EAN)	4032248056286	
Qty.	1 ST	

Type	SDIS 0.8X4.0X100	Version
Order No.	9008400000	Screwdriver, Screwdriver
GTIN (EAN)	4032248056361	
Qty.	1 ST	

Type	SDS 0.8X4.0X100	Version
Order No.	9008340000	Screwdriver, Screwdriver
GTIN (EAN)	4032248056293	
Qty.	1 ST	

HDC HD 15 FC

Weidmüller Interface GmbH & Co. KG
 Klingenbergstraße 26
 D-32758 Detmold
 Germany

www.weidmueller.com

Accessories

Crosshead screwdriver Pozidriv



VDE insulated crosshead screwdriver type Pozidriv SDIK PZ DIN 7438, ISO 8764/2-PZ, output to ISO 8764-PZ, SoftFinish grip

General ordering data

Type	SDIK PZ 1	Version	
Order No.	9008900000	Screwdriver, Screwdriver	
GTIN (EAN)	4032248266685		
Qty.	1 ST		
Type	SDK PZ 1	Version	
Order No.	9008530000	Screwdriver, Screwdriver	
GTIN (EAN)	4032248056521		
Qty.	1 ST		

Crimping tools



Crimping tools for turned contacts

- Ratchet guarantees precise crimping
- Release option in the event of incorrect operation
- With stop for exact positioning of the contacts.

General ordering data

Type	CTX CM 1.6/2.5	Version	
Order No.	9018490000	Pressing tool, Crimping tool for contacts, 0.14mm ² , 4mm ² , W crimp	
GTIN (EAN)	4008190884598		
Qty.	1 ST		
Type	CTIN CM 1.6/2.5	Version	
Order No.	9205430000	Pressing tool, Crimping tool for contacts, 0.14mm ² , 6mm ² , 4-indent crimp	
GTIN (EAN)	4032248733446		
Qty.	1 ST		

HDC HD 15 FC

Weidmüller Interface GmbH & Co. KG
 Klingenbergstraße 26
 D-32758 Detmold
 Germany

www.weidmueller.com

Accessories

Contact removal tools



Weidmüller offers a variety of crimping tools, contact removal tools, and fibre optic tools.

General ordering data

Type	REMOVAL TOOL HD	Version
Order No.	1866730000	Tools, Contact Removal Tool
GTIN (EAN)	4032248437054	
Qty.	1 ST	

Crimp contacts HD



Crimps provide a electrical and mechanical connection between wire and contact that is both secure and reliable. The optimal crimp connection is gas-tight and corrosion-resistant.

General ordering data

Type	HDC-C-HD-BM0.14-0.37AG	Version
Order No.	1651570000	Heavy-duty connectors, Crimp contact, HD, HDD, HQ, MixMate, Female, Conductor cross-section, max.: 0.37, turned, Copper alloy
GTIN (EAN)	4008190400248	
Qty.	100 ST	
Type	HDC-C-HD-BM0.5AG	Version
Order No.	1651580000	Heavy-duty connectors, Crimp contact, HD, HDD, HQ, MixMate, Female, Conductor cross-section, max.: 0.5, turned, Copper alloy
GTIN (EAN)	4008190400255	
Qty.	100 ST	
Type	HDC-C-HD-BM0.75-1.00AG	Version
Order No.	1601760000	Heavy-duty connectors, Crimp contact, HD, HDD, HQ, MixMate, Female, Conductor cross-section, max.: 1, turned, Copper alloy
GTIN (EAN)	4008190158354	
Qty.	100 ST	
Type	HDC-C-HD-BM1.5AG	Version
Order No.	1651600000	Heavy-duty connectors, Crimp contact, HD, HDD, HQ, MixMate, Female, Conductor cross-section, max.: 1.5, turned, Copper alloy
GTIN (EAN)	4008190400279	
Qty.	100 ST	
Type	HDC-C-HD-BM2.5AG	Version
Order No.	1651610000	Heavy-duty connectors, Crimp contact, HD, HDD, HQ, MixMate, Female, Conductor cross-section, max.: 2.5, turned, Copper alloy
GTIN (EAN)	4008190400286	
Qty.	100 ST	

HDC HD 15 FC

Weidmüller Interface GmbH & Co. KG
 Klingenbergstraße 26
 D-32758 Detmold
 Germany

www.weidmueller.com

Accessories

Type	HDC-C-HD-BM0.14-0.37AU	Version
Order No.	1651670000	Heavy-duty connectors, Crimp contact, HD, HDD, HQ, MixMate,
GTIN (EAN)	4008190400347	Female, Conductor cross-section, max.: 0.37, turned, Copper alloy
Qty.	100 ST	
Type	HDC-C-HD-BM0.5AU	Version
Order No.	1651680000	Heavy-duty connectors, Crimp contact, HD, HDD, HQ, MixMate,
GTIN (EAN)	4008190400354	Female, Conductor cross-section, max.: 0.5, turned, Copper alloy
Qty.	100 ST	
Type	HDC-C-HD-BM0.75-1.00AU	Version
Order No.	1651690000	Heavy-duty connectors, Crimp contact, HD, HDD, HQ, MixMate,
GTIN (EAN)	4008190400361	Female, Conductor cross-section, max.: 1, turned, Copper alloy
Qty.	100 ST	
Type	HDC-C-HD-BM1.5AU	Version
Order No.	1651700000	Heavy-duty connectors, Crimp contact, HD, HDD, HQ, MixMate,
GTIN (EAN)	4008190400378	Female, Conductor cross-section, max.: 1.5, turned, Copper alloy
Qty.	100 ST	
Type	HDC-C-HD-BM2.5AU	Version
Order No.	1651710000	Heavy-duty connectors, Crimp contact, HD, HDD, HQ, MixMate,
GTIN (EAN)	4008190400385	Female, Conductor cross-section, max.: 2.5, turned, Copper alloy
Qty.	100 ST	