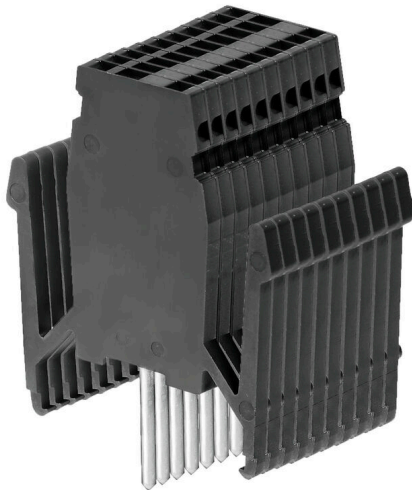


**WTA 2/10 WDU2.5/10**

**Weidmüller Interface GmbH & Co. KG**  
Klingenbergstraße 26  
D-32758 Detmold  
Germany

www.weidmueller.com

**Product image**

Test adapters and test plugs are used for the electrical connection between terminal blocks and the test equipment. In this way, an electrical contact can be established in the wired state and measurements can be done easily.

**General ordering data**

Version	Test adapter (terminal), 1.5 mm <sup>2</sup> , 250 V, 6 A
Order No.	<a href="#">1632340000</a>
Type	WTA 2/10 WDU2.5/10
GTIN (EAN)	4008190209599
Qty.	5 items
Delivery status	This article will no longer be available in the future.
Available until	2025-12-31T00:00:00+01:00

## WTA 2/10 WDU2.5/10

**Weidmüller Interface GmbH & Co. KG**  
 Klingenbergstraße 26  
 D-32758 Detmold  
 Germany

www.weidmueller.com

## Technical data

### Approvals

ROHS	Conform
------	---------

### Dimensions and weights

Depth	83.9 mm	Depth (inches)	3.3031 inch
Height	66.1 mm	Height (inches)	2.6024 inch
Width	5 mm	Width (inches)	0.1968 inch
Net weight	113.5 g		

### Temperatures

Storage temperature	-25 °C...55 °C	Ambient temperature	-50 °C...55 °C
Continuous operating temp., min.	-50 °C	Continuous operating temp., max.	100 °C

### Environmental Product Compliance

RoHS Compliance Status	Compliant with exemption
RoHS Exemption (if applicable/known)	6c
REACH SVHC	Lead 7439-92-1
SCIP	fb1756cb-1941-42d9-9a81-7624ba3e17bb

### Material data

Basic material	PA 66	Colour	black
UL 94 flammability rating	V-2		

### System specifications

Number of potentials	10	Number of levels	1
----------------------	----	------------------	---

### Additional technical data

With snap-in pegs	Yes	Installation advice	Direct mounting
-------------------	-----	---------------------	-----------------

### Conductors for clamping (rated connection)

Connection direction	on side	Tightening torque, max.	0.3 Nm
Tightening torque, min.	0.3 Nm	Stripping length	6 mm
Type of connection	Screw connection	Number of connections	1
Clamping range, max.	1.5 mm <sup>2</sup>	Clamping range, min.	0.5 mm <sup>2</sup>
Clamping screw	M 2.5	Wire connection cross-section, finely stranded with wire-end ferrules DIN 46228/4, min.	0.5 mm <sup>2</sup>
Wire connection cross-section, finely stranded with wire-end ferrules DIN 46228/1, max.	1.5 mm <sup>2</sup>	Wire connection cross-section, finely stranded with wire-end ferrules DIN 46228/1, min.	0.5 mm <sup>2</sup>
Wire connection cross section, finely stranded, max.	1.5 mm <sup>2</sup>	Wire connection cross section, finely stranded, min.	0.5 mm <sup>2</sup>
Connection cross-section, stranded, max.	1.5 mm <sup>2</sup>	Connection cross-section, stranded, min.	0.5 mm <sup>2</sup>
Wire connection cross-section, solid core, max.	1.5 mm <sup>2</sup>	Wire connection cross-section, solid core, min.	0.5 mm <sup>2</sup>

### Dimensions

Pitch in mm (P)	5.00 mm	Height with TS 35	107.6 mm
-----------------	---------	-------------------	----------

## WTA 2/10 WDU2.5/10

**Weidmüller Interface GmbH & Co. KG**  
 Klingenbergstraße 26  
 D-32758 Detmold  
 Germany

[www.weidmueller.com](http://www.weidmueller.com)

## Technical data

### General

Number of poles	10	Installation advice	Direct mounting
-----------------	----	---------------------	-----------------

### Rating data

Rated cross-section	1.5 mm <sup>2</sup>	Rated voltage	250 V
Nominal current	6 A	Volume resistance according to IEC 60947-7-x	1.83 mΩ
Power loss in accordance with IEC 60947-7-x	0.56 W		

### Classifications

ETIM 8.0	EC002555	ETIM 9.0	EC002555
ETIM 10.0	EC002555	ECLASS 14.0	27-25-03-04
ECLASS 15.0	27-25-03-04		