

WKM 8/30

Weidmüller Interface GmbH & Co. KG

Klingenbergstraße 26

D-32758 Detmold

Germany

www.weidmueller.com



The halogen-free, transparent pocket of the WKM offers outstanding protection against environmental influences. Thanks to firm fixation with cable ties, it is suitable for almost all wire cross-sections.

The pre-printed tags are simply inserted into the WKM holder and secured with a clip. WKM cable markers are the right solution for maximum efficiency in on-site marking. Your advantage when using WKM cables

- Paper and polyester labels can be printed individually with conventional office printers
- The robust design in combination with MultiCard ELS tags guarantees maximum protection against environmental influences

General ordering data

Version	WKM, Conductor and cable markers, 7 - 115 mm, 30 x 8 mm, Wire and cable markers, Transparent
Order No.	1631910000
Type	WKM 8/30
GTIN (EAN)	4008190206666
Qty.	50 items

Technical data

Approvals

ROHS	Conform
------	---------

Dimensions and weights

Depth	3.5 mm	Depth (inches)	0.1378 inch
Height	30 mm	Height (inches)	1.1811 inch
Width	8 mm	Width (inches)	0.315 inch
Net weight	0.66 g		

Temperatures

Operating temperature range	-40...80 °C
-----------------------------	-------------

Environmental Product Compliance

RoHS Compliance Status	Compliant without exemption		
REACH SVHC	No SVHC above 0.1 wt%		
Product Carbon Footprint	Cradle to gate	0.011 kg CO2 eq.	

General data

Type of printing	neutral		
Width	8 mm		
UL 94 flammability rating	HB		
Operating temperature range, max.	80 °C		
Operating temperature range, min.	-40 °C		
Colour	Transparent		
Basic material	Polypropylene		
Number of markers per packaging unit	Form of supply	MultiCard	
Number of markers per combination	1 MultiCard = Conductor and cable markers		
Operating temperature range	-40...80 °C		
Application/manufacturer	Wire and cable markers		

Conductor and cable markers

Conductor cross-section, max.	150 mm ²	Conductor cross-section, min.	16 mm ²
Conductor O.D., max.	115 mm	Conductor O.D., min.	7 mm
Conductor O.D.	7 - 115 mm	Cross-section for connected wire	16 - 150 mm ²

Important note

Product information	For cable ties with a width up to 7.7 mm
---------------------	--

Classifications

ETIM 8.0	EC001530	ETIM 9.0	EC001530
ETIM 10.0	EC001530	ECLASS 14.0	27-28-11-02
ECLASS 15.0	27-28-11-02		

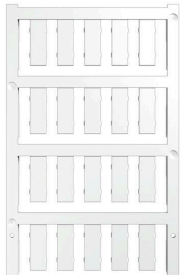
Drawings

Example of use



Accessories

Blank



ESG is the tried-and-tested marker in MultiCard format for use on many well-known electrical devices. The result is high-quality device marking with a high-contrast appearance.

Various types are available for devices from manufacturers like Siemens, ABB, Beckhoff etc.

Advantages at a glance:

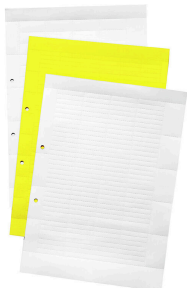
- Tags for universal usage, self-adhesive or clip-on tags, depending on type
- For aligned equipment, e.g. circuit breakers, we supply ESG markers for clipping onto tag rails
- Individual laser-quality printing according to specifications

For custom printing: Please send us a file of our labeling software M-Print PRO or M-Print PRO Online (without installation) for your labeling specifications.

General ordering data

Type	ESG 7/20 SIRIUS MC NE WS	Version	
Order No.	1736181044	ESG, Device markers x 20 mm, PA 66, Colour: white, pluggable	
GTIN (EAN)	4008190985950		
Qty.	200 ST		

ESO insert tags



General ordering data

Type	ESO 7 DIN A4 WS	Version	
Order No.	1607720000	Terminal markers, Insert markers, 30 x 6.3 mm, white	
GTIN (EAN)	4008190206116		
Qty.	10 ST		
Type	ESO 7 P DIN A4 GE	Version	
Order No.	1670400000	Terminal markers, Insert markers, 27 x 6.3 mm, yellow	
GTIN (EAN)	4008190430726		
Qty.	10 ST		
Type	ESO 7 P DIN A4 WS	Version	
Order No.	1670390000	Terminal markers, Insert markers, 27 x 6.3 mm, white	
GTIN (EAN)	4008190430719		
Qty.	10 ST		
Type	ESO 7 DIN A4 GE	Version	
Order No.	1634780000	Terminal markers, Insert markers, 27 x 6.3 mm, yellow	
GTIN (EAN)	4008190273361		
Qty.	10 ST		

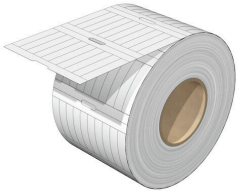
WKM 8/30

Weidmüller Interface GmbH & Co. KG
 Klingenbergstraße 26
 D-32758 Detmold
 Germany

Accessories

www.weidmueller.com

ELS 6/30



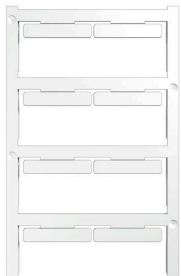
ELS

ELS tags are special and non-adhesive insertable labels for WKM cable markers or for group tag carriers. The matt, thin but tear-resistant polyester provides very good labelling and excellent readability. Used in combination with water-repellent WKM sleeves, the solution guarantees particularly long-lasting identification of cables even in harsh environments.

General ordering data

Type	ELS 6/30 MM GE	Version	
Order No.	2010620000	ELS, Insert markers, 7 - 115 mm, 30 x 6 mm, yellow	
GTIN (EAN)	4050118397178		
Qty.	3000 ST		
Type	ELS 6/30 MM WS	Version	
Order No.	2009980000	ELS, Insert markers, 7 - 115 mm, 30 x 6 mm, white	
GTIN (EAN)	4050118396850		
Qty.	3000 ST		

Blank



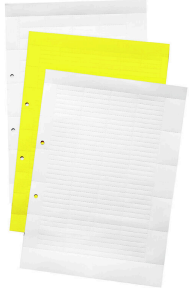
ELS MultiCard markers can be printed with a PrintJet, plotter or SMark printer. In particular, colour printing with PrintJet AVANCED allows the eye-catching identification marking of cables and terminal strips in many ways.
 ELS 6/30 for use in the WKM 8/30 cable markers or in the EM8/30 group-tag carriers
 ELS 7/40 for use in the SchT5S group-tag carriers
 ELS 16/40 for use in the WKM 18/43 cable markers or the SchT5 group-tag carriers
 For custom printing: Please send us a file of our labeling software M-Print PRO or M-Print PRO Online (without installation) for your labeling specifications.

General ordering data

Type	ELS 6/30 MC NE GE	Version	
Order No.	1045580000	ELS, Insert markers, 7 - 115 mm, 30 x 6 mm, yellow	
GTIN (EAN)	4032248779482		
Qty.	80 ST		
Type	ELS 6/30 MC NE WS	Version	
Order No.	1045570000	ELS, Insert markers, 7 - 115 mm, 30 x 6 mm, white	
GTIN (EAN)	4032248779475		
Qty.	80 ST		

Accessories

ESO insert tags



General ordering data

Type	THM ESO 7 PA WS	Version	
Order No.	1339570000	Terminal markers, Insert markers, 30 x 6.3 mm, white	
GTIN (EAN)	4050118144208		
Qty.	1 ST		
Type	THM ESO 7 PA GE	Version	
Order No.	1339580000	Terminal markers, Insert markers, 27 x 6.3 mm, yellow	
GTIN (EAN)	4050118143799		
Qty.	1 ST		