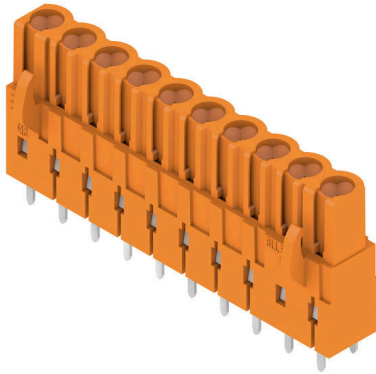


**BLL 5.08/10/180 3.2 SN OR BX**

**Weidmüller Interface GmbH & Co. KG**  
 Klingenbergstraße 26  
 D-32758 Detmold  
 Germany

www.weidmueller.com

**Product image**



Female header for PCB mounting. The solder pin length is optimised for wave flow soldering.

**General ordering data**

|              |  |
|--------------|--|
| Version      | PCB plug-in connector, female header, closed side, THT solder connection, 5.08 mm, Number of poles: 10, 180°, Solder pin length (l): 3.2 mm, tinned, orange, Box |
| Order No.    | <a href="#">1630790000</a>   |
| Type         | BLL 5.08/10/180 3.2 SN OR BX   |
| GTIN (EAN)   | 4008190204228  |
| Qty.         | 36 items   |
| Product data | IEC: 400 V / 23 A<br>UL: 300 V / 15 A  |
| Packaging    | Box  |

## BLL 5.08/10/180 3.2 SN OR BX

Weidmüller Interface GmbH & Co. KG  
Klingenbergstraße 26  
D-32758 Detmold  
Germany

www.weidmueller.com

## Technical data

## Approvals

Approvals



|                       |                            |
|-----------------------|----------------------------|
| ROHS                  | Conform                    |
| UL File Number Search | <a href="#">UL Website</a> |
| Certificate No. (UR)  | E60693                     |

## Dimensions and weights

|            |        |
|------------|--------|
| Net weight | 9.56 g |
|------------|--------|

## Environmental Product Compliance

|                        |                             |
|------------------------|-----------------------------|
| RoHS Compliance Status | Compliant without exemption |
| REACH SVHC             | No SVHC above 0.1 wt%       |

## System specifications

| Product family                                    | OMNIMATE Signal - series<br>BL/SL 5.08 | Type of connection                           | Board connection             |
|---|--|--|------------------------------|
| Mounting onto the PCB                             | THT solder connection                  | Pitch in mm (P)                              | 5.08 mm                      |
| Pitch in inches (P)                               | 0.200 "                                | Outgoing elbow                               | 180°                         |
| Number of poles                                   | 10                                     | Number of solder pins per pole               | 2                            |
| Solder pin length (l)                             | 3.2 mm                                 | Solder pin length tolerance                  | +0.1 / -0.3 mm               |
| Solder pin dimensions                             | 0.4 x 1.00 mm                          | Solder eyelet hole diameter (D)              | 1.3 mm                       |
| Solder eyelet hole diameter tolerance (D)+ 0,1 mm |  | L1 in mm                                     | 45.72 mm                     |
| L1 in inches                                      | 1.800 "                                | Number of rows                               | 1                            |
| Pin series quantity                               | 1                                      | Touch-safe protection acc. to DIN VDE 57 106 | Safe from back-of-hand touch |
| Touch-safe protection acc. to DIN VDE 0470        | IP20 plugged                           | Protection degree                            | IP20                         |
| Volume resistance                                 | ≤5 mΩ                                  | Can be coded                                 | Yes                          |
| Plugging cycles                                   | 25                                     | Plugging force/pole, max.                    | 5 N                          |
| Pulling force/pole, max.                          | 5 N                                    |  |                              |

## Material data

|                                       |                            |                                       |                            |
|---------------------------------------|----------------------------|---------------------------------------|----------------------------|
| Insulating material                   | PBT GF                     | Colour                                | orange                     |
| Colour chart (similar)                | RAL 2000                   | Insulating material group             | IIIa                       |
| Comparative Tracking Index (CTI)      | ≥ 200                      | Insulation resistance                 | 108 Ω                      |
| Moisture Level (MSL)                  |                            | UL 94 flammability rating             | V-0                        |
| Contact material                      | Copper alloy               | Contact surface                       | tinned                     |
| Layer structure of solder connection  | 4...6 μm Sn hot-dip tinned | Layer structure of plug contact       | 4...6 μm Sn hot-dip tinned |
| Storage temperature, min.             | -40 °C                     | Storage temperature, max.             | 70 °C                      |
| Operating temperature, min.           | -50 °C                     | Operating temperature, max.           | 100 °C                     |
| Temperature range, installation, min. | -25 °C                     | Temperature range, installation, max. | 100 °C                     |

## Rated data acc. to IEC

|   |                        |   |      |
|---|------------------------|---|------|
| tested acc. to standard                       | IEC 60664-1, IEC 61984 | Rated current, min. number of poles (Tu=20°C) | 23 A |
| Rated current, max. number of poles (Tu=20°C) | 16 A                   | Rated current, min. number of poles (Tu=40°C) | 20 A |

## BLL 5.08/10/180 3.2 SN OR BX

**Weidmüller Interface GmbH & Co. KG**

Klingenbergstraße 26  
D-32758 Detmold  
Germany

www.weidmueller.com

## Technical data

|   |       |   |                   |
|---|-------|---|-------------------|
| Rated current, max. number of poles (Tu=40°C)                             | 14 A  | Rated voltage for surge voltage class / pollution degree II/2         | 400 V             |
| Rated voltage for surge voltage class / pollution degree III/2            | 320 V | Rated voltage for surge voltage class / pollution degree III/3        | 250 V             |
| Rated impulse voltage for surge voltage class/ pollution degree II/2      | 4 V   | Rated impulse voltage for surge voltage class/ pollution degree III/2 | 4 kV              |
| Rated impulse voltage for surge voltage class/ contamination degree III/3 | 4 kV  | Short-time withstand current resistance                               | 3 x 1s with 120 A |

### Rated data acc. to CSA

|                                   |  |                                   |                |
|-----------------------------------|--|-----------------------------------|----------------|
| Institute (CSA)                   | CSA  | Certificate No. (CSA)             | 200039-1121690 |
| Rated voltage (Use group B / CSA) | 300 V  | Rated voltage (Use group D / CSA) | 300 V          |
| Rated current (Use group B / CSA) | 15 A   | Rated current (Use group D / CSA) | 10 A           |
| Reference to approval values      | Specifications are maximum values, details - see approval certificate. |                                   |                |

### Rated data acc. to UL 1059

|                                       |  |                                       |        |
|---------------------------------------|--|---------------------------------------|--------|
| Institute (UR)                        | UR   | Certificate No. (UR)                  | E60693 |
| Rated voltage (Use group B / UL 1059) | 300 V  | Rated voltage (Use group D / UL 1059) | 300 V  |
| Rated current (Use group B / UL 1059) | 15 A   | Rated current (Use group D / UL 1059) | 10 A   |
| Reference to approval values          | Specifications are maximum values, details - see approval certificate. |                                       |        |

### Packing

|           |           |            |           |
|-----------|-----------|------------|-----------|
| Packaging | Box       | VPE length | 349.00 mm |
| VPE width | 138.00 mm | VPE height | 31.00 mm  |

### Important note

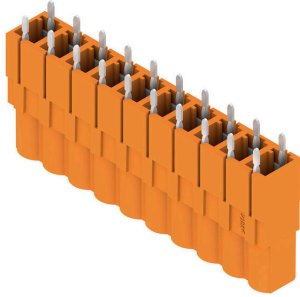
IPC conformity  
Conformity: The products are developed, manufactured and delivered according international recognized standards and norms and comply with the assured properties in the data sheet resp. fulfill decorative properties in accordance with IPC-A-610 "Class 2". Further claims on the products can be evaluated on request.

- Notes
- Additional variants on request
  - Gold-plated contact surfaces on request
  - Rated current related to rated cross-section & min. No. of poles.
  - P on drawing = pitch
  - Rated data refer only to the component itself. Clearance and creepage distances to other components are to be designed in accordance with the relevant application standards.
  - In accordance with IEC 61984, OMNIMATE-connectors are connectors without breaking capacity (COC). During designated use, connectors are not allowed to be engaged or disengaged when live or under load
  - Long term storage of the product with average temperature of 50 °C and maximum humidity 70%, 36 months

### Classifications

|             |             |             |             |
|-------------|-------------|-------------|-------------|
| ETIM 8.0    | EC002637    | ETIM 9.0    | EC002637    |
| ETIM 10.0   | EC002637    | ECLASS 14.0 | 27-46-02-01 |
| ECLASS 15.0 | 27-46-02-01 |             |             |

Product image



Dimensional drawing



Example of use



### Coding elements



Only connects what is supposed to be connected: the right connection at the right place.  
 Coding elements and locking devices clearly assign connecting elements during the manufacturing process and operation  
 The coding elements and locking devices are inserted prior to assembly or during the cable assembly phase. The Weidmüller alternative: configure online using the variant configurator to precode prior to delivery. Incorrect assembly on the circuit board and incorrect plugging of connecting elements is no longer possible. The advantage: no troubleshooting during manufacture and no operational errors by the user.

### General ordering data

|            |                            |  |
|------------|----------------------------|--|
| Type       | BLZ/SL KO BK BX            | Version  |
| Order No.  | <a href="#">1545710000</a> | PCB plug-in connector, Accessories, Coding element, black, Number  |
| GTIN (EAN) | 4008190087142              | of poles: 1  |
| Qty.       | 50 ST                      |  |
| Type       | BLZ/SL KO OR BX            | Version  |
| Order No.  | <a href="#">1573010000</a> | PCB plug-in connector, Accessories, Coding element, orange, Number |
| GTIN (EAN) | 4008190048396              | of poles: 1  |
| Qty.       | 100 ST                     |  |

## BLL 5.08/10/180 3.2 SN OR BX

**Weidmüller Interface GmbH & Co. KG**  
Klingenbergstraße 26  
D-32758 Detmold  
Germany

[www.weidmueller.com](http://www.weidmueller.com)

## Counterpart

### SLDF 5.08



Male connector for through-panel mounting with optional locking function. Internal connection as flat-blade or solder connection. These male connectors provide space for labelling and can be coded.

#### General ordering data

|            |                            |   |
|------------|----------------------------|---|
| Type       | SLDF 5.08 L/F 10 SN OR ... | Version   |
| Order No.  | <a href="#">1599210000</a> | PCB plug-in connector, male header, 5.08 mm, Number of poles: 10, |
| GTIN (EAN) | 4008190065522              | 180°, Flat-blade connection, Solder connection, Box               |
| Qty.       | 24 ST                      |   |

### SL 5.08/135



Male connectors with 135° outlet direction. The solder pin length is optimised for wave flow soldering. The pin headers provide space for labelling and can be coded.

#### General ordering data

|            |                            |   |
|------------|----------------------------|---|
| Type       | SL 5.08/10/135 3.2SN OR... | Version   |
| Order No.  | <a href="#">1603140000</a> | PCB plug-in connector, male header, open side, THT solder         |
| GTIN (EAN) | 4008190082123              | connection, 5.08 mm, Number of poles: 10, 135°, Solder pin length |
| Qty.       | 50 ST                      | (l): 3.2 mm, tinned, orange, Box                                  |

### SL 5.08/135B



Male connectors with 135° outlet direction. The solder pin length is optimised for wave flow soldering. The pin headers provide space for labelling and can be coded.

#### General ordering data

|            |                            |  |
|------------|----------------------------|--|
| Type       | SL 5.08/10/135B 3.2SN O... | Version  |
| Order No.  | <a href="#">1605610000</a> | PCB plug-in connector, male header, Dovetails for fixing blocks, THT |
| GTIN (EAN) | 4008190178284              | solder connection, 5.08 mm, Number of poles: 10, 135°, Solder pin    |
| Qty.       | 50 ST                      | length (l): 3.2 mm, tinned, orange, Box                              |

## BLL 5.08/10/180 3.2 SN OR BX

**Weidmüller Interface GmbH & Co. KG**  
 Klingenbergstraße 26  
 D-32758 Detmold  
 Germany

www.weidmueller.com

## Counterpart

### SL 5.08/180



Male connectors with straight outlet direction. The solder pin length is optimised for wave flow soldering. The pin headers provide space for labelling and can be coded.

#### General ordering data

|            |                            |   |
|------------|----------------------------|---|
| Type       | SL 5.08/10/180 3.2SN OR... | Version   |
| Order No.  | <a href="#">1518060000</a> | PCB plug-in connector, male header, open side, THT solder         |
| GTIN (EAN) | 4008190122539              | connection, 5.08 mm, Number of poles: 10, 180°, Solder pin length |
| Qty.       | 50 ST                      | (l): 3.2 mm, tinned, orange, Box                                  |

### SL 5.08/180B



Male connectors with straight outlet direction. The solder pin length is optimised for wave flow soldering. The pin headers provide space for labelling and can be coded.

#### General ordering data

|            |                            |  |
|------------|----------------------------|--|
| Type       | SL 5.08/10/180B 3.2SN O... | Version  |
| Order No.  | <a href="#">1520360000</a> | PCB plug-in connector, male header, Dovetails for fixing blocks, THT |
| GTIN (EAN) | 4008190030612              | solder connection, 5.08 mm, Number of poles: 10, 180°, Solder pin    |
| Qty.       | 50 ST                      | length (l): 3.2 mm, tinned, orange, Box                              |

### SL 5.08/90



Male connectors with 90° outlet direction. The solder pin length is optimised for wave flow soldering. The pin headers provide space for labelling and can be coded.

#### General ordering data

|            |                            |   |
|------------|----------------------------|---|
| Type       | SL 5.08/10/90 3.2SN OR ... | Version   |
| Order No.  | <a href="#">1508860000</a> | PCB plug-in connector, male header, open side, THT solder             |
| GTIN (EAN) | 4008190089092              | connection, 5.08 mm, Number of poles: 10, 90°, Solder pin length (l): |
| Qty.       | 50 ST                      | 3.2 mm, tinned, orange, Box   |

## BLL 5.08/10/180 3.2 SN OR BX

**Weidmüller Interface GmbH & Co. KG**  
 Klingenbergstraße 26  
 D-32758 Detmold  
 Germany

www.weidmueller.com

## Counterpart

### SL 5.08/90B



Male connectors with 90° outlet direction. The solder pin length is optimised for wave flow soldering. The pin headers provide space for labelling and can be coded.

#### General ordering data

|            |                            |  |
|------------|----------------------------|--|
| Type       | SL 5.08/10/90B 3.2SN OR... | Version  |
| Order No.  | <a href="#">1511160000</a> | PCB plug-in connector, male header, Dovetails for fixing blocks, THT |
| GTIN (EAN) | 4008190052485              | solder connection, 5.08 mm, Number of poles: 10, 90°, Solder pin     |
| Qty.       | 50 ST                      | length (l): 3.2 mm, tinned, orange, Box                              |

### SL 5.08HC/180

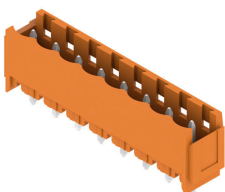


Pin headers in glass-fibre-reinforced plastic with straight wire outlet; optimised for wave soldering. The flange variant (F) can be screwed onto the respective counter piece or the circuit board. There is no need for an extra screw to connect the circuit board when the solder flange (LF) version is used. This also protects the solder points from mechanical strain. All pin headers can be manually coded or ordered pre-coded. HC = High Current.

#### General ordering data

|            |                            |   |
|------------|----------------------------|---|
| Type       | SL 5.08HC/10/180 3.2SN ... | Version   |
| Order No.  | <a href="#">1148290000</a> | PCB plug-in connector, male header, open side, THT solder         |
| GTIN (EAN) | 4032248107773              | connection, 5.08 mm, Number of poles: 10, 180°, Solder pin length |
| Qty.       | 50 ST                      | (l): 3.2 mm, tinned, black, Box                                   |
| Type       | SL 5.08HC/10/180 3.2SN ... | Version   |
| Order No.  | <a href="#">1146530000</a> | PCB plug-in connector, male header, open side, THT solder         |
| GTIN (EAN) | 4032248933310              | connection, 5.08 mm, Number of poles: 10, 180°, Solder pin length |
| Qty.       | 50 ST                      | (l): 3.2 mm, tinned, orange, Box                                  |

### SL 5.08HC/180B



Pin headers in glass-fibre-reinforced plastic with straight wire outlet; optimised for wave soldering. The flange variant (F) can be screwed onto the respective counter piece or the circuit board. There is no need for an extra screw to connect the circuit board when the solder flange (LF) version is used. This also protects the solder points from mechanical strain. All pin headers can be manually coded or ordered pre-coded. HC = High Current.

## BLL 5.08/10/180 3.2 SN OR BX

**Weidmüller Interface GmbH & Co. KG**  
 Klingenbergstraße 26  
 D-32758 Detmold  
 Germany

## Counterpart

www.weidmueller.com

## General ordering data

|            |                            |  |
|------------|----------------------------|--|
| Type       | SL 5.08HC/10/180B 3.2SN... | Version  |
| Order No.  | <a href="#">1149670000</a> | PCB plug-in connector, male header, Dovetails for fixing blocks, THT |
| GTIN (EAN) | 4032248934904              | solder connection, 5.08 mm, Number of poles: 10, 180°, Solder pin    |
| Qty.       | 50 ST                      | length (l): 3.2 mm, tinned, black, Box                               |
| Type       | SL 5.08HC/10/180B 3.2SN... | Version  |
| Order No.  | <a href="#">1147580000</a> | PCB plug-in connector, male header, Dovetails for fixing blocks, THT |
| GTIN (EAN) | 4032248934249              | solder connection, 5.08 mm, Number of poles: 10, 180°, Solder pin    |
| Qty.       | 50 ST                      | length (l): 3.2 mm, tinned, orange, Box                              |

## SL 5.08HC/180G

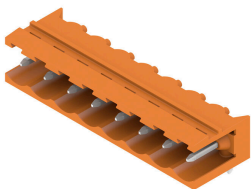


Pin headers in glass-fibre-reinforced plastic with straight wire outlet; optimised for wave soldering. The flange variant (F) can be screwed onto the respective counter piece or the circuit board. There is no need for an extra screw to connect the circuit board when the solder flange (LF) version is used. This also protects the solder points from mechanical strain. All pin headers can be manually coded or ordered pre-coded. HC = High Current.

## General ordering data

|            |                            |   |
|------------|----------------------------|---|
| Type       | SL 5.08HC/10/180G 3.2SN... | Version   |
| Order No.  | <a href="#">1148900000</a> | PCB plug-in connector, male header, closed side, THT solder       |
| GTIN (EAN) | 4032248935369              | connection, 5.08 mm, Number of poles: 10, 180°, Solder pin length |
| Qty.       | 50 ST                      | (l): 3.2 mm, tinned, black, Box                                   |
| Type       | SL 5.08HC/10/180G 3.2SN... | Version   |
| Order No.  | <a href="#">1146910000</a> | PCB plug-in connector, male header, closed side, THT solder       |
| GTIN (EAN) | 4032248108602              | connection, 5.08 mm, Number of poles: 10, 180°, Solder pin length |
| Qty.       | 50 ST                      | (l): 3.2 mm, tinned, orange, Box                                  |

## SL 5.08HC/90



Pin headers made from glass-fibre-reinforced plastic with 90° wire outlet; optimised for wave soldering. The flange variant (F) can be screwed onto the respective counter piece or the circuit board. There is no need for an extra screw to connect the circuit board when the solder flange (LF) version is used. This also protects the solder points from mechanical strain. All pin headers can be manually coded or ordered pre-coded. HC = High Current.

## General ordering data

|            |                            |   |
|------------|----------------------------|---|
| Type       | SL 5.08HC/10/90 3.2SN B... | Version   |
| Order No.  | <a href="#">1155130000</a> | PCB plug-in connector, male header, open side, THT solder             |
| GTIN (EAN) | 4050118050738              | connection, 5.08 mm, Number of poles: 10, 90°, Solder pin length (l): |
| Qty.       | 50 ST                      | 3.2 mm, tinned, black, Box  |
| Type       | SL 5.08HC/10/90 3.2SN O... | Version   |
| Order No.  | <a href="#">1146900000</a> | PCB plug-in connector, male header, open side, THT solder             |
| GTIN (EAN) | 4050118051421              | connection, 5.08 mm, Number of poles: 10, 90°, Solder pin length (l): |
| Qty.       | 50 ST                      | 3.2 mm, tinned, orange, Box   |

**BLL 5.08/10/180 3.2 SN OR BX**

**Weidmüller Interface GmbH & Co. KG**  
 Klingenbergstraße 26  
 D-32758 Detmold  
 Germany

**Counterpart**

www.weidmueller.com

**SL 5.08HC/90B**

Pin headers made from glass-fibre-reinforced plastic with 90° wire outlet; optimised for wave soldering. The flange variant (F) can be screwed onto the respective counter piece or the circuit board. There is no need for an extra screw to connect the circuit board when the solder flange (LF) version is used. This also protects the solder points from mechanical strain. All pin headers can be manually coded or ordered pre-coded. HC = High Current.

**General ordering data**

|            |                            |  |
|------------|----------------------------|--|
| Type       | SL 5.08HC/10/90B 3.2SN ... | Version  |
| Order No.  | <a href="#">1155670000</a> | PCB plug-in connector, male header, Dovetails for fixing blocks, THT |
| GTIN (EAN) | 4050118050271              | solder connection, 5.08 mm, Number of poles: 10, 90°, Solder pin     |
| Qty.       | 50 ST                      | length (l): 3.2 mm, tinned, black, Box                               |
| Type       | SL 5.08HC/10/90B 3.2SN ... | Version  |
| Order No.  | <a href="#">1154850000</a> | PCB plug-in connector, male header, Dovetails for fixing blocks, THT |
| GTIN (EAN) | 4050118050967              | solder connection, 5.08 mm, Number of poles: 10, 90°, Solder pin     |
| Qty.       | 50 ST                      | length (l): 3.2 mm, tinned, orange, Box                              |

**SLDV 5.08/180**

Pin headers with solder pin length optimised for wave flow soldering. The male connectors provide space for labelling and can be coded. HC = High Current.

**General ordering data**

|            |                            |   |
|------------|----------------------------|---|
| Type       | SLD 5.08V/20/180 3.2SN ... | Version   |
| Order No.  | <a href="#">1725730000</a> | PCB plug-in connector, male header, open side, THT solder         |
| GTIN (EAN) | 4032248062027              | connection, 5.08 mm, Number of poles: 20, 180°, Solder pin length |
| Qty.       | 20 ST                      | (l): 3.2 mm, tinned, orange, Box                                  |

**SLDV 5.08/180B**

Pin headers with solder pin length optimised for wave flow soldering. The male connectors provide space for labelling and can be coded. HC = High Current.

## BLL 5.08/10/180 3.2 SN OR BX

**Weidmüller Interface GmbH & Co. KG**  
 Klingenbergstraße 26  
 D-32758 Detmold  
 Germany

www.weidmueller.com

## Counterpart

### General ordering data

|            |                            |  |
|------------|----------------------------|--|
| Type       | SLD 5.08V/20/180B 3.2SN... | Version  |
| Order No.  | <a href="#">1726820000</a> | PCB plug-in connector, male header, Dovetails for fixing blocks, THT |
| GTIN (EAN) | 4032248062706              | solder connection, 5.08 mm, Number of poles: 20, 180°, Solder pin    |
| Qty.       | 20 ST                      | length (l): 3.2 mm, tinned, orange, Box                              |

### SLDV 5.08/90



Pin headers with solder pin length optimised for wave flow soldering. The male connectors provide space for labelling and can be coded. HC = High Current.

### General ordering data

|            |                            |   |
|------------|----------------------------|---|
| Type       | SLD 5.08V/20/90 3.2 SN ... | Version   |
| Order No.  | <a href="#">1725250000</a> | PCB plug-in connector, male header, open side, THT solder             |
| GTIN (EAN) | 4032248060658              | connection, 5.08 mm, Number of poles: 20, 90°, Solder pin length (l): |
| Qty.       | 20 ST                      | 3.2 mm, tinned, orange, Box   |

### SLDV 5.08/90B



Pin headers with solder pin length optimised for wave flow soldering. The male connectors provide space for labelling and can be coded. HC = High Current.

### General ordering data

|            |                            |  |
|------------|----------------------------|--|
| Type       | SLD 5.08V/20/90B 3.2 SN... | Version  |
| Order No.  | <a href="#">1726360000</a> | PCB plug-in connector, male header, Dovetails for fixing blocks, THT |
| GTIN (EAN) | 4032248061334              | solder connection, 5.08 mm, Number of poles: 20, 90°, Solder pin     |
| Qty.       | 20 ST                      | length (l): 3.2 mm, tinned, orange, Box                              |

## BLL 5.08/10/180 3.2 SN OR BX

**Weidmüller Interface GmbH & Co. KG**  
 Klingenbergstraße 26  
 D-32758 Detmold  
 Germany

## Counterpart

www.weidmueller.com

### SL-SMT 5.08/180 Box

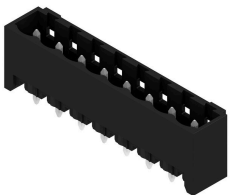


High-temperature-resistant, straight, open pin header. Packed in box or tape. On tape and with 1.5 mm solder pin, optimised for automatic assembly. 3.2 mm solder pin suitable for reflow and wave soldering. The pin headers provide space for labelling and can be coded. HC = High Current.

#### General ordering data

|            |                            |   |
|------------|----------------------------|---|
| Type       | SL-SMT 5.08HC/10/180 1...  | Version   |
| Order No.  | <a href="#">1775682001</a> | PCB plug-in connector, male header, open side, THT/THR solder connection, 5.08 mm, Number of poles: 10, 180°, Solder pin length (l): 1.5 mm, tinned, black, Box |
| GTIN (EAN) | 4032248158324              |   |
| Qty.       | 50 ST                      |   |
| Type       | SL-SMT 5.08HC/10/180 3...  | Version   |
| Order No.  | <a href="#">1838060000</a> | PCB plug-in connector, male header, open side, THT/THR solder connection, 5.08 mm, Number of poles: 10, 180°, Solder pin length (l): 3.2 mm, tinned, black, Box |
| GTIN (EAN) | 4032248348121              |   |
| Qty.       | 50 ST                      |   |

### SL-SMT 5.08/180G Box



High-temperature-resistant pin header, packed in box or tape. On tape, with 1.5 mm solder pin, optimised for automatic assembly. 3.2 mm solder pin suitable for reflow and wave soldering. The pin headers provide space for labelling and can be coded. HC = High Current.

#### General ordering data

|            |                            |   |
|------------|----------------------------|---|
| Type       | SL-SMT 5.08HC/10/180G 1... | Version   |
| Order No.  | <a href="#">1776002001</a> | PCB plug-in connector, male header, closed side, THT/THR solder connection, 5.08 mm, Number of poles: 10, 180°, Solder pin length (l): 1.5 mm, tinned, black, Box |
| GTIN (EAN) | 4032248158997              |   |
| Qty.       | 50 ST                      |   |
| Type       | SL-SMT 5.08HC/10/180G 3... | Version   |
| Order No.  | <a href="#">1838290000</a> | PCB plug-in connector, male header, closed side, THT/THR solder connection, 5.08 mm, Number of poles: 10, 180°, Solder pin length (l): 3.2 mm, tinned, black, Box |
| GTIN (EAN) | 4032248348350              |   |
| Qty.       | 50 ST                      |   |

## BLL 5.08/10/180 3.2 SN OR BX

**Weidmüller Interface GmbH & Co. KG**  
 Klingenbergstraße 26  
 D-32758 Detmold  
 Germany

## Counterpart

www.weidmueller.com

## SL-SMT 5.08HC/90 Box



High-temperature-resistant, 90° angled, open male header. Packed in box or tape. On tape, with 1.5 mm solder pin, optimised for automatic assembly. 3.2 mm solder pin suitable for reflow and wave soldering. The pin headers provide space for labelling and can be coded. HC = High Current.

## General ordering data

|            |                            |   |
|------------|----------------------------|---|
| Type       | SL-SMT 5.08HC/10/90 1.5... | Version   |
| Order No.  | <a href="#">1774842001</a> | PCB plug-in connector, male header, open side, THT/THR solder connection, 5.08 mm, Number of poles: 10, 90°, Solder pin length (l): |
| GTIN (EAN) | 4032248155880              |   |
| Qty.       | 50 ST                      | 1.5 mm, tinned, black, Box  |
| Type       | SL-SMT 5.08HC/10/90 3.2... | Version   |
| Order No.  | <a href="#">1780030000</a> | PCB plug-in connector, male header, open side, THT/THR solder connection, 5.08 mm, Number of poles: 10, 90°, Solder pin length (l): |
| GTIN (EAN) | 4032248165353              |   |
| Qty.       | 50 ST                      | 3.2 mm, tinned, black, Box  |

## SL-SMT 5.08HC/90G Box



High-temperature-resistant pin header, packed in box or tape. On tape, with 1.5 mm solder pin, optimised for automatic assembly. 3.2 mm solder pin suitable for reflow and wave soldering. The pin headers provide space for labelling and can be coded. HC = High Current.

## General ordering data

|            |                            |   |
|------------|----------------------------|---|
| Type       | SL-SMT 5.08HC/10/90G 1.... | Version   |
| Order No.  | <a href="#">1775082001</a> | PCB plug-in connector, male header, closed side, THT/THR solder connection, 5.08 mm, Number of poles: 10, 90°, Solder pin length (l): |
| GTIN (EAN) | 4032248156559              |   |
| Qty.       | 50 ST                      | 1.5 mm, tinned, black, Box  |
| Type       | SL-SMT 5.08HC/10/90G 1.... | Version   |
| Order No.  | <a href="#">1775083001</a> | PCB plug-in connector, male header, closed side, THT/THR solder connection, 5.08 mm, Number of poles: 10, 90°, Solder pin length (l): |
| GTIN (EAN) | 4032248166312              |   |
| Qty.       | 30 ST                      | 1.5 mm, tinned, black, Tray   |
| Type       | SL-SMT 5.08HC/10/90G 3...  | Version   |
| Order No.  | <a href="#">1780260000</a> | PCB plug-in connector, male header, closed side, THT/THR solder connection, 5.08 mm, Number of poles: 10, 90°, Solder pin length (l): |
| GTIN (EAN) | 4032248165582              |   |
| Qty.       | 50 ST                      | 3.2 mm, tinned, black, Box  |

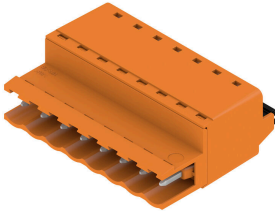
## BLL 5.08/10/180 3.2 SN OR BX

**Weidmüller Interface GmbH & Co. KG**  
 Klingenbergstraße 26  
 D-32758 Detmold  
 Germany

[www.weidmueller.com](http://www.weidmueller.com)

## Counterpart

### SLF 5.08/180 SN

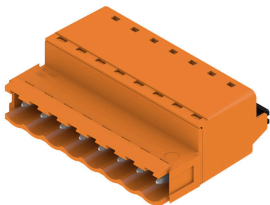


Male plug with PUSH IN wire connection and straight outlet direction, when used with BLF 5.08HC as wire-to-wire application for panel feed-through The male plugs provide space for labelling and can be coded.

#### General ordering data

|            |                            |   |
|------------|----------------------------|---|
| Type       | SLF 5.08/10/180 SN BK BX   | Version   |
| Order No.  | <a href="#">1335710000</a> | PCB plug-in connector, male plug, 5.08 mm, Number of poles: 10,   |
| GTIN (EAN) | 4050118139143              | 180°, PUSH IN with actuator, Clamping range, max. : 3.31 mm², Box |
| Qty.       | 36 ST                      |   |
| Type       | SLF 5.08/10/180 SN OR BX   | Version   |
| Order No.  | <a href="#">1335410000</a> | PCB plug-in connector, male plug, 5.08 mm, Number of poles: 10,   |
| GTIN (EAN) | 4050118138719              | 180°, PUSH IN with actuator, Clamping range, max. : 3.31 mm², Box |
| Qty.       | 36 ST                      |   |

### SLF 5.08/180B SN



Male plug with PUSH IN wire connection and straight outlet direction, when used with BLF 5.08HC as wire-to-wire application for panel feed-through The male plugs provide space for labelling and can be coded.

#### General ordering data

|            |                            |   |
|------------|----------------------------|---|
| Type       | SLF 5.08/10/180B SN BK ... | Version   |
| Order No.  | <a href="#">1335940000</a> | PCB plug-in connector, male plug, 5.08 mm, Number of poles: 10,   |
| GTIN (EAN) | 4050118138993              | 180°, PUSH IN with actuator, Clamping range, max. : 3.31 mm², Box |
| Qty.       | 30 ST                      |   |
| Type       | SLF 5.08/10/180B SN OR ... | Version   |
| Order No.  | <a href="#">1335530000</a> | PCB plug-in connector, male plug, 5.08 mm, Number of poles: 10,   |
| GTIN (EAN) | 4050118139044              | 180°, PUSH IN with actuator, Clamping range, max. : 3.31 mm², Box |
| Qty.       | 30 ST                      |   |

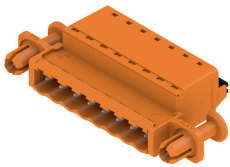
## BLL 5.08/10/180 3.2 SN OR BX

**Weidmüller Interface GmbH & Co. KG**  
Klingenbergstraße 26  
D-32758 Detmold  
Germany

www.weidmueller.com

## Counterpart

### SLF 5.08/180DF SN

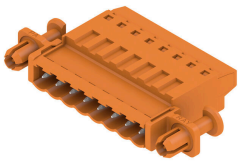


Male plug with PUSH IN wire connection and straight outlet direction, when used with BLF 5.08HC as wire-to-wire application for panel feed-through The male plugs provide space for labelling and can be coded.

#### General ordering data

|            |                            |  |
|------------|----------------------------|--|
| Type       | SLF 5.08/10/180DF SN OR... | Version  |
| Order No.  | <a href="#">1353680000</a> | PCB plug-in connector, male plug, 5.08 mm, Number of poles: 10,  |
| GTIN (EAN) | 4050118156423              | 180°, PUSH IN with actuator, Clamping range, max.: 3.31 mm², Box |
| Qty.       | 24 ST                      |  |

### SLT 5.08/180DF SN

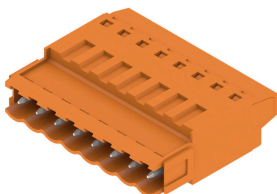


Male plugs with screw TOP wire connection. The male plug provides space for labelling and can be coded.

#### General ordering data

|            |                            |   |
|------------|----------------------------|---|
| Type       | SLT 5.08/10/180DF SN OR... | Version   |
| Order No.  | <a href="#">1353450000</a> | PCB plug-in connector, male plug, 5.08 mm, Number of poles: 10, |
| GTIN (EAN) | 4050118156102              | 180°, TOP connection, Clamping range, max.: 2.5 mm², Box        |
| Qty.       | 24 ST                      |   |

### SLT 5.08B



Male plugs with screw TOP wire connection. The male plug provides space for labelling and can be coded.

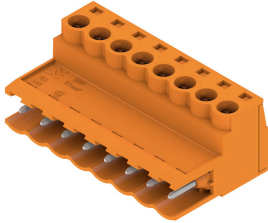
#### General ordering data

|            |                            |   |
|------------|----------------------------|---|
| Type       | SLT 5.08/10/180B SN OR ... | Version   |
| Order No.  | <a href="#">1611790000</a> | PCB plug-in connector, male plug, 5.08 mm, Number of poles: 10, |
| GTIN (EAN) | 4008190192679              | 180°, TOP connection, Clamping range, max.: 2.5 mm², Box        |
| Qty.       | 50 ST                      |   |

**BLL 5.08/10/180 3.2 SN OR BX**

**Weidmüller Interface GmbH & Co. KG**  
 Klingenbergstraße 26  
 D-32758 Detmold  
 Germany

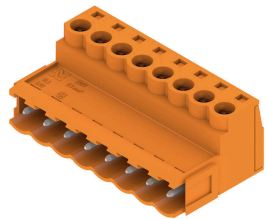
www.weidmueller.com

**Counterpart****SLS 5.08/180 SN**

Male plugs with clamping-yoke screw wire-connect system. The male plugs provide space for labelling and can be coded.

**General ordering data**

|            |                            |   |
|------------|----------------------------|---|
| Type       | SLS 5.08/10/180 SN OR BX   | Version   |
| Order No.  | <a href="#">1627170000</a> | PCB plug-in connector, male plug, 5.08 mm, Number of poles: 10,               |
| GTIN (EAN) | 4008190199685              | 180°, Clamping yoke connection, Clamping range, max. : 3.31 mm <sup>2</sup> , |
| Qty.       | 36 ST                      | Box   |

**SLS 5.08/180B**

Male plugs with clamping-yoke screw wire-connect system. The male plugs provide space for labelling and can be coded.

**General ordering data**

|            |                            |   |
|------------|----------------------------|---|
| Type       | SLS 5.08/10/180B SN OR ... | Version   |
| Order No.  | <a href="#">1627320000</a> | PCB plug-in connector, male plug, 5.08 mm, Number of poles: 10,               |
| GTIN (EAN) | 4008190199838              | 180°, Clamping yoke connection, Clamping range, max. : 3.31 mm <sup>2</sup> , |
| Qty.       | 30 ST                      | Box   |

**SLS 5.08TB KF35**

Male plugs with clamping-yoke screw wire-connect system. With clip-on feet for attaching the male plugs on rail. The male plugs provide space for labelling and can be coded.

**General ordering data**

|            |                            |   |
|------------|----------------------------|---|
| Type       | SLS 5.08/10/180TB KF SN... | Version   |
| Order No.  | <a href="#">1846160000</a> | PCB plug-in connector, male plug, 5.08 mm, Number of poles: 10,               |
| GTIN (EAN) | 4032248362448              | 180°, Clamping yoke connection, Clamping range, max. : 3.31 mm <sup>2</sup> , |
| Qty.       | 10 ST                      | Box   |

**Counterpart****SLS 5.08TB RF15**

Male plugs with clamping-yoke screw wire-connect system. With clip-on feet for attaching the male plugs on rail. The male plugs provide space for labelling and can be coded.

**General ordering data**

|            |                            |  |
|------------|----------------------------|--|
| Type       | SLS 5.08/10/180TB RF15 ... | Version  |
| Order No.  | <a href="#">1846080000</a> | PCB plug-in connector, male plug, 5.08 mm, Number of poles: 10,  |
| GTIN (EAN) | 4032248362363              | 180°, Clamping yoke connection, Clamping range, max. : 3.31 mm², |
| Qty.       | 10 ST                      | Box  |