

WKM 18/43**Weidmüller Interface GmbH & Co. KG**

Klingenbergstraße 26

D-32758 Detmold

Germany

www.weidmueller.com



The halogen-free, transparent pocket of the WKM offers outstanding protection against environmental influences. Thanks to firm fixation with cable ties, it is suitable for almost all wire cross-sections.

The pre-printed tags are simply inserted into the WKM holder and secured with a clip. WKM cable markers are the right solution for maximum efficiency in on-site marking. Your advantage when using WKM cables

- Paper and polyester labels can be printed individually with conventional office printers
- The robust design in combination with MultiCard ELS tags guarantees maximum protection against environmental influences

General ordering data

Version	WKM, Conductor and cable markers, 7 - 115 mm, 43 x 18 mm, Wire and cable markers, Transparent
Order No.	1610700000
Type	WKM 18/43
GTIN (EAN)	4008190204488
Qty.	50 items

Technical data

Approvals

ROHS	Conform
------	---------

Dimensions and weights

Depth	3.5 mm	Depth (inches)	0.1378 inch
Height	43 mm	Height (inches)	1.6929 inch
Width	18 mm	Width (inches)	0.7087 inch
Net weight	1.66 g		

Temperatures

Operating temperature range	-40...80 °C
-----------------------------	-------------

Environmental Product Compliance

RoHS Compliance Status	Compliant without exemption		
REACH SVHC	No SVHC above 0.1 wt%		
Product Carbon Footprint	Cradle to gate	0.019 kg CO2 eq.	

General data

Type of printing	neutral		
Width	18 mm		
UL 94 flammability rating	HB		
Operating temperature range, max.	80 °C		
Operating temperature range, min.	-40 °C		
Colour	Transparent		
Basic material	Polypropylene		
Number of markers per packaging unit	Form of supply	MultiCard	
Number of markers per combination	1 MultiCard = Conductor and cable markers		
Operating temperature range	-40...80 °C		
Application/manufacturer	Wire and cable markers		

Conductor and cable markers

Conductor cross-section, max.	150 mm ²	Conductor cross-section, min.	16 mm ²
Conductor O.D., max.	115 mm	Conductor O.D., min.	7 mm
Conductor O.D.	7 - 115 mm	Cross-section for connected wire	16 - 150 mm ²

Important note

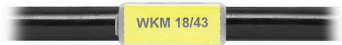
Product information	For cable ties with a width up to 8.4 mm
---------------------	--

Classifications

ETIM 8.0	EC001530	ETIM 9.0	EC001530
ETIM 10.0	EC001530	ECLASS 14.0	27-28-11-02
ECLASS 15.0	27-28-11-02		

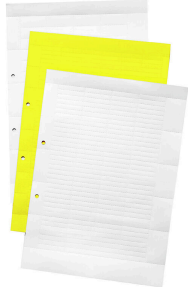
Drawings

Example of use



Accessories

ESO insert tags



General ordering data

Type	ESO 5 DIN A4 WS	Version
Order No.	1607710000	Terminal markers, Insert markers, 40 x 16.5 mm, white
GTIN (EAN)	4008190206109	
Qty.	10 ST	
Type	ESO 5 DIN A4 GE	Version
Order No.	1631350000	Terminal markers, Insert markers, 40 x 16.5 mm, yellow
GTIN (EAN)	4008190206208	
Qty.	10 ST	
Type	ESO 5 P DIN A4 WS	Version
Order No.	1670370000	Terminal markers, Insert markers, 40 x 16.5 mm, white
GTIN (EAN)	4008190430696	
Qty.	10 ST	
Type	ESO 5 P DIN A4 GE	Version
Order No.	1670380000	Terminal markers, Insert markers, 40 x 16.5 mm, yellow
GTIN (EAN)	4008190430702	
Qty.	10 ST	

Blank



ELS MultiCard markers can be printed with a PrintJet, plotter or SMark printer. In particular, colour printing with PrintJet AVANCED allows the eye-catching identification marking of cables and terminal strips in many ways.

ELS 6/30 for use in the WKM 8/30 cable markers or in the EM8/30 group-tag carriers

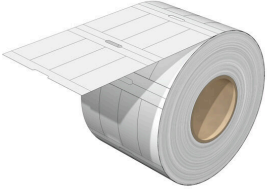
ELS 7/40 for use in the SchT5S group-tag carriers

ELS 16/40 for use in the WKM 18/43 cable markers or the SchT5 group-tag carriers

For custom printing: Please send us a file of our labeling software M-Print PRO or M-Print PRO Online (without installation) for your labeling specifications.

General ordering data

Type	ELS 16/40 MC NE GE	Version
Order No.	1045630000	ELS, Insert markers, 7 - 115 mm, 40 x 16 mm, yellow
GTIN (EAN)	4032248779628	
Qty.	40 ST	
Type	ELS 16/40 MC NE WS	Version
Order No.	1045620000	ELS, Insert markers, 7 - 115 mm, 40 x 16 mm, white
GTIN (EAN)	4032248779611	
Qty.	40 ST	

ELS 16/40**ELS**

ELS tags are special and non-adhesive insertable labels for WKM cable markers or for group tag carriers. The matt, thin but tear-resistant polyester provides very good labelling and excellent readability. Used in combination with water-repellent WKM sleeves, the solution guarantees particularly long-lasting identification of cables even in harsh environments.

General ordering data

Type	ELS 16/40 MM GE	Version	
Order No.	2005260000		ELS, Insert markers, 7 - 115 mm, 40 x 16 mm, yellow
GTIN (EAN)	4050118389975		
Qty.	2000 ST		
Type	ELS 16/40 MM WS	Version	
Order No.	2005200000		ELS, Insert markers, 7 - 115 mm, 40 x 16 mm, white
GTIN (EAN)	4050118390056		
Qty.	2000 ST		