

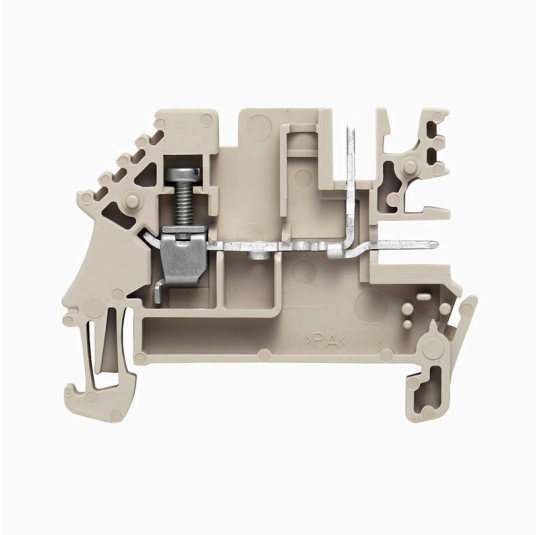
WDU 1.5/BLZ 5.08**Weidmüller Interface GmbH & Co. KG**

Klingenbergstraße 26

D-32758 Detmold

Germany

www.weidmueller.com

Product image

To feed through power, signal, and data is the classical requirement in electrical engineering and panel building. The insulating material, the connection system and the design of the terminal blocks are the differentiating features. A feed-through terminal block is suitable for joining and/or connecting one or more conductors. They could have one or more connection levels that are on the same potential or insulated against one another.

General ordering data

Version	Feed-through terminal block, Screw connection, dark beige, 1.5 mm ² , 16 A, 250 V, Number of connections: 3
Order No.	1577340000
Type	WDU 1.5/BLZ 5.08
GTIN (EAN)	4008190142728
Qty.	100 items

WDU 1.5/BLZ 5.08

Weidmüller Interface GmbH & Co. KG
 Klingenbergstraße 26
 D-32758 Detmold
 Germany

www.weidmueller.com

Technical data

Approvals

Approvals



ROHS Conform

UL File Number Search [UL Website](#)

Certificate No. (UR) E60693

Dimensions and weights

Depth	37 mm	Depth (inches)	1.4567 inch
Depth including DIN rail	37.5 mm	Height	49 mm
Height (inches)	1.9291 inch	Width	5.08 mm
Width (inches)	0.2 inch	Net weight	4.55 g

Temperatures

Storage temperature	-25 °C...55 °C	Ambient temperature	-5 °C...40 °C
Continuous operating temp., min.	-50 °C	Continuous operating temp., max.	120 °C

Environmental Product Compliance

RoHS Compliance Status	Compliant without exemption		
REACH SVHC	No SVHC above 0.1 wt%		
Product Carbon Footprint	Cradle to gate	0,1 kg CO2 eq.	

Material data

Basic material	Wemid	Colour	dark beige
UL 94 flammability rating	V-0		

System specifications

Version	1 plug-in connection - 2 plug-in connections, for screwable cross-connection, One end without connector	End cover plate required	Yes
Number of potentials	1	Number of levels	1
Number of clamping points per level	3	Number of potentials per tier	1
Levels cross-connected internally	No	PE connection	No
Mounting rail	TS 35	N-function	No
PE function	No	PEN function	No

2 clampable conductors (H05V/H07V) with equal cross-section (rated connection)

Cross-section for connected wire, solid, two clampable wires, max.	2.5 mm ²	Cross-section for connected wire, solid, two clampable wires, min.	0.5 mm ²
Wire connection cross section, finely stranded with wire-end ferrules DIN 46228/1, 2 clampable wires, max.	1.5 mm ²	Wire connection cross section, finely stranded with wire-end ferrules DIN 46228/1, 2 clampable wires, min.	0.5 mm ²
Wire cross-section, finely stranded, two clampable wires, max.	1.5 mm ²	Wire connection cross section, finely stranded, two clampable wires, min.	0.5 mm ²

WDU 1.5/BLZ 5.08

Weidmüller Interface GmbH & Co. KG

 Klingenbergstraße 26
 D-32758 Detmold
 Germany

www.weidmueller.com

Technical data

Additional technical data

Open sides	right	Number of similar terminals	1
Explosion-tested version	No	Type of mounting	Snap-on

CSA rating data

Wire cross section max. (CSA)	12 AWG	Voltage size C (CSA)	300 V
Current size C (CSA)	10 A	Certificate No. (CSA)	12400-260
Voltage size B (CSA)	300 V	Current size B (CSA)	10 A
Voltage size D (CSA)	300 V	Current size D (CSA)	10 A
Wire cross section min. (CSA)	26 AWG		

Conductors for clamping (additional connection)

Conductor cross-section, flexible plus plastic collar DIN 46228/1, further connection, max. 2.5 mm²

Conductors for clamping (rated connection)

Gauge to IEC 60947-1	A3	Wire connection cross section AWG, max.	AWG 12
Connection direction	on side	Tightening torque, max.	0.6 Nm
Tightening torque, min.	0.4 Nm	Stripping length	10 mm
Type of connection	Screw connection	Number of connections	3
Clamping range, max.	4 mm ²	Clamping range, min.	0.13 mm ²
Clamping screw	M 2.5	Blade size	0.6 x 3.5 mm
Wire connection cross section AWG, min.	AWG 26	Wire connection cross-section, finely stranded with wire-end ferrules DIN 46228/4, max.	2.5 mm ²
Wire connection cross-section, finely stranded with wire-end ferrules DIN 46228/4, min.	0.5 mm ²	Wire connection cross-section, finely stranded with wire-end ferrules DIN 46228/1, max.	2.5 mm ²
Wire connection cross-section, finely stranded with wire-end ferrules DIN 46228/1, min.	0.5 mm ²	Wire connection cross section, finely stranded, max.	4 mm ²
Wire connection cross section, finely stranded, min.	0.5 mm ²	Connection cross-section, stranded, max.	4 mm ²
Connection cross-section, stranded, min.	1.5 mm ²	Torque level with DMS electric screwdriver	1
Wire connection cross-section, solid core, max.	4 mm ²	Wire connection cross-section, solid core, min.	0.5 mm ²

Dimensions

TS 35 offset	31.5 mm
--------------	---------

General

Wire connection cross section AWG, max.	AWG 12	Wire connection cross section AWG, min.	AWG 26
Standards	IEC 61210, In accordance with IEC 60947-7-1	Mounting rail	TS 35

Rating data

Rated cross-section	1.5 mm ²	Rated voltage	250 V
Rated DC voltage	250 V	Nominal current	16 A

WDU 1.5/BLZ 5.08

Weidmüller Interface GmbH & Co. KG
 Klingenbergstraße 26
 D-32758 Detmold
 Germany

www.weidmueller.com

Technical data

Current at maximum wires	16 A	Standards	IEC 61210, In accordance with IEC 60947-7-1
Volume resistance according to IEC 60947-7-x	1.83 mΩ	Rated impulse withstand voltage	4 kV
Power loss in accordance with IEC 60947-7-x	0.56 W	Pollution severity	3

UL rating data

Voltage size B (UR)	300 V	Current size B (UR)	20 A
Conductor size Factory wiring max. (UR)	12 AWG	Current size D (UR)	5 A
Current size C (UR)	20 A	Voltage size C (UR)	300 V
Conductor size Factory wiring min. (UR)	26 AWG	Certificate No. (UR)	E60693
Conductor size Field wiring min. (UR)	22 AWG	Voltage size D (UR)	600 V
Conductor size Field wiring max. (UR)	12 AWG		

Classifications

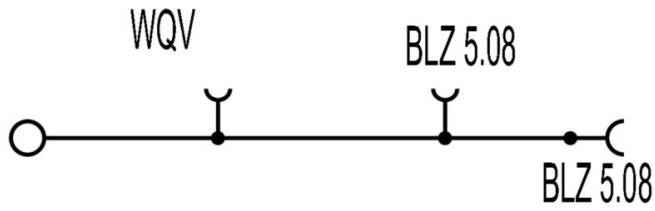
ETIM 8.0	EC000897	ETIM 9.0	EC000897
ETIM 10.0	EC000897	ECLASS 14.0	27-25-01-01
ECLASS 15.0	27-25-01-01		

WDU 1.5/BLZ 5.08

Weidmüller Interface GmbH & Co. KG
Klingenbergstraße 26
D-32758 Detmold
Germany

www.weidmueller.com

Drawings



WDU 1.5/BLZ 5.08

Weidmüller Interface GmbH & Co. KG
Klingenbergstraße 26
D-32758 Detmold
Germany

www.weidmueller.com

Accessories

End plates and partition plates



Partition plates and end plates are essential accessories for terminal blocks. Partition plates provide optical and electrical separation of different potentials and functional groups, increasing safety and ensuring a clear structure inside the control cabinet. End plates close the terminal block row on the sides, protect against contact with live parts, and ensure a clean, stable finish. Both components are precisely matched to the respective Weidmüller terminal block series, contributing to safe, compliant, and professional wiring.

General ordering data

Type	WAP WDU1.5/BLZ	Version
Order No.	1577330000	End plate for terminals, dark beige, Height: 45.4 mm, Width: 2.5 mm,
GTIN (EAN)	4008190127046	V-0, Wemid, Snap-on: No
Qty.	50 ST	
Type	WAP WDU1.5/BLZ/ZA	Version
Order No.	1577320000	End plate for terminals, dark beige, Height: 45.4 mm, Width: 2.5 mm,
GTIN (EAN)	4008190073770	V-0, Wemid, Snap-on: No
Qty.	50 ST	

End bracket

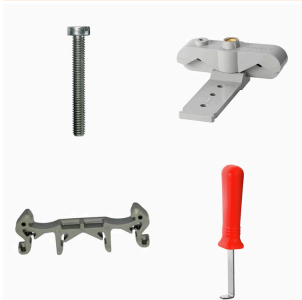


Weidmüller's range of products includes end brackets that guarantee a permanent, reliable mounting on the terminal rail and prevent sliding. Versions with and without screws are available. The end brackets include marking options, also for group markers, and also a test plug holder.

General ordering data

Type	WEW 35/2	Version
Order No.	1061200000	End bracket, dark beige, TS 35, HB, Wemid, Width: 8 mm, 100 °C
GTIN (EAN)	4008190030230	
Qty.	50 ST	

Mounting support



We offer a broad portfolio of mounting support for easy handling and supplementation of our products. From various tools to insulating sleeves and various screws, our components are matched to each other down to the last detail and thus facilitate assembly in compliance with the respective standards and protective regulations.

WDU 1.5/BLZ 5.08

Weidmüller Interface GmbH & Co. KG
 Klingenbergstraße 26
 D-32758 Detmold
 Germany

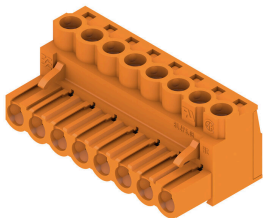
www.weidmueller.com

Accessories

General ordering data

Type	WBB WDU1.5/BL...	Version
Order No.	1068160000	Partition plate (terminal), orange, Height: 45.4 mm, Width: 5 mm, V-2,
GTIN (EAN)	4008190117191	PA 66
Qty.	10 ST	
Type	WBB ZA WDU1.5/BL 10/10	Version
Order No.	1068260000	Partition plate (terminal), orange, Height: 45.4 mm, Width: 5 mm, V-2,
GTIN (EAN)	4008190015657	PA 66
Qty.	10 ST	

BLZP 5.08HC/180 SN



Female plug with clamping-yoke screw system for connecting wires with straight (180°) outlet direction. The female connectors provide space for labelling and can be coded. Fastened by means of a flange or release latch. The also provide an integrated plus/minus screw, protection against faulty insertion of the wire, and they are delivered with open clamping yokes. HC = High Current.

General ordering data

Type	BLZP 5.08HC/04/180 SN O...	Version
Order No.	1943600000	PCB plug-in connector, female plug, 5.08 mm, Number of poles: 4,
GTIN (EAN)	4032248617593	180°, Clamping yoke connection, Clamping range, max. : 4 mm ² , Box
Qty.	90 ST	
Type	BLZP 5.08HC/06/180 SN O...	Version
Order No.	1943620000	PCB plug-in connector, female plug, 5.08 mm, Number of poles: 6,
GTIN (EAN)	4032248617616	180°, Clamping yoke connection, Clamping range, max. : 4 mm ² , Box
Qty.	60 ST	
Type	BLZP 5.08HC/08/180 SN O...	Version
Order No.	1943640000	PCB plug-in connector, female plug, 5.08 mm, Number of poles: 8,
GTIN (EAN)	4032248617647	180°, Clamping yoke connection, Clamping range, max. : 4 mm ² , Box
Qty.	42 ST	

BLZP 5.08HC/180F SN



Female plug with clamping-yoke screw system for connecting wires with straight (180°) outlet direction. The female connectors provide space for labelling and can be coded. Fastened by means of a flange or release latch. The also provide an integrated plus/minus screw, protection against faulty insertion of the wire, and they are delivered with open clamping yokes. HC = High Current.

General ordering data

Type	BLZP 5.08HC/04/180F SN ...	Version
Order No.	1944110000	PCB plug-in connector, female plug, 5.08 mm, Number of poles: 4,
GTIN (EAN)	4032248617494	180°, Clamping yoke connection, Clamping range, max. : 4 mm ² , Box
Qty.	60 ST	

WDU 1.5/BLZ 5.08

Weidmüller Interface GmbH & Co. KG

 Klingenbergstraße 26
 D-32758 Detmold
 Germany

www.weidmueller.com

Accessories

Type	BLZP 5.08HC/06/180F SN ...	Version
Order No.	1944130000	PCB plug-in connector, female plug, 5.08 mm, Number of poles: 6,
GTIN (EAN)	4032248618712	180°, Clamping yoke connection, Clamping range, max. : 4 mm ² , Box
Qty.	42 ST	
Type	BLZP 5.08HC/08/180F SN ...	Version
Order No.	1944150000	PCB plug-in connector, female plug, 5.08 mm, Number of poles: 8,
GTIN (EAN)	4032248618736	180°, Clamping yoke connection, Clamping range, max. : 4 mm ² , Box
Qty.	36 ST	

Blank



The Dekafix (DEK) marker is the universal marker for all conductor and plug-in connectors as well as for electronic sub-assemblies. The system is ideal for short number sequences and covers a wide range of ready-printed markers.

Strips for fast installation in only one work step. The printing is easy to read, rich in contrast and available in various widths.

- Large range of ready-to-use markers
 - Strips for fast installation
 - Terminal markers, suitable for all Weidmüller cable connectors
 - Available as blank MultiCard or with standard printing
- For custom printing: Please send us a file of our labeling software M-Print PRO or M-Print PRO Online (without installation) for your labeling specifications.

General ordering data

Type	DEK 5/5 MC NE WS	Version
Order No.	1609801044	Dekafix, Terminal marker, 5 x 5 mm, Pitch in mm (P): 5.00
GTIN (EAN)	4008190397111	Weidmueller, white
Qty.	1000 ST	

Custom printing



WS markers are the perfect match for the W-series connectors. Thanks to their system compatibility, the WS tags can also be used with the I-series and the Z-series. The large marking surfaces do not only permit long character strings but also multi-line text.

WS markers are ideal for labels with long, customised character strings. Thanks to the proven MultiCard format, printing with PrintJet CONNECT oder/or Plotter is possible.

- Can be fitted in strips or individually
- Markers in proven MultiCard format

For custom printing: Please send us a file of our labeling software M-Print PRO or M-Print PRO Online (without installation) for your labeling specifications.

WDU 1.5/BLZ 5.08

Weidmüller Interface GmbH & Co. KG
 Klingenbergstraße 26
 D-32758 Detmold
 Germany

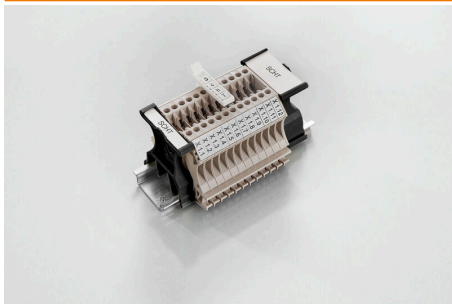
www.weidmueller.com

Accessories

General ordering data

Type	WS 12/5 MC SDR	Version	
Order No.	1609870000	WS, Terminal marker, 12 x 5 mm, Pitch in mm (P): 5.00 Weidmueller,	
GTIN (EAN)	4008190456641	Allen-Bradley, To customer specification	
Qty.	144 ST		

SchT group marker carrier



The SchT 5 S group tag carriers are clipped directly onto the TS 32 mounting rail (G-rail) or the TS 35 mounting rail (top-hat rail). It is therefore possible to label the terminal strip irrespective of the terminal and the type of terminal. SchT 5 and SchT 5 S are fitted with ESO 5, STR 5 protective strips.

The SchT 7 is a hinged group tag carrier for inlay tags which enables easy access to the clamping screw. The SchT 7 is fitted with ESO 7, STR 7 protective strips or DEK 5.

Inlay tags and protective strips can be found under "Accessories".

General ordering data

Type	SCHT 7	Version	
Order No.	0517960000	SCHT, Terminal marker, 39.3 x 8 mm, Pitch in mm (P): 7.00	
GTIN (EAN)	4008190001742	Weidmueller, white	
Qty.	20 ST		

ZGB pivotable group tag holder



The ZGB 15 is a hinged group tag carrier. The tag carrier can hold the dekafix 5, WS 12/5 terminal markers or the inlay tag ESO 15.

The ZGB 30 is a hinged group tag carrier. The tag carrier can hold the dekafix 5, WS 12/5 terminal markers or the inlay tag ESO 7.

Inlay tags and protective strips can be found under "Accessories".

General ordering data

Type	ZGB 15	Version	
Order No.	1636530000	Terminal markers, Terminal marker, 15 x 7 mm, Pitch in mm (P): 5.00	
GTIN (EAN)	4008190297053	Weidmueller, white	
Qty.	20 ST		
Type	ZGB 30	Version	
Order No.	1611930000	Terminal markers, Terminal marker, 32 x 7 mm, Pitch in mm (P): 5.00	
GTIN (EAN)	4008190002251	Weidmueller, white	
Qty.	20 ST		

WDU 1.5/BLZ 5.08

Weidmüller Interface GmbH & Co. KG
 Klingenbergstraße 26
 D-32758 Detmold
 Germany

www.weidmueller.com

Accessories

Marker holder

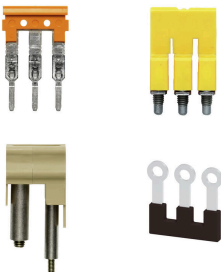


The marker holder offer the possibility of additional mounting of standard markers with a pitch of 5 or 5.1 mm. The angled holders can be optionally snapped together and could be mounted in all standard marking channels of the Klippon® Connect modular terminal blocks. Fitting marker types could be found under the respective accessories of the designation marking holder.

General ordering data

Type	BZT 1 WS 10/5	Version
Order No.	1805490000	Accessories, Marker holder
GTIN (EAN)	4032248270231	
Qty.	100 ST	
Type	BZT 1 ZA WS 10/5	Version
Order No.	1805520000	Accessories, Marker holder
GTIN (EAN)	4032248270248	
Qty.	100 ST	

Cross-connections



The distribution or multiplication of a potential to adjoining terminal blocks is realized via a cross-connection. Additional wiring effort can be easily avoided. Even if the poles are broken out, contact reliability in the terminal blocks is still ensured. Our portfolio offers pluggable and screwable cross-connection systems for modular terminal blocks.

General ordering data

Type	ZQV 2.5N/10	Version
Order No.	1527690000	Cross-connector (terminal), Plugged, orange, 24 A, Number of poles: 10, Pitch in mm (P): 5.10, Insulated: Yes, Width: 48.7 mm
GTIN (EAN)	4050118447989	
Qty.	20 ST	
Type	ZQV 2.5N/2	Version
Order No.	1527540000	Cross-connector (terminal), Plugged, orange, 24 A, Number of poles: 2, Pitch in mm (P): 5.10, Insulated: Yes, Width: 7.9 mm
GTIN (EAN)	4050118448467	
Qty.	60 ST	
Type	ZQV 2.5N/20	Version
Order No.	1527720000	Cross-connector (terminal), Plugged, orange, 24 A, Number of poles: 20, Pitch in mm (P): 5.10, Insulated: Yes, Width: 102 mm
GTIN (EAN)	4050118447972	
Qty.	20 ST	
Type	ZQV 2.5N/3	Version
Order No.	1527570000	Cross-connector (terminal), Plugged, orange, 24 A, Number of poles: 3, Pitch in mm (P): 5.10, Insulated: Yes, Width: 13 mm
GTIN (EAN)	4050118448450	
Qty.	60 ST	

WDU 1.5/BLZ 5.08

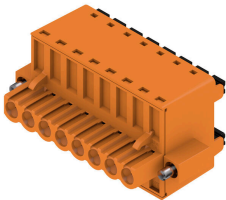
Weidmüller Interface GmbH & Co. KG
 Klingenbergstraße 26
 D-32758 Detmold
 Germany

www.weidmueller.com

Accessories

Type	ZQV 2.5N/4	Version
Order No.	1527590000	Cross-connector (terminal), Plugged, orange, 24 A, Number of poles:
GTIN (EAN)	4050118448443	4, Pitch in mm (P): 5.10, Insulated: Yes, Width: 18.1 mm
Qty.	60 ST	
Type	ZQV 2.5N/5	Version
Order No.	1527620000	Cross-connector (terminal), Plugged, orange, 24 A, Number of poles:
GTIN (EAN)	4050118448436	5, Pitch in mm (P): 5.10, Insulated: Yes, Width: 23.2 mm
Qty.	20 ST	
Type	ZQV 2.5N/6	Version
Order No.	1527630000	Cross-connector (terminal), Plugged, orange, 24 A, Number of poles:
GTIN (EAN)	4050118448429	6, Pitch in mm (P): 5.10, Insulated: Yes, Width: 28.3 mm
Qty.	20 ST	
Type	ZQV 2.5N/7	Version
Order No.	1527640000	Cross-connector (terminal), Plugged, orange, 24 A, Number of poles:
GTIN (EAN)	4050118448412	7, Pitch in mm (P): 5.10, Insulated: Yes, Width: 33.4 mm
Qty.	20 ST	
Type	ZQV 2.5N/8	Version
Order No.	1527670000	Cross-connector (terminal), Plugged, orange, 24 A, Number of poles:
GTIN (EAN)	4050118448405	8, Pitch in mm (P): 5.10, Insulated: Yes, Width: 38.5 mm
Qty.	20 ST	
Type	ZQV 2.5N/9	Version
Order No.	1527680000	Cross-connector (terminal), Plugged, orange, 24 A, Number of poles:
GTIN (EAN)	4050118447996	9, Pitch in mm (P): 5.10, Insulated: Yes, Width: 43.6 mm
Qty.	20 ST	

BLDF 5.08/180F SN



The powerful daisy-chain solution for high-performance signal bus applications is also suitable for 400V auxiliary power chains with 18.5A current-carrying capacity. The large clamping capacity (up to 2.5mm² wire cross-sections) is particularly beneficial for long bus cables or high currents because of the low voltage drop. Four flange variations, including the patented release latch, allow for user-friendly unplugging designs.

General ordering data

Type	BLDF 5.08/08/180F SN OR...	Version
Order No.	1065120000	PCB plug-in connector, female plug, 5.08 mm, Number of poles: 8,
GTIN (EAN)	4032248817658	180°, PUSH IN with actuator, Clamping range, max. : 3.31 mm ² , Box
Qty.	24 ST	
Type	BLDF 5.08/08/180F SN BK...	Version
Order No.	1001000000	PCB plug-in connector, female plug, 5.08 mm, Number of poles: 8,
GTIN (EAN)	4032248817559	180°, PUSH IN with actuator, Clamping range, max. : 3.31 mm ² , Box
Qty.	24 ST	
Type	BLDF 5.08/07/180F SN OR...	Version
Order No.	1065110000	PCB plug-in connector, female plug, 5.08 mm, Number of poles: 7,
GTIN (EAN)	4032248817832	180°, PUSH IN with actuator, Clamping range, max. : 3.31 mm ² , Box
Qty.	24 ST	

WDU 1.5/BLZ 5.08

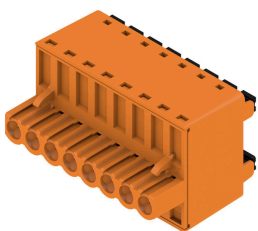
Weidmüller Interface GmbH & Co. KG
 Klingenbergstraße 26
 D-32758 Detmold
 Germany

www.weidmueller.com

Accessories

Type	BLDF 5.08/07/180F SN BK...	Version
Order No.	1000990000	PCB plug-in connector, female plug, 5.08 mm, Number of poles: 7,
GTIN (EAN)	4032248817474	180°, PUSH IN with actuator, Clamping range, max. : 3.31 mm², Box
Qty.	24 ST	
Type	BLDF 5.08/06/180F SN BK...	Version
Order No.	1000980000	PCB plug-in connector, female plug, 5.08 mm, Number of poles: 6,
GTIN (EAN)	4032248817375	180°, PUSH IN with actuator, Clamping range, max. : 3.31 mm², Box
Qty.	28 ST	
Type	BLDF 5.08/05/180F SN OR...	Version
Order No.	1065080000	PCB plug-in connector, female plug, 5.08 mm, Number of poles: 5,
GTIN (EAN)	4032248817856	180°, PUSH IN with actuator, Clamping range, max. : 3.31 mm², Box
Qty.	32 ST	
Type	BLDF 5.08/05/180F SN BK...	Version
Order No.	1000970000	PCB plug-in connector, female plug, 5.08 mm, Number of poles: 5,
GTIN (EAN)	4032248817337	180°, PUSH IN with actuator, Clamping range, max. : 3.31 mm², Box
Qty.	32 ST	
Type	BLDF 5.08/04/180F SN OR...	Version
Order No.	1059420000	PCB plug-in connector, female plug, 5.08 mm, Number of poles: 4,
GTIN (EAN)	4032248817894	180°, PUSH IN with actuator, Clamping range, max. : 3.31 mm², Box
Qty.	40 ST	
Type	BLDF 5.08/04/180F SN BK...	Version
Order No.	1000960000	PCB plug-in connector, female plug, 5.08 mm, Number of poles: 4,
GTIN (EAN)	4032248817344	180°, PUSH IN with actuator, Clamping range, max. : 3.31 mm², Box
Qty.	40 ST	
Type	BLDF 5.08/03/180F SN OR...	Version
Order No.	1012060000	PCB plug-in connector, female plug, 5.08 mm, Number of poles: 3,
GTIN (EAN)	4032248818037	180°, PUSH IN with actuator, Clamping range, max. : 3.31 mm², Box
Qty.	48 ST	
Type	BLDF 5.08/03/180F SN BK...	Version
Order No.	1000950000	PCB plug-in connector, female plug, 5.08 mm, Number of poles: 3,
GTIN (EAN)	4032248817085	180°, PUSH IN with actuator, Clamping range, max. : 3.31 mm², Box
Qty.	48 ST	
Type	BLDF 5.08/02/180F SN OR...	Version
Order No.	1001220000	PCB plug-in connector, female plug, 5.08 mm, Number of poles: 2,
GTIN (EAN)	4032248817955	180°, PUSH IN with actuator, Clamping range, max. : 3.31 mm², Box
Qty.	60 ST	
Type	BLDF 5.08/02/180F SN BK...	Version
Order No.	1000930000	PCB plug-in connector, female plug, 5.08 mm, Number of poles: 2,
GTIN (EAN)	4032248817252	180°, PUSH IN with actuator, Clamping range, max. : 3.31 mm², Box
Qty.	60 ST	

BLDF 5.08/180 SN



The powerful daisy-chain solution for high-performance signal bus applications is also suitable for 400V auxiliary power chains with 18.5A current-carrying capacity. The large clamping capacity (up to 2.5mm² wire cross-sections) is particularly beneficial for long bus cables or high currents because of the low voltage drop. Four flange variations, including the patented release latch, allow for user-friendly unplugging designs.

WDU 1.5/BLZ 5.08

Weidmüller Interface GmbH & Co. KG
 Klingenbergstraße 26
 D-32758 Detmold
 Germany

www.weidmueller.com

Accessories

General ordering data

Type	BLDF 5.08/02/180 SN BK ...	Version
Order No.	1000860000	PCB plug-in connector, female plug, 5.08 mm, Number of poles: 2,
GTIN (EAN)	4032248817030	180°, PUSH IN with actuator, Clamping range, max. : 3.31 mm², Box
Qty.	120 ST	
Type	BLDF 5.08/02/180 SN OR ...	Version
Order No.	1001150000	PCB plug-in connector, female plug, 5.08 mm, Number of poles: 2,
GTIN (EAN)	4032248818020	180°, PUSH IN with actuator, Clamping range, max. : 3.31 mm², Box
Qty.	120 ST	
Type	BLDF 5.08/03/180 SN BK ...	Version
Order No.	1000870000	PCB plug-in connector, female plug, 5.08 mm, Number of poles: 3,
GTIN (EAN)	4032248817276	180°, PUSH IN with actuator, Clamping range, max. : 3.31 mm², Box
Qty.	80 ST	
Type	BLDF 5.08/03/180 SN OR ...	Version
Order No.	1001160000	PCB plug-in connector, female plug, 5.08 mm, Number of poles: 3,
GTIN (EAN)	4032248817726	180°, PUSH IN with actuator, Clamping range, max. : 3.31 mm², Box
Qty.	80 ST	
Type	BLDF 5.08/03/180 SN OR ...	Version
Order No.	2759190000	PCB plug-in connector, female plug, 5.08 mm, Number of poles: 3,
GTIN (EAN)	4064675007289	180°, PUSH IN with actuator, Tension-clamp connection, Clamping range, max. : 3.31 mm², Box
Qty.	80 ST	
Type	BLDF 5.08/04/180 SN BK ...	Version
Order No.	1000880000	PCB plug-in connector, female plug, 5.08 mm, Number of poles: 4,
GTIN (EAN)	4032248817269	180°, PUSH IN with actuator, Clamping range, max. : 3.31 mm², Box
Qty.	60 ST	
Type	BLDF 5.08/04/180 SN OR ...	Version
Order No.	1001170000	PCB plug-in connector, female plug, 5.08 mm, Number of poles: 4,
GTIN (EAN)	4032248818075	180°, PUSH IN with actuator, Clamping range, max. : 3.31 mm², Box
Qty.	60 ST	
Type	BLDF 5.08/05/180 SN BK ...	Version
Order No.	1000890000	PCB plug-in connector, female plug, 5.08 mm, Number of poles: 5,
GTIN (EAN)	4032248817078	180°, PUSH IN with actuator, Clamping range, max. : 3.31 mm², Box
Qty.	48 ST	
Type	BLDF 5.08/05/180 SN OR ...	Version
Order No.	1001180000	PCB plug-in connector, female plug, 5.08 mm, Number of poles: 5,
GTIN (EAN)	4032248818228	180°, PUSH IN with actuator, Clamping range, max. : 3.31 mm², Box
Qty.	48 ST	
Type	BLDF 5.08/06/180 SN BK ...	Version
Order No.	1000900000	PCB plug-in connector, female plug, 5.08 mm, Number of poles: 6,
GTIN (EAN)	4032248817412	180°, PUSH IN with actuator, Clamping range, max. : 3.31 mm², Box
Qty.	40 ST	
Type	BLDF 5.08/06/180 SN OR ...	Version
Order No.	1001190000	PCB plug-in connector, female plug, 5.08 mm, Number of poles: 6,
GTIN (EAN)	4032248818174	180°, PUSH IN with actuator, Clamping range, max. : 3.31 mm², Box
Qty.	40 ST	
Type	BLDF 5.08/07/180 SN BK ...	Version
Order No.	1000910000	PCB plug-in connector, female plug, 5.08 mm, Number of poles: 7,
GTIN (EAN)	4032248817450	180°, PUSH IN with actuator, Clamping range, max. : 3.31 mm², Box
Qty.	32 ST	
Type	BLDF 5.08/07/180 SN OR ...	Version
Order No.	1001200000	PCB plug-in connector, female plug, 5.08 mm, Number of poles: 7,
GTIN (EAN)	4032248817535	180°, PUSH IN with actuator, Clamping range, max. : 3.31 mm², Box
Qty.	32 ST	

WDU 1.5/BLZ 5.08

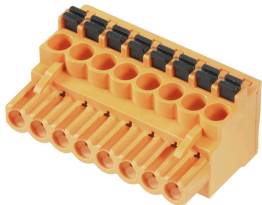
Weidmüller Interface GmbH & Co. KG
 Klingenbergstraße 26
 D-32758 Detmold
 Germany

www.weidmueller.com

Accessories

Type	BLDF 5.08/08/180 SN BK ...	Version
Order No.	1000920000	PCB plug-in connector, female plug, 5.08 mm, Number of poles: 8,
GTIN (EAN)	4032248817092	180°, PUSH IN with actuator, Clamping range, max. : 3.31 mm², Box
Qty.	28 ST	
Type	BLDF 5.08/08/180 SN OR ...	Version
Order No.	1001210000	PCB plug-in connector, female plug, 5.08 mm, Number of poles: 8,
GTIN (EAN)	4032248817573	180°, PUSH IN with actuator, Clamping range, max. : 3.31 mm², Box
Qty.	28 ST	

BLF 5.08HC/90 SN



Just as reliable as the millionfold proven original and featuring innovative details:

The BLF 5.08HC PUSH IN version of the BLZP 5.08HC female connector is not only different in terms of connection system; it also has a more compact design. Weidmüller's innovative PUSH IN spring connection system stands for the future of easy and tool-free wire connection. HC = High Current.

In terms of versatility, the BLF 5.08HC offers just as much as the version which served as a model:

- 3 tested-and-proven wire outlet directions provide the usual flexibility for application-specific design
- 4 flange variations and the patented release latch allow the locking concept to be based on the requirements of the user
- Use the BLF 5.08HC and SL 5.08HC plug combination to reach the max. rated specifications

General ordering data

Type	BLF 5.08HC/02/90 SN BK ...	Version
Order No.	1000030001	PCB plug-in connector, female plug, 5.08 mm, Number of poles: 2,
GTIN (EAN)	4032248689965	90°, PUSH IN with actuator, Clamping range, max. : 3.31 mm², Box
Qty.	180 ST	
Type	BLF 5.08HC/02/90 SN OR ...	Version
Order No.	1001530000	PCB plug-in connector, female plug, 5.08 mm, Number of poles: 2,
GTIN (EAN)	4032248693337	90°, PUSH IN with actuator, Clamping range, max. : 3.31 mm², Box
Qty.	180 ST	
Type	BLF 5.08HC/03/90 SN BK ...	Version
Order No.	1000040001	PCB plug-in connector, female plug, 5.08 mm, Number of poles: 3,
GTIN (EAN)	4032248689972	90°, PUSH IN with actuator, Clamping range, max. : 3.31 mm², Box
Qty.	120 ST	
Type	BLF 5.08HC/03/90 SN OR ...	Version
Order No.	1001540000	PCB plug-in connector, female plug, 5.08 mm, Number of poles: 3,
GTIN (EAN)	4032248693344	90°, PUSH IN with actuator, Clamping range, max. : 3.31 mm², Box
Qty.	120 ST	
Type	BLF 5.08HC/03/90 SN OR ...	Version
Order No.	2764380000	PCB plug-in connector, female plug, 5.08 mm, Number of poles: 3,
GTIN (EAN)	4064675017332	90°, PUSH IN with actuator, Tension-clamp connection, Clamping range, max. : 3.31 mm², Box
Qty.	120 ST	
Type	BLF 5.08HC/03/90 SN OR ...	Version
Order No.	2766910000	PCB plug-in connector, female plug, 5.08 mm, Number of poles: 3,
GTIN (EAN)	4064675022527	90°, PUSH IN with actuator, Clamping range, max. : 3.31 mm², Box
Qty.	120 ST	

WDU 1.5/BLZ 5.08

Weidmüller Interface GmbH & Co. KG
 Klingenbergstraße 26
 D-32758 Detmold
 Germany

www.weidmueller.com

Accessories

Type	BLF 5.08HC/04/90 SN BK ...	Version
Order No.	1000050001	PCB plug-in connector, female plug, 5.08 mm, Number of poles: 4,
GTIN (EAN)	4032248689989	90°, PUSH IN with actuator, Clamping range, max. : 3.31 mm², Box
Qty.	90 ST	
Type	BLF 5.08HC/04/90 SN OR ...	Version
Order No.	1001550000	PCB plug-in connector, female plug, 5.08 mm, Number of poles: 4,
GTIN (EAN)	4032248693351	90°, PUSH IN with actuator, Clamping range, max. : 3.31 mm², Box
Qty.	90 ST	
Type	BLF 5.08HC/05/90 SN BK ...	Version
Order No.	1000060001	PCB plug-in connector, female plug, 5.08 mm, Number of poles: 5,
GTIN (EAN)	4032248689996	90°, PUSH IN with actuator, Clamping range, max. : 3.31 mm², Box
Qty.	72 ST	
Type	BLF 5.08HC/05/90 SN OR ...	Version
Order No.	1001560000	PCB plug-in connector, female plug, 5.08 mm, Number of poles: 5,
GTIN (EAN)	4032248693368	90°, PUSH IN with actuator, Clamping range, max. : 3.31 mm², Box
Qty.	72 ST	
Type	BLF 5.08HC/06/90 SN BK ...	Version
Order No.	1000070001	PCB plug-in connector, female plug, 5.08 mm, Number of poles: 6,
GTIN (EAN)	4032248690008	90°, PUSH IN with actuator, Clamping range, max. : 3.31 mm², Box
Qty.	60 ST	
Type	BLF 5.08HC/06/90 SN OR ...	Version
Order No.	1001570000	PCB plug-in connector, female plug, 5.08 mm, Number of poles: 6,
GTIN (EAN)	4032248693375	90°, PUSH IN with actuator, Clamping range, max. : 3.31 mm², Box
Qty.	60 ST	
Type	BLF 5.08HC/07/90 SN OR ...	Version
Order No.	1001580000	PCB plug-in connector, female plug, 5.08 mm, Number of poles: 7,
GTIN (EAN)	4032248693382	90°, PUSH IN with actuator, Clamping range, max. : 3.31 mm², Box
Qty.	48 ST	
Type	BLF 5.08HC/08/90 SN BK ...	Version
Order No.	1000090001	PCB plug-in connector, female plug, 5.08 mm, Number of poles: 8,
GTIN (EAN)	4032248690022	90°, PUSH IN with actuator, Clamping range, max. : 3.31 mm², Box
Qty.	42 ST	
Type	BLF 5.08HC/08/90 SN OR ...	Version
Order No.	1001590000	PCB plug-in connector, female plug, 5.08 mm, Number of poles: 8,
GTIN (EAN)	4032248693399	90°, PUSH IN with actuator, Clamping range, max. : 3.31 mm², Box
Qty.	42 ST	
Type	BLF 5.08HC/09/90 SN OR ...	Version
Order No.	1001600000	PCB plug-in connector, female plug, 5.08 mm, Number of poles: 9,
GTIN (EAN)	4032248693405	90°, PUSH IN with actuator, Clamping range, max. : 3.31 mm², Box
Qty.	36 ST	
Type	BLF 5.08HC/10/90 SN BK ...	Version
Order No.	1000110001	PCB plug-in connector, female plug, 5.08 mm, Number of poles: 10,
GTIN (EAN)	4032248690046	90°, PUSH IN with actuator, Clamping range, max. : 3.31 mm², Box
Qty.	36 ST	
Type	BLF 5.08HC/10/90 SN OR ...	Version
Order No.	1001610000	PCB plug-in connector, female plug, 5.08 mm, Number of poles: 10,
GTIN (EAN)	4032248693412	90°, PUSH IN with actuator, Clamping range, max. : 3.31 mm², Box
Qty.	36 ST	
Type	BLF 5.08HC/11/90 SN BK ...	Version
Order No.	1000120001	PCB plug-in connector, female plug, 5.08 mm, Number of poles: 11,
GTIN (EAN)	4032248690060	90°, PUSH IN with actuator, Clamping range, max. : 3.31 mm², Box
Qty.	30 ST	

WDU 1.5/BLZ 5.08

Weidmüller Interface GmbH & Co. KG
 Klingenbergstraße 26
 D-32758 Detmold
 Germany

www.weidmueller.com

Accessories

Type	BLF 5.08HC/11/90 SN OR ...	Version
Order No.	1001620000	PCB plug-in connector, female plug, 5.08 mm, Number of poles: 11,
GTIN (EAN)	4032248693429	90°, PUSH IN with actuator, Clamping range, max. : 3.31 mm², Box
Qty.	30 ST	
Type	BLF 5.08HC/12/90 SN BK ...	Version
Order No.	1000130001	PCB plug-in connector, female plug, 5.08 mm, Number of poles: 12,
GTIN (EAN)	4032248690084	90°, PUSH IN with actuator, Clamping range, max. : 3.31 mm², Box
Qty.	30 ST	
Type	BLF 5.08HC/12/90 SN OR ...	Version
Order No.	1001630000	PCB plug-in connector, female plug, 5.08 mm, Number of poles: 12,
GTIN (EAN)	4032248693436	90°, PUSH IN with actuator, Clamping range, max. : 3.31 mm², Box
Qty.	30 ST	
Type	BLF 5.08HC/13/90 SN BK ...	Version
Order No.	1000140001	PCB plug-in connector, female plug, 5.08 mm, Number of poles: 13,
GTIN (EAN)	4032248690091	90°, PUSH IN with actuator, Clamping range, max. : 3.31 mm², Box
Qty.	24 ST	
Type	BLF 5.08HC/13/90 SN OR ...	Version
Order No.	1001640000	PCB plug-in connector, female plug, 5.08 mm, Number of poles: 13,
GTIN (EAN)	4032248693443	90°, PUSH IN with actuator, Clamping range, max. : 3.31 mm², Box
Qty.	24 ST	
Type	BLF 5.08HC/14/90 SN BK ...	Version
Order No.	1000150001	PCB plug-in connector, female plug, 5.08 mm, Number of poles: 14,
GTIN (EAN)	4032248690107	90°, PUSH IN with actuator, Clamping range, max. : 3.31 mm², Box
Qty.	24 ST	
Type	BLF 5.08HC/14/90 SN OR ...	Version
Order No.	1001650000	PCB plug-in connector, female plug, 5.08 mm, Number of poles: 14,
GTIN (EAN)	4032248693450	90°, PUSH IN with actuator, Clamping range, max. : 3.31 mm², Box
Qty.	24 ST	
Type	BLF 5.08HC/15/90 SN OR ...	Version
Order No.	1001660000	PCB plug-in connector, female plug, 5.08 mm, Number of poles: 15,
GTIN (EAN)	4032248693467	90°, PUSH IN with actuator, Clamping range, max. : 3.31 mm², Box
Qty.	24 ST	
Type	BLF 5.08HC/16/90 SN BK ...	Version
Order No.	1000170001	PCB plug-in connector, female plug, 5.08 mm, Number of poles: 16,
GTIN (EAN)	4032248690121	90°, PUSH IN with actuator, Clamping range, max. : 3.31 mm², Box
Qty.	18 ST	
Type	BLF 5.08HC/16/90 SN OR ...	Version
Order No.	1001670000	PCB plug-in connector, female plug, 5.08 mm, Number of poles: 16,
GTIN (EAN)	4032248693474	90°, PUSH IN with actuator, Clamping range, max. : 3.31 mm², Box
Qty.	18 ST	
Type	BLF 5.08HC/17/90 SN BK ...	Version
Order No.	1000180001	PCB plug-in connector, female plug, 5.08 mm, Number of poles: 17,
GTIN (EAN)	4032248690138	90°, PUSH IN with actuator, Clamping range, max. : 3.31 mm², Box
Qty.	18 ST	
Type	BLF 5.08HC/17/90 SN OR ...	Version
Order No.	1001680000	PCB plug-in connector, female plug, 5.08 mm, Number of poles: 17,
GTIN (EAN)	4032248693481	90°, PUSH IN with actuator, Clamping range, max. : 3.31 mm², Box
Qty.	18 ST	
Type	BLF 5.08HC/18/90 SN BK ...	Version
Order No.	1000190001	PCB plug-in connector, female plug, 5.08 mm, Number of poles: 18,
GTIN (EAN)	4032248690145	90°, PUSH IN with actuator, Clamping range, max. : 3.31 mm², Box
Qty.	18 ST	

WDU 1.5/BLZ 5.08

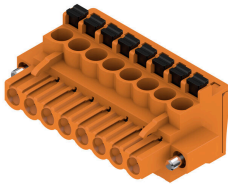
Weidmüller Interface GmbH & Co. KG
Klingenbergstraße 26
D-32758 Detmold
Germany

www.weidmueller.com

Accessories

Type	BLF 5.08HC/18/90 SN OR ...	Version
Order No.	1001690000	PCB plug-in connector, female plug, 5.08 mm, Number of poles: 18,
GTIN (EAN)	4032248693498	90°, PUSH IN with actuator, Clamping range, max. : 3.31 mm², Box
Qty.	18 ST	
Type	BLF 5.08HC/19/90 SN BK ...	Version
Order No.	1000200001	PCB plug-in connector, female plug, 5.08 mm, Number of poles: 19,
GTIN (EAN)	4032248690152	90°, PUSH IN with actuator, Clamping range, max. : 3.31 mm², Box
Qty.	18 ST	
Type	BLF 5.08HC/19/90 SN OR ...	Version
Order No.	1001700000	PCB plug-in connector, female plug, 5.08 mm, Number of poles: 19,
GTIN (EAN)	4032248693504	90°, PUSH IN with actuator, Clamping range, max. : 3.31 mm², Box
Qty.	18 ST	
Type	BLF 5.08HC/20/90 SN OR ...	Version
Order No.	1001710000	PCB plug-in connector, female plug, 5.08 mm, Number of poles: 20,
GTIN (EAN)	4032248693511	90°, PUSH IN with actuator, Clamping range, max. : 3.31 mm², Box
Qty.	18 ST	

BLF 5.08HC/90F SN



Just as reliable as the millionfold proven original and featuring innovative details:

The BLF 5.08HC PUSH IN version of the BLZP 5.08HC female connector is not only different in terms of connection system; it also has a more compact design. Weidmüller's innovative PUSH IN spring connection system stands for the future of easy and tool-free wire connection. HC = High Current.

In terms of versatility, the BLF 5.08HC offers just as much as the version which served as a model:

- 3 tested-and-proven wire outlet directions provide the usual flexibility for application-specific design
- 4 flange variations and the patented release latch allow the locking concept to be based on the requirements of the user
- Use the BLF 5.08HC and SL 5.08HC plug combination to reach the max. rated specifications

General ordering data

Type	BLF 5.08HC/02/90F SN BK...	Version
Order No.	1000220001	PCB plug-in connector, female plug, 5.08 mm, Number of poles: 2,
GTIN (EAN)	4032248690183	90°, PUSH IN with actuator, Clamping range, max. : 3.31 mm², Box
Qty.	90 ST	
Type	BLF 5.08HC/02/90F SN OR...	Version
Order No.	1002090000	PCB plug-in connector, female plug, 5.08 mm, Number of poles: 2,
GTIN (EAN)	4032248694044	90°, PUSH IN with actuator, Clamping range, max. : 3.31 mm², Box
Qty.	90 ST	
Type	BLF 5.08HC/03/90F SN BK...	Version
Order No.	1000230001	PCB plug-in connector, female plug, 5.08 mm, Number of poles: 3,
GTIN (EAN)	4032248690190	90°, PUSH IN with actuator, Clamping range, max. : 3.31 mm², Box
Qty.	72 ST	
Type	BLF 5.08HC/03/90F SN OR...	Version
Order No.	1002100000	PCB plug-in connector, female plug, 5.08 mm, Number of poles: 3,
GTIN (EAN)	4032248694051	90°, PUSH IN with actuator, Clamping range, max. : 3.31 mm², Box
Qty.	72 ST	

WDU 1.5/BLZ 5.08

Weidmüller Interface GmbH & Co. KG
 Klingenbergstraße 26
 D-32758 Detmold
 Germany

www.weidmueller.com

Accessories

Type	BLF 5.08HC/04/90F SN BK...	Version
Order No.	1000240001	PCB plug-in connector, female plug, 5.08 mm, Number of poles: 4,
GTIN (EAN)	4032248690206	90°, PUSH IN with actuator, Clamping range, max. : 3.31 mm², Box
Qty.	60 ST	
Type	BLF 5.08HC/04/90F SN OR...	Version
Order No.	1002110000	PCB plug-in connector, female plug, 5.08 mm, Number of poles: 4,
GTIN (EAN)	4032248694068	90°, PUSH IN with actuator, Clamping range, max. : 3.31 mm², Box
Qty.	60 ST	
Type	BLF 5.08HC/05/90F SN OR...	Version
Order No.	1002120000	PCB plug-in connector, female plug, 5.08 mm, Number of poles: 5,
GTIN (EAN)	4032248694075	90°, PUSH IN with actuator, Clamping range, max. : 3.31 mm², Box
Qty.	48 ST	
Type	BLF 5.08HC/06/90F SN BK...	Version
Order No.	1000260001	PCB plug-in connector, female plug, 5.08 mm, Number of poles: 6,
GTIN (EAN)	4032248690220	90°, PUSH IN with actuator, Clamping range, max. : 3.31 mm², Box
Qty.	42 ST	
Type	BLF 5.08HC/06/90F SN OR...	Version
Order No.	1002130000	PCB plug-in connector, female plug, 5.08 mm, Number of poles: 6,
GTIN (EAN)	4032248694082	90°, PUSH IN with actuator, Clamping range, max. : 3.31 mm², Box
Qty.	42 ST	
Type	BLF 5.08HC/07/90F SN OR...	Version
Order No.	1002140000	PCB plug-in connector, female plug, 5.08 mm, Number of poles: 7,
GTIN (EAN)	4032248694099	90°, PUSH IN with actuator, Clamping range, max. : 3.31 mm², Box
Qty.	36 ST	
Type	BLF 5.08HC/08/90F SN BK...	Version
Order No.	1000280001	PCB plug-in connector, female plug, 5.08 mm, Number of poles: 8,
GTIN (EAN)	4032248690244	90°, PUSH IN with actuator, Clamping range, max. : 3.31 mm², Box
Qty.	36 ST	
Type	BLF 5.08HC/08/90F SN OR...	Version
Order No.	1002150000	PCB plug-in connector, female plug, 5.08 mm, Number of poles: 8,
GTIN (EAN)	4032248694105	90°, PUSH IN with actuator, Clamping range, max. : 3.31 mm², Box
Qty.	36 ST	
Type	BLF 5.08HC/09/90F SN OR...	Version
Order No.	1002160000	PCB plug-in connector, female plug, 5.08 mm, Number of poles: 9,
GTIN (EAN)	4032248694310	90°, PUSH IN with actuator, Clamping range, max. : 3.31 mm², Box
Qty.	30 ST	
Type	BLF 5.08HC/10/90F SN BK...	Version
Order No.	1000300001	PCB plug-in connector, female plug, 5.08 mm, Number of poles: 10,
GTIN (EAN)	4032248690268	90°, PUSH IN with actuator, Clamping range, max. : 3.31 mm², Box
Qty.	30 ST	
Type	BLF 5.08HC/10/90F SN OR...	Version
Order No.	1002170000	PCB plug-in connector, female plug, 5.08 mm, Number of poles: 10,
GTIN (EAN)	4032248694327	90°, PUSH IN with actuator, Clamping range, max. : 3.31 mm², Box
Qty.	30 ST	
Type	BLF 5.08HC/11/90F SN OR...	Version
Order No.	1002180000	PCB plug-in connector, female plug, 5.08 mm, Number of poles: 11,
GTIN (EAN)	4032248694334	90°, PUSH IN with actuator, Clamping range, max. : 3.31 mm², Box
Qty.	24 ST	
Type	BLF 5.08HC/12/90F SN BK...	Version
Order No.	1000320001	PCB plug-in connector, female plug, 5.08 mm, Number of poles: 12,
GTIN (EAN)	4032248690282	90°, PUSH IN with actuator, Clamping range, max. : 3.31 mm², Box
Qty.	24 ST	

WDU 1.5/BLZ 5.08

Weidmüller Interface GmbH & Co. KG
 Klingenbergstraße 26
 D-32758 Detmold
 Germany

www.weidmueller.com

Accessories

Type	BLF 5.08HC/12/90F SN OR...	Version
Order No.	1002190000	PCB plug-in connector, female plug, 5.08 mm, Number of poles: 12,
GTIN (EAN)	4032248694341	90°, PUSH IN with actuator, Clamping range, max. : 3.31 mm², Box
Qty.	24 ST	
Type	BLF 5.08HC/13/90F SN OR...	Version
Order No.	1002200000	PCB plug-in connector, female plug, 5.08 mm, Number of poles: 13,
GTIN (EAN)	4032248694358	90°, PUSH IN with actuator, Clamping range, max. : 3.31 mm², Box
Qty.	24 ST	
Type	BLF 5.08HC/14/90F SN OR...	Version
Order No.	1002210000	PCB plug-in connector, female plug, 5.08 mm, Number of poles: 14,
GTIN (EAN)	4032248694365	90°, PUSH IN with actuator, Clamping range, max. : 3.31 mm², Box
Qty.	18 ST	
Type	BLF 5.08HC/15/90F SN OR...	Version
Order No.	1002220000	PCB plug-in connector, female plug, 5.08 mm, Number of poles: 15,
GTIN (EAN)	4032248694372	90°, PUSH IN with actuator, Clamping range, max. : 3.31 mm², Box
Qty.	18 ST	
Type	BLF 5.08HC/16/90F SN BK...	Version
Order No.	1000360001	PCB plug-in connector, female plug, 5.08 mm, Number of poles: 16,
GTIN (EAN)	4032248690329	90°, PUSH IN with actuator, Clamping range, max. : 3.31 mm², Box
Qty.	18 ST	
Type	BLF 5.08HC/16/90F SN OR...	Version
Order No.	1002230000	PCB plug-in connector, female plug, 5.08 mm, Number of poles: 16,
GTIN (EAN)	4032248694389	90°, PUSH IN with actuator, Clamping range, max. : 3.31 mm², Box
Qty.	18 ST	
Type	BLF 5.08HC/17/90F SN OR...	Version
Order No.	1002240000	PCB plug-in connector, female plug, 5.08 mm, Number of poles: 17,
GTIN (EAN)	4032248694396	90°, PUSH IN with actuator, Clamping range, max. : 3.31 mm², Box
Qty.	18 ST	
Type	BLF 5.08HC/18/90F SN OR...	Version
Order No.	1002250000	PCB plug-in connector, female plug, 5.08 mm, Number of poles: 18,
GTIN (EAN)	4032248694402	90°, PUSH IN with actuator, Clamping range, max. : 3.31 mm², Box
Qty.	18 ST	
Type	BLF 5.08HC/19/90F SN OR...	Version
Order No.	1002260000	PCB plug-in connector, female plug, 5.08 mm, Number of poles: 19,
GTIN (EAN)	4032248694419	90°, PUSH IN with actuator, Clamping range, max. : 3.31 mm², Box
Qty.	12 ST	
Type	BLF 5.08HC/20/90F SN OR...	Version
Order No.	1002270000	PCB plug-in connector, female plug, 5.08 mm, Number of poles: 20,
GTIN (EAN)	4032248694433	90°, PUSH IN with actuator, Clamping range, max. : 3.31 mm², Box
Qty.	12 ST	
Type	BLF 5.08HC/21/90F SN OR...	Version
Order No.	1477230000	PCB plug-in connector, female plug, 5.08 mm, Number of poles: 21,
GTIN (EAN)	4050118284546	90°, PUSH IN with actuator, Clamping range, max. : 3.31 mm², Box
Qty.	12 ST	