

## CLI C 1-3 BL/WS N CD

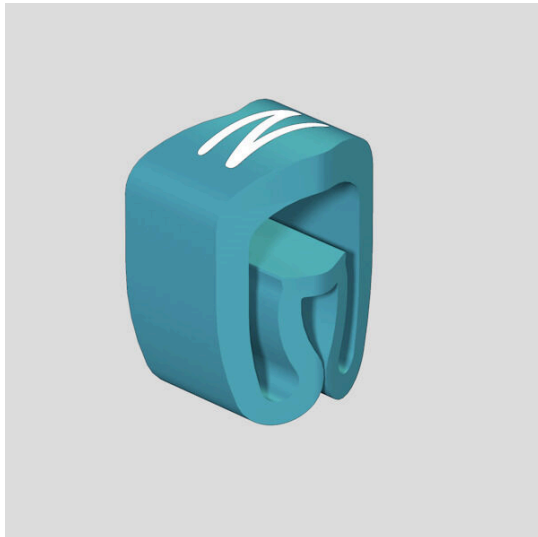
**Weidmüller Interface GmbH & Co. KG**

Klingenbergstraße 26

D-32758 Detmold

Germany

[www.weidmueller.com](http://www.weidmueller.com)



CLI C conductor markers are mounted on unconnected conductors. Four different sizes are available for labelling conductor cross-sections from 0.5 mm<sup>2</sup> to max. 70 mm<sup>2</sup>. The markers are already printed and ready for use. Individual labelling is possible by combining the individual markers.

- Closed markers, reliable and for mounting on unconnected cables
- A special flexible bellow profile ensures a wide application range
- Fast and easy to fit – with minimal effort
- Corresponding accessories make labelling easy
- Permanent, high-quality labelling
- High contrast for optimum legibility

### General ordering data

Version	CableLine, Conductor and cable markers, 2.5 - 5 mm, 3 x 4.2 mm, blue
Order No.	<a href="#">1568251664</a>
Type	CLI C 1-3 BL/WS N CD
GTIN (EAN)	4008190991692
Qty.	500 items

## CLI C 1-3 BL/WS N CD

Weidmüller Interface GmbH & Co. KG  
Klingenbergstraße 26  
D-32758 Detmold  
Germany

www.weidmueller.com

## Technical data

## Approvals

ROHS	Conform
------	---------

## Dimensions and weights

Depth	5 mm	Depth (inches)	0.1968 inch
Height	3 mm	Height (inches)	0.1181 inch
Width	4.2 mm	Width (inches)	0.1654 inch
Net weight	0.08 g		

## Temperatures

Operating temperature range	-30...80 °C
-----------------------------	-------------

## Environmental Product Compliance

RoHS Compliance Status	Compliant without exemption
REACH SVHC	No SVHC above 0.1 wt%

## General data

Material colour according to resistance code	6	
Orientation of print	horizontal	
Type of printing	Standard	
Printing method	hot-embossing	
Version	CD	
Width	4.2 mm	
UL 94 flammability rating	V-0	
Operating temperature range, max.	80 °C	
Operating temperature range, min.	-30 °C	
Colour	blue	
Halogen	Yes	
Basic material	PVC, soft, without Cadmium	
Colour of printing	white	
Printed characters	Symbols	
Number of markers per packaging unit	Form of supply	Reel
Recommended industries	Process, Machinery	
Number of markers per combination	1 Reel = Conductor and cable markers	
Operating temperature range	-30...80 °C	
Imprint	N	

## Conductor and cable markers

Halogen	Yes	Conductor cross-section, max.	4 mm <sup>2</sup>
Conductor cross-section, min.	1.5 mm <sup>2</sup>	Conductor O.D., max.	5 mm
Conductor O.D., min.	2.5 mm	Conductor O.D.	2.5 - 5 mm
Cross-section for connected wire	1.5 - 4 mm <sup>2</sup>		

## Classifications

ETIM 8.0	EC001530	ETIM 9.0	EC001530
ETIM 10.0	EC001530	ECLASS 14.0	27-28-11-02
ECLASS 15.0	27-28-11-02		