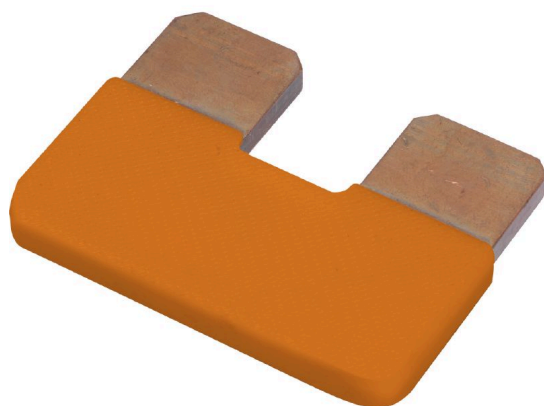


WQB WPD X06/2**Weidmüller Interface GmbH & Co. KG**

Klingenbergstraße 26

D-32758 Detmold

Germany

www.weidmueller.com

The distribution or multiplication of a potential to adjoining terminal blocks is realized via a cross-connection. Additional wiring effort can be easily avoided. Even if the poles are broken out, contact reliability in the terminal blocks is still ensured. Our portfolio offers pluggable and screwable cross-connection systems for modular terminal blocks.

General ordering data

Version	Cross-connector (terminal), Plugged, grey, 215 A, Number of poles: 2, Pitch in mm (P): 39.50, Insulated: Yes, Width: 7 mm
Order No.	1561940000
Type	WQB WPD X06/2
GTIN (EAN)	4050118367126
Qty.	3 items

WQB WPD X06/2

Weidmüller Interface GmbH & Co. KG
 Klingenbergstraße 26
 D-32758 Detmold
 Germany

www.weidmueller.com

Technical data

Approvals

ROHS	Conform
------	---------

Dimensions and weights

Width	7 mm	Width (inches)	0.2756 inch
Net weight	5.5 g		

Temperatures

Storage temperature	-25 °C...55 °C	Ambient temperature	-5 °C...40 °C
---------------------	----------------	---------------------	---------------

Environmental Product Compliance

RoHS Compliance Status	Compliant without exemption
REACH SVHC	No SVHC above 0.1 wt%

Material data

Colour	grey
--------	------

System specifications

Version	Cross-connector
---------	-----------------

Additional technical data

Type of fixing	Plugged	Explosion-tested version	No
----------------	---------	--------------------------	----

Dimensions

Pitch in mm (P)	39.50 mm
-----------------	----------

General

Number of poles	2
-----------------	---

Rating data

Rated voltage	400 V	Nominal current	215 A
---------------	-------	-----------------	-------

Classifications

ETIM 8.0	EC000489	ETIM 9.0	EC000489
ETIM 10.0	EC000489	ECLASS 14.0	27-25-03-03
ECLASS 15.0	27-25-03-03		