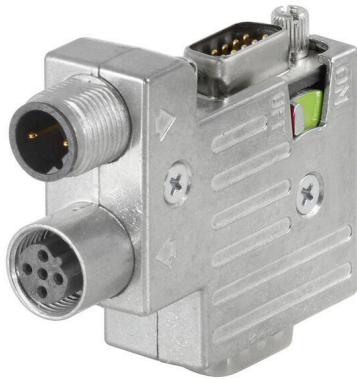


## CAN SUB-D SK35 TERM PS

**Weidmüller Interface GmbH & Co. KG**  
Klingenbergstraße 26  
D-32758 Detmold  
Germany

[www.weidmueller.com](http://www.weidmueller.com)



Individual cable lengths are often required nowadays. In order to meet these demands, Weidmüller offers a wide range of plug-in connectors for custom assembly.

### General ordering data

Version	SUB-D
Order No.	<a href="#">1550610000</a>
Type	CAN SUB-D SK35 TERM PS
GTIN (EAN)	4050118357066
Qty.	1 items

**CAN SUB-D SK35 TERM PS**

**Weidmüller Interface GmbH & Co. KG**  
 Klingenbergstraße 26  
 D-32758 Detmold  
 Germany

www.weidmueller.com

**Technical data**

**Approvals**

ROHS Conform

**Dimensions and weights**

Depth	16.8 mm	Depth (inches)	0.6614 inch
Height	68.8 mm	Height (inches)	2.7087 inch
Width	46 mm	Width (inches)	1.811 inch
Net weight	100 g		

**Temperatures**

Humidity Max. 75% at +25°C, non-condensing

**Environmental Product Compliance**

RoHS Compliance Status	Compliant with exemption
RoHS Exemption (if applicable/known)	6a1
REACH SVHC	Lead 7439-92-1
SCIP	3cc1d9b1-0f2a-47ed-a501-ddcfcfaaf625

**Technical specifications for sub-D connector**

Tightening torque	0.3 Nm	Housing main material	ZnAl
Humidity	Max. 75% at +25°C, non-condensing	Protection degree	IP30
Plugging cycles	≥ 200	Data rate	1 Mbps
Outgoing elbow	35°	Terminating resistor available	Yes
BUS interface	D-Sub 9-pole, Socket	Interlock	UNC4-40
Temperature range of housing	-20...+70 ° C	BUS PG interface	D-Sub 9-pole, Pin
BUS, cable interface	Screw connection	Programming interface	Yes

**Classifications**

ETIM 8.0	EC001132	ETIM 9.0	EC001132
ETIM 10.0	EC001132	ECLASS 14.0	27-44-03-02
ECLASS 15.0	27-44-03-22		