

## DRMKIT 24VAC 4CO LD/PB

**Weidmüller Interface GmbH & Co. KG**  
 Klingenbergstraße 26  
 D-32758 Detmold  
 Germany

www.weidmueller.com

### Product image



Similar to illustration

- Mounted kit consisting relay, socket and retaining clip
- 100 % function tested
- 100 % check of the dielectric strenght between input - output
- 4 CO contacts
- With mechanical status indicator
- Optional Test button with coloured identification of coils (AC red / DC blue)
- Bright status LED (AC coil: red / DC coil: green)

### General ordering data

|            |   |
|------------|---|
| Version    | D-SERIES DRM, Relay module, Number of contacts: 4, CO contact AgNi flash gold-plated, Rated control voltage: 24 V AC, Continuous current: 5 A, Screw connection, Test button available: Yes |
| Order No.  | <a href="#">1542530000</a>  |
| Type       | DRMKIT 24VAC 4CO LD/PB  |
| GTIN (EAN) | 4050118347265   |
| Qty.       | 10 items  |

**DRMKIT 24VAC 4CO LD/PB**

**Weidmüller Interface GmbH & Co. KG**  
 Klingenbergstraße 26  
 D-32758 Detmold  
 Germany

www.weidmueller.com

**Technical data**

**Approvals**

Approvals



ROHS Conform

**Dimensions and weights**

|            |         |                 |             |
|------------|---------|-----------------|-------------|
| Depth      | 66.8 mm | Depth (inches)  | 2.6299 inch |
| Height     | 79.9 mm | Height (inches) | 3.1457 inch |
| Width      | 27.2 mm | Width (inches)  | 1.0709 inch |
| Net weight | 93.35 g |                 |             |

**Temperatures**

|                       |                |                     |                |
|-----------------------|----------------|---------------------|----------------|
| Storage temperature   | -40 °C...70 °C | Ambient temperature | -40 °C...55 °C |
| Operating temperature |                |                     |                |

**Environmental Product Compliance**

|                        |                             |
|------------------------|-----------------------------|
| RoHS Compliance Status | Compliant without exemption |
| REACH SVHC             | No SVHC above 0.1 wt%       |

**Control side**

|                       |                    |                  |                                  |
|-----------------------|--------------------|------------------|----------------------------------|
| Rated control voltage | 24 V AC            | Rated current AC | 62.4 mA (50 Hz), 52.2 mA (60 Hz) |
| Power rating          | 1.0...1.2VA (60HZ) | Coil resistance  | 160 Ω ± 10 %                     |
| Status indicator      | red LED            |                  |                                  |

**Load side**

|   |                           |   |                                       |
|---|---------------------------|---|---------------------------------------|
| Rated switching voltage                 | 250 V AC                  | Continuous current                      | 5 A                                   |
| Max. switching frequency at rated load  | 0.1 Hz                    | Max. switching voltage, AC              | 250 V                                 |
| Inrush current                          | 10 A / 50 ms              | AC switching capacity (resistive), max. | 1250 VA                               |
| DC switching capacity (resistive), max. | 120 W @ 24 V              | Switch-on delay                         | <20 ms                                |
| Switch-off delay                        | <20 ms                    | Contact type                            | 4 CO contact (AgNi flash gold-plated) |
| Mechanical service life                 | 20 x 106 switching cycles | Min. switching power                    | 10 mA @ 12 V, 100 mA @ 5 V            |

**General data**

|                                      |   |                |
|--------------------------------------|---|----------------|
| Mounting rail                        | TS 35                                       |                |
| Test button available                | Yes   |                |
| Version of test button               | Lockable test button, Momentary test button |                |
| Mechanical switch position indicator | Yes   |                |
| Colour                               | black                                       |                |
| UL94 flammability rating component   | Component                                   | Housing        |
|                                      | UL94 flammability rating                    | V-2            |
|                                      | Component                                   | Mounting foot  |
|                                      | UL94 flammability rating                    | HB             |
|                                      | Component                                   | Retaining clip |
|                                      | UL94 flammability rating                    | HB             |
| Component                            | Relay cover                                 |                |

**DRMKIT 24VAC 4CO LD/PB**
**Weidmüller Interface GmbH & Co. KG**

 Klingenbergstraße 26  
 D-32758 Detmold  
 Germany

[www.weidmueller.com](http://www.weidmueller.com)
**Technical data**

|                          |                        |
|--------------------------|------------------------|
| UL94 flammability rating | V-2                    |
| Component                | Relay baseplate        |
| UL94 flammability rating | V-0                    |
| Component                | Relay status indicator |
| UL94 flammability rating | HB                     |
| Component                | Relay test button      |
| UL94 flammability rating | HB                     |

**Insulation coordination**

|   |                    |  |                    |
|---|--------------------|--|--------------------|
| Rated voltage   | 250 V              | Pollution severity                               | 2                  |
| Surge voltage category  | III                | Insulating material group                        | C                  |
| Clearance and creepage distances for control side - load side | ≥ 5.5 mm           | Dielectric strength for control side - load side | 1.8 kVeff / 1 min. |
| Dielectric strength of neighbouring contacts                  | 1 kVeff / 1 min    | Dielectric strength of open contact              | 1 kVeff / 1 min    |
| Impulse withstand voltage                                     | 4.8 kV (1.2/50 µs) | Protection degree                                | IP20               |

**Further details of approvals / standards**

|                               |                             |                              |                             |
|-------------------------------|-----------------------------|------------------------------|-----------------------------|
| Relevant relay                | <a href="#">DRM570524LT</a> | Relevant base                | <a href="#">SCM 4CO ECO</a> |
| Certificate no. (cURus) relay | E312083                     | Certificate no. (cURus) base | E312083                     |

**Connection data**

|   |                     |   |                     |
|---|---------------------|---|---------------------|
| Wire connection method  | Screw connection    | Stripping length, rated connection  | 7 mm                |
| Tightening torque, min.   | 0.5 Nm              | Tightening torque, max.   | 0.7 Nm              |
| Clamping range, min.  | 0.5 mm <sup>2</sup> | Clamping range, max.  | 2.5 mm <sup>2</sup> |
| Wire cross-section, solid, min.   | 0.5 mm <sup>2</sup> | Wire cross-section, solid, max.   | 2.5 mm <sup>2</sup> |
| Wire connection cross section, finely stranded, min.                                    | 0.5 mm <sup>2</sup> | Wire connection cross section, finely stranded, max.                                    | 2.5 mm <sup>2</sup> |
| Wire connection cross-section, finely stranded with wire-end ferrules DIN 46228/4, min. | 0.5 mm <sup>2</sup> | Wire connection cross-section, finely stranded with wire-end ferrules DIN 46228/4, max. | 2.5 mm <sup>2</sup> |
| Conductor cross-section, flexible, AEH (DIN 46228-1), min.                              | 0.5 mm <sup>2</sup> | Conductor cross-section, flexible, AEH (DIN 46228-1), max.                              | 2.5 mm <sup>2</sup> |
| Wire connection cross section, finely stranded, two clampable wires, min.               | 0.5 mm <sup>2</sup> | Wire cross-section, finely stranded, two clampable wires, max.                          | 1 mm <sup>2</sup>   |
| Blade size  | size PH1            |   |                     |

**Classifications**

|             |             |             |             |
|-------------|-------------|-------------|-------------|
| ETIM 8.0    | EC001437    | ETIM 9.0    | EC001437    |
| ETIM 10.0   | EC001437    | ECLASS 14.0 | 27-37-16-01 |
| ECLASS 15.0 | 27-37-16-01 |             |             |

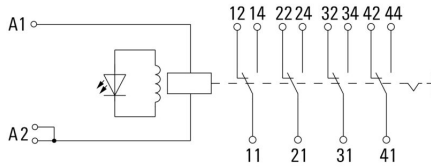
DRMKIT 24VAC 4CO LD/PB

Weidmüller Interface GmbH & Co. KG  
 Klingenbergstraße 26  
 D-32758 Detmold  
 Germany

www.weidmueller.com

Drawings

Wiring diagram



Graph



DC load limit curve Resistive load

Graph



Electrical service life

Graph



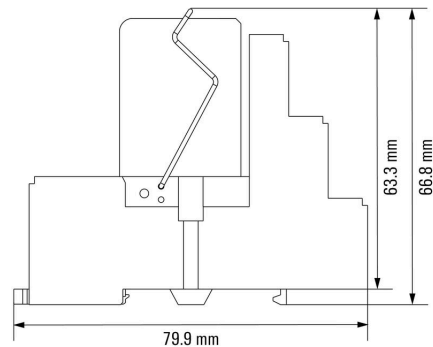
Derating curve

Graph



AC operational voltage range

Dimensional drawing



**DRMKIT 24VAC 4CO LD/PB**

**Weidmüller Interface GmbH & Co. KG**  
 Klingenbergstraße 26  
 D-32758 Detmold  
 Germany

**Drawings**

www.weidmueller.com

**Miscellaneous**



Type codes

## DRMKIT 24VAC 4CO LD/PB

**Weidmüller Interface GmbH & Co. KG**  
 Klingenbergstraße 26  
 D-32758 Detmold  
 Germany

www.weidmueller.com

## Accessories

### LED



Pluggable protective modules for the D-SERIES relay sockets, with optional protective functions.

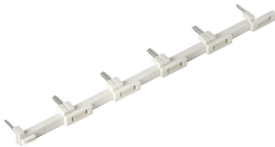
- With green LED

### General ordering data

|            |                            |   |  |
|------------|----------------------------|---|--|
| Type       | RIM 3 6/24VUC              | Version   |  |
| Order No.  | <a href="#">7940018457</a> | D-SERIES, LED module, Rated control voltage: 6...24 V UC, Plug-in connection  |  |
| GTIN (EAN) | 4032248878192              |   |  |
| Qty.       | 10 ST                      |   |  |
| Type       | RIM 3 24/60VUC             | Version   |  |
| Order No.  | <a href="#">7760056018</a> | D-SERIES, LED module, Rated control voltage: 24...60 V UC, Plug-in connection |  |
| GTIN (EAN) | 4032248878130              |   |  |
| Qty.       | 10 ST                      |   |  |

### Cross-connection for socket with screw connection

Cross-connection for the sockets in the D-SERIES DRM.



### General ordering data

|            |                            |                                  |  |
|------------|----------------------------|----------------------------------|--|
| Type       | SCMH QV S                  | Version                          |  |
| Order No.  | <a href="#">1132080000</a> | RIDERSERIES RCM, Cross-connector |  |
| GTIN (EAN) | 4032248912193              |                                  |  |
| Qty.       | 10 ST                      |                                  |  |

### Retaining clips



Retaining clip for D-SERIES DRM relays

- Metal and plastic retaining clip

## DRMKIT 24VAC 4CO LD/PB

**Weidmüller Interface GmbH & Co. KG**  
 Klingenbergstraße 26  
 D-32758 Detmold  
 Germany

[www.weidmueller.com](http://www.weidmueller.com)

## Accessories

### General ordering data

|            |                            |                              |
|------------|----------------------------|------------------------------|
| Type       | SCM CLIP P                 | Version                      |
| Order No.  | <a href="#">7760056367</a> | D-SERIES DRM, Retaining clip |
| GTIN (EAN) | 6944 169773334             |                              |
| Qty.       | 5 ST                       |                              |

### Blank



ESG is the tried-and-tested marker in MultiCard format for use on many well-known electrical devices. The result is high-quality device marking with a high-contrast appearance.

Various types are available for devices from manufacturers like Siemens, ABB, Beckhoff etc.

Advantages at a glance:

- Tags for universal usage, self-adhesive or clip-on tags, depending on type
- For aligned equipment, e.g. circuit breakers, we supply ESG markers for clipping onto tag rails
- Individual laser-quality printing according to specifications

For custom printing: Please send us a file of our labeling software M-Print PRO or M-Print PRO Online (without installation) for your labeling specifications.

### General ordering data

|            |                            |   |
|------------|----------------------------|---|
| Type       | ESG 9/26 SCM ECO MC NE ... | Version   |
| Order No.  | <a href="#">1520980000</a> | ESG, Device markers x 26 mm, PA 66, Colour: white, pluggable  |
| GTIN (EAN) | 4050118327939              |   |
| Qty.       | 80 ST                      |   |
| Type       | ESG 9/26 SCM ECO MC NE ... | Version   |
| Order No.  | <a href="#">1520990000</a> | ESG, Device markers x 26 mm, PA 66, Colour: yellow, pluggable |
| GTIN (EAN) | 4050118327861              |   |
| Qty.       | 80 ST                      |   |
| Type       | ESG 9/26 SCM ECO MC NE ... | Version   |
| Order No.  | <a href="#">1521000000</a> | ESG, Device markers x 26 mm, PA 66, Colour: grey, pluggable   |
| GTIN (EAN) | 4050118327878              |   |
| Qty.       | 80 ST                      |   |

## DRMKIT 24VAC 4CO LD/PB

**Weidmüller Interface GmbH & Co. KG**  
 Klingenbergstraße 26  
 D-32758 Detmold  
 Germany

www.weidmueller.com

## Accessories

### Custom printing



ESG is the tried-and-tested marker in MultiCard format for use on many well-known electrical devices. The result is high-quality device marking with a high-contrast appearance.

Various types are available for devices from manufacturers like Siemens, ABB, Beckhoff etc.

Advantages at a glance:

- Tags for universal usage, self-adhesive or clip-on tags, depending on type
- For aligned equipment, e.g. circuit breakers, we supply ESG markers for clipping onto tag rails
- Individual laser-quality printing according to specifications

For custom printing: Please send us a file of our labeling software M-Print PRO or M-Print PRO Online (without installation) for your labeling specifications.

### General ordering data

|            |                            |  |  |
|------------|----------------------------|--|--|
| Type       | ESG 9/26 SCM ECO MC SDR    | Version  |  |
| Order No.  | <a href="#">1525800000</a> | ESG, Device markers x 26 mm, PA 66, Colour: To customer specification, pluggable |  |
| GTIN (EAN) | 4050118331875              |  |  |
| Qty.       | 16 ST                      |  |  |

### Crosshead screwdriver, Phillips



VDE insulated screwdriver sets, for working on live parts up to 1000 V AC and 1500 V DC, DIN EN 60900, IEC 900. Each piece is "GS" safety tested. Blade made from fully hardened, high-alloy chromium-vanadium-molybdenum steel, gun-metal finish.

### General ordering data

|            |                            |   |  |
|------------|----------------------------|---|--|
| Type       | SDIK SLIM PH1 X 80         | Version   |  |
| Order No.  | <a href="#">2749650000</a> | Screwdriver, Blade width (B): 1 mm, 80 mm, Blade thickness (A): 1 |  |
| GTIN (EAN) | 4050118896398              |   |  |
| Qty.       | 1 ST                       |   |  |

### Crosshead screwdriver Phillips



VDE insulated crosshead screwdriver, for Phillips screws, SDIK PH DIN 7438, ISO 8764/2-PH, output to ISO 8764-PH, SoftFinish grip

**DRMKIT 24VAC 4CO LD/PB**

**Weidmüller Interface GmbH & Co. KG**  
 Klingenbergstraße 26  
 D-32758 Detmold  
 Germany

www.weidmueller.com

**Accessories**

**General ordering data**

|            |                            |   |  |
|------------|----------------------------|---|--|
| Type       | SDIK PH1 X 80              | Version   |  |
| Order No.  | <a href="#">2749890000</a> | Screwdriver, Blade width (B): 1 mm, 80 mm, Blade thickness (A): 1   |  |
| GTIN (EAN) | 4050118897098              |   |  |
| Qty.       | 1 ST                       |   |  |
| Type       | SDK PH1 X 80               | Version   |  |
| Order No.  | <a href="#">2749410000</a> | Screwdriver, Blade width (B): 4.5 mm, 80 mm, Blade thickness (A): 1 |  |
| GTIN (EAN) | 4050118895636              |   |  |
| Qty.       | 1 ST                       |   |  |

**ESG 6/15**



Guaranteed long service life: ESG

The multi-colour and multi-format labels have a strong adhesive layer to ensure the best possible adhesion to the underlying surface. Double laminated polyester makes the basic material very thin and yet extremely tear-resistant. Your benefits with MultiMark

- "Different materials for various requirements"
- Can be used with equipment from many manufacturers
- Device markers with a familiar design

**General ordering data**

|            |                            |                                       |  |
|------------|----------------------------|---------------------------------------|--|
| Type       | ESG 6/15 MM WS             | Version                               |  |
| Order No.  | <a href="#">2619940000</a> | ESG, Device markers, 6 x 15 mm, white |  |
| GTIN (EAN) | 4050118626148              |                                       |  |
| Qty.       | 3000 ST                    |                                       |  |

**ESG 6/17**



Guaranteed long service life: ESG

The multi-colour and multi-format labels have a strong adhesive layer to ensure the best possible adhesion to the underlying surface. Double laminated polyester makes the basic material very thin and yet extremely tear-resistant. Your benefits with MultiMark

- "Different materials for various requirements"
- Can be used with equipment from many manufacturers
- Device markers with a familiar design

**General ordering data**

|            |                            |                                       |  |
|------------|----------------------------|---------------------------------------|--|
| Type       | ESG 6/17 MM WS             | Version                               |  |
| Order No.  | <a href="#">2005100000</a> | ESG, Device markers, 6 x 17 mm, white |  |
| GTIN (EAN) | 4050118390728              |                                       |  |
| Qty.       | 3000 ST                    |                                       |  |